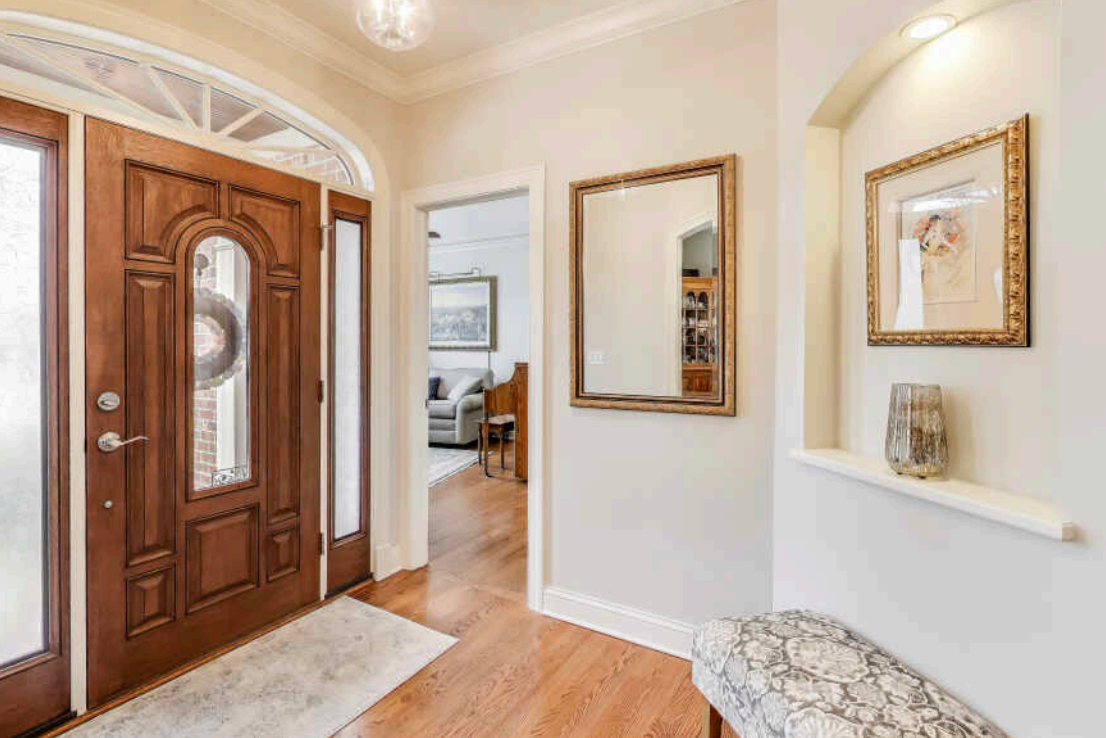


0N212 WOODLAND COURT  
WHEATON





## ROOM DIMENSIONS

FOYER : 8' × 6'

FAMILY ROOM : 27' × 22'

DINING ROOM : 15' × 11'

KITCHEN : 14' × 14'

BREAKFAST ROOM : 14' × 9'

SUN ROOM : 14' × 8'

PRIMARY BEDROOM : 17' × 16'

SECOND BEDROOM : 14' × 12'

THIRD BEDROOM : 14' × 10'

FOURTH BEDROOM : 14' × 11'

LAUNDRY/MUD ROOM : 9' × 8'

REC ROOM : 30' × 20'

FIFTH BEDROOM : 12' × 11'

OFFICE : 15' × 14'

## ADDITIONAL DETAILS

Tucked away on a quiet cul-de-sac in one of Wheaton's most desirable neighborhoods, this beautifully maintained and thoughtfully updated ranch offers 4+ bedrooms and 4.1 baths, including a spacious finished basement that adds exceptional flexibility.

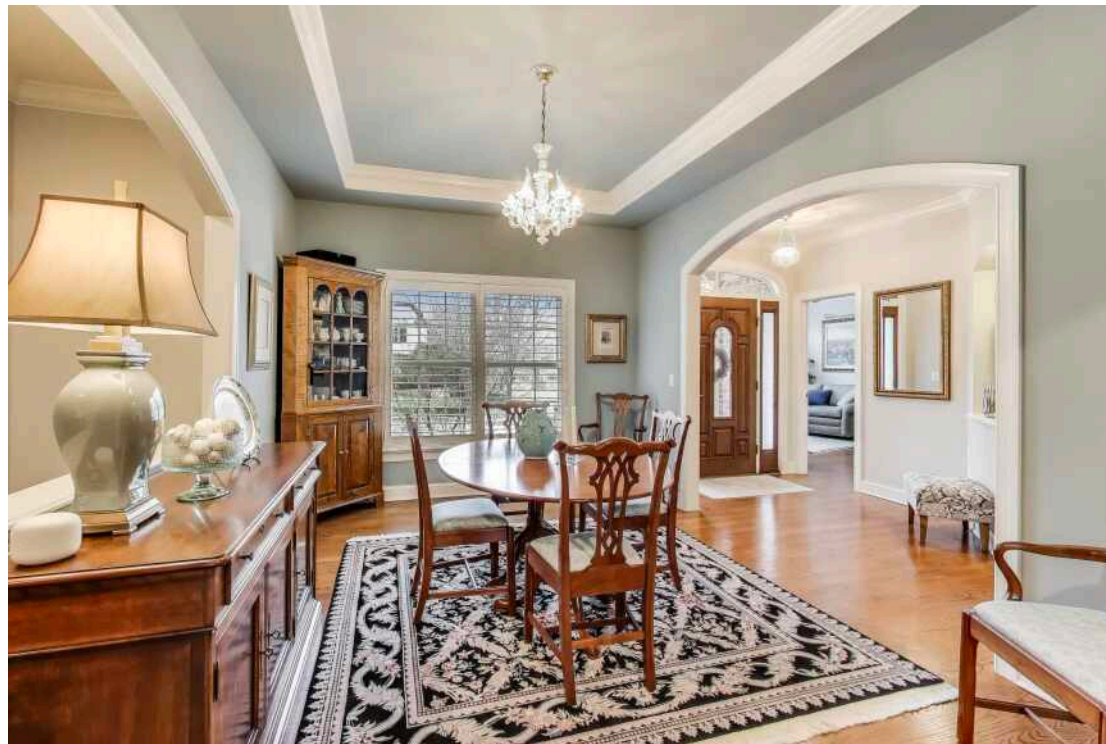
Step inside to discover vaulted ceilings, plantation shutters, and gleaming hardwood floors, all flowing through an open-concept layout ideal for both daily living and entertaining. The heart of the home is the gourmet, eat-in kitchen with modern Autumn Woods cabinetry, a large island, and updated with quartzite countertops and mostly newer stainless-steel appliances...perfect for any home cook or host. The expansive family/great room centers around a gas fireplace, ideal for movie night!

Enjoy the outdoors from your screened-in porch, offering views of the professionally landscaped backyard and new paver patio (2023). Zoned irrigation, landscape lighting, and gutter guards, installed in the last few years, create a low-maintenance and beautiful outdoor space for relaxing or entertaining.

The finished basement significantly extends the living area, featuring a large rec room, dedicated office, full bath, and private 5th bedroom...ideal for guests, a home gym, or multi-generational living.

Additional highlights include a 3-car attached garage, new roof (2019), and HVAC, hot water heater, and ejector pump...all replaced in 2021.

Conveniently located near top-rated schools, parks, and local amenities, this home offers comfort, space, and peace of mind in a highly sought-after Wheaton location. Experience the perfect blend of comfort, style, and location...schedule your private showing today and see all this stunning home has to offer.



5 BEDROOM

4.1 BATH

TAXES: \$15,712

ASSESSMENTS: \$200 / YEAR

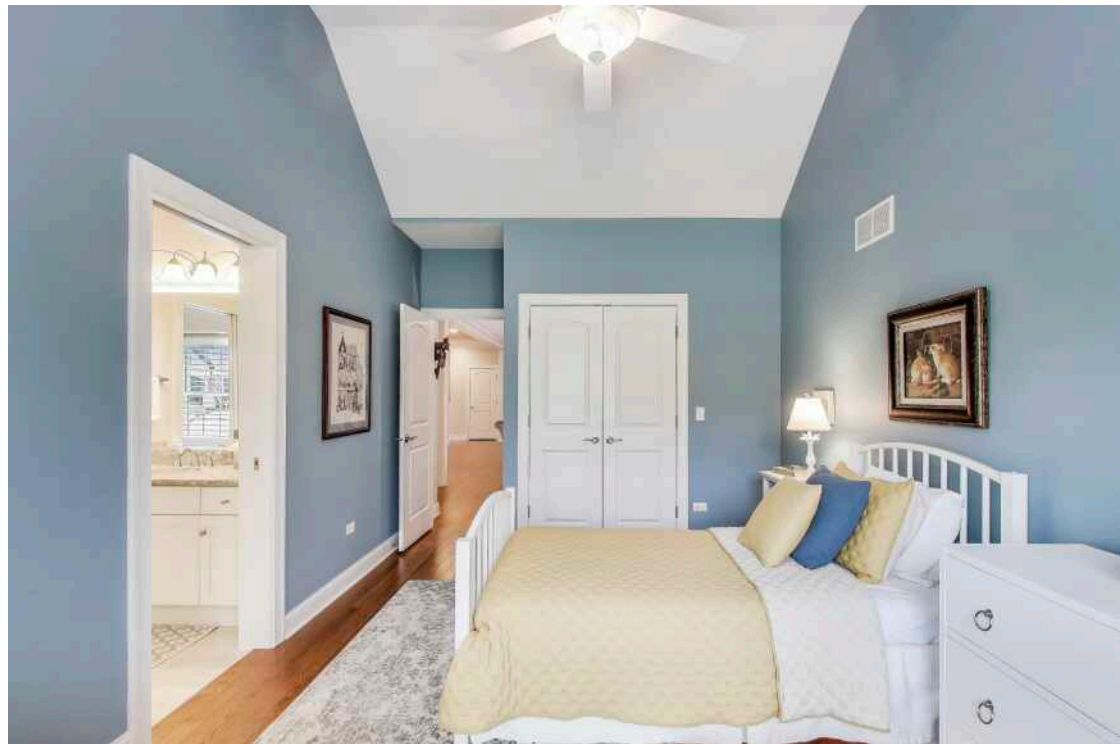




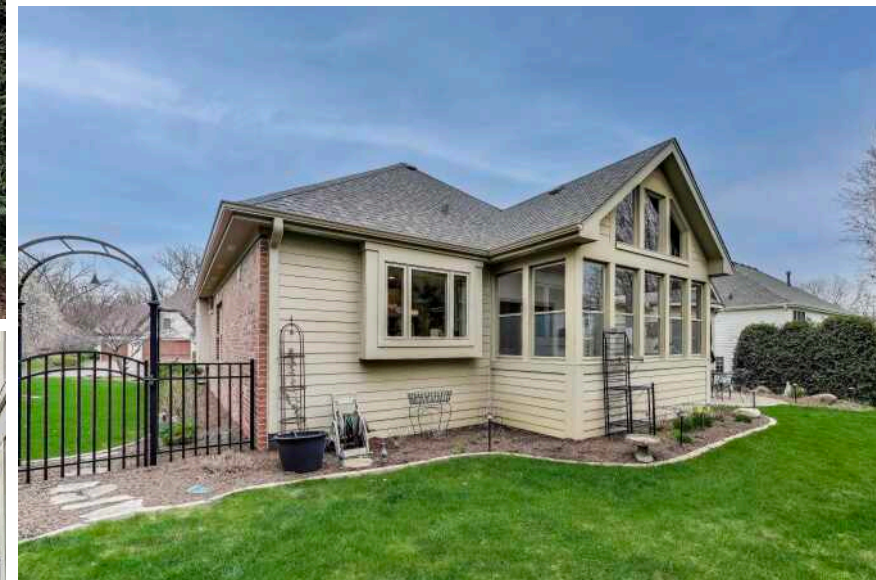




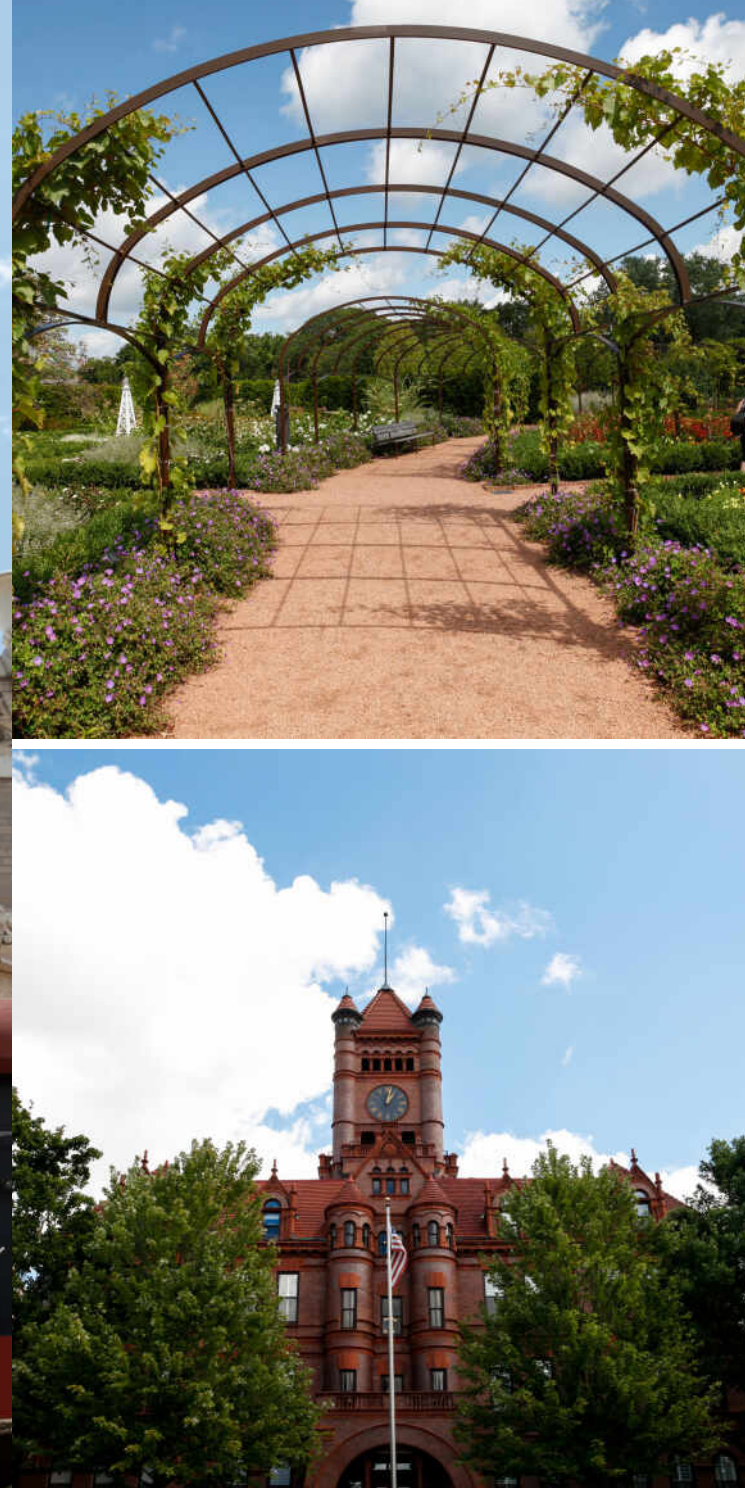












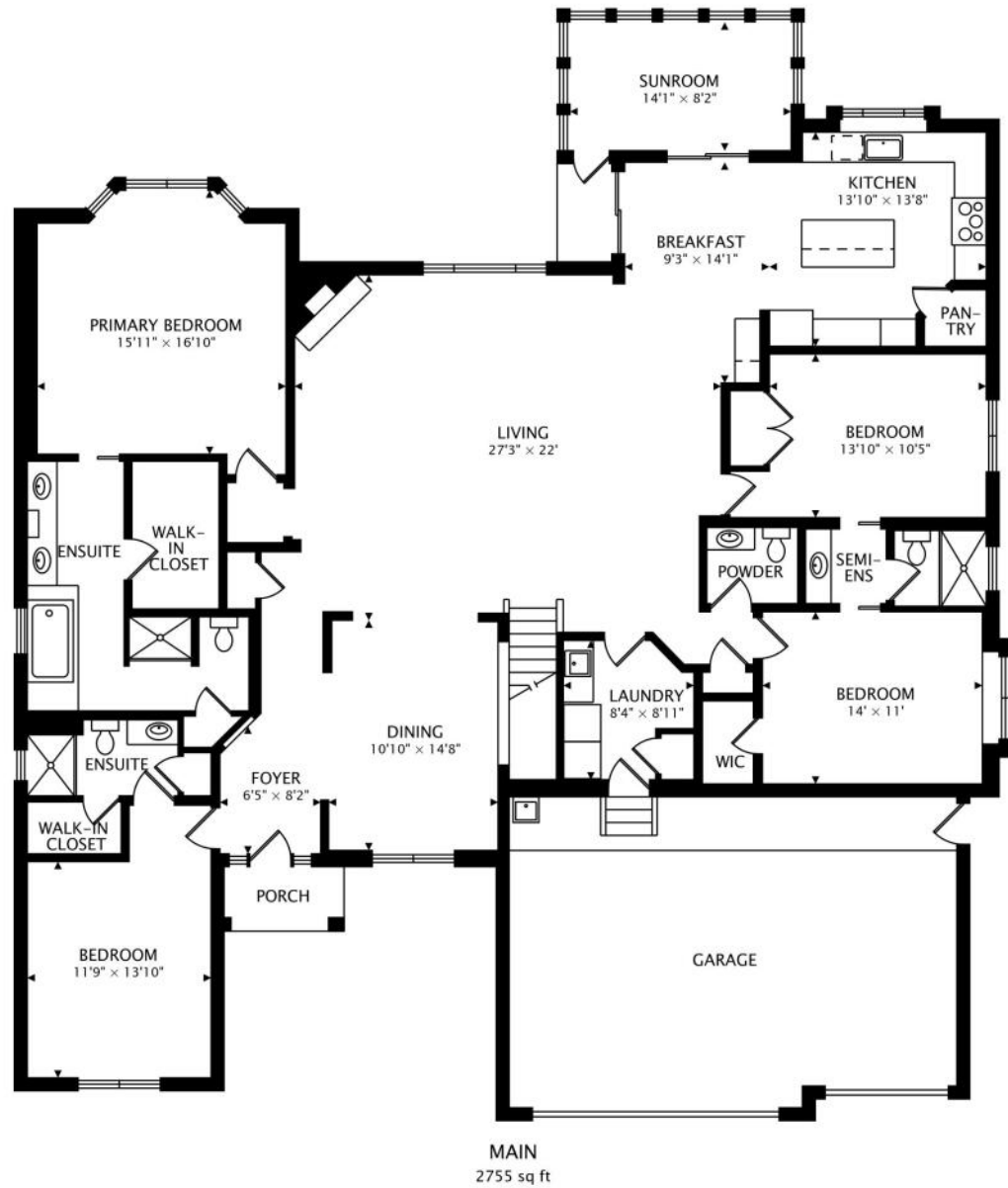
## WHEATON HAS RACKED UP MORE THAN ITS SHARE OF AWARDS.

The affluent community ranks among the “top 25 highest earning towns” and one of the best places to live by *Money* magazine.

The Wheaton Public Library is regularly ranked among the top in the nation. The Wheaton Park District, with 52 parks and more than 800 acres, has won several National Gold Medal Awards for Excellence from the National Recreation and Park Association. The park district includes the 135-acre Lincoln Marsh Natural Area with over 300 plant and animal species; the Cosley Zoo, which houses more than 200 animals; and the 27-hole Arrowhead Golf Club.

Wheaton is home to the prestigious Chicago Golf Club, the oldest 18-hole course in the country and host of numerous U.S. Open and U.S. Amateur Golf Championships, and the Cantigny Park and Golf Course, which includes a championship golf course and two museums. The county also owns the Danada Forest Preserve and Equestrian Center, once an estate and home to a Kentucky Derby winner.

The community has seen considerable residential and business development including its landmark, the Wheaton Center, a six-building apartment complex downtown that includes two 20-story high-rise buildings.







## YVONNE DESPINICH

BROKER | CRS

(630) 989-9500

YVONNED@ATPROPERTIES.COM



## ASHLEY MARKGRAF

BROKER

(630) 742.9245

ASHLEYM@ATPROPERTIES.COM



CHRISTIE'S  
INTERNATIONAL REAL ESTATE