

0N315 KING DRIVE
GENEVA





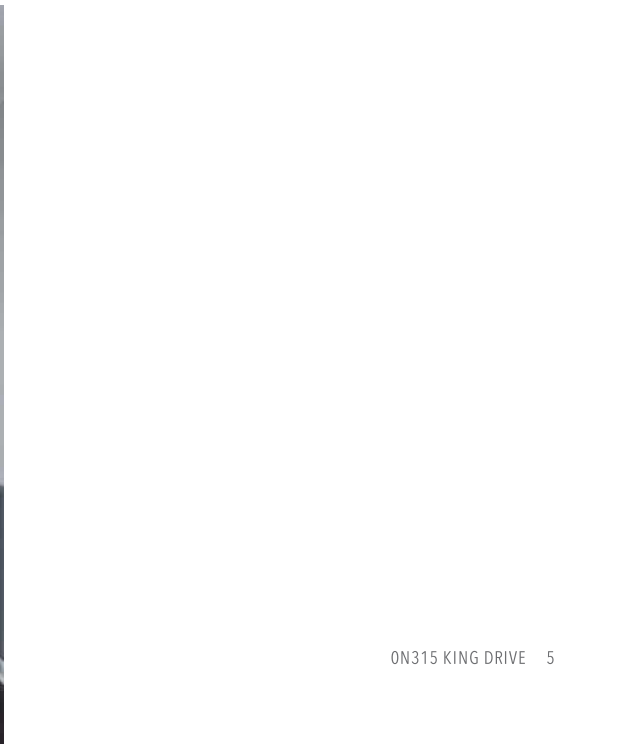
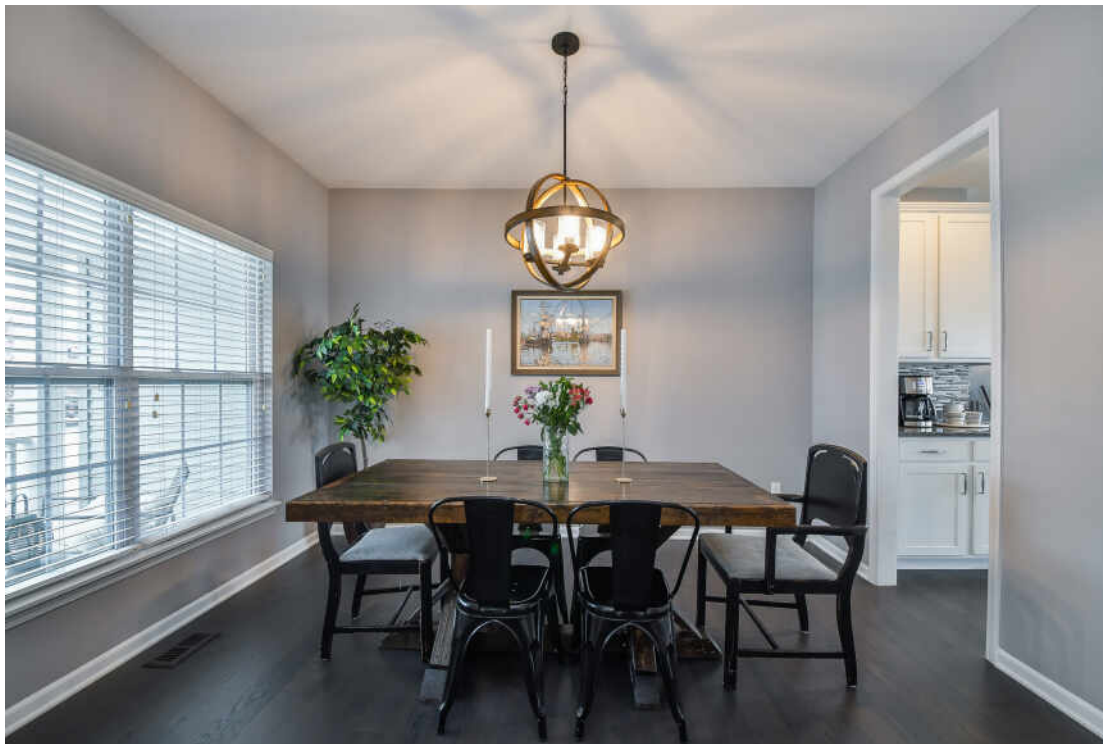
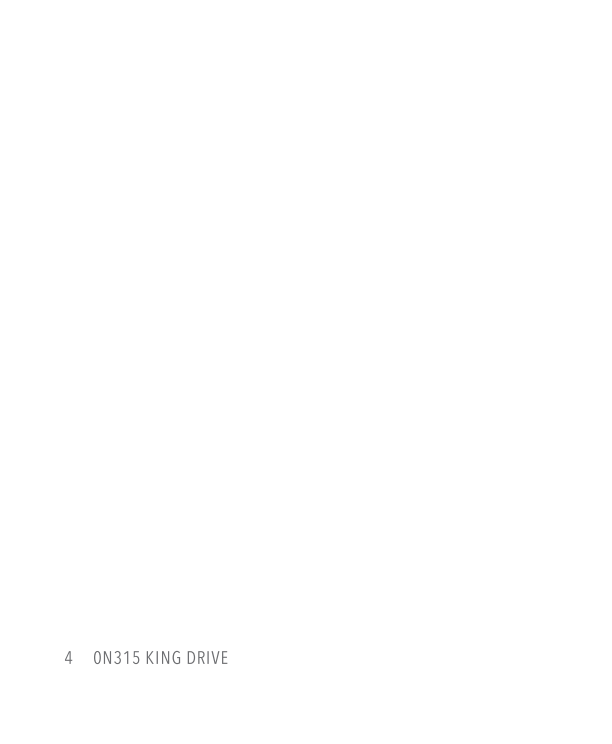
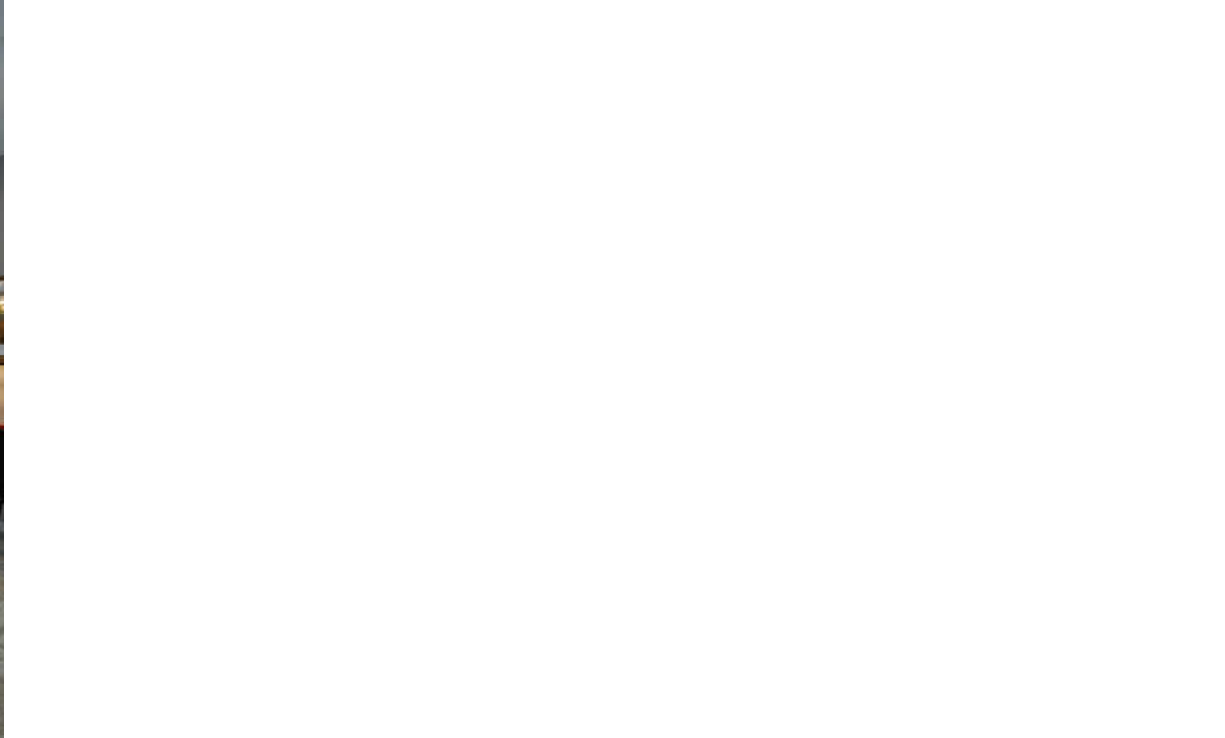
5 BEDROOM

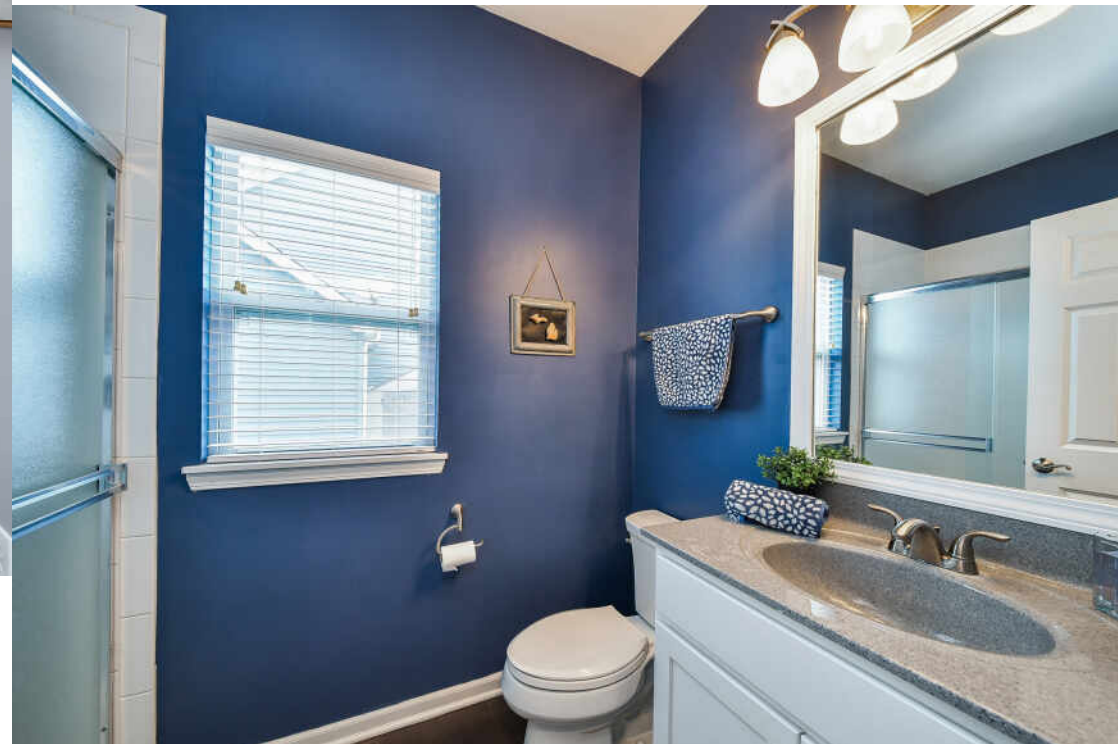
4 BATH

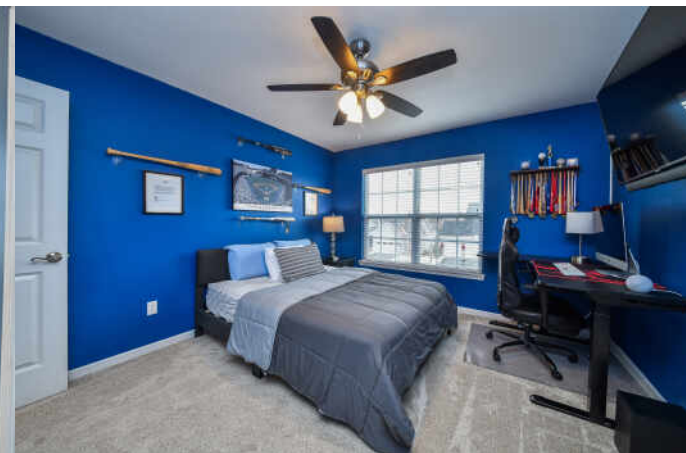
TAXES: 2025 | \$13779

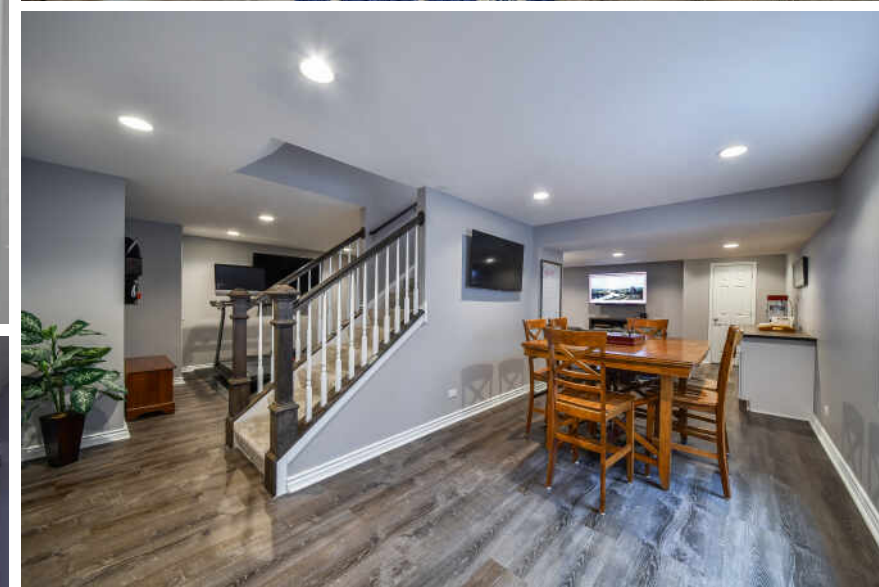
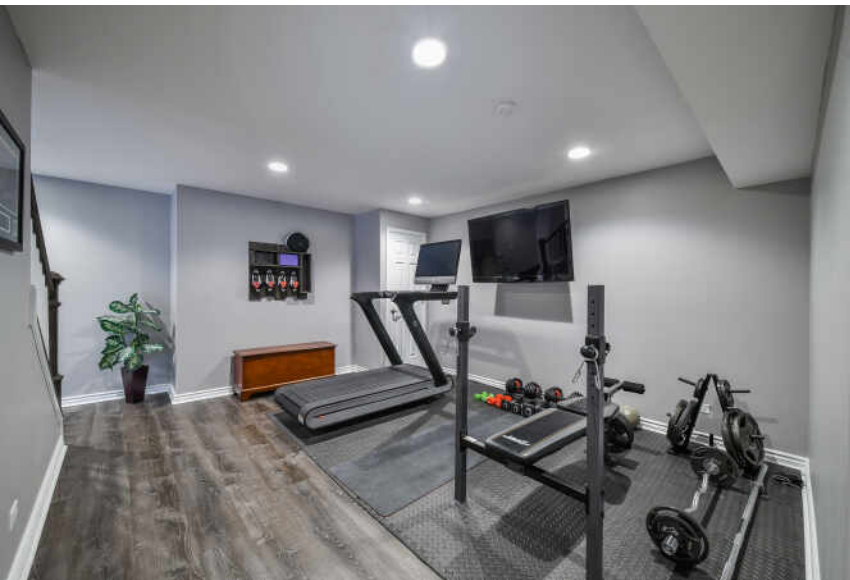
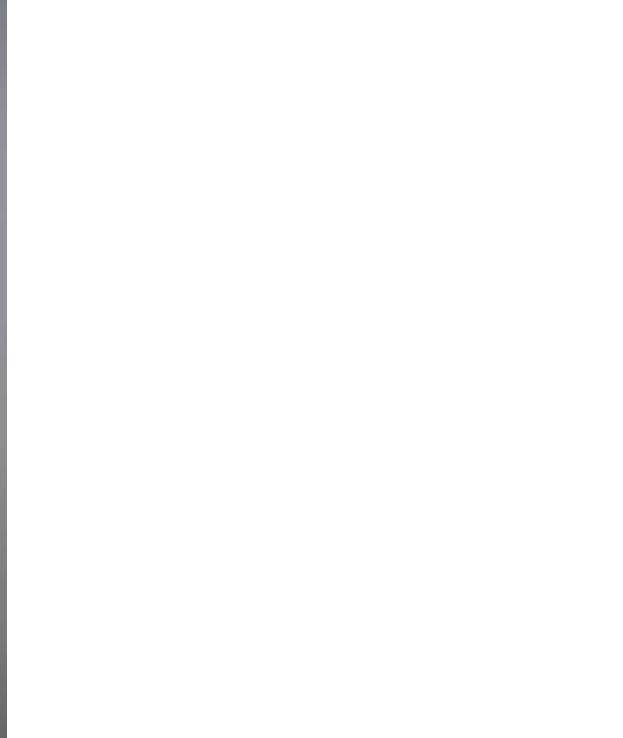
WELCOME HOME

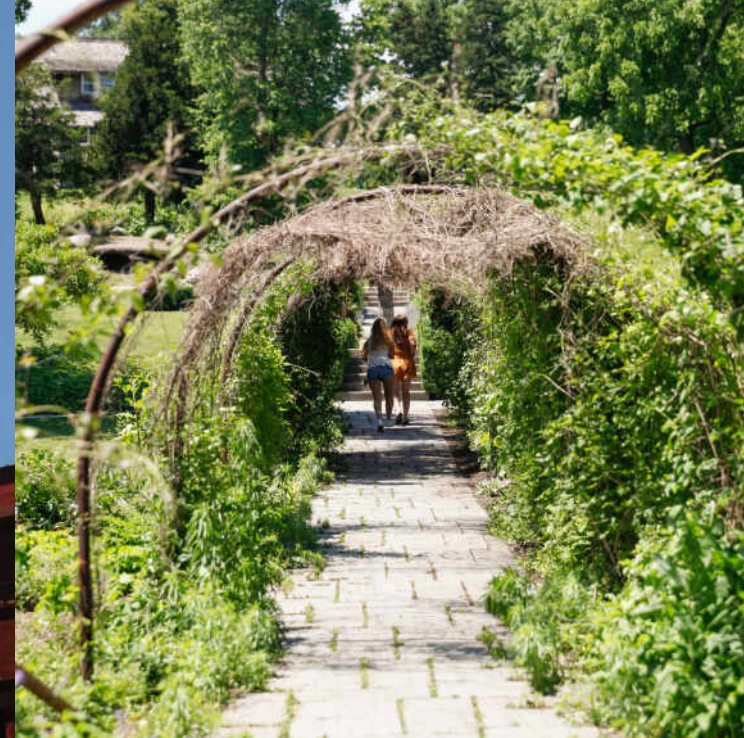
Positioned along a beautiful stretch of Mill Creek's Tanna Farms golf course, this thoughtfully designed home offers nearly 4,000 square feet of finished living space with a layout that balances openness, functionality, and everyday livability. Expansive windows across the back of the home bring in natural light and showcase views of the course, the fenced backyard, and spacious patio, creating a setting that feels open, inviting, and easy to enjoy year-round. The kitchen features lovely finishes and flows naturally into the family room, where a fireplace flanked by custom built-in shelving anchors the space, and maintains views of the backyard and beyond. A main floor bedroom located adjacent to a full bath offers excellent flexibility for overnight guests, extended family, or a private office space. Upstairs, the primary suite includes separate his-and-hers closets, a dedicated vanity area, and a spacious bathroom. The laundry room is conveniently located upstairs, and three additional bedrooms and a hall bath with a double sink vanity complete the second level. Need more space? The finished basement delivers with a gym area, rec space, family room/lounge area, full bath, and abundant storage. Out back, the spacious patio and hot tub create an ideal place to relax and take in the golf course views. And out front, the welcoming front porch adds another layer to the home's appeal, offering a comfortable place to unwind at the end of the day and enjoy the rhythm of life in this popular neighborhood. Mill Creek residents enjoy access to golf courses, parks, trails, a community pool (with optional membership), tennis courts, pickleball, and many other neighborhood amenities. This move-in ready home has so much to offer!











WITH ITS BEAUTIFUL SETTING, EXTENSIVE PARKS, AND HISTORIC WINDMILL STANDING NEARLY 70 FEET TALL, **GENEVA** IS A POPULAR DESTINATION FOR RESIDENTS AND VISITORS ALIKE.

Geneva features an abundance of shops and restaurants and a scenic location along the Fox River. The suburb continues to see its population grow as Chicago's urban sprawl spreads further west.

The Fabyan Windmill, an authentic, fully operational Dutch windmill, is in near-perfect condition and listed on the National Register of Historic Places. The windmill was featured on a series of U.S. postage stamps, one of five selected for the "Windmills USA" book of stamps.

Geneva has one of the most extensive park districts in the area, serving over 40,000 people a year. The district has more than 30 parks with nature trails, athletic fields, aquatic and recreation centers, a skate park, and disc golf course. An expansive bike trail includes parts of the Fox River Trail and the Illinois Prairie Path.

Since 1991, Geneva has been home to the Kane County Cougars Minor League Baseball team, and since 2015, the Chicago Steel hockey team.

Geneva has a stop on Metra's Union Pacific West Line with daily service to Chicago or west to Elburn. The city is also within easy driving distance of the DuPage Airport.



JODY SEXTON

(630) 286-9204

JODYSEXTON@ATPROPERTIES.COM

