

**0S649 ELLITHORP LANE**  
GENEVA







4 BEDROOM  
3.1 BATH  
TAXES: 14,215

## SPACE TO DREAM BIG—THAT’S THE CORNER LOT ADVANTAGE

Live your dream in this stunning corner-lot home, nestled in the heart of Geneva’s coveted Mill Creek subdivision! Cherished by its original owners, this residence blends timeless comfort with modern functionality. Inside, you’ll be greeted by beautifully refinished hardwood floors and fresh, neutral paint throughout. The spacious floor plan offers 4 generously sized bedrooms and 3.5 bathrooms, including an expansive primary suite. The bright, open-concept kitchen turns every meal into a delight! With gleaming white cabinetry, luxurious granite countertops, sleek stainless steel appliances, and a spacious island with generous storage, it’s the perfect space to cook, entertain, and create lasting memories. It seamlessly flows into the oversized family room, ideal for hosting gatherings or enjoying cozy nights by the fire. The thoughtful layout continues with a main-floor den and laundry room, keeping you effortlessly connected to the rhythm of daily living. The unfinished basement, complete with rough-in plumbing, is a blank canvas with endless potential to customize and make your own. Step outside to enjoy a sprawling yard framed by mature trees and a charming patio which offers an inviting space for outdoor entertaining or peaceful evenings under the stars. Mill Creek is a vibrant community offering unmatched amenities, including two golf courses, tennis and pickleball courts, volleyball courts, multiple playgrounds, a community pool (with membership), clubhouse, miles of scenic trails, an ice cream shop, Mill Creek Market and Village Center, Tanna Tap restaurant, and more! All of this, just minutes from two Metra stations and the boutique charm of downtown Geneva’s restaurants and shops. Don’t miss your chance to corner the market and make this incredible home yours!





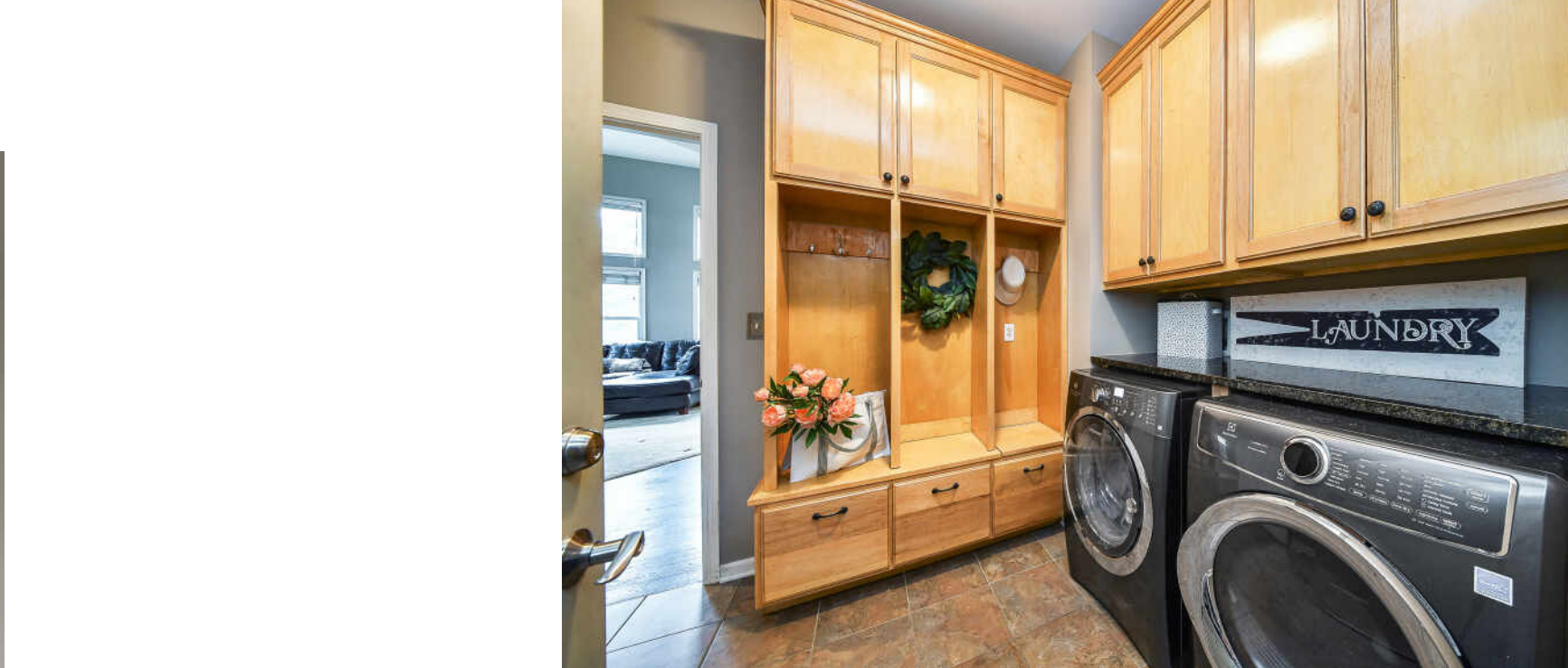
























## DONNA BODE

(630) 667-7182

630-377-1700

DONNABODE@ATPROPERTIES.COM



All specifications, features, designs, price, assessments, taxes and materials are subject to change without notice. Depicted floor plans and architectural renderings are only an artist's impression.

