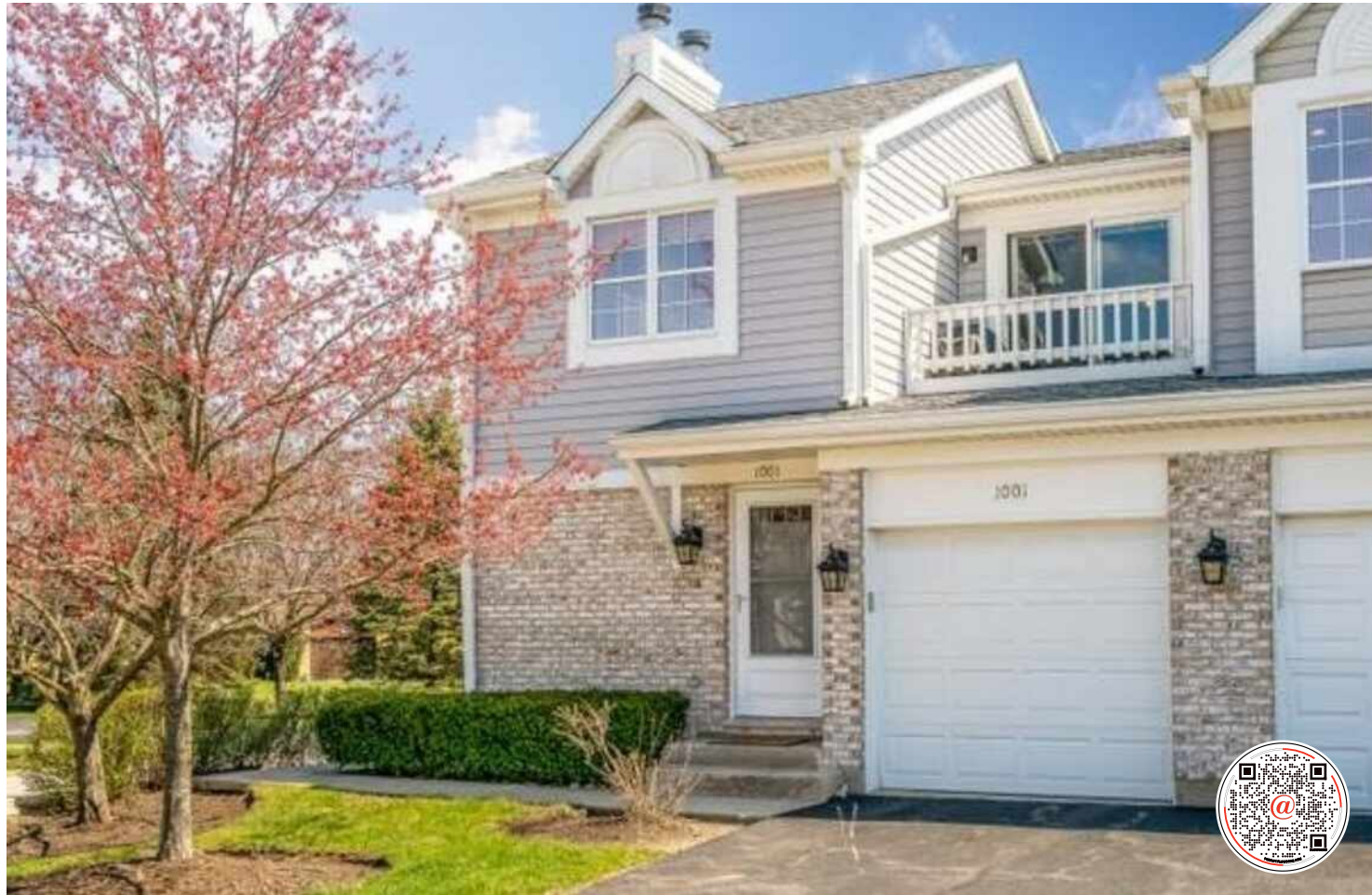


**1001 N COVE DRIVE #1**  
PALATINE





**ROOM DIMENSIONS**

LIVING ROOM : 19' × 13'

DINING ROOM : 11' × 15'

KITCHEN : 12' × 11'

PRIMARY BEDROOM : 12' × 19'

SECOND BEDROOM : 10' × 12'

**2 BEDROOM**

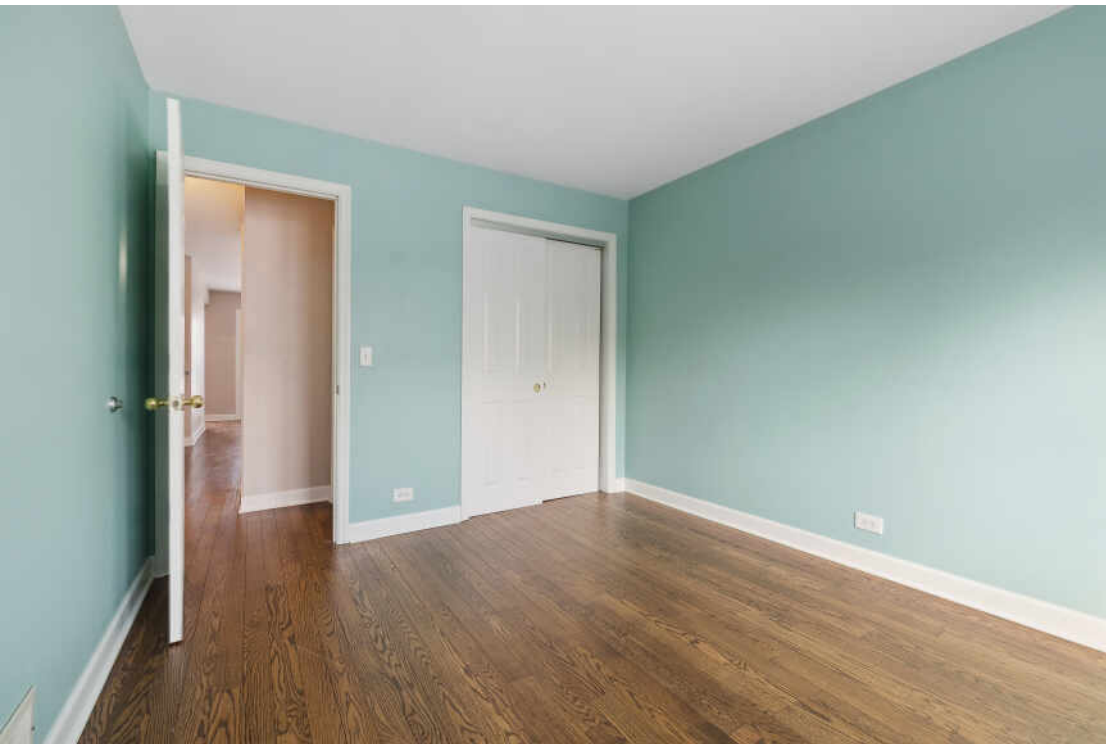
**2 BATH**

**TAXES: \$4,849**

**ASSESSMENTS: \$305 / MONTH**

Welcome to your future home! This exquisite corner unit boasts vaulted ceilings and beautiful hardwood flooring throughout adding elegance to the open concept living space. Bright living and dining room flooded with natural sunlight from brand new windows (2023) is anchored by a wood burning fireplace creating a welcoming entertaining space. The kitchen provides ample cabinet space and newer stainless-steel appliances. (2020) 2 Large Bedrooms and 2 full baths finish the 1st floor. The primary bedroom has a huge walk-in closet and ensuite bath. Nestled in a tranquil neighborhood, this residence provides a peaceful retreat. The roomy basement not only provides ample storage but also presents the exciting potential for you to customize and finish it according to your preferences. The attached 1-car garage comes with a convenient Slatwall organization system and newer garage door (2016) Numerous updates create a worry free environment, including newer furnace (2016/2017), AC (2016), HWH (2019), a stylish Anderson Slider Patio door (2018), new roof and gutters (2020) and new windows throughout( 2023). Don't wait-come and experience the unique charm and modern comforts of this property today!







SIZES AND DIMENSIONS ARE APPROXIMATE, ACTUAL MAY VARY.





## THE VILLAGE OF **PALATINE** HAS MASTERED THE ART OF BALANCE.

The growing community has a healthy mix of residents who enjoy its friendly suburban lifestyle and businesses that fuel the local economy.

The village embraces growth to support a wealth of amenities and services. The Palatine Park District has 28 parks, an 18-hole golf course, and a variety of classes from fitness and sports to arts and crafts. Palatine offers scenic views with winding trails, beautiful residential areas, and nearby Deer Grove Forest Preserve.

Palatine's downtown business district is both charming and self-sufficient for residents. Restaurants include a mix of local favorites from classic eateries to upscale breweries, as well as a variety of local bars. The village hosts several street festivals and a popular farmers market.

Commuters have access to the Chicago Loop with the Palatine Metra station and I-90. The nearby Chicago Executive Airport offers private and corporate aircraft services.







## KATIE COOPER

773.575.0720

7734720200

KATHLEENCOOPER@ATPROPERTIES.COM



katie cooper



CHRISTIE'S  
INTERNATIONAL REAL ESTATE