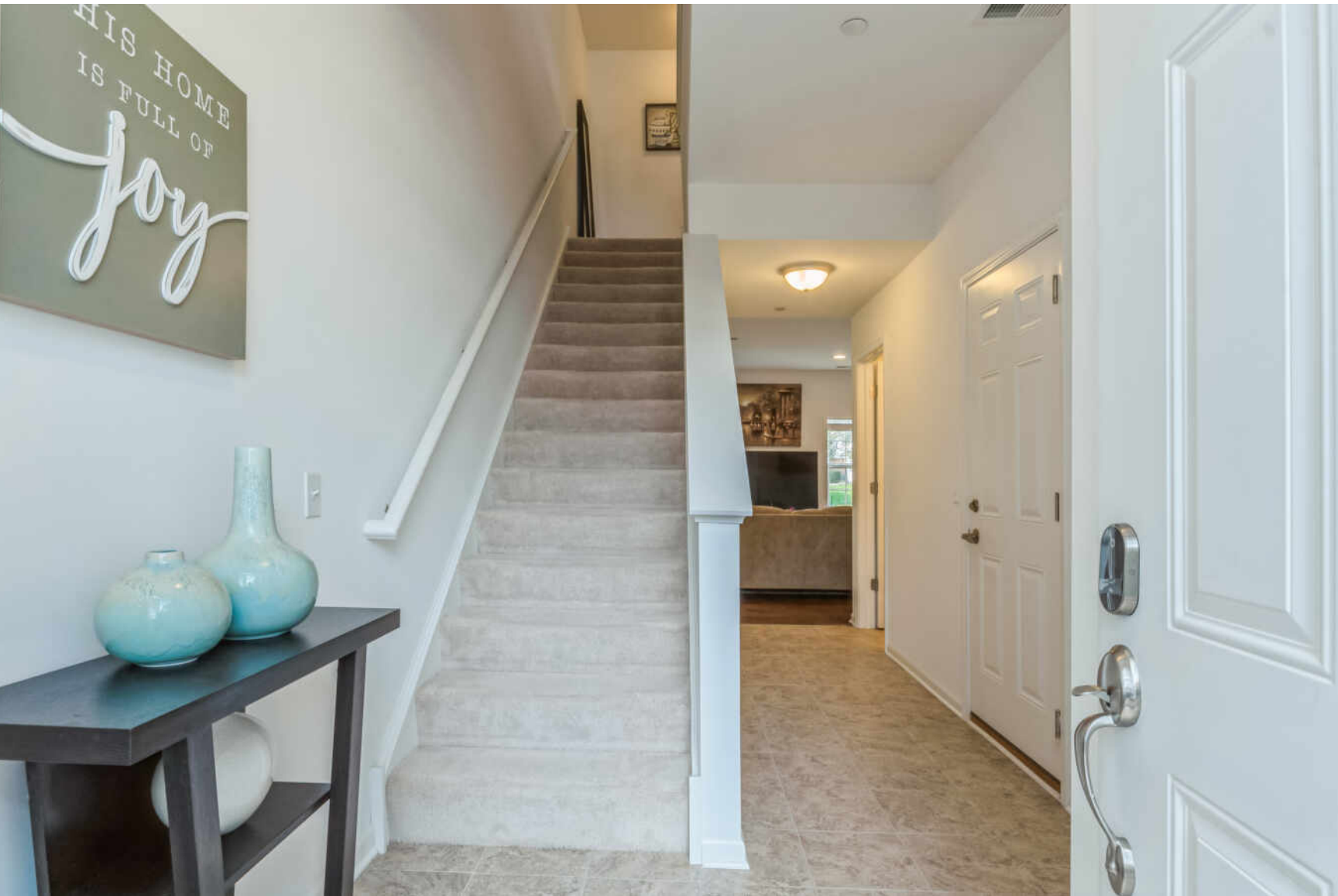


1004 GREEN MEADOW AVENUE, VERNON HILLS
POETS' CORNER





ROOM DIMENSIONS

- FOYER : 7' × 5'
- LIVING ROOM : 15' × 13'
- DINING ROOM : 14' × 12'
- KITCHEN : 14' × 10'
- MASTER BEDROOM : 18' × 12'
- WALK IN CLOSET : 8' × 6'
- 2ND BEDROOM : 12' × 10'
- 3RD BEDROOM : 12' × 10'
- LOFT : 8' × 7'
- LAUNDRY ROOM : 6' × 3'

3 BEDROOM
2.1 BATH

AMAZING, MODERN, TWO-STORY TOWNHOME

Poets' Corner is a small enclave of townhomes built in 2014 and nestled in the heart of New Century Town backing to the walking path that winds through the green belt area providing access to parks, playgrounds and ball fields. You can walk to Big and Little Bear Lakes in Century Park.

There is also easy access to all the elementary schools, the library, the park district building and the aquatic center.

In this incredible location you find an amazing, modern, two-story townhome.

The ceramic tile entry leads to a wide open floor plan with beautiful hardwood flooring and recessed lighting on the first floor.

The kitchen has gorgeous white 42" cabinetry, granite counter tops, glass tile backsplash and a large center island with breakfast bar.

This is open to a generous dining area with a bay window and a west facing sliding glass door that opens to the patio overlooking the walking path. There is room to plant your own vegetable garden.

The dining area seamlessly flows into the living room making the space ideal for entertaining.

The powder room rounds out the first floor.

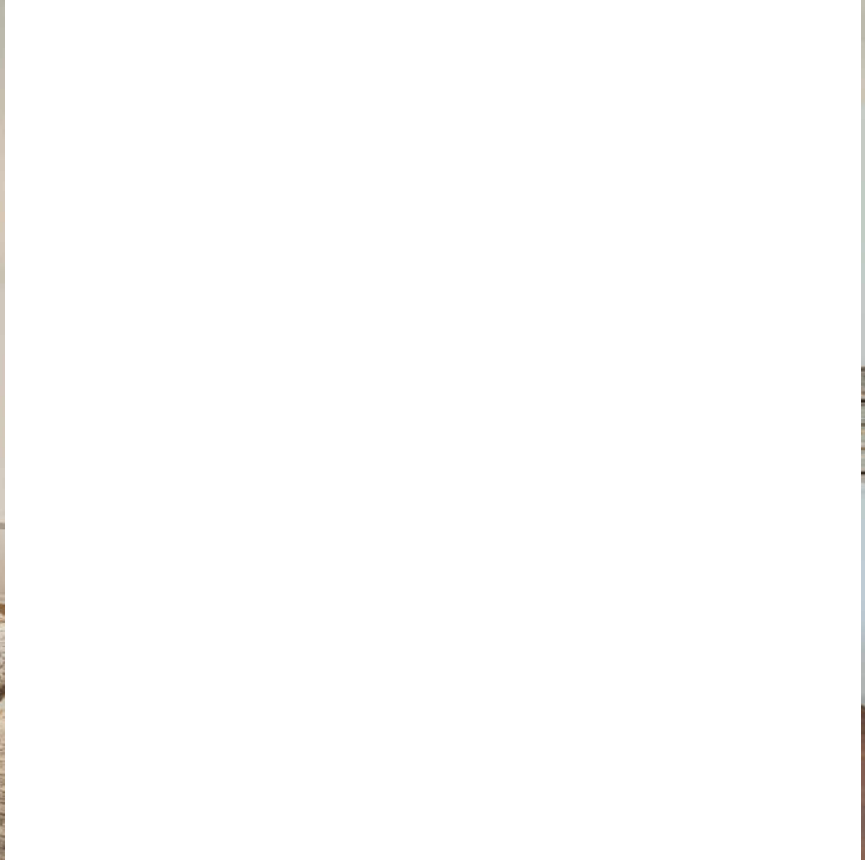
Upstairs is a large primary bedroom suite complete with a roomy walk-in closet and primary bath with dual sink vanity and a separate area for the water closet and shower/bath tub.

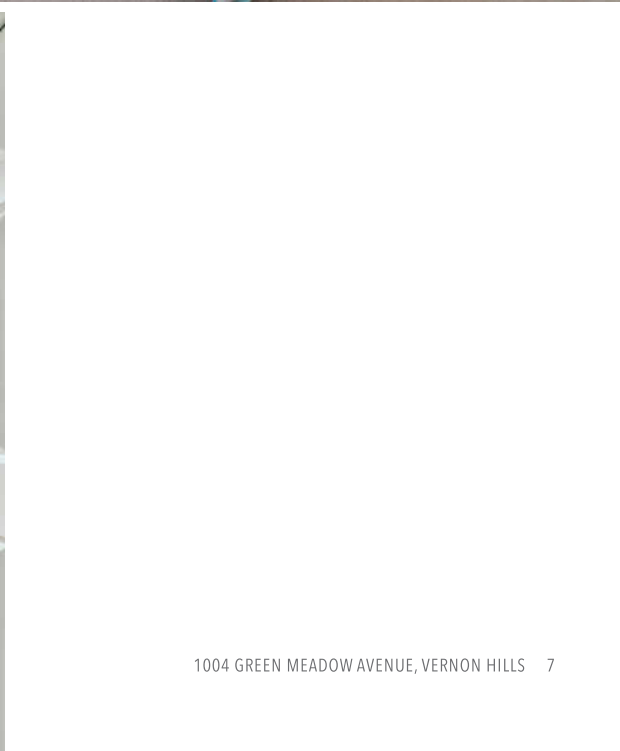
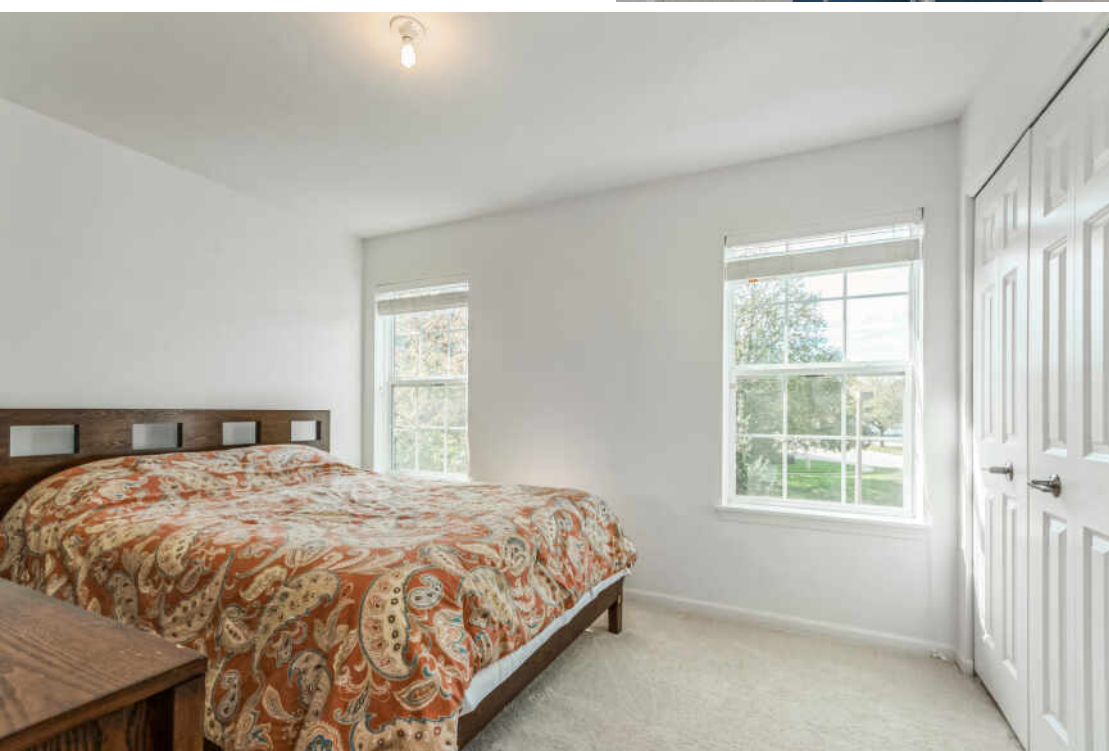
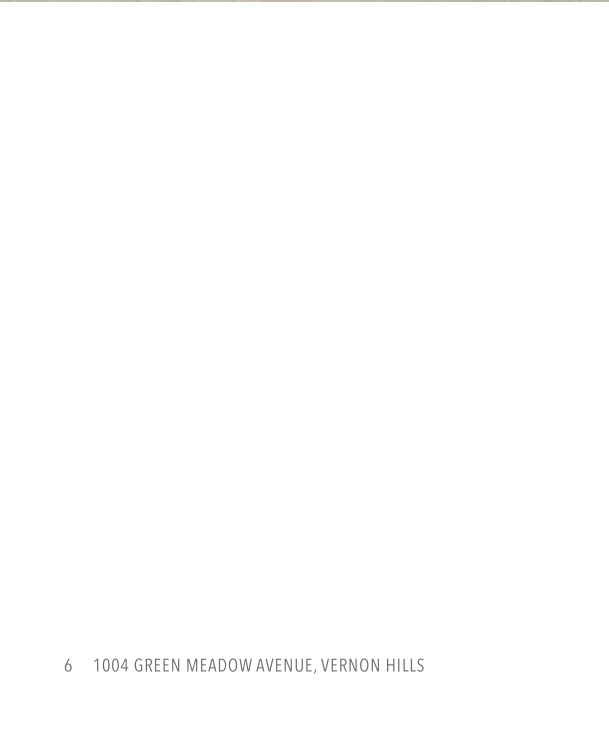
Just outside the primary bedroom is a loft area which is an ideal home office work space.

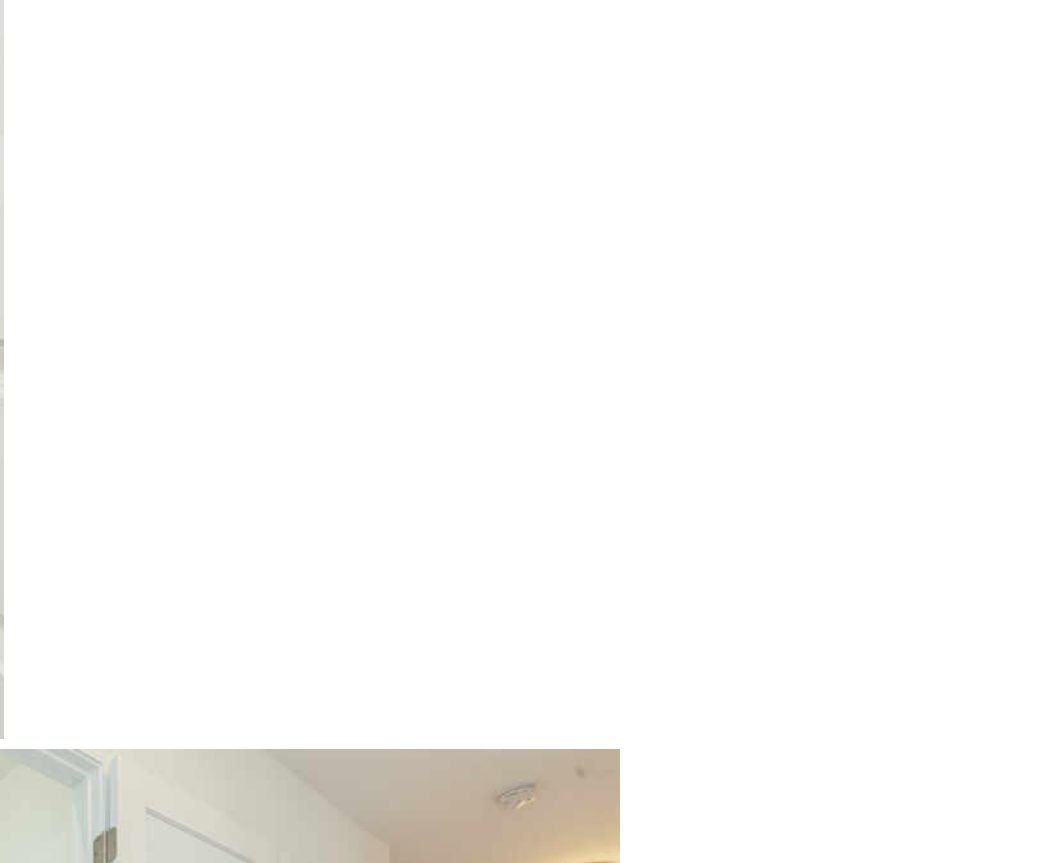
The 2nd and 3rd bedrooms are good sized each with double door closets and supported by an 2nd full bath in the hall.

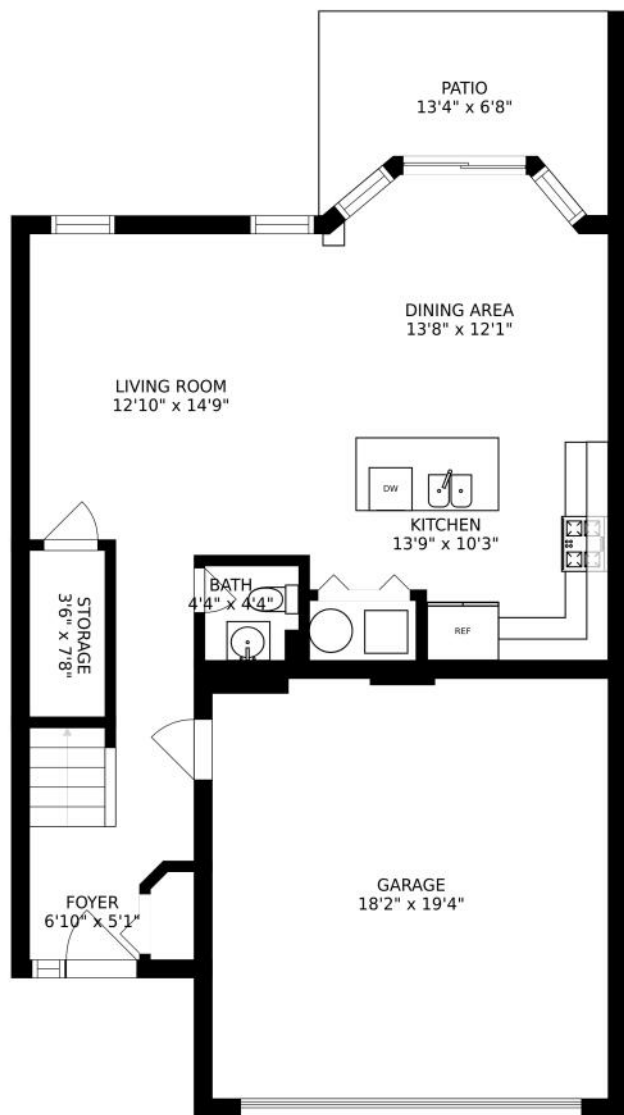
The washer and dryer are also conveniently located on the second floor.

Enjoy the benefits of the 2 car attached garage and the snow removal and lawn care services provided by the homeowners association.

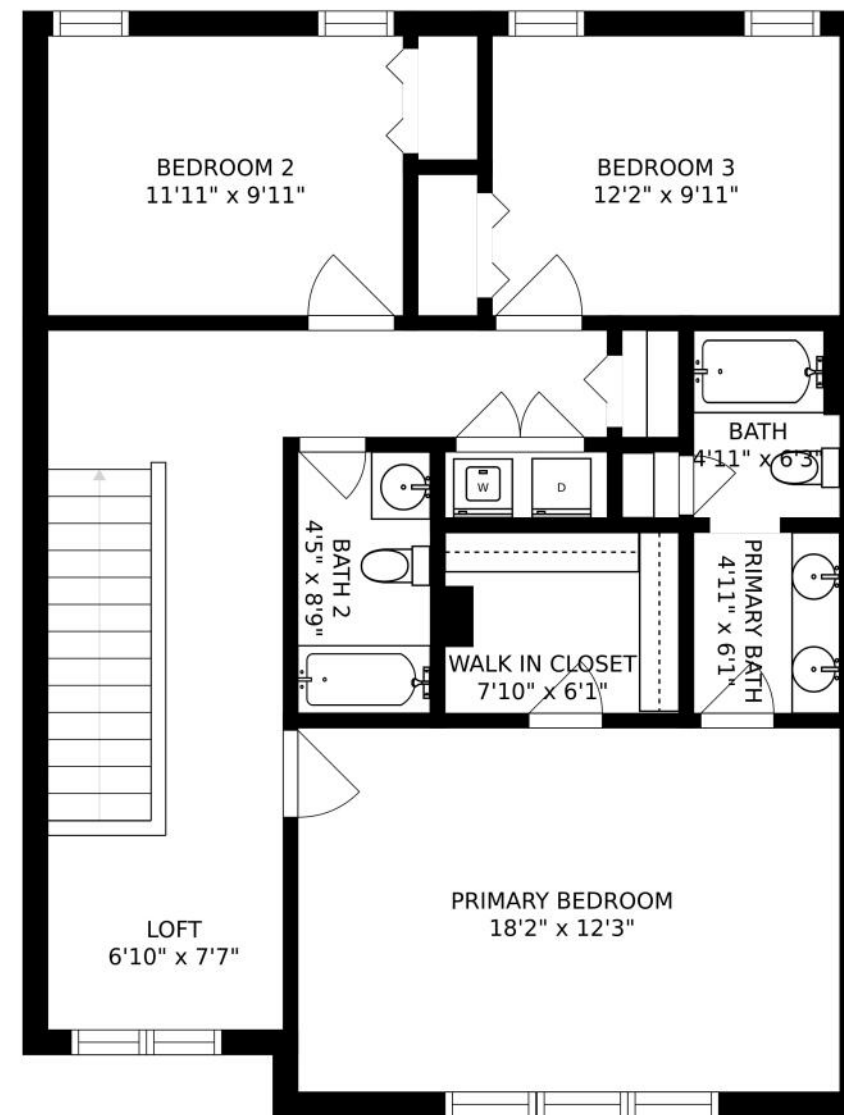








SIZES AND DIMENSIONS ARE APPROXIMATE, ACTUAL MAY VARY.



SIZES AND DIMENSIONS ARE APPROXIMATE, ACTUAL MAY VARY.



TERRY WILKOWSKI

REAL ESTATE BROKER

DIRECT: (847) 682-1549

TWILKOWSKI@ATPROPERTIES.COM



MARY GIBBS-MOODHE

REAL ESTATE BROKER

DIRECT: (847) 902-3357

MGIBBS@ATPROPERTIES.COM



@properties®

1004GREENMEADOW.INFO