

1006 FOREST AVENUE  
EVANSTON







#### ROOM DIMENSIONS

LIVING ROOM : 25' × 17'

KITCHEN : 16' × 12'

DINING ROOM : 14' × 13'

FAMILY ROOM : 14' × 11'

PRIMARY BEDROOM : 15' × 14'

WALK IN CLOSET : 10' × 10'

BEDROOM 2 : 12' × 10'

BEDROOM 3 : 11' × 10'

BEDROOM 4 : 12' × 7'

3RD FLOOR FAMILY ROOM : 13' × 11'

BEDROOM 5 : 13' × 11'

BEDROOM 6 : 16' × 13'

RECREATION ROOM : 30' × 13'

OFFICE : 11' × 7'

MUDROOM : 14' × 5'

STORAGE : 12' × 7'

WORKSHOP : 17' × 11'

STORAGE : 13' × 8'

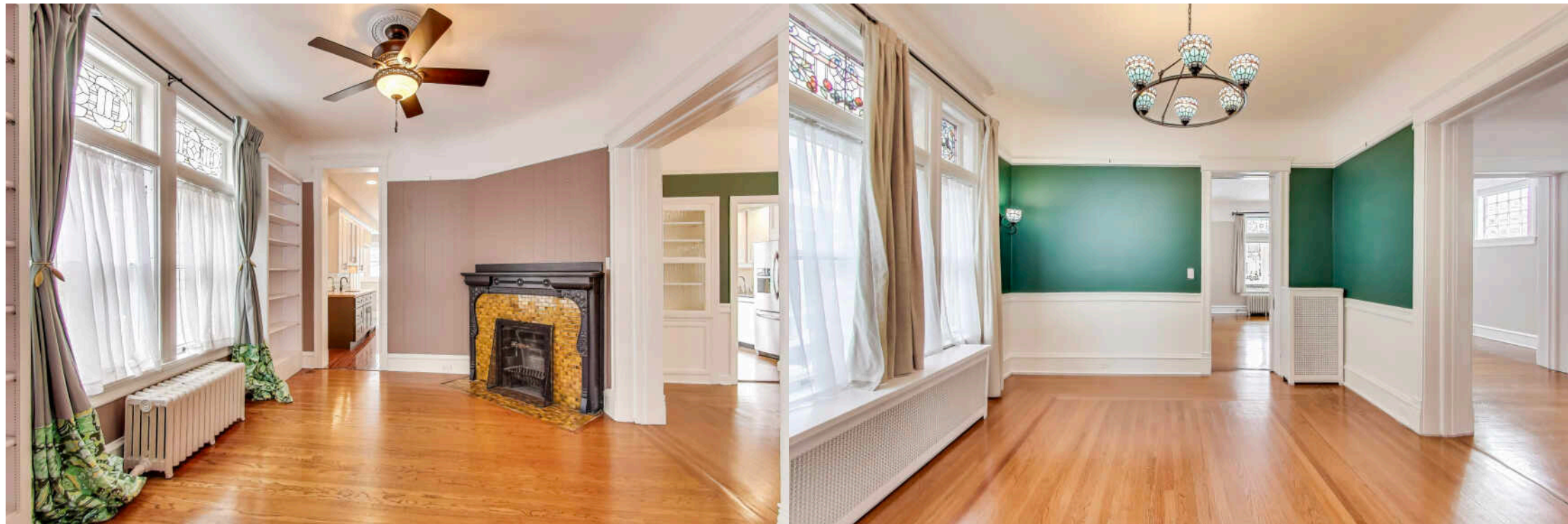
#### 6 BEDROOM

#### 3.1 BATH

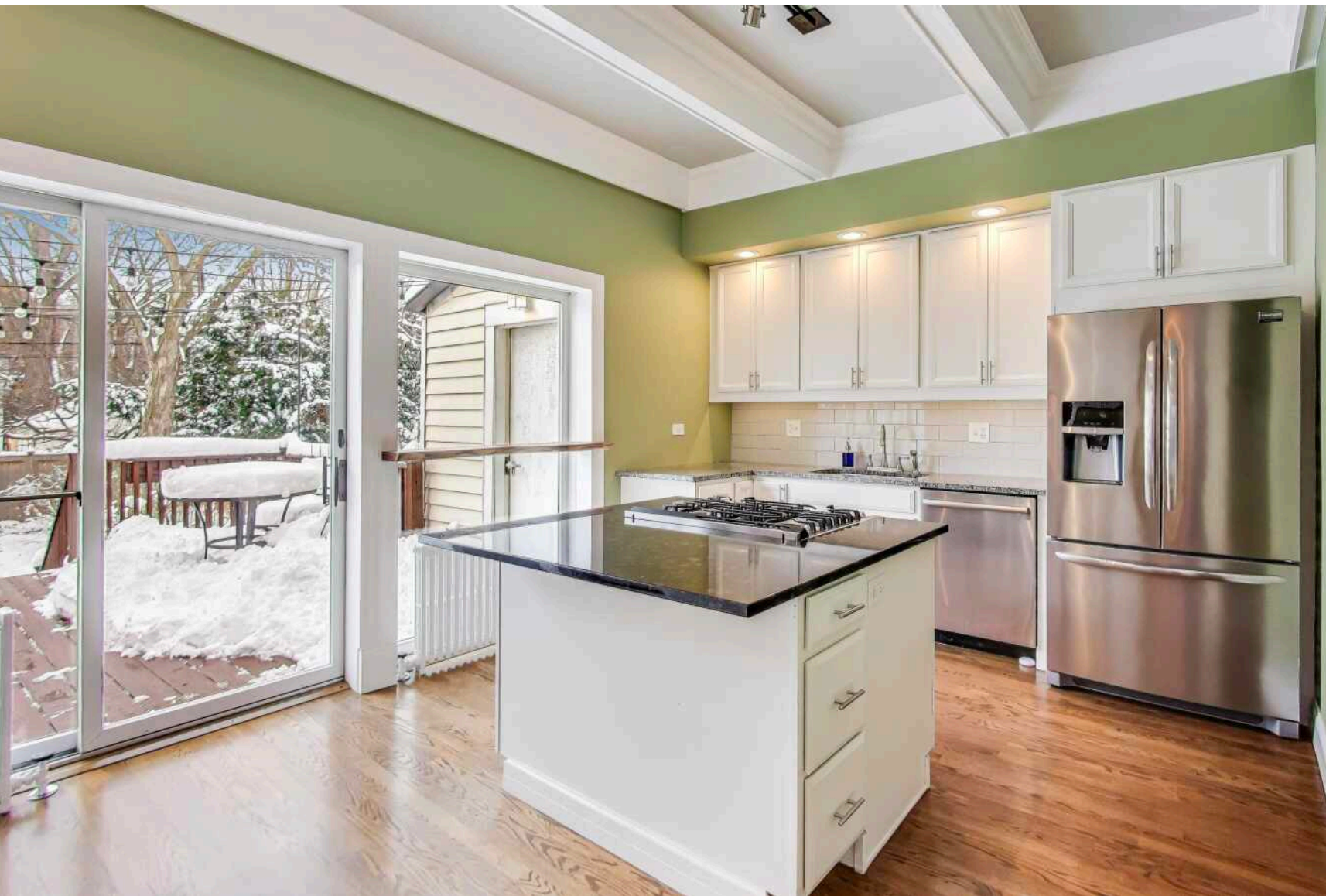
## UPDATED 3-STORY VICTORIAN IN SE EVANSTON

- Set in the Evanston Lakeshore Historic District, this light-filled 6 bed/3.5 bath Victorian offers incredible space, beautiful architectural detail, and a floor plan ideal for both everyday living and entertaining
- A classic front porch and welcoming foyer opens to a spacious living room with wood-burning fireplace and a separate dining room with built-in storage
- The bright, airy kitchen features a large granite island, white cabinetry, stainless steel appliances, and patio doors that frame the landscaped backyard and lead to an oversized back deck with privacy lattice, creating seamless indoor/outdoor flow
- A cozy den with second fireplace and a newly renovated, well-designed mudroom with butler pantry, leading to a full-size laundry room complete the main level
- 2nd floor offers four bedrooms and two full baths, including a rare primary suite with an enormous, full room walk-in closet with built-in organizers and updated ensuite bath with large walk-in shower
- The fully finished 3rd floor provides a bonus family room, two additional bedrooms and a full hall bath with subway tile walk-in shower
- Newly finished (2023) basement offers a rec/game room and office with glass panel French doors, along with a workshop room, mechanical room and storage
- All of this in a premier southeast Evanston location, just blocks to Lake Michigan, the "L," Metra, parks, NU shuttle, schools, restaurants and shopping
- A rare combination of historic charm, generous space, numerous updates and an unbeatable close-to-everything setting

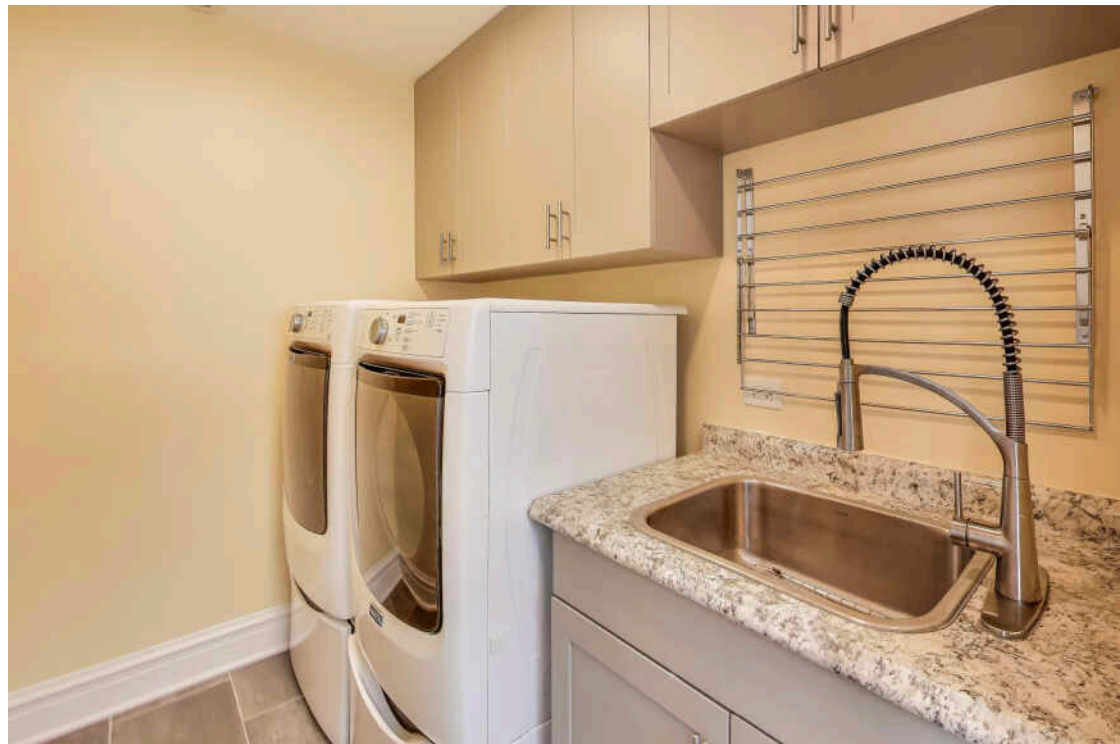




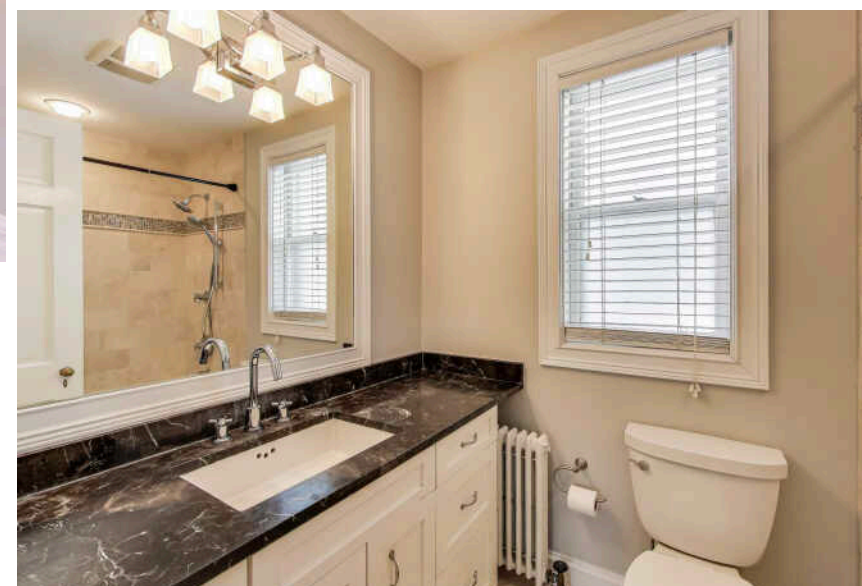
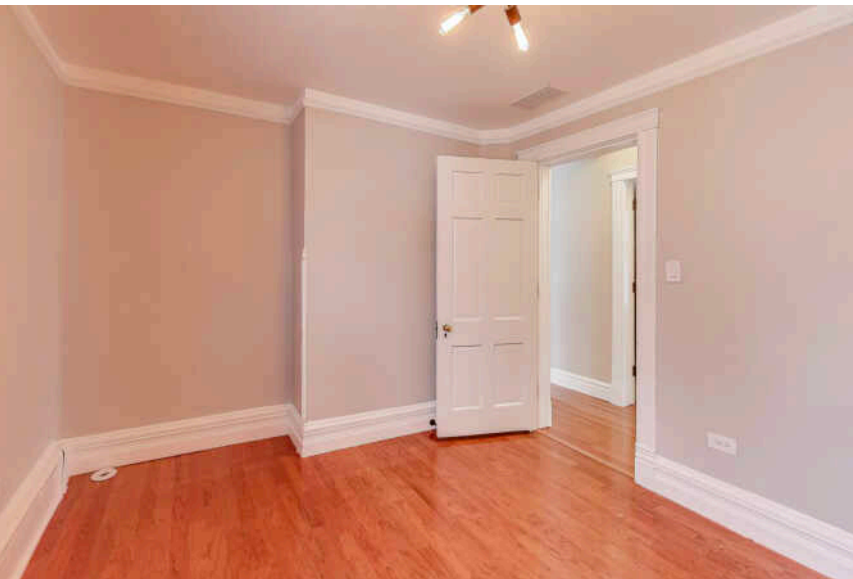








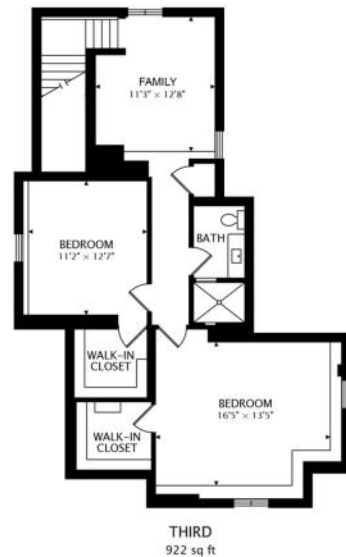
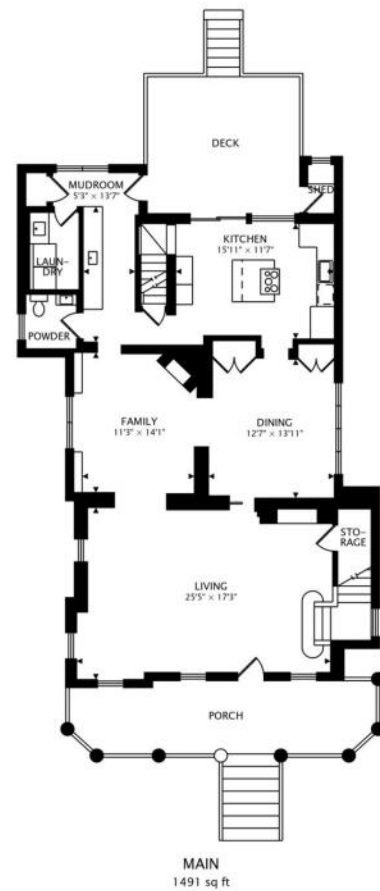
















## SCOTT STAVISH

(773) 879-4444

SCOTTSTAVISH@ATPROPERTIES.COM

SCOTTSTAVISH.COM

# SCOTTSTAVISH GROUP



CHRISTIE'S  
INTERNATIONAL REAL ESTATE