



100 E 14TH STREET #1903
SOUTH LOOP

@properties®

CHRISTIE'S
INTERNATIONAL REAL ESTATE



ROOM DIMENSIONS

LIVING ROOM : 23' × 14'

KITCHEN : 14' × 11'

DEN : 7' × 7'

BEDROOM : 12' × 11'

FOYER : 12' × 5'

BALCONY : 22' × 5'

GORGEOUS 1 BEDROOM + DEN WITH UNOBSTRUCTED VIEWS

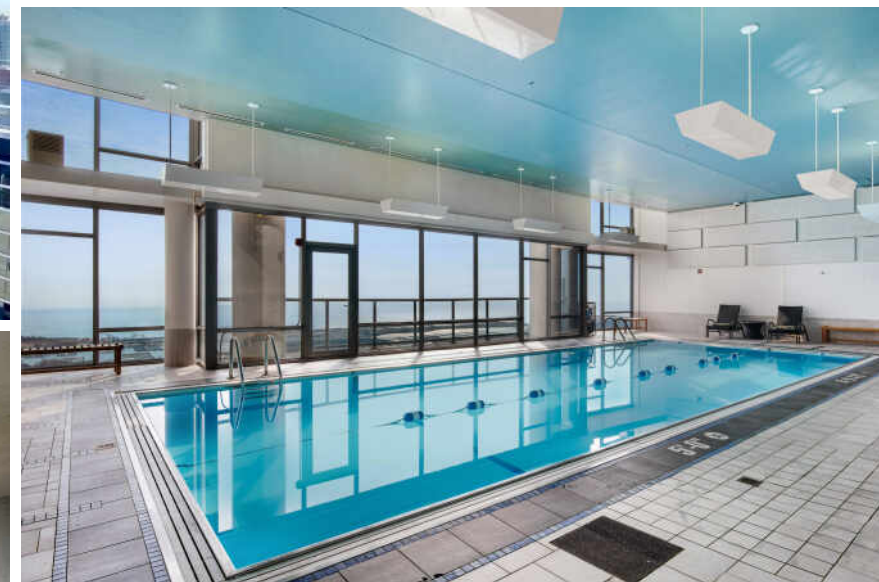
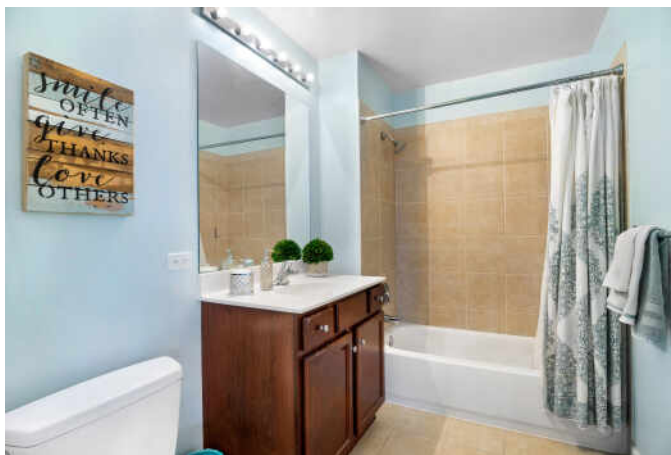
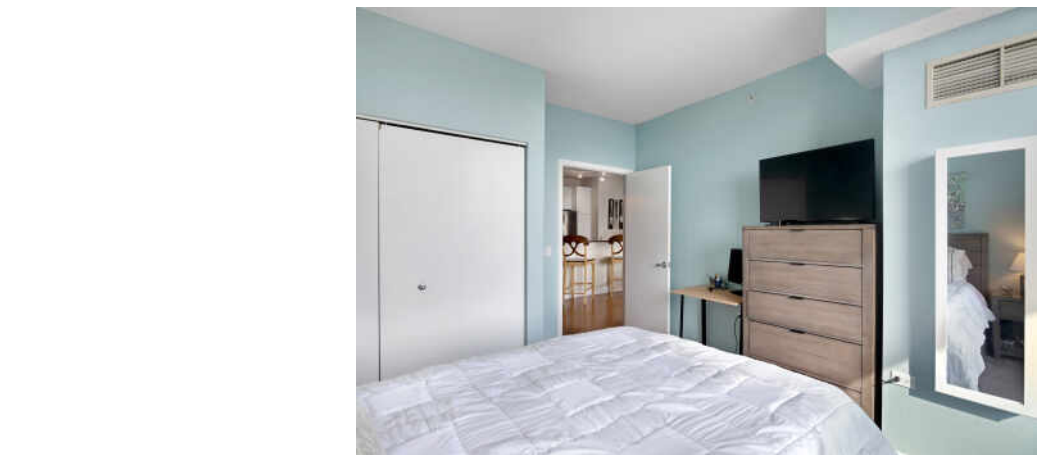
Building is perfectly located in the South Loop with easy access to the Lakefront, parks, CTA, neighborhood grocery stores, Soldier Field, Northerly Island, restaurants, bars, Burnham Harbor and Lake Shore Drive.

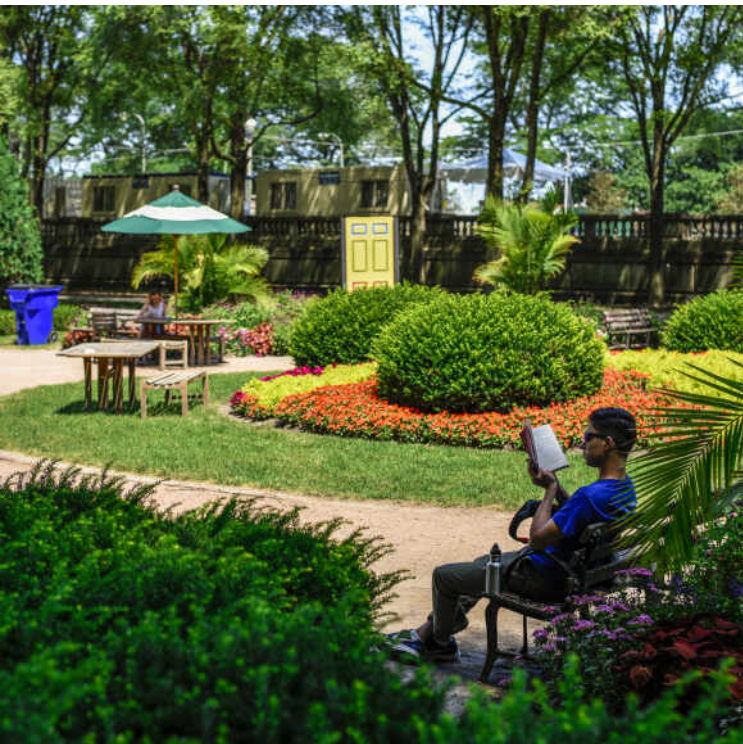
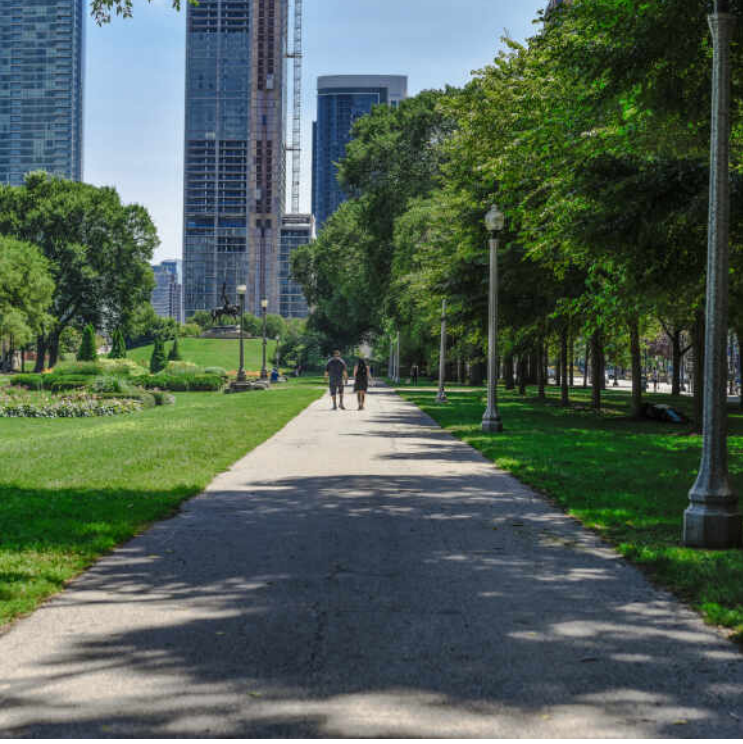
- Stunning views from every room
- Floor to ceiling windows
- East facing views of city, Soldier Field & Lake Michigan
- Expansive Balcony
- White Kitchen with an abundance of cabinet space
- Large Breakfast Bar with granite counters
- All Stainless-Steel Kitchen appliances
- Den offers flex space for home office or home gym
- In-unit washer and dryer
- Penthouse pool, gym, and community room
- Premiere Garage parking available for purchase

1 BEDROOM
1 BATH









CHARACTERIZED BY TOWERING HIGH
RISES AND HISTORIC POCKETS THAT
REFLECT THE AREA'S STORIED PAST, THE
SOUTH LOOP IS A DISTINCTIVE CHICAGO
NEIGHBORHOOD.

Chicago's original Gold Coast in the late 19th century, the South Loop was once home to the likes of Marshall Field, George Pullman, and Philip Armour. Today the vibrant neighborhood is known for its access to the lakefront, shops, restaurants, parks, Museum Campus, and The Loop.

The South Loop is comprised of several historic areas including Printer's Row, which features a number of buildings that have been converted into residential lofts, along with Motor Row District and Prairie Avenue District. Meanwhile, several apartment and condominium buildings are under construction, bringing thousands of new residences to the neighborhood.

The South Loop's housing boom has brought with it an influx of retailers along with eateries and nightlife on South Michigan Avenue. The Roosevelt Collection is a popular destination featuring a movie theater and an assortment of retailers.

Museum Campus is the cultural hub of the South Loop featuring attractions including the Field Museum, Shedd Aquarium, Adler Planetarium, and Soldier Field. Residents also enjoy being in close proximity to Northerly Island and public transportation including the CTA's Roosevelt station.



NOTES _____



DARBY ZWAGERMAN

(773) 294-9147

DARBY@ATPROPERTIES.COM

SOLDWITHZWAG.COM



CINDY CLEVELAND COOK

(773) 383-4345

CINDYCOOK@ATPROPERTIES.COM

WWW.CHICAGOANDHARBORCOUNTRYHOMES.COM



CHRISTIE'S
INTERNATIONAL REAL ESTATE