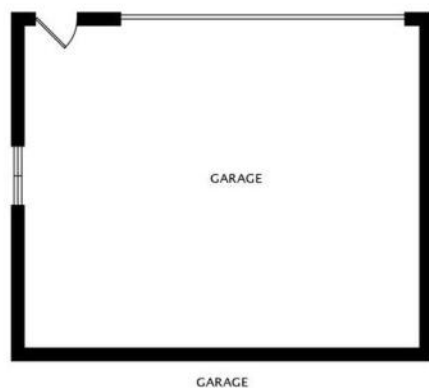
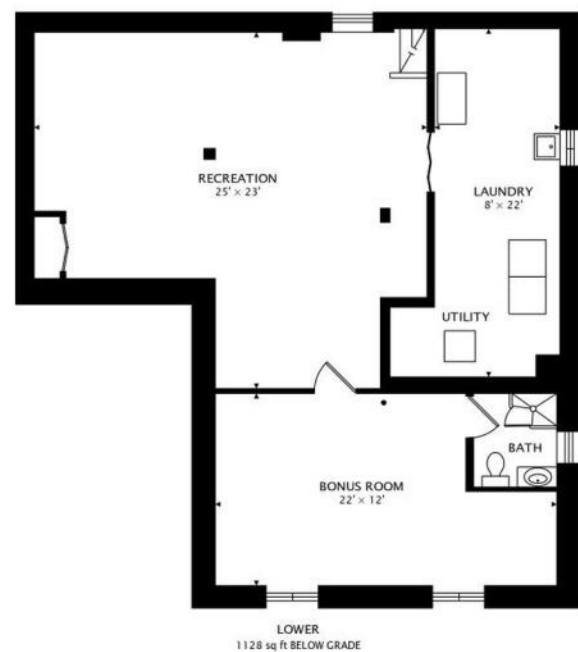
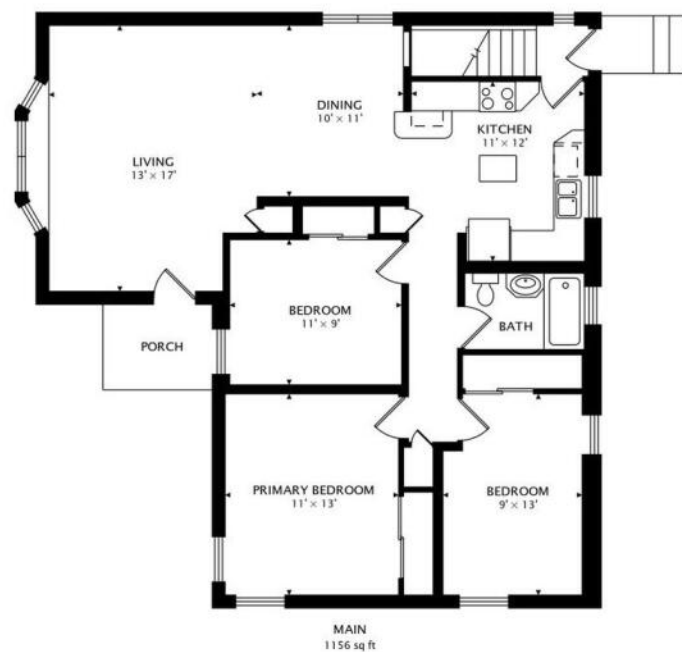


1010 LYFORD LANE
WHEATON, IL 60189





ROOM DIMENSIONS

- LIVING : 13' x 17'
- DINING : 10' x 11'
- KITCHEN : 11' x 12'
- PRIMARY BEDROOM : 11' x 13'
- BEDROOM : 9' x 13'
- BEDROOM : 11' x 9'
- RECREATION : 25' x 23'
- BONUS : 22' x 12'
- LAUNDRY / UTILITY : 8' x 22'

3 BEDROOM
2 BATH

1010 LYFORD LANE WHEATON, IL 60189

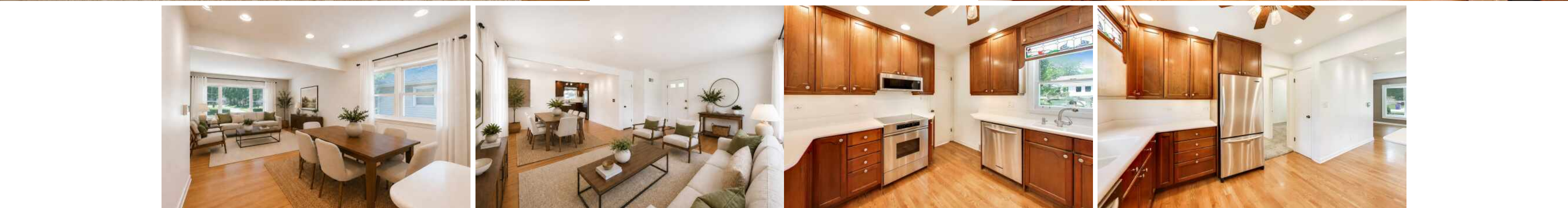
Lovingly maintained by the same family for 66 years, this impeccably cared-for ranch beautifully blends timeless mid-century charm with thoughtful, high-end updates. Offering 3 bedrooms, 2 full bathrooms, and a versatile partially finished basement, this home is truly move-in ready.

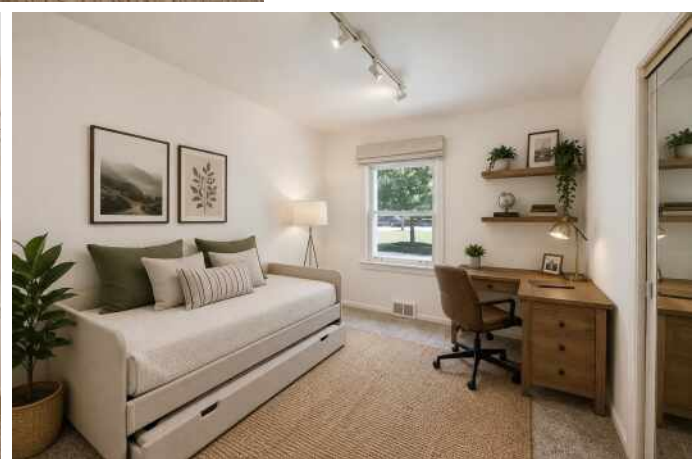
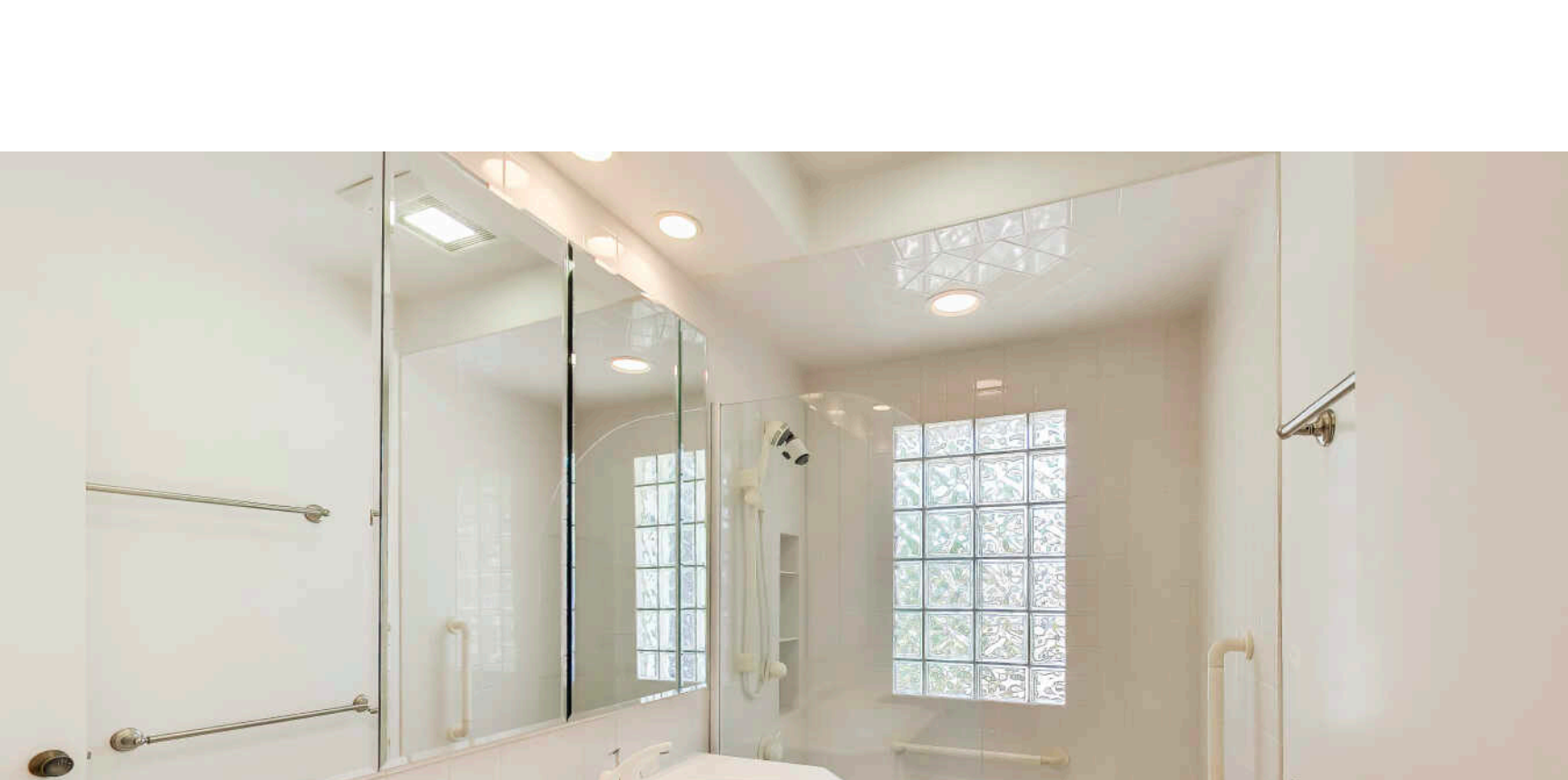
Sun-filled living spaces feature rich hardwood floors, custom Hunter Douglas shades, and a spacious living room anchored by a large bay window. The custom Autumn Woods kitchen showcases premium cherry cabinetry, Corian countertops, a movable island, pantry, stainless-steel appliances, integrated USB outlets, and a charming stained-glass accent above the sink.

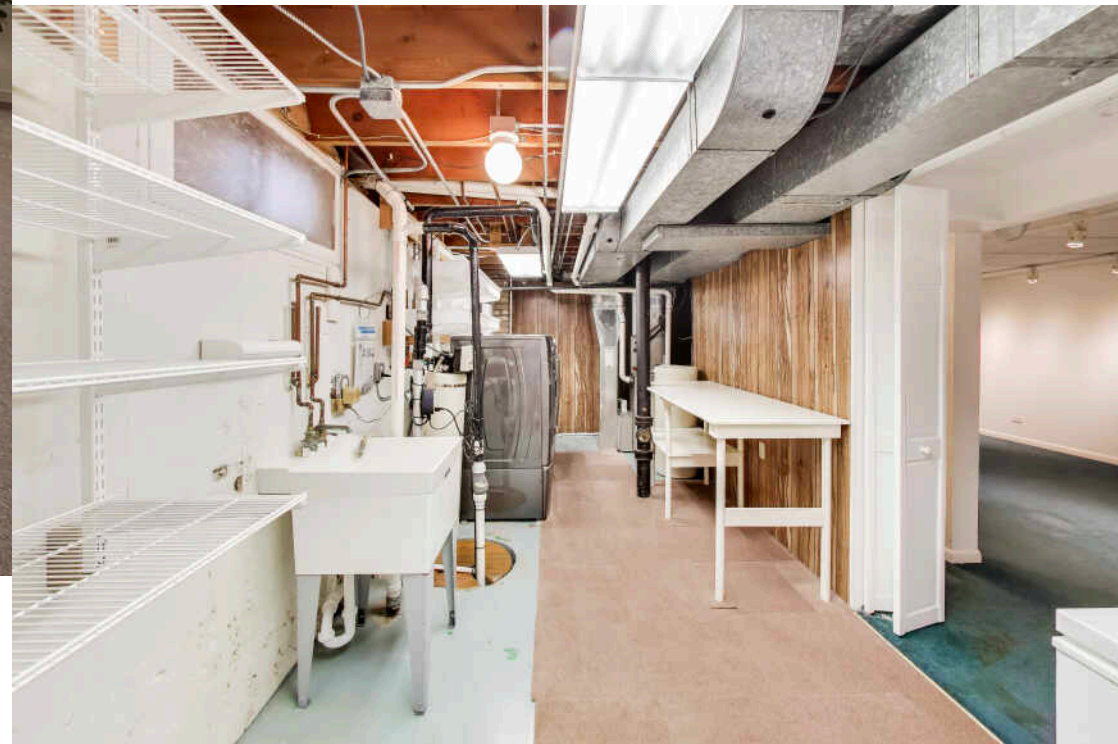
Three comfortable bedrooms feature custom-organized closets and original hardwood floors beneath the carpeting, while both full bathrooms have been beautifully redesigned by Drury Design. The finished basement expands the living space with a large recreation room, second full bath, oversized laundry/utility room, and a flexible bonus room ideal for a home office, gym, workshop, or future fourth bedroom. Thoughtful updates include a 5-year-old HVAC system, tankless water heater, Culligan water purification system, newer washer and dryer, whole-home surge protector, and a whole-house Kohler generator.

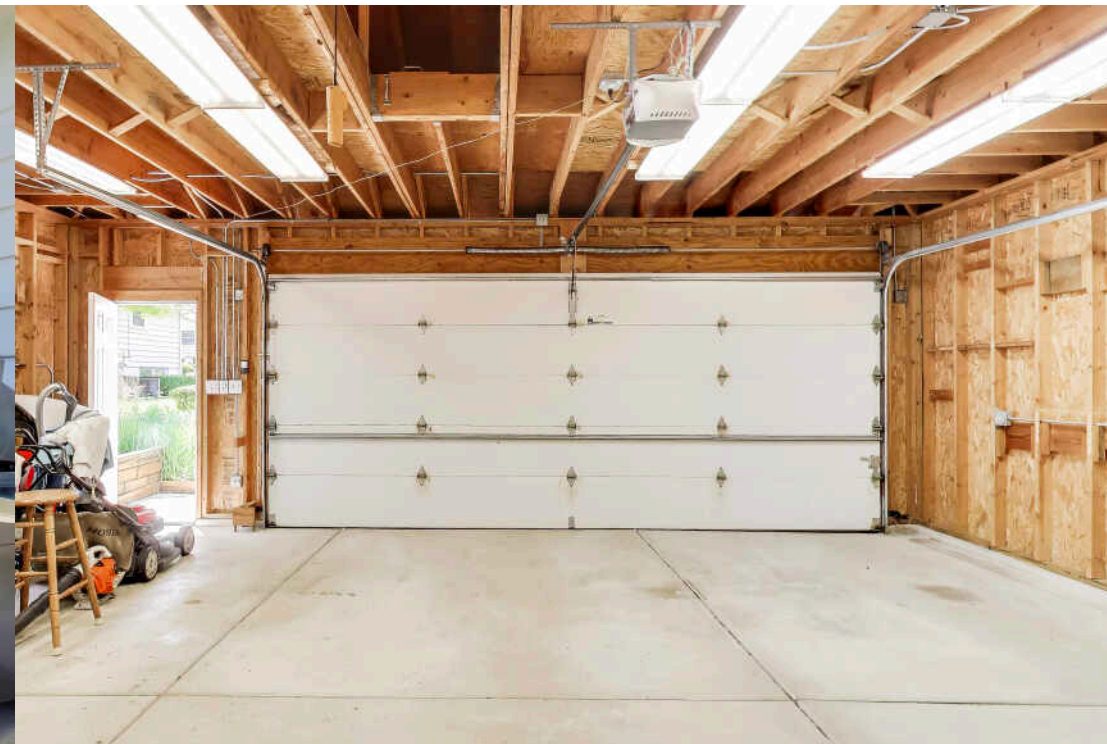
Outside, enjoy a beautifully landscaped backyard featuring mature gardens, a pergola, outdoor speakers, built-in bench, and an outdoor Viking Professional grill with side burners—perfect for entertaining. An oversized heated 2.5-car garage with overhead storage completes the home.

Ideally located on a quiet, tree-lined street, you're just moments from the Illinois Prairie Path, Westhaven Park, Madison Elementary School, downtown Wheaton, Metra, I-88, and I-355. Lovingly maintained and thoughtfully improved over six decades, this exceptional home is ready to welcome its next chapter.











CHRISTINA LOTZER

(847) 302-2192

CHRISTINALOTZER@ATPROPERTIES.COM



CHRISTINA LOTZER