

**1010 OAKLAND DRIVE**  
BARRINGTON







#### ROOM DIMENSIONS

FOYER : 13' × 15'

LR : 14' × 19'

DR : 13' × 16'

KITCHEN : 14' × 15'

BREAKFAST ROOM : 11' × 15'

FAMILY ROOM : 21' × 17'

HOME OFFICE : 13' × 12'

BR 1 : 15' × 21'

BR 2 : 12' × 14'

BR 3 : 14' × 14'

BR 4 : 14' × 14'

REC ROOM : 46' × 36'

4 BEDROOM

4.1 BATH

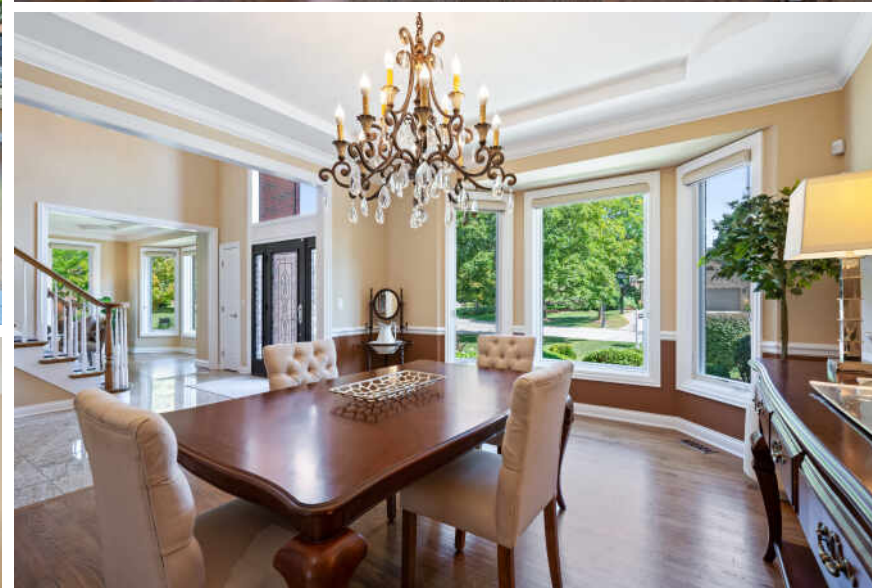
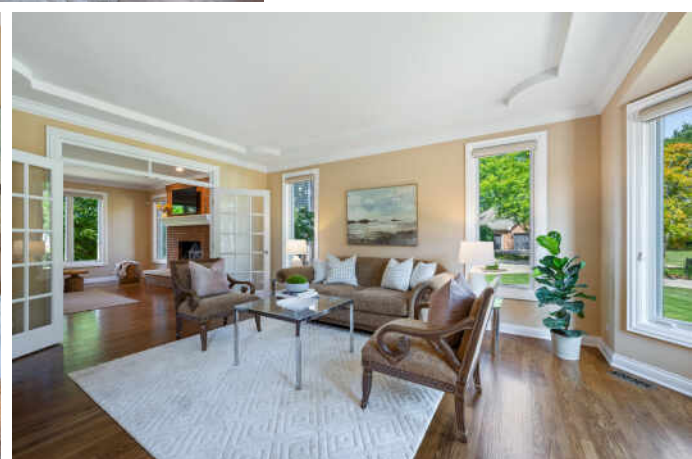
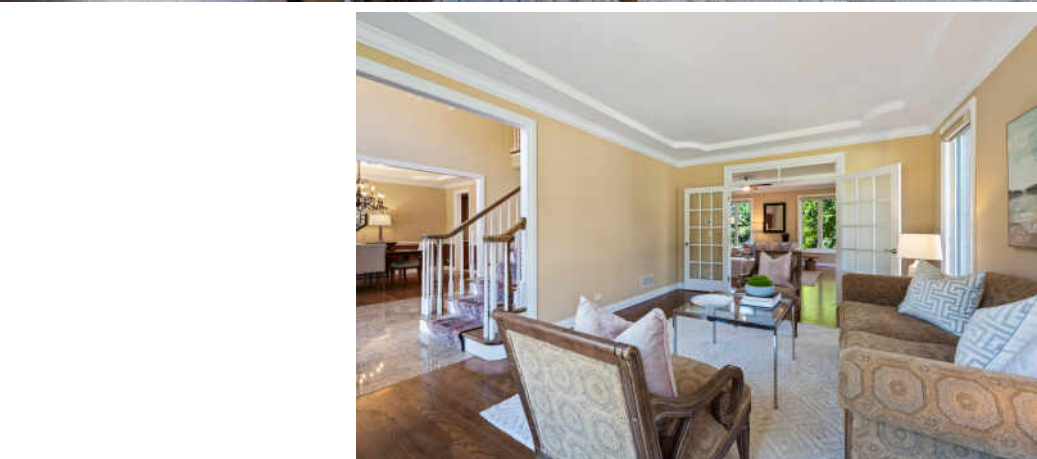
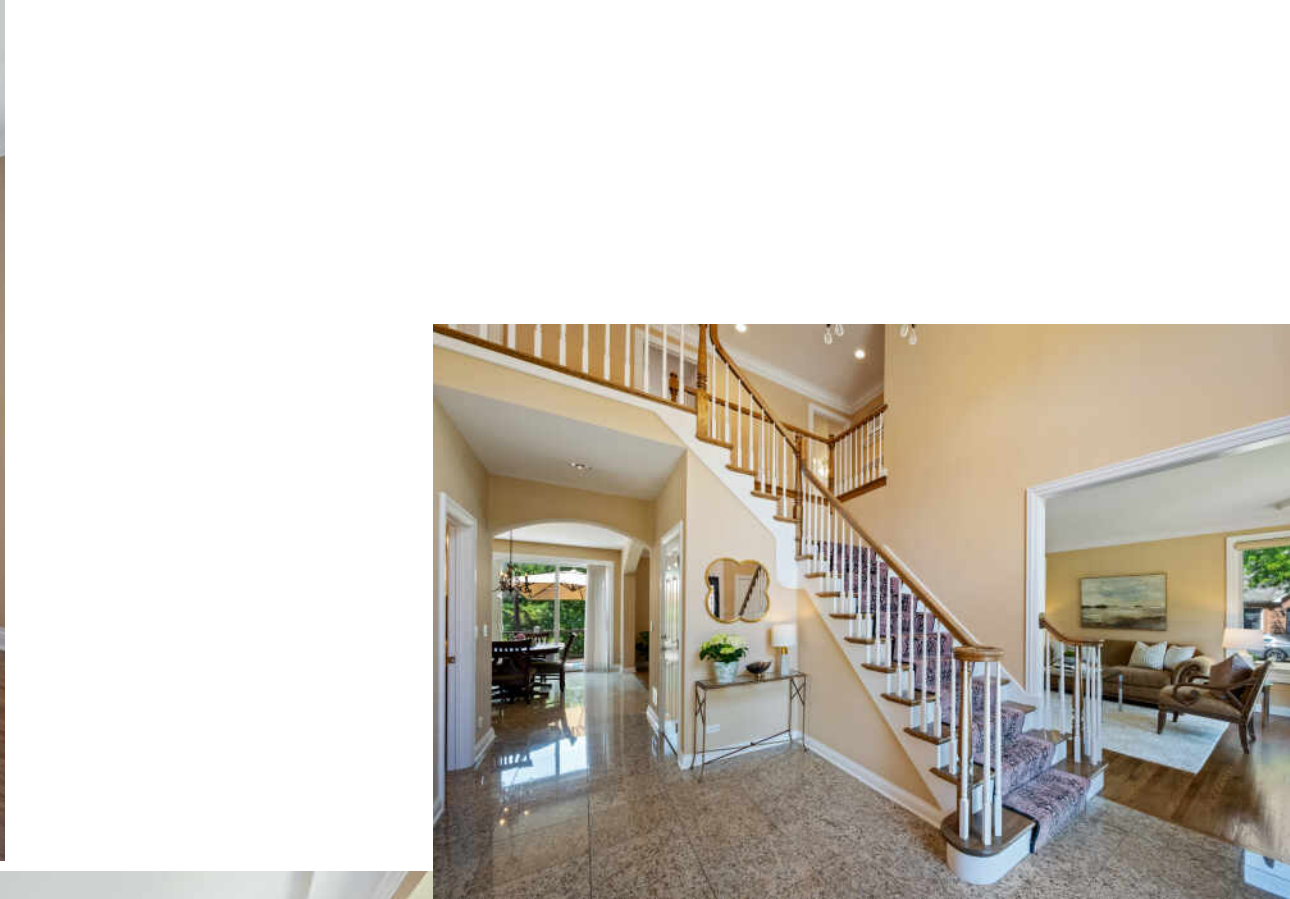
## BEAUTIFUL IN BARRINGTON!

Welcome to 1010 Oakland Drive—an exceptional custom home on a quiet cul-de-sac in Barrington's sought-after Lakeview neighborhood. Kids can walk to Lines Elementary and Station Middle School on a nearby path. This residence, meticulously maintained by the same owner for 22 years, offers a thoughtful circular floor plan that's fantastic for entertaining and everyday living. A grand two-story foyer opens to formal living and dining rooms, a spacious family room with fireplace and wet bar, and a private office. The cook's kitchen features Viking appliances, Miele coffee system, 7.5-ft island, butler's pantry, and breakfast room with access to a Trex deck overlooking the wooded yard. Upstairs, the primary suite boasts a spa bath and massive walk-in closet and three additional bedrooms, including an ensuite and two others sharing a Jack-and-Jill bath. The walk-out lower level has 9-ft ceilings, huge recreation room, fireplace, wet bar with wine fridge, flex room, full bath, and covered patio. Heated 3-car garage with new epoxy flooring, newer Andersen windows throughout, and prime location near Metra, shops, restaurants, and Barrington amenities. Once you experience the charm and camaraderie of this one-of-a-kind community, you'll wonder how you ever lived anywhere else!

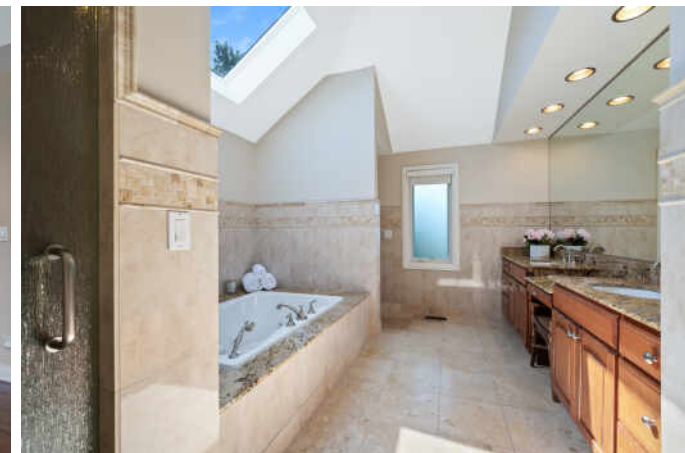
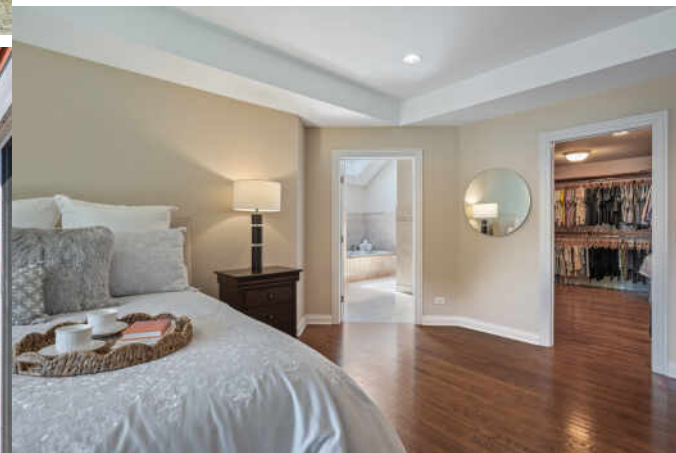
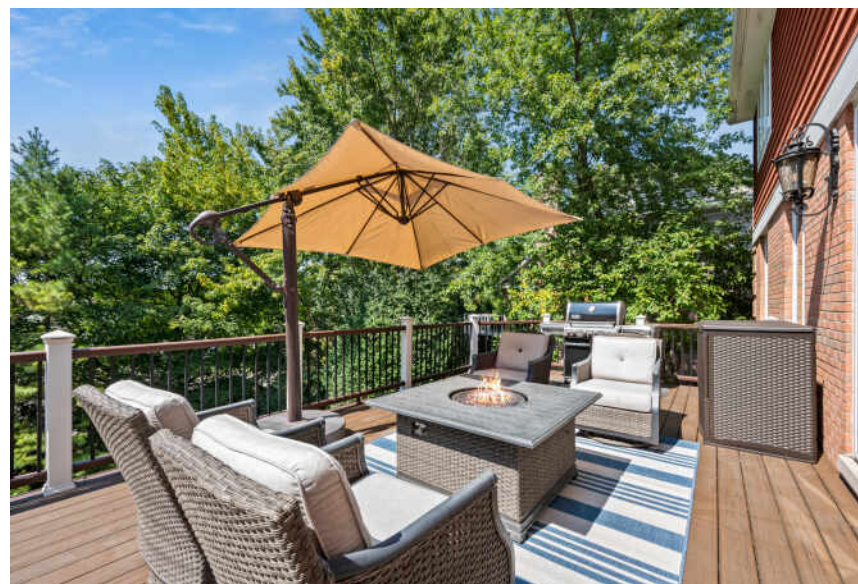




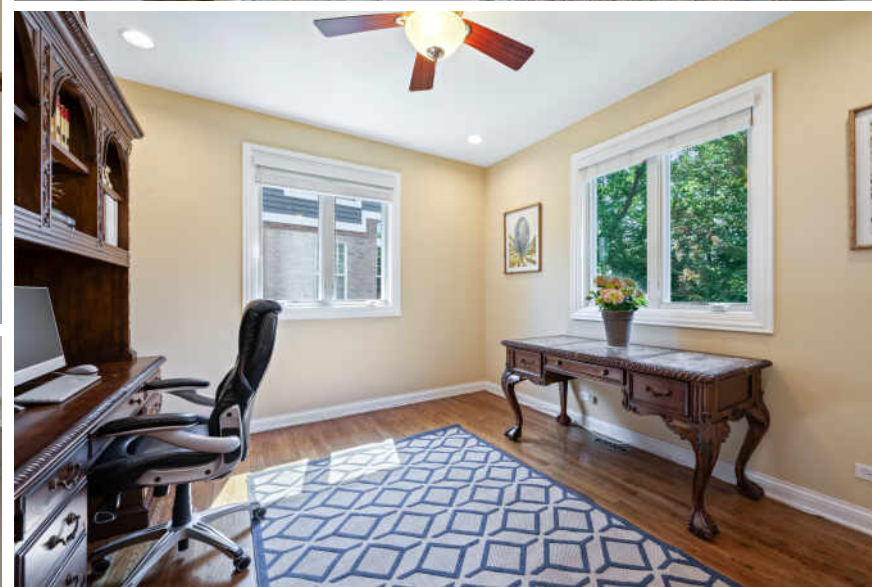
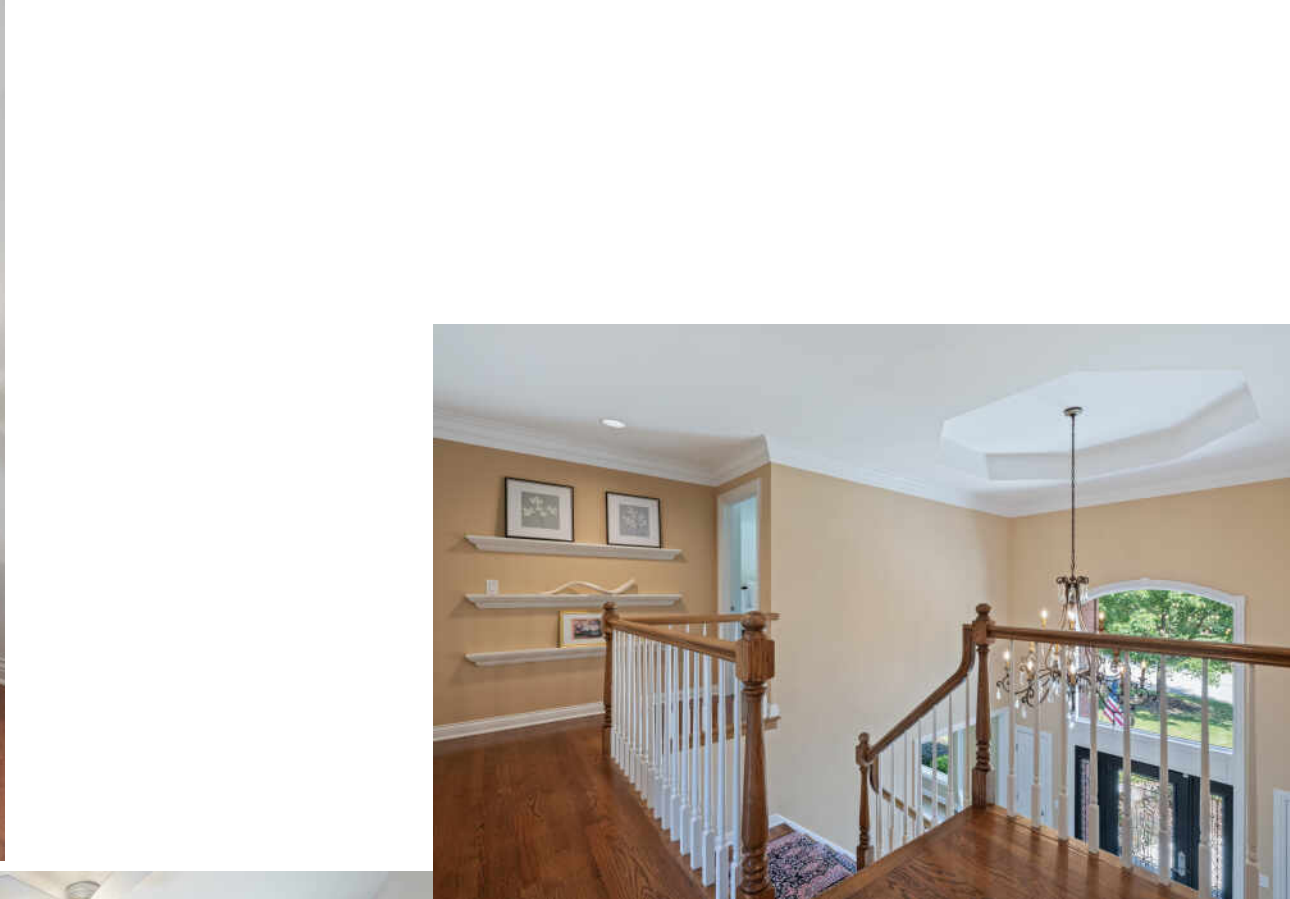
















## THE VILLAGE OF **BARRINGTON** MAY HAVE THE LARGEST RESIDENTIAL HISTORIC DISTRICT IN THE STATE, BUT IT'S DEFINITELY NOT LIVING IN THE PAST

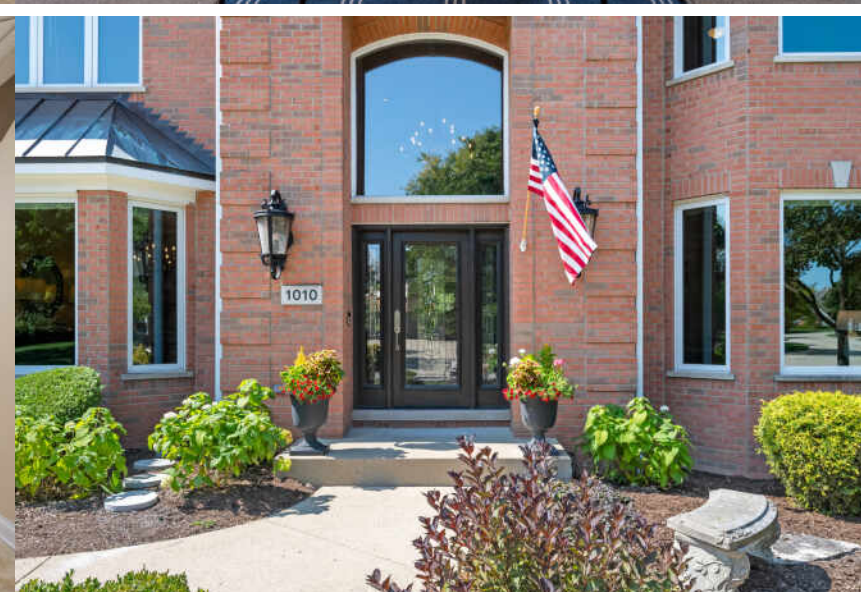
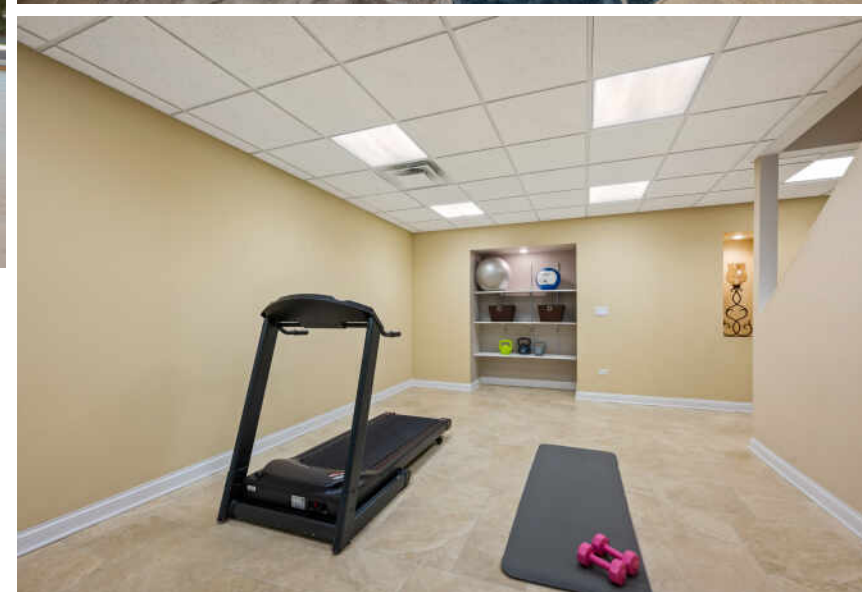
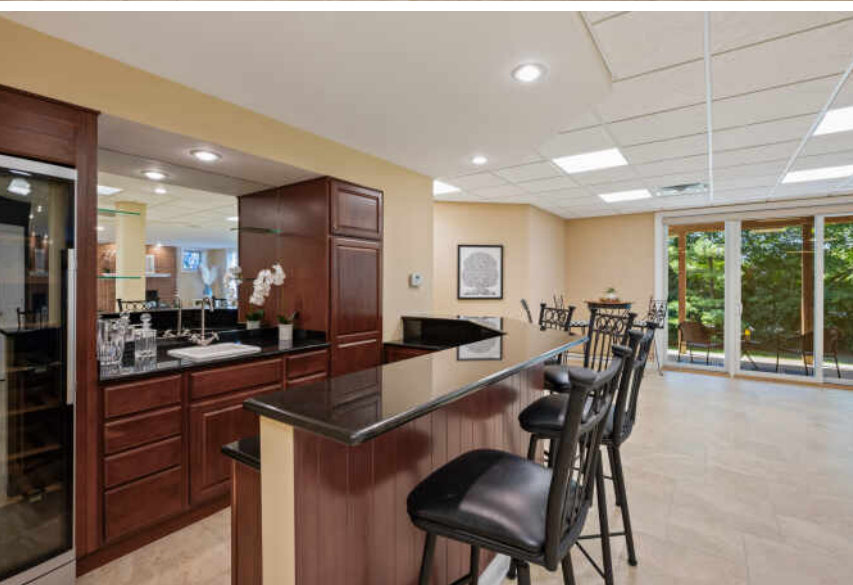
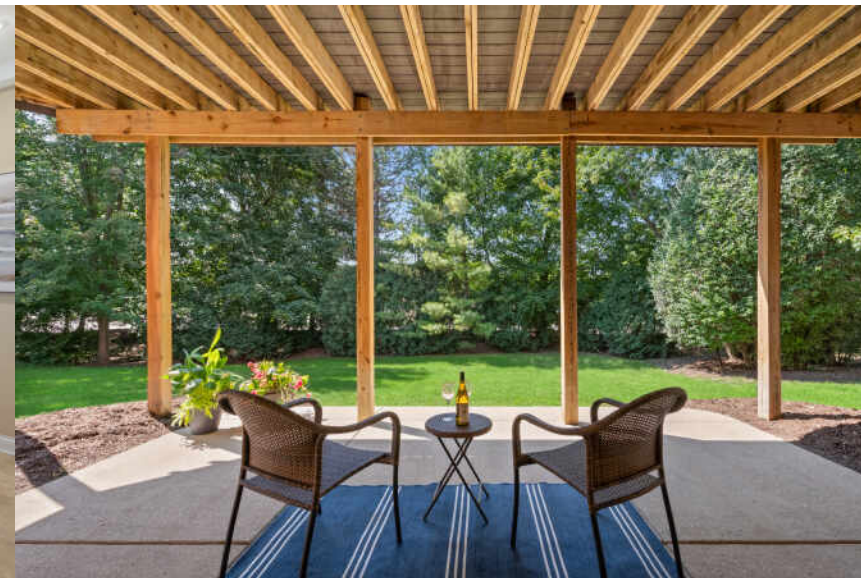
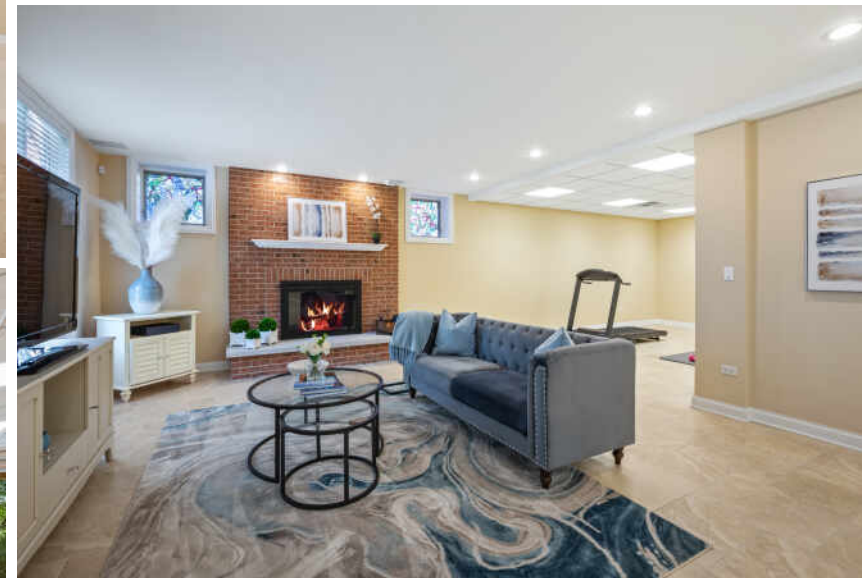
Many of the beautifully-restored Victorian, Gothic, and Queen Anne homes that line the village's main streets have been repurposed as unique shops and businesses. Meanwhile, homeowners have rehabbed and restored many historic homes back to their former glory with the addition of modern amenities. The village's historic theater opened in 1927 and still operates today.

Barrington also thrives when it comes to recreation. Citizens Park is one of the area's gems, offering wide-open spaces as well as tennis and basketball courts, cross-country ski trails, nature paths, an events pavilion, and a tree house.

The village's downtown center is filled with shoppers, diners, and residents enjoying one of the area's special events, whether it's an art festival, wine walk, or a farmers market. The nearby Barrington Metra station provides a convenient commute to downtown Chicago.

Barrington homes range from Victorians and Colonials to stunning new construction and sprawling mansions with large lots and water views.









## SUSAN SULLIVAN

LUXURY BROKER

847.910.7418

SUSANSULLIVAN@ATPROPERTIES.COM



CHRISTIE'S  
INTERNATIONAL REAL ESTATE