

1012 BONITA DRIVE
PARK RIDGE





ROOM DIMENSIONS

LIVING : 25' x 15'

DINING : 11' x 11'

KITCHEN : 20' x 11'

FOYER : 10' x 5'

FAMILY : 22' x 19'

PRIMARY : 16' x 14'

BEDROOM 2 : 14' x 11'

BEDROOM 3 : 13' x 11'

BEDROOM 4 : 19' x 12'

WORKROOM : 16' x 10'

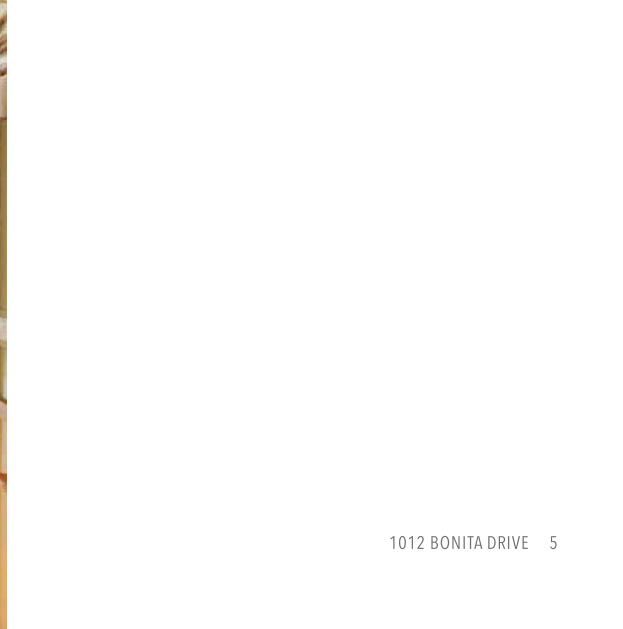
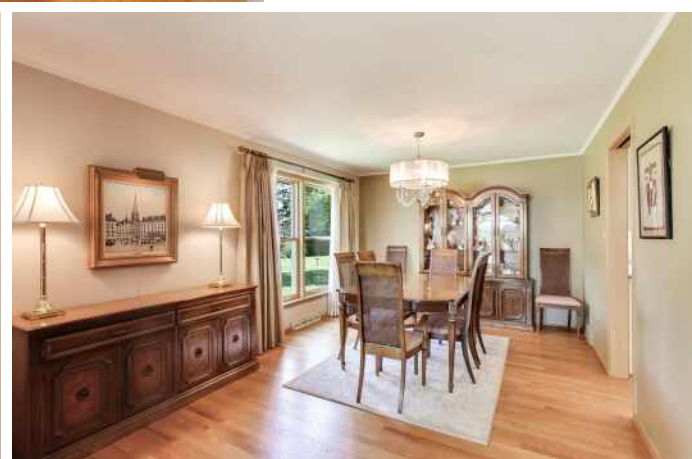
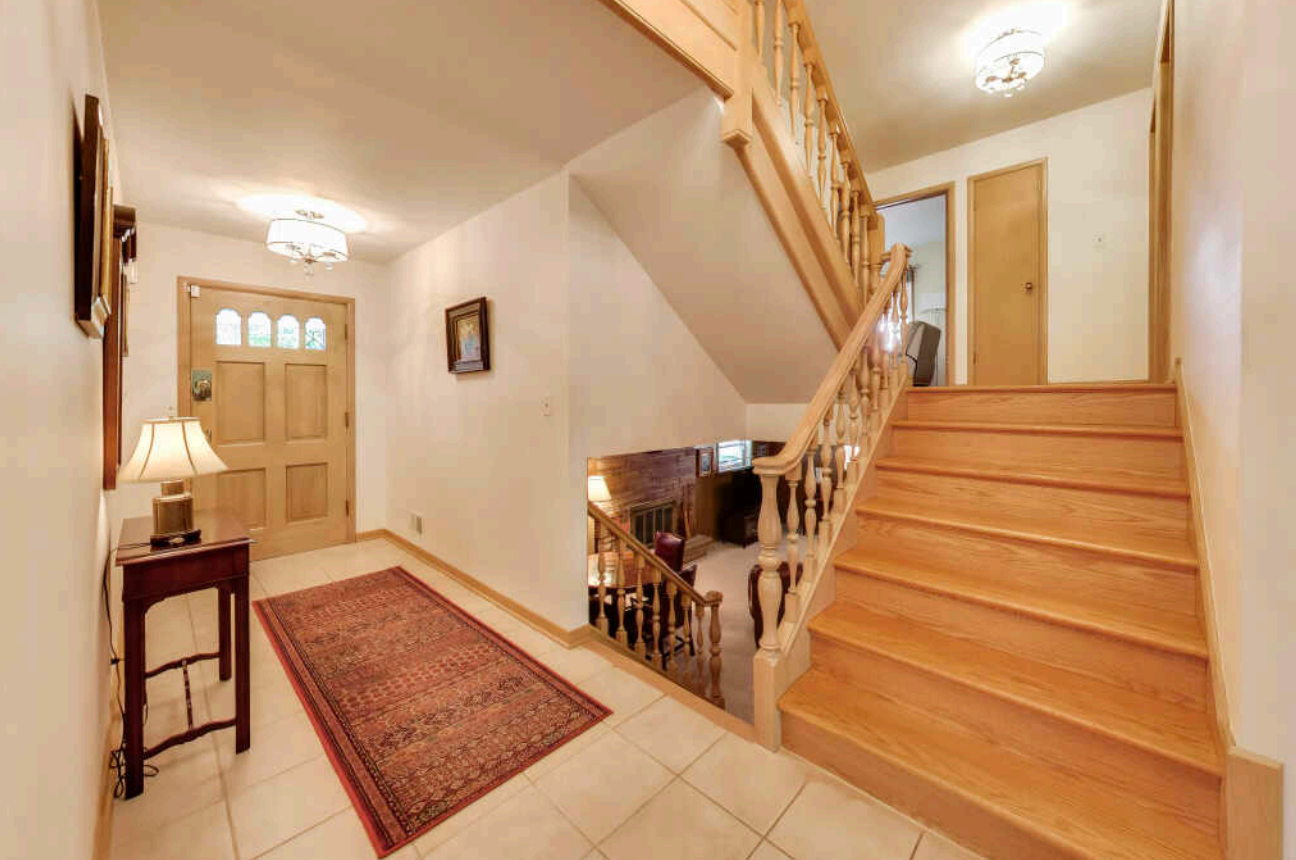
LAUNDRY : 13' x 8'

4 BEDROOM

4 BATH

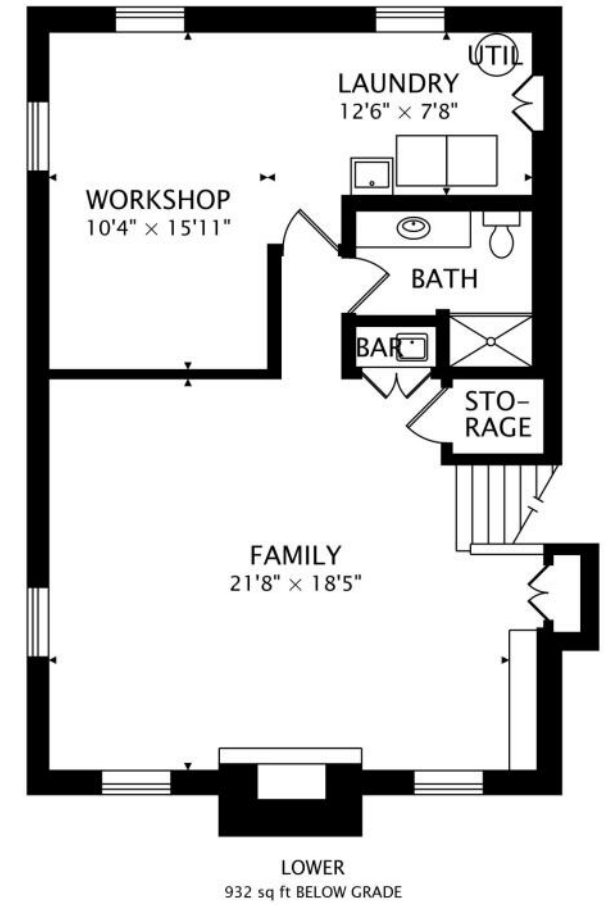
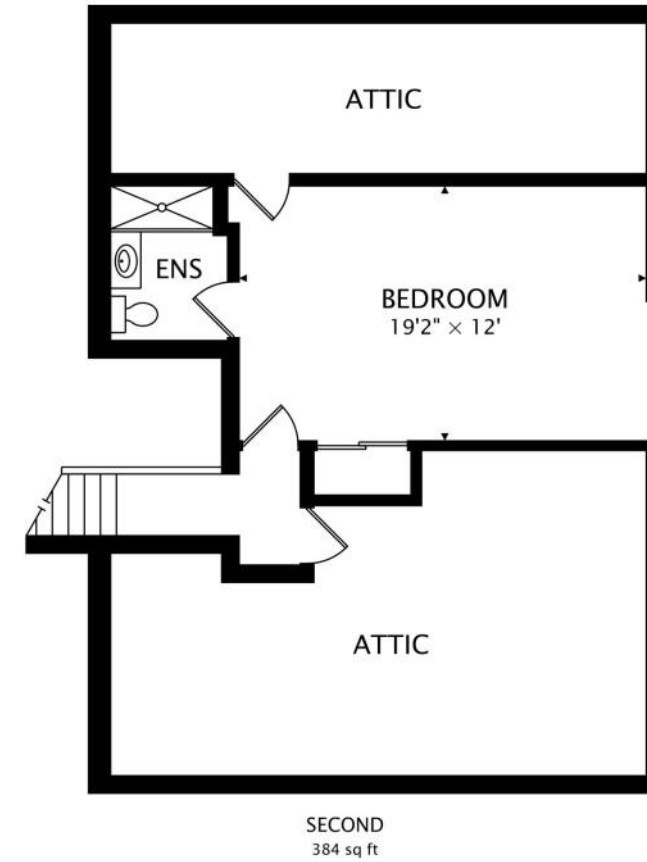
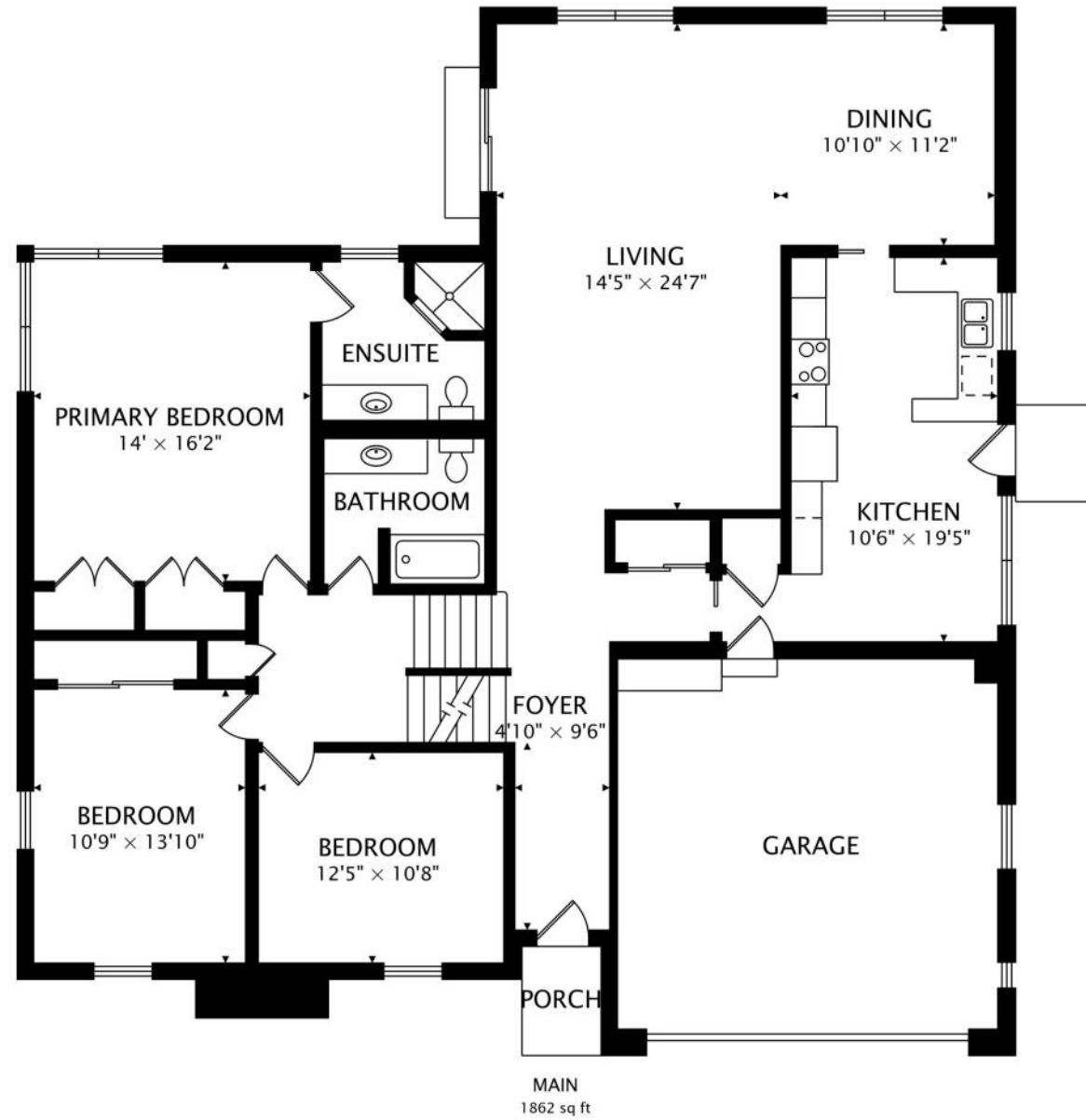
TAXES: 11,206

Tastefully remodeled and impeccably maintained, this sprawling split-level with 4 bedrooms, 4 full baths and attached garage offers exceptional space, flexibility, and comfort. A welcoming foyer opens to the sun-filled living and dining rooms overlooking the beautifully landscaped backyard. The timeless kitchen features white custom cabinetry, stainless steel appliances, and generous table space for everyday living. Gorgeous hardwood floors on the first and second floors and quality Pella wood windows throughout enhance the home. Upstairs, the spacious primary suite offers double closets and a luxurious private bath, while two additional bedrooms share a beautifully updated hall bath with a deep soaking tub. The custom staircase continues to the private third-floor retreat, complete with a fourth bedroom, remodeled ensuite bath, and abundant storage-ideal for guests, extended family, or a home office. Just a few steps down from the foyer, the inviting family room features rich paneling, a hidden wet bar, and a fireplace, creating the perfect space for entertaining. A remodeled full bath, laundry area, and workroom complete the lower level. Outside, enjoy a spacious backyard with pristine lawn, storage shed, and two impeccable brick paver patios that provide ideal spaces for both morning coffee and evening gatherings. Major updates include the roof, furnace, air conditioning, and electrical panel. Conveniently located near parks, schools, shopping, dining, and transportation. Close to Washington Elementary, Lincoln Middle School, Mary Seat, and Maine South High School. Just minutes from South Park Shopping Center, Mariano's, the CTA Blue Line, and vibrant Uptown Park Ridge with its Metra station, library, restaurants, and seasonal farmers market.











ALTHOUGH IT BORDERS CHICAGO'S NORTHWEST EDGE, **PARK RIDGE** IS A DECIDEDLY SUBURBAN COMMUNITY.

The picturesque suburb is known for its small-town charm, which is just one reason why many residents have lived here their entire lives.

Park Ridge boasts a variety of unique shops, popular restaurants, and charming parks in the city's vibrant Uptown area. Newer buildings blend seamlessly with historic ones, including the art deco Pickwick Theatre - a movie theater and venue that is on the National Register of Historic Places. The Pickwick's façade was one of the theaters used as the backdrop for the opening credits of Gene Siskel and Roger Ebert's *At the Movies*.

In addition to free summer concerts presented by the Park Ridge Fine Arts Symphony, residents have plenty of events to enjoy throughout the year. The Taste of Park Ridge takes place during the summer, and the community also has a farmers market that is open through October.

Commuters have convenient access to downtown Chicago with two commuter rail stations on Metra's Union Pacific Northwest Line, as well as access to major expressways and O'Hare International Airport.



CRAIG TINDER

PRINCIPAL BROKER

CRAIGTINDER@ATPROPERTIES.COM

TINDERHOME.COM

847-638-5522