

1016 CHERRY TREE LANE

GLENCOE





ROOM DIMENSIONS

LIVING ROOM : 23' × 16'

DINING ROOM : 13' × 11'

FAMILY ROOM : 21' × 15'

KITCHEN : 16' × 13'

PRIMARY BEDROOM : 16' × 12'

SECOND BEDROOM : 15' × 12'

THIRD BEDROOM : 13' × 11'

FOURTH BEDROOM : 12' × 10'

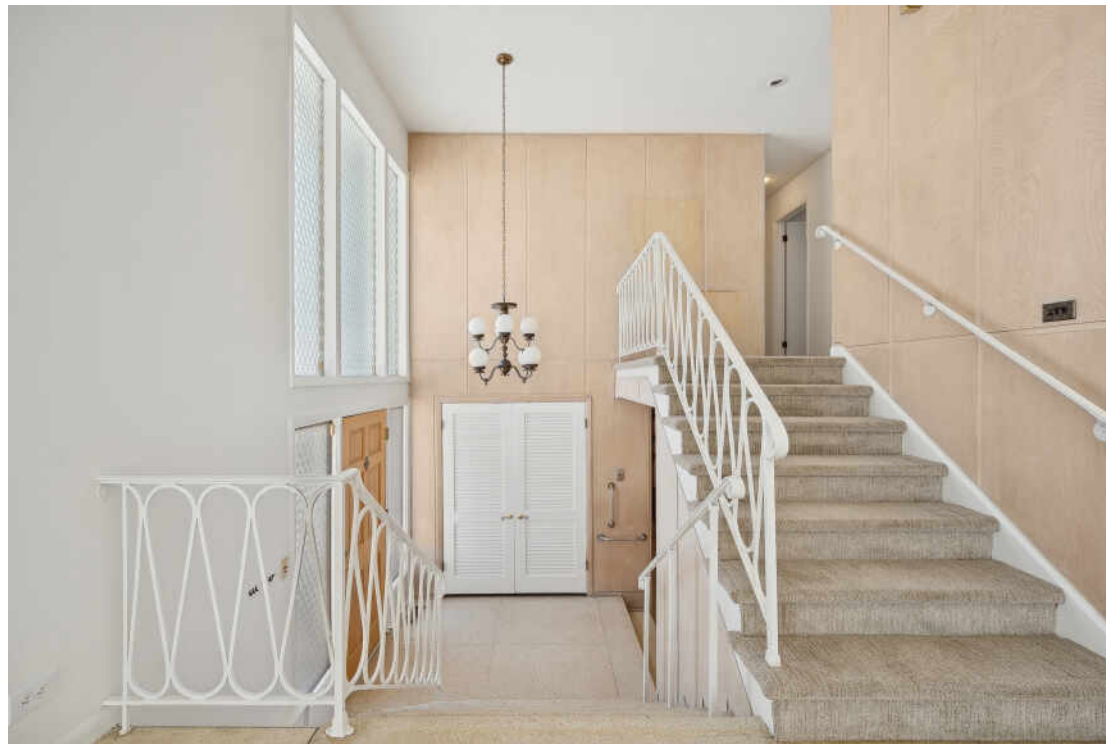
GREAT GLENCOE HOUSE

Welcome to 1016 Cherry Tree Lane, a spacious 4 bedroom, 3 bath Mid-Century home with a sub-basement, nestled in Strawberry Hill in the heart of one of Glencoe's most sought-after neighborhoods. This stunning property offers a perfect blend of classic charm, with generous living spaces, open floor plan and abundant natural light throughout. Expansive, sun-filled Living Room with vaulted ceilings opens to an L-shaped Dining Room, ideal for entertaining as well as everyday living. The Kitchen features a new stainless refrigerator, stainless Bosch dishwasher, and a separate eating area for casual dining. The large Family Room with a wood burning fireplace provides a welcoming space to relax and unwind. Upstairs, the spacious primary suite boasts a bathroom with double sinks, good closet space, and peaceful views of the beautifully landscaped yard. Additional Bedrooms are spacious, with ample closet space, ideal for family or guests. The sub-basement offers good storage space and is ready to be finished as a rec room, playroom or office. Outdoors, the beautifully landscaped private backyard is a true retreat, featuring a large patio, lush greenery, and plenty of space for outdoor gatherings. New refrigerator -2024, new tear off roof - 2023, new sump pump-2021, freshly painted. Bedroom windows have been replaced. Situated on a quiet, tree-lined street, this home is just minutes from downtown Glencoe, top-rated schools, parks, and public transportation. Don't miss this rare opportunity to own a piece of Glencoe's finest real estate and make it your own.

4 BEDROOM

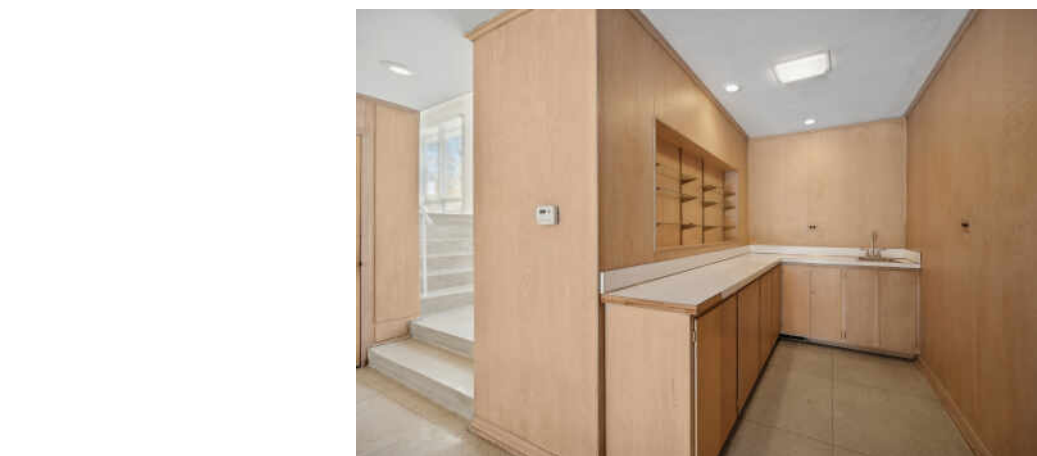
3 BATH

TAXES: \$15,536













WITH VAST STRETCHES OF RAVINES, ABUNDANT PARKS, AND A CHARMING DOWNTOWN DISTRICT, THERE ARE PLENTY OF REASONS TO APPRECIATE THE IDYLIC LAKEFRONT COMMUNITY OF **GLENCOE**.

Comprised of traditional and contemporary homes in a range of prices, Glencoe features beachfront mansions, architecturally significant mid-century modern homes, new construction, and a mix of townhomes and condominiums. The village’s downtown is in close proximity to many of Glencoe’s neighborhoods and offers an array of eateries and upscale boutiques.

During the summer, residents can play 18 holes at the community’s public golf course or take advantage of boat rentals, sailing lessons, and volleyball at Glencoe Beach. Then, of course, there are the amenities that can be enjoyed year-round, from the renowned Writers Theatre and public library to the Takiff Center, which has a gymnasium, fitness studios, conference activity rooms, and more.

Glencoe is also home to the Chicago Botanic Garden - a breathtaking attraction with gardens, special events, and horticulture classes. Additionally, a Metra station in town makes for an easy commute to the city and New Trier High School.



NOTES

[illegible]



JANIE BRESS

(847) 217-7144

JANIEBRESS@ATPROPERTIES.COM

WWW.JANIEBRESS.COM



All specifications, features, designs, price, assessments, taxes and materials are subject to change without notice. Depicted floor plans and architectural renderings are only an artist's impression.

