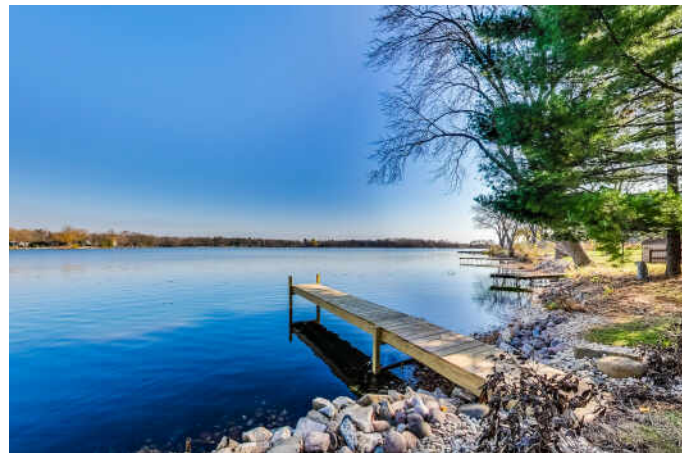


10217 195TH AVENUE
BRISTOL





ROOM DIMENSIONS

LIVING ROOM : 17' × 11'

KITCHEN : 12' × 11'

DINING ROOM : 9' × 17'

PRIMARY BEDROOM : 24' × 10'

SECOND BEDROOM : 8' × 11'

THIRD BEDROOM : 8' × 10'

FOURTH BEDROOM : 9' × 9'

FIFTH BEDROOM : 9' × 9'

SUNROOM : 25' × 7'

REC ROOM : 11' × 16'

LAUNDRY/UTILITY ROOM : 13' × 8'

5 BEDROOM

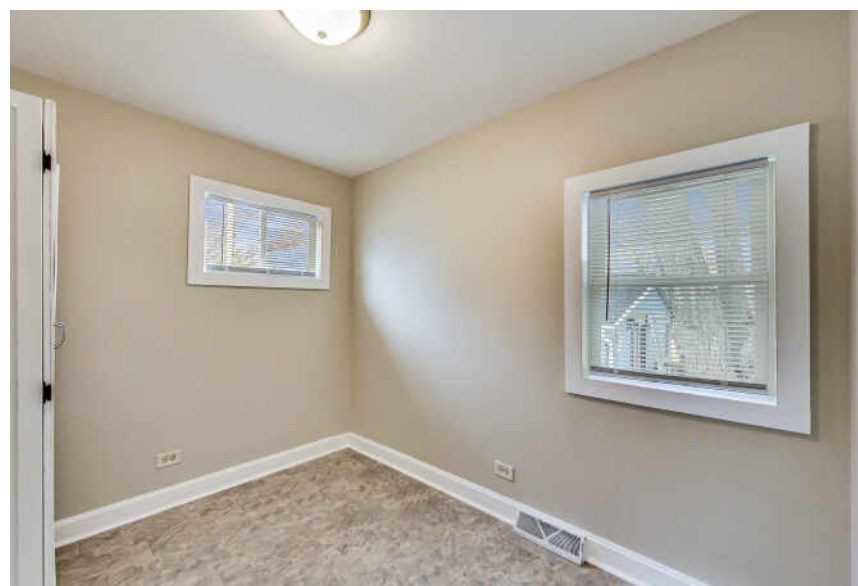
2 BATH

TAXES: \$3,749

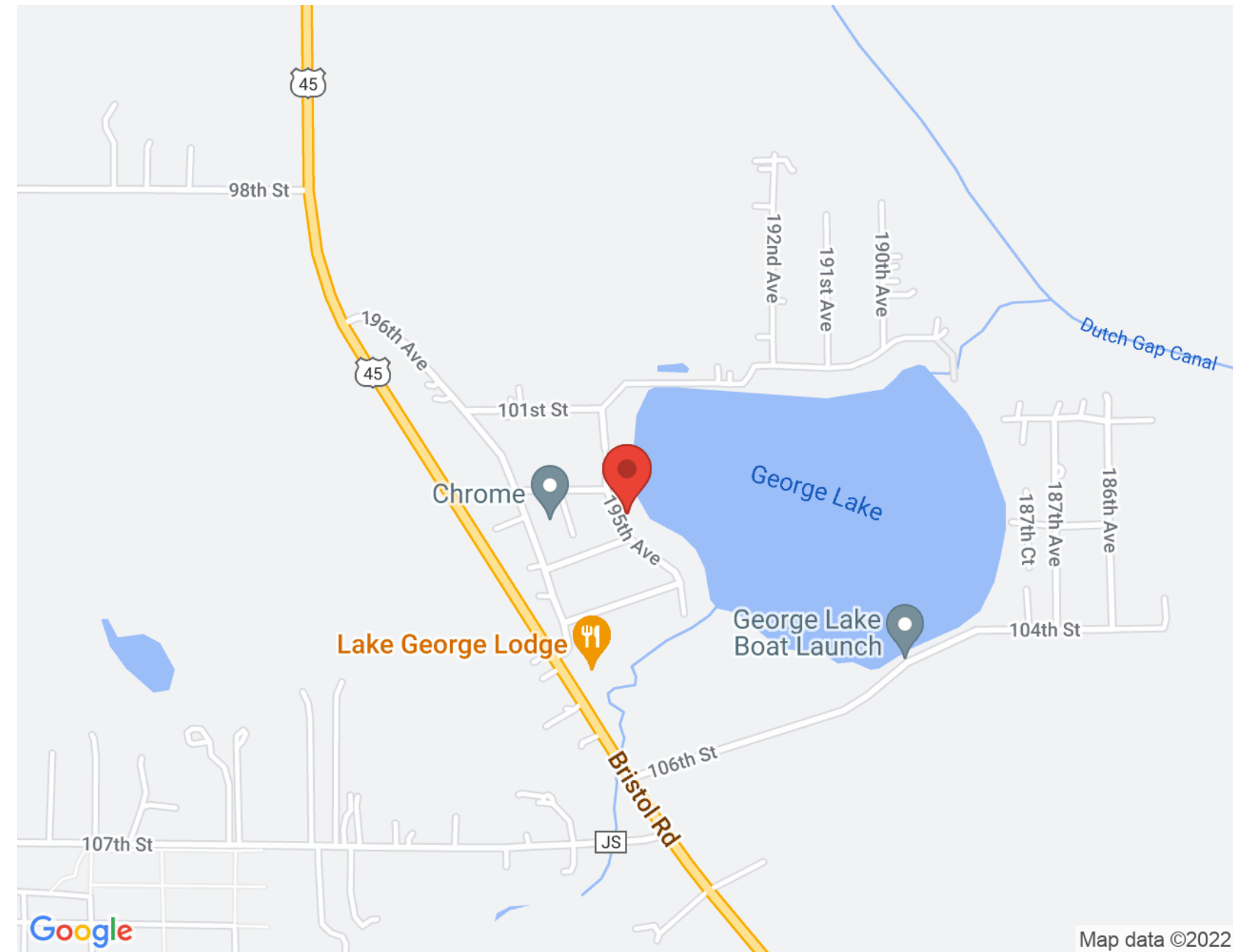
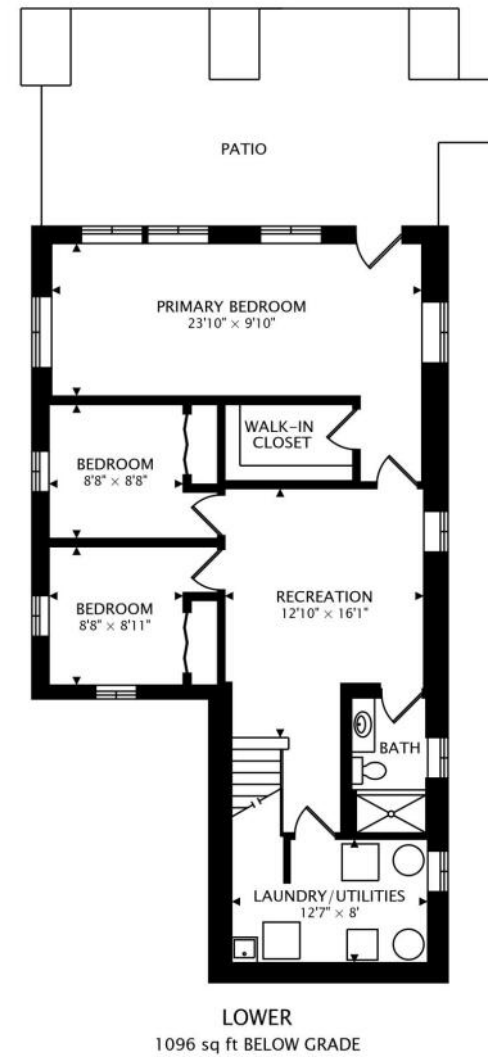
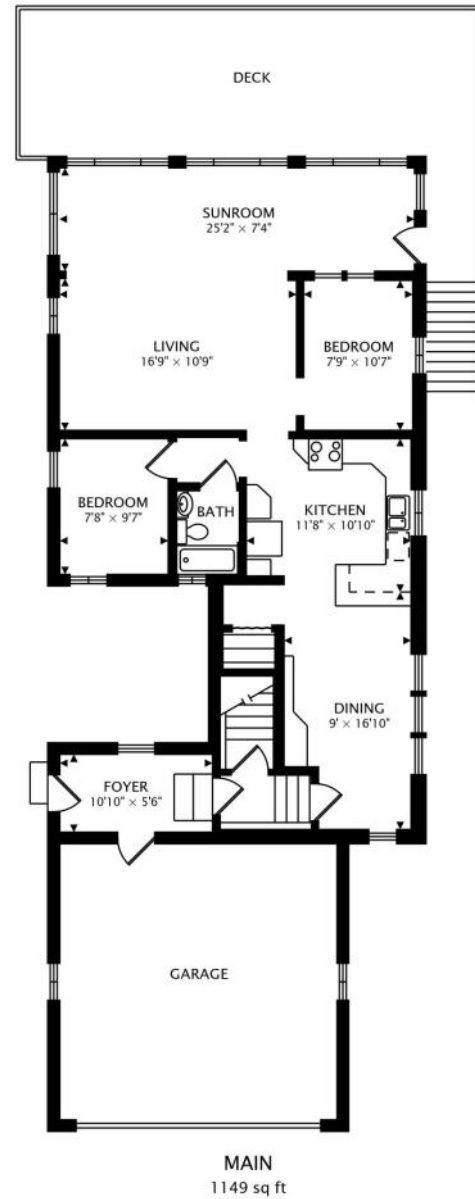
WATERFRONT HOME ON LAKE GEORGE

Welcome to Lake George in Bristol WI; a quiet, serene, 60-acre lake located just north of the Stateline. This full sports lake boasts amazing fishing with a variety of species. Main floor has large eat-in kitchen with oak cabinets and soapstone counters and 2 bedrooms plus an office that could easily be converted to a 5th bedroom. Family room is light and bright with a rustic pine accent wall overlooking an incredible view of the lake. Full walkout lower-level features 3 bedrooms, full bathroom, rec room, and laundry room. Flat and level yard will accommodate a large crowd for weekend get-togethers. 2-car attached garage and walk-in mudroom provide ample storage for all the lake toys. Recent improvements include furnace/AC, gutters/downspouts, paint, & kitchen flooring.











JAKE HANSEN

(262) 705-4907

JMHHOMES@ATPROPERTIES.COM

JMHHOMESWI.COM



SAVANNA HANSEN

(262) 705-4907

SAVHANSEN@ATPROPERTIES.COM

JMHHOMESWI.COM



CHRISTIE'S
INTERNATIONAL REAL ESTATE

LAKEGEORGEWI.INFO