



1022 SHERIDAN ROAD EVANSTON



1022 SHERIDAN ROAD • EVANSTON

@properties | CHRISTIE'S  
INTERNATIONAL REAL ESTATE

LP LUXURY  
PORTFOLIO  
INTERNATIONAL



EMILY DESTEFANO BROKER

847.921.7665 mobile  
847.763.0200 office  
emilydestefano@atproperties.com

KEY EMILY DESTEFANO  
REALTOR



1022 SHERIDAN ROAD • EVANSTON





FOYER



## 1022 SHERIDAN ROAD

### FEATURES

Combining classic elegance with modern conveniences, this South East Evanston gem is steps from Lake Michigan and Lee Street Beach making it a wonderful family home! Upon entering, you are welcomed into the gracious foyer with hardwood floors throughout and an open floor plan making this home perfect for entertaining. The living room, with one of the home's three wood burning fireplaces, has beautiful windows and French doors that lead to the outdoor porch. The dining room has a wood burning fireplace. The gourmet eat- in kitchen includes custom cabinets, Carrara marble counter tops and wet bar. Adjoining the kitchen is the family room with a built-in bookcase and a wood burning fireplace. The Second floor has a gracious primary suite with double vanity, shower and walk in closets. Three additional bedrooms, full bathroom, and laundry. Third floor has two bedrooms, office, and full bathroom. Basement is unfinished but freshly painted and with good ceiling height, laundry, loads of storage and utility room. Professionally landscaped yard includes deck, patio area, outdoor shower and fully fenced. Two car garage. This home is ideally situated, walk to train, schools, restaurants, and shops.

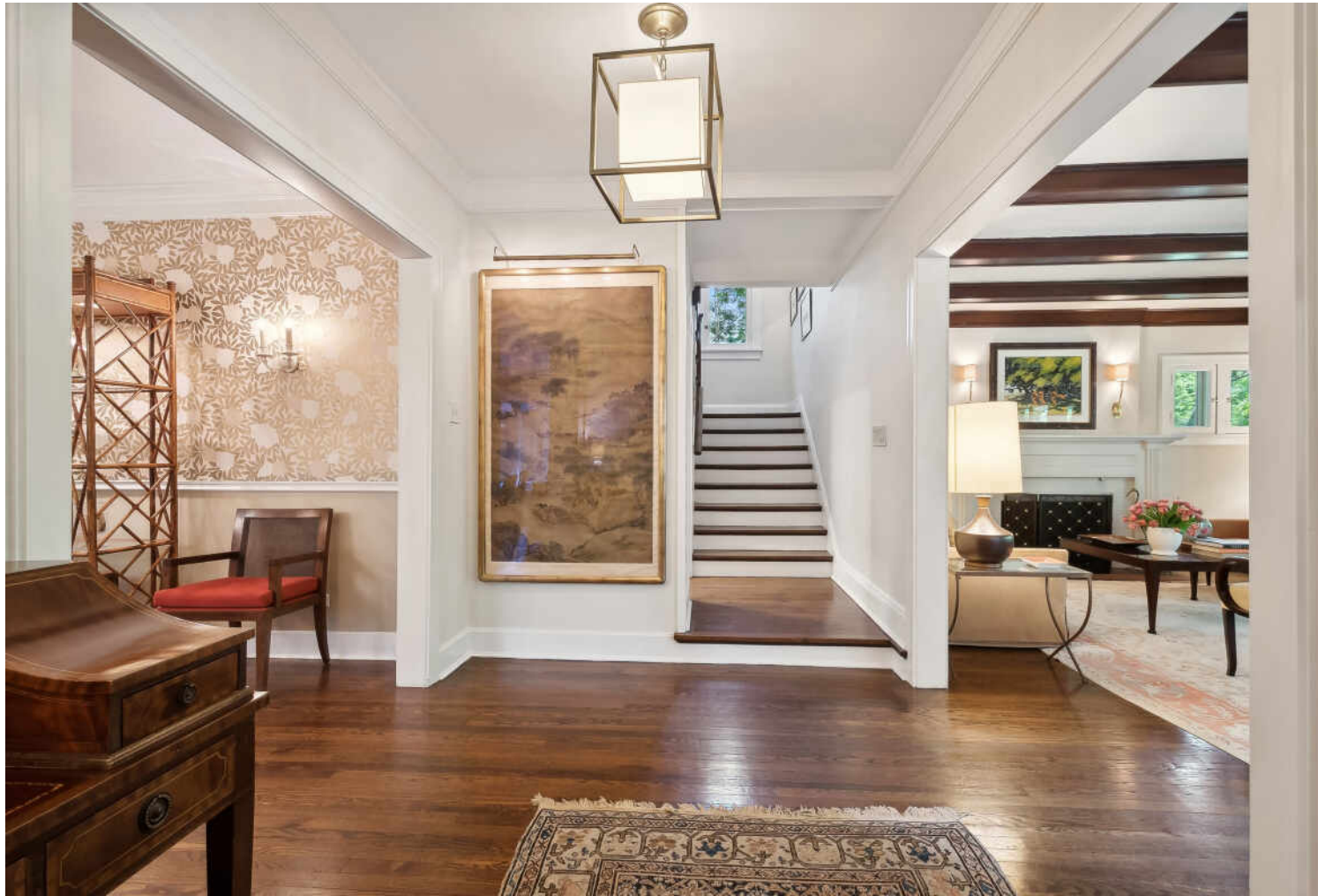


**EMILY DESTEFANO** BROKER

847.921.7665 mobile  
847.763.0200 office

[emilydestefano@atproperties.com](mailto:emilydestefano@atproperties.com)





FOYER



LIVING ROOM





LIVING ROOM



LIVING ROOM





DINING ROOM



DINING ROOM





FAMILY ROOM



BREAKFAST AREA





KITCHEN



PRIMARY BEDROOM



PRIMARY BEDROOM





2ND BEDROOM



3RD BEDROOM





4TH BEDROOM



5TH BEDROOM





6TH BEDROOM/EXERCISE ROOM



OFFICE



FRONT PORCH





BACK YARD





DECK



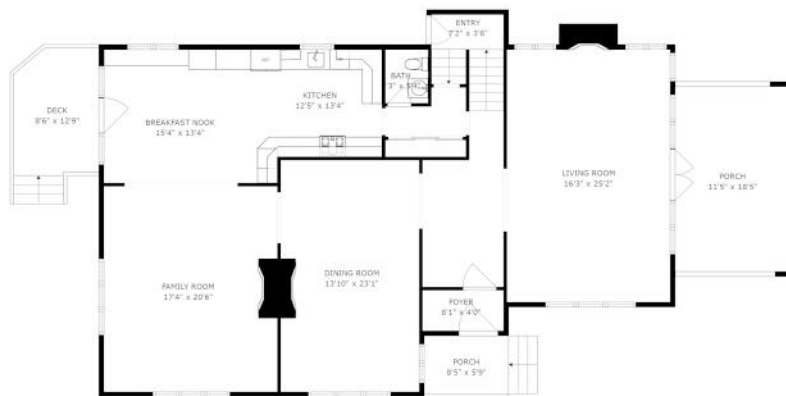
BACK YARD



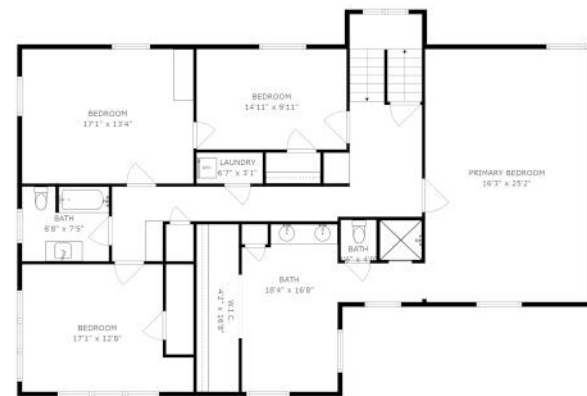




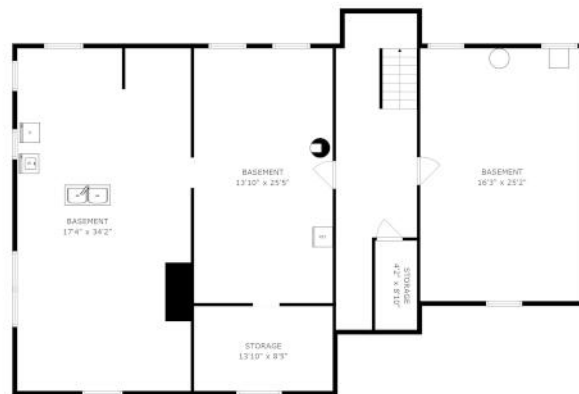
BACK YARD



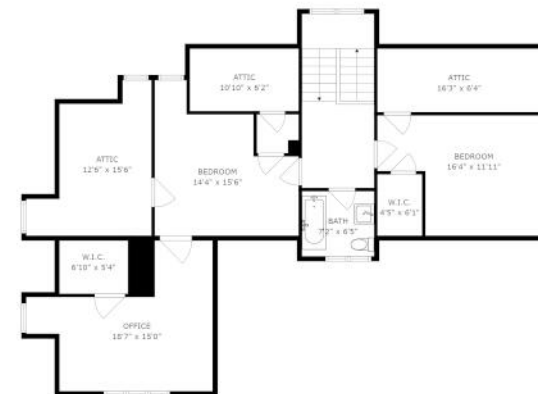
FLOOR 2



FLOOR 3



FLOOR 1



FLOOR 4

SIZES AND DIMENSIONS ARE APPROXIMATE, ACTUAL MAY VARY.



@properties® | CHRISTIE'S  
INTERNATIONAL REAL ESTATE

*Leading* REAL ESTATE  
COMPANIES  
OF THE WORLD®

LP  
LUXURY  
PORTFOLIO  
INTERNATIONAL®

