

1028 W BYRON ST #2E
WRIGLEYVILLE





ROOM DIMENSIONS

LIVING ROOM : 12' × 19'

DINING ROOM : 9' × 12'

KITCHEN : 7' × 12'

MASTER BEDROOM : 10' × 12'

SECOND BEDROOM : 11' × 13'

CHARMING, UPDATED AND SPACIOUS 2 BEDROOM CONDO WITH PARKING INCLUDED!

Prime Wrigleyville location, close to all the action, yet tucked away in a quiet and serene setting with beautifully landscaped yard/garden. Not your cookie-cutter layout. Spacious living room with woodburning fireplace with exposed white brick mantle and classic plantation shutters. Separate dining room. Granite and stainless kitchen with tons of cabinets and storage. Two bedrooms both generous in size, one with walk-in closet and attached half bath. Full bath with vanity and tub/shower. Other features include: hardwood floors throughout, in-unit laundry and abundant storage. Dedicated deck area overlooks shared back yard with picnic tables and grills. Professionally managed association. Walk to everything Wrigleyville location including Sheridan red line EL, Wrigley Field, concert venues, restaurants, night life, Kelly Playlot Park, lakefront and more!

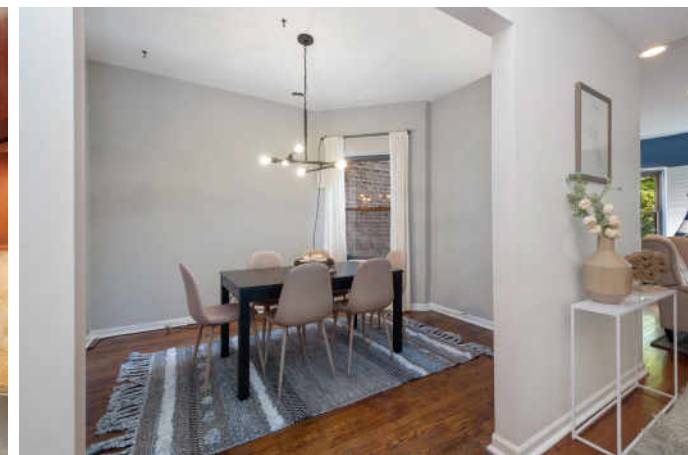


2 BEDROOM

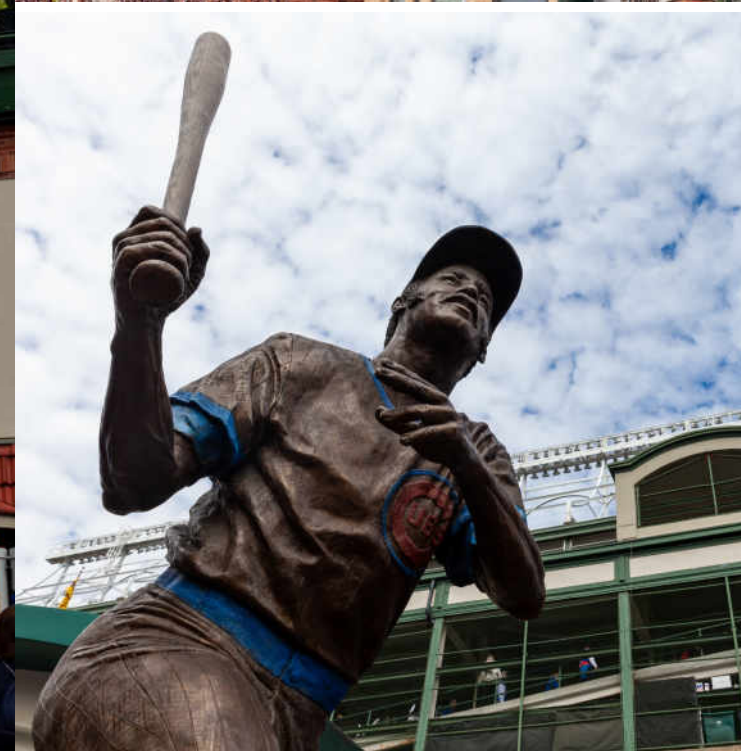
1 1/2 BATH

TAXES: \$6,166.44

ASSESSMENTS: \$356.59







WRIGLEYVILLE IS NOT ONLY A DESTINATION NEIGHBORHOOD FOR CUBS FANS, BUT ALSO FOR CHICAGOANS WHO LOVE TO LIVE IN THE CENTER OF THE ACTION.

Named after the friendly confines of Wrigley Field, the neighborhood is experiencing a major transformation following renovations to the ballpark. In addition to the ever-popular sports bars, restaurants and souvenir shops, the neighborhood boasts new upscale chef-driven restaurants and a boutique hotel.

The new Gallagher Way - Wrigleyville's town square - offers residents and visitors alike a gathering place to enjoy farmers markets, outdoor movies, ice-skating and neighborhood celebrations on days when the Cubs aren't playing.

Located in Lakeview, the neighborhood includes tree-lined streets with greystone three-flats, low-rise apartment buildings and single-family homes. The CTA's Red Line and numerous bus routes run through the area, making it easily accessible by public transit.



NOTES _____



BROOKE VANDERBOK

BROKER ASSOCIATE

CELL 773.991.4895

BROOKEV@ATPROPERTIES.COM

BROOKEVANDERBOK.COM



1028WBYRON2E.INFO