

**10299 GAST ROAD**  
BRIDGMAN





## SERENE COUNTRY LIVING JUST MINUTES FROM LAKE MICHIGAN

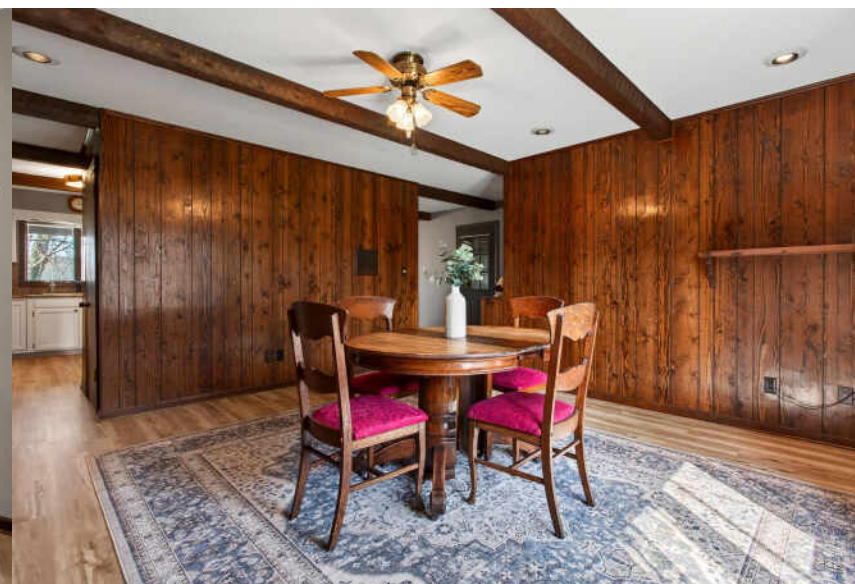
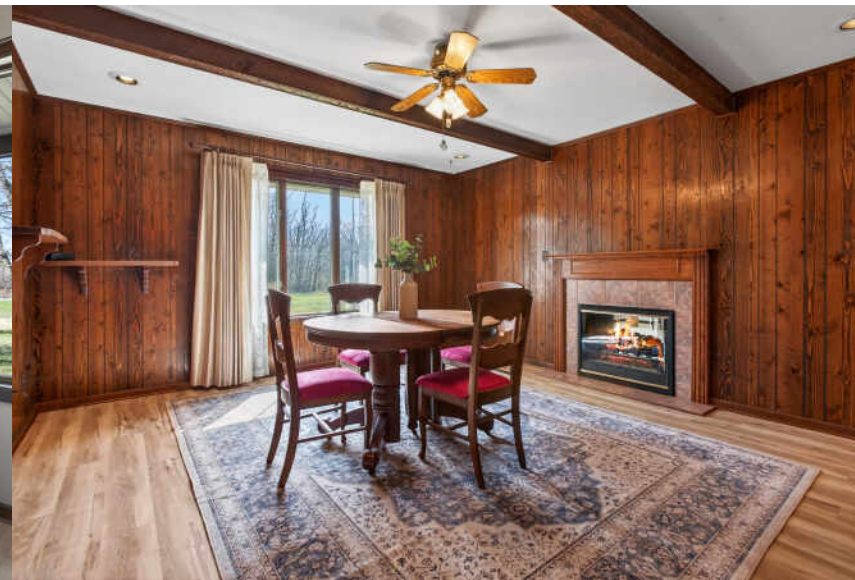
Experience tranquil living in a truly serene setting just 3 miles from Weko Beach. This rare offering features nearly 5 acres (4.96) in desirable Lake Township, providing a peaceful backdrop with plenty of room to roam. Custom built by respected builder Carol Ott, this one-owner brick ranch has been exceptionally well maintained and thoughtfully designed for comfort and functionality.

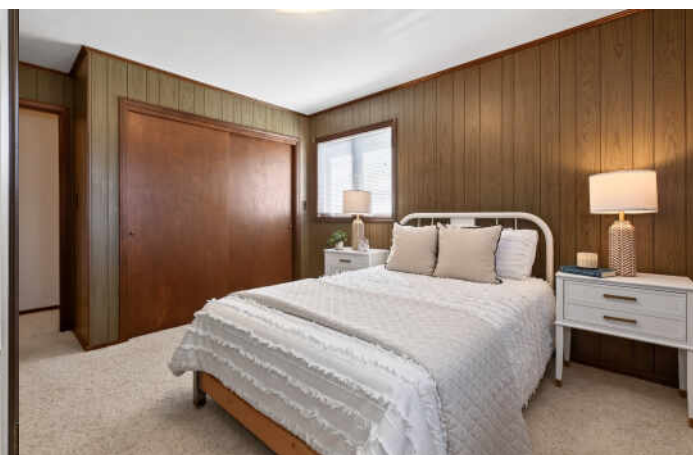
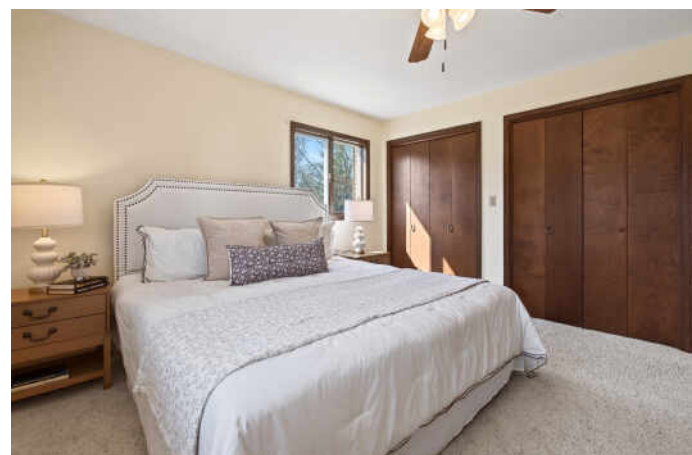
Inside, you'll find an inviting, light-filled layout with a welcoming living room featuring a gas fireplace, and a spacious kitchen complete with ample cabinetry, generous workspace, and a pantry. Expansive windows throughout the home showcase picturesque views of the surrounding property, while the large screened porch offers the perfect place to relax and unwind.

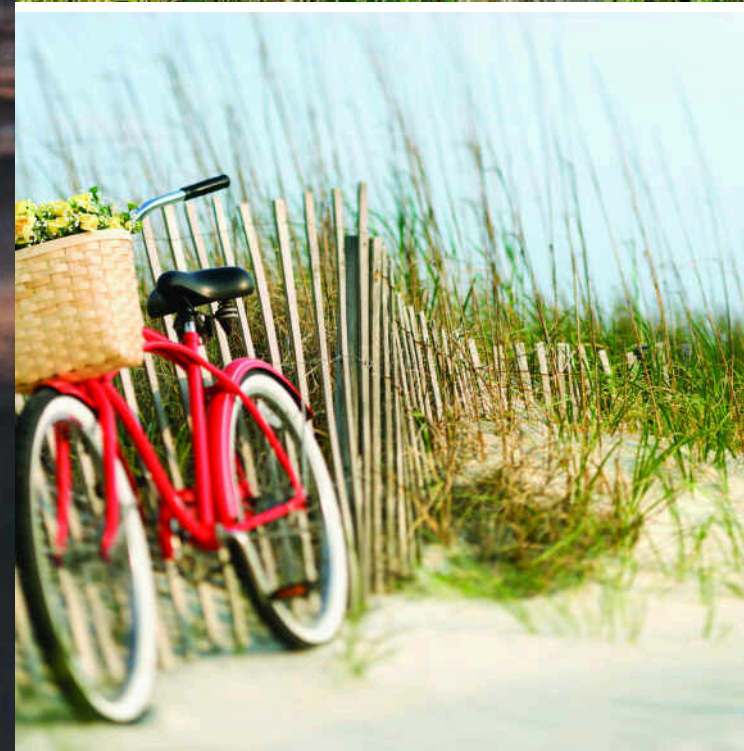
Additional highlights include a dining room with a two-way fireplace, generous bedrooms, a partially finished basement, abundant storage, and flexible living spaces ideal for both everyday living and entertaining.

Outdoors, the nearly 5-acre parcel opens the door to endless possibilities—gardening, recreation, or simply enjoying the peaceful countryside—along with a 32x24 pole barn with 100 AMP service, perfect for hobbies, storage, or workshop space.

**3 BEDROOM**  
**1.1 BATH**  
**TAXES: \$2,461**







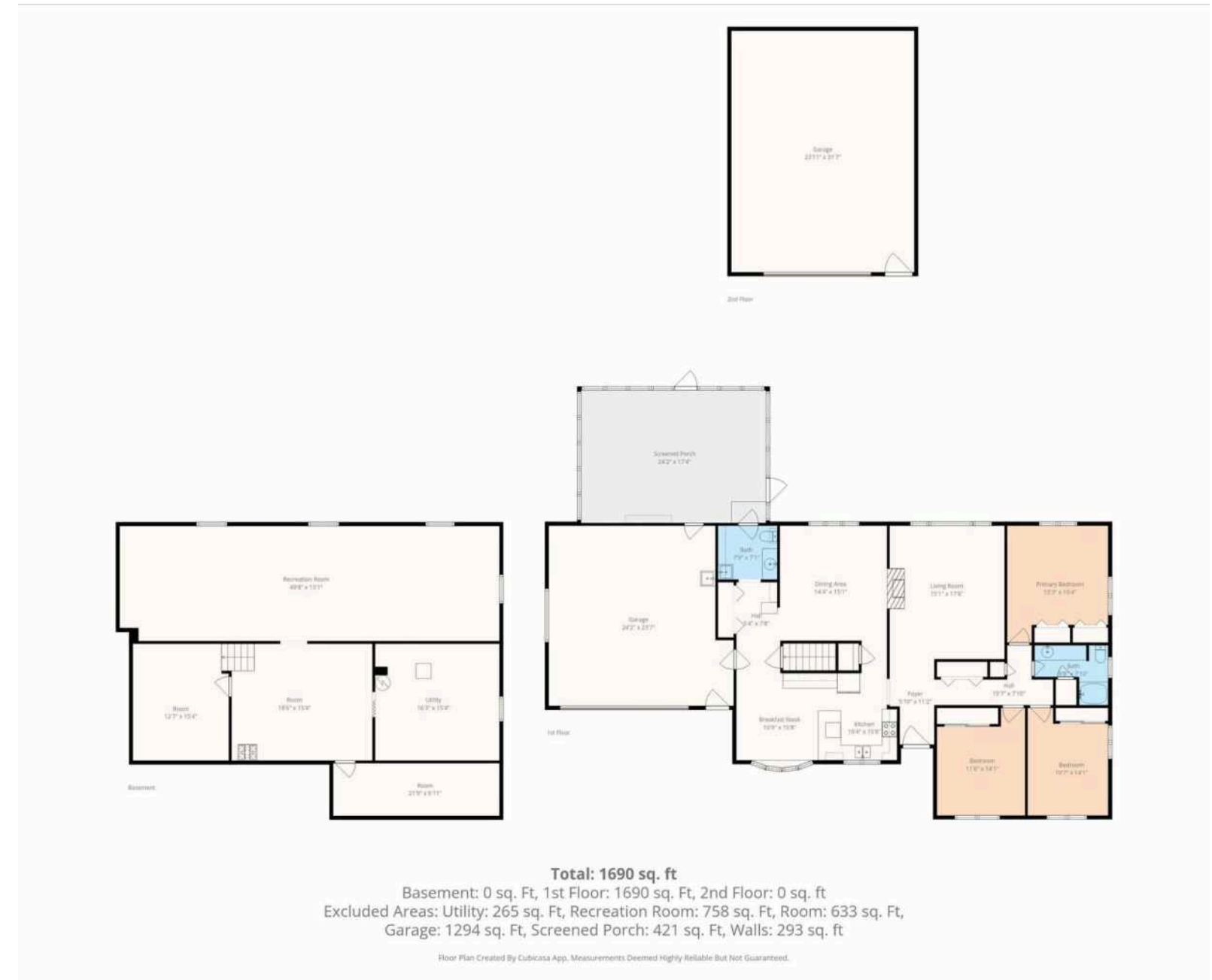
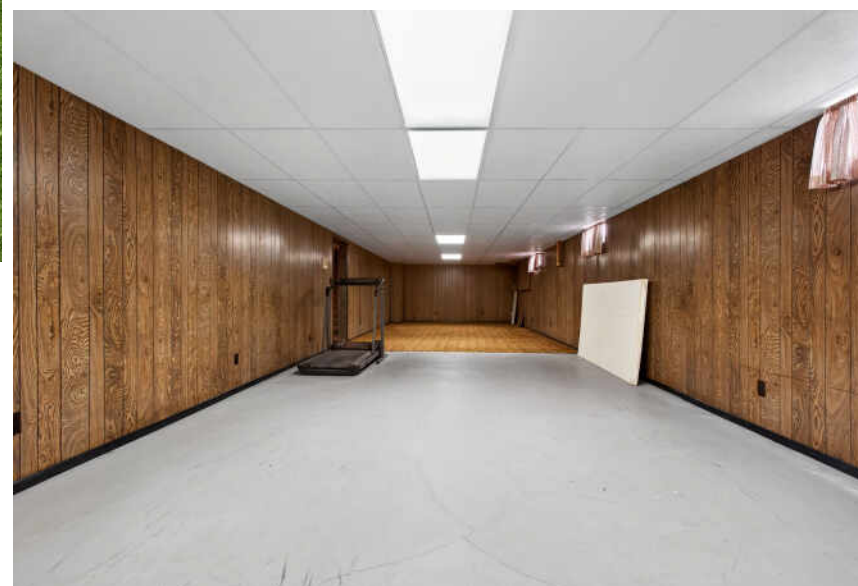
## BEACHES AND BERRIES PRACTICALLY PUT **BRIDGMAN** ON THE MAP.

In the mid-1800s, George C. Bridgman started a farm, growing berries, fruit trees, and grapes.

At the time, the market for fruit was entirely local. That changed when Bridgman granted a railroad right-of-way through his land in exchange for the establishment of a train depot. The nursery business took off when a local grower placed an ad in an East Coast farm journal and started taking orders for strawberry and cane plants. The mail-order nursery business became a million-dollar industry in the community, and wholesale nurseries continue to thrive in the area today.

The area's Weko Beach became a destination in the 1920s with a waterfront pavilion featuring dinner, dancing, and music. The city later purchased and renovated the pavilion, now known as the Beach House.

Weko Beach continues to be a popular attraction with 960 feet of shoreline and access to the Warren Dunes State Park. There are nearly three miles of beach between Weko Beach and Warren Dunes State Park for visitors to experience.





## MICHELE KAISER

269.449.0413

269.281.0392

MICHELEKAISER@ATPROPERTIES.COM

LOVE WHERE YOU LIVE