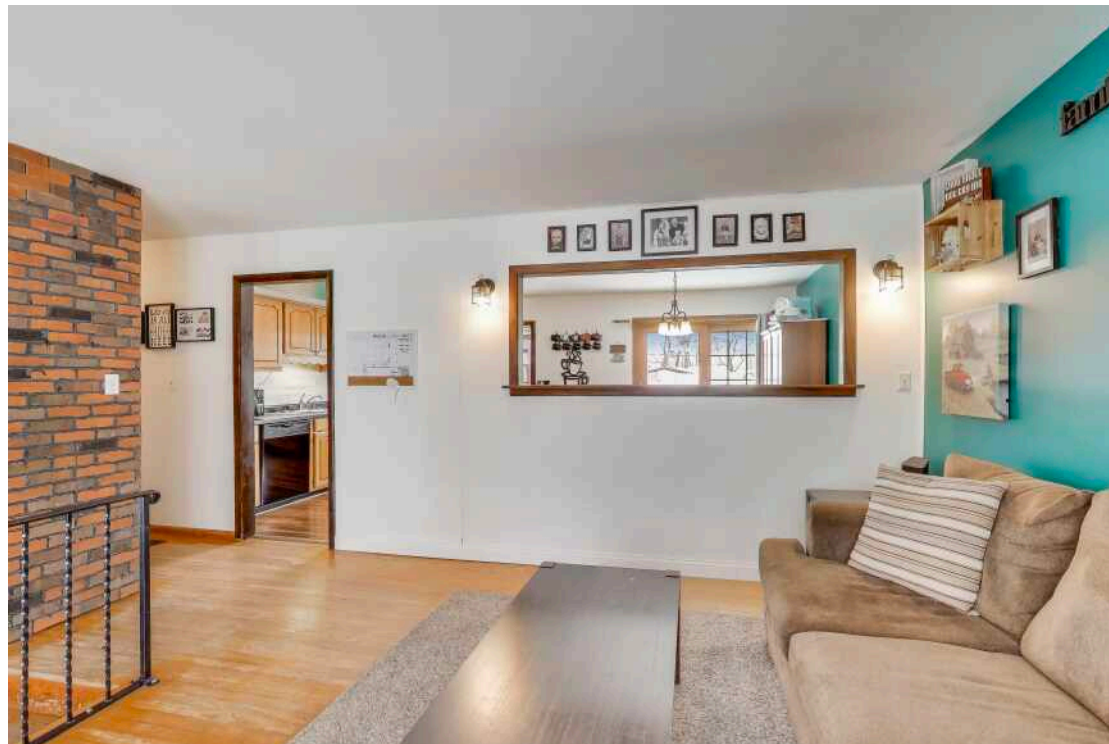


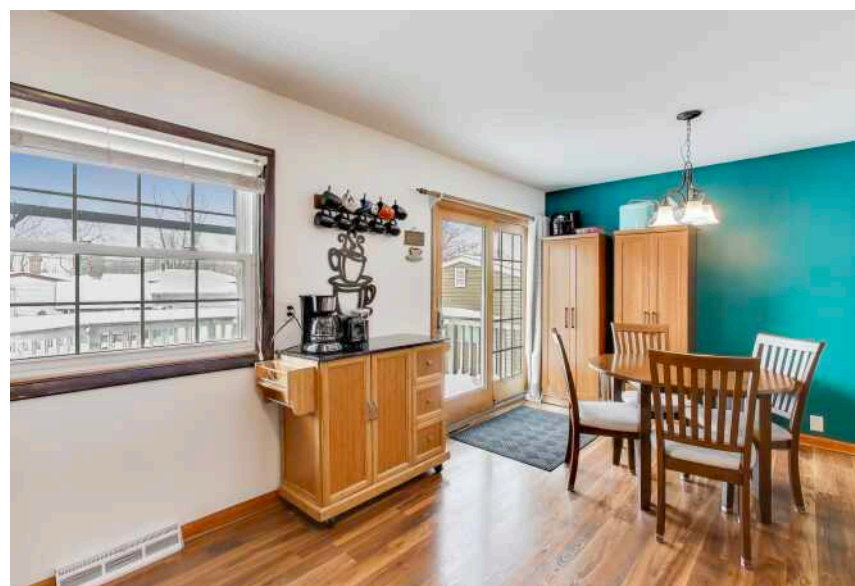
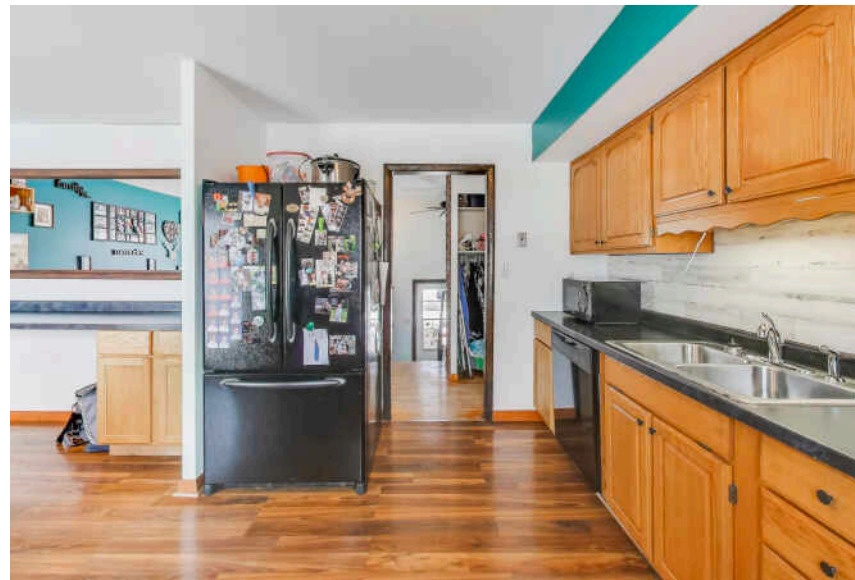
1044 N RENSSELAER STREET
GRIFFITH

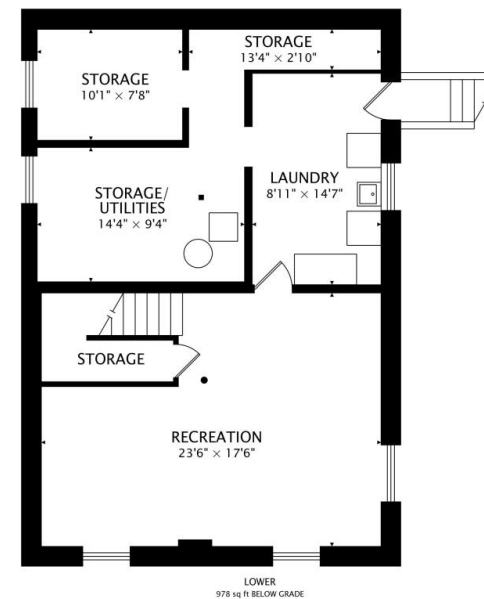
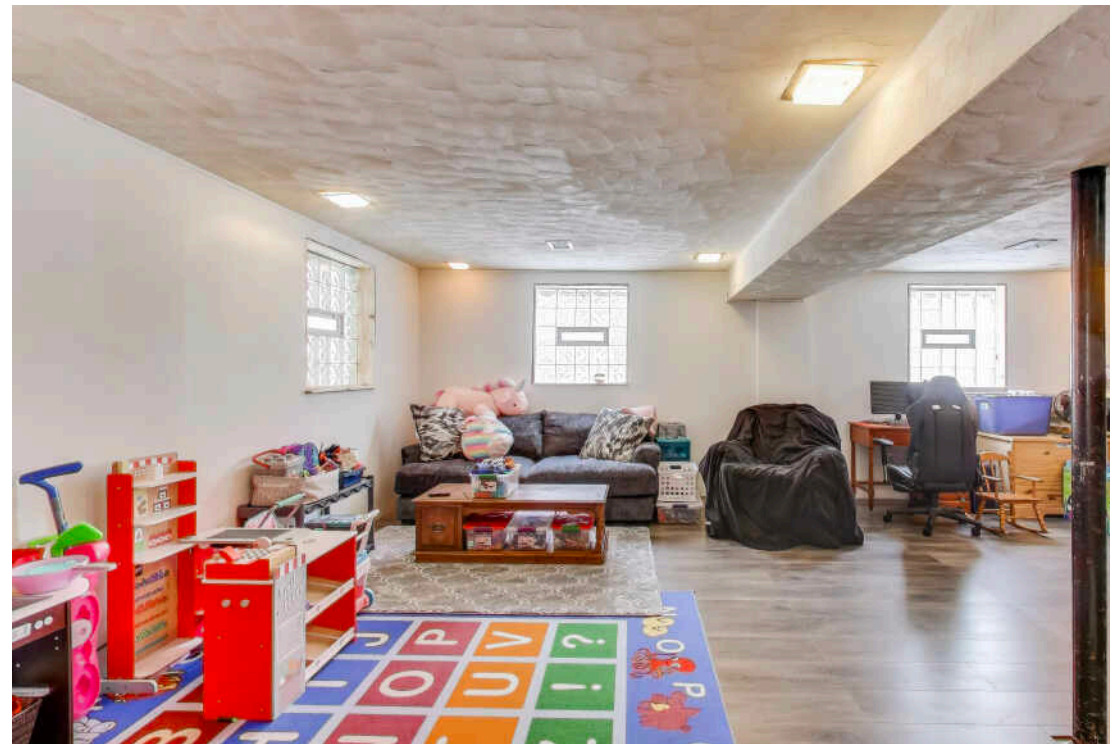
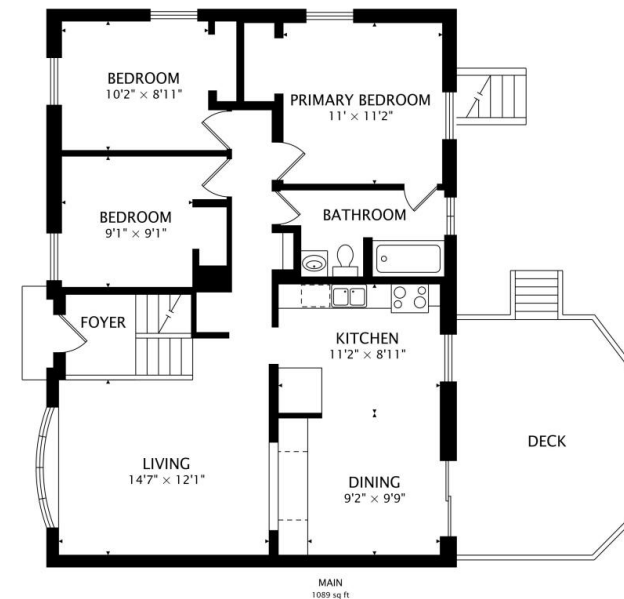




Welcome to this spacious split-level home offering over 1,900 sq ft of comfortable and functional living space. The main level features a bright, oversized living room that flows into a generous eat-in kitchen complete with ample cabinetry and all appliances included making everyday cooking and entertaining a breeze. Three nicely sized bedrooms and a full bath are conveniently situated on this level for easy living. The lower level provides even more versatility with a finished family room perfect for a cozy hangout, play area, or second living space. This level also includes a dedicated unfinished laundry area and an abundance of storage options to keep everything organized. The entire lower level has been professionally Perma-Sealed and comes with a LIFETIME transferable warranty, along with a sewer clean-out for added peace of mind and a BRAND NEW water heater. Step outside and enjoy an expansive fenced-in backyard offering endless potential for outdoor fun, gardening, or pets. A large Trex deck adds a great low-maintenance space for grilling, relaxing, or hosting gatherings. The 1.5-car detached garage provides convenient parking and even more storage space. With its generous layout, dependable updates, and outdoor space that truly enhances everyday living, this home offers a solid combination of comfort, functionality, and long-term value making it an outstanding opportunity for the next owner. Schedule your showing today!

3 BEDROOM
1 BATH
TAXES: \$2,465







WITH A BUSTLING DOWNTOWN AREA AND A VARIETY OF COMMUNITY EVENTS, **GRIFFITH** HAS EMERGED AS A POPULAR DESTINATION FOR NORTHWEST INDIANA HOMEBUYERS.

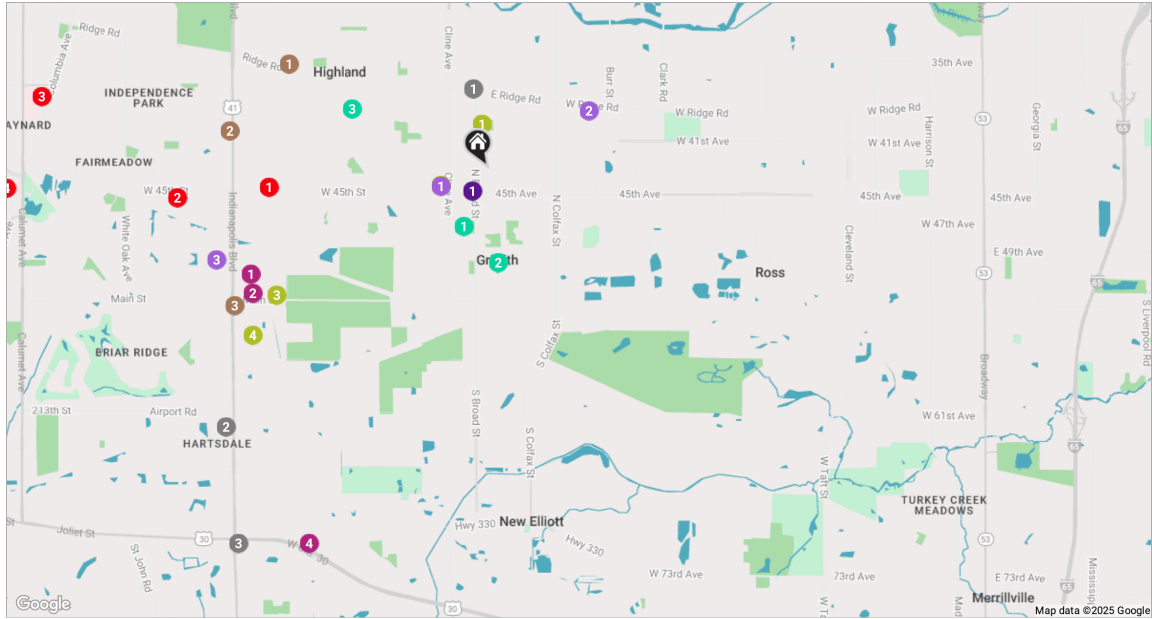
Downtown Griffith features an eclectic mix of independent businesses from local entrepreneurs, ranging from craft breweries and gourmet restaurants to record stores and specialty shops.

Among the community's annual events and celebrations are a town-wide yard sale and an Independence Day Parade. Central Park is home to other noteworthy happenings including Oktoberfest and the annual Griffith Central Market, which features a beer garden, artisan foods, food trucks, and live performances.

Speaking of music, Griffith's Rock 'N' Rail Music and Street Festival spans several days and offers live entertainment and a vintage car and motorcycle show. Likewise, the three-day Broad Street Blues and BBQ Festival features blues artists, a firework show, and more. Symphony in the Park takes place the first Saturday of August and showcases the Northwest Indiana Symphony Orchestra for an evening of music under the stars.

Nicknamed "The Town That Came to the Tracks," Griffith boasts a rich history in the railroad industry. Several unused tracks have been converted for recreational use, including the 17.7-mile Erie Lackawanna Trail.

Amtrak riders will find the closest station in Whiting, while Chicago commuters can pick up the South Shore Line in East Chicago or Gary.



RESTAURANTS

- 1 Subway
100 WEST RIDGE ROAD SUITE 100,
0.8 MI
- 2 Golden Corral Buffet & Grill
915 EAGLE RIDGE DRIVE, 3.4 MI
- 3 Teibel's Family Restaurant
1775 U.S. 41, 4.2 MI
- 4 Subway
1503 81ST AVENUE, 6.1 MI
- 5 Asparagus
7876 BROADWAY, 6.4 MI

COFFEE

- 1 Sip Coffee House highland
2815 JEWETT AVENUE, 2.1 MI
- 2 Dunkin'
9228 INDIANAPOLIS BOULEVARD,
2.4 MI
- 3 Starbucks
45 US HIGHWAY 41 MAIN STREET
CENTER, 2.7 MI

SHOPPING

- 1 Ulta Beauty
10333 INDIANAPOLIS BOULEVARD,
2.4 MI
- 2 Target
10451 INDIANAPOLIS BOULEVARD,
2.5 MI
- 3 Cabela's
7700 CABELA DRIVE, 3.7 MI
- 4 The UPS Store
228 WEST LINCOLN HIGHWAY, 3.9 MI
- 5 Walgreens
2500 RICHARD GORDON HATCHER
BOULEVARD, 4.2 MI
- 6 Costco Optical Department
1310 EAST 79TH AVENUE, 7.0 MI
- 7 Best Buy
2490 EAST 79TH AVENUE, 7.7 MI

GROCERY

- 1 Strack & Van Til
9632 NORTH CLINE AVENUE, 0.5 MI

ALDI

- 2 ALDI
5995 WEST RIDGE ROAD, 1.1 MI

MEIJER

- 3 Meijer
10138 INDIANAPOLIS BOULEVARD,
2.7 MI

GYM

- 1 Griffith Family YMCA
1345 NORTH BROAD STREET, 0.4 MI
- 2 Anytime Fitness
9632 NORTH CLINE AVENUE, 0.5 MI
- 3 Heavy Metal Fitness
2715 MAIN STREET H, 2.3 MI
- 4 Schererville Family YMCA
221 U.S. 41 A, 2.7 MI

MEDICAL

- 1 Columbia Medical Center
9696 GORDON DRIVE, 2.0 MI

Medical Specialists Centers of Indiana

- 2 Medical Specialists Centers of Indiana
1950 45TH STREET #201, 2.9 MI
- 3 Community Hospital
901 MACARTHUR BOULEVARD, 4.2 MI
- 4 Franciscan Health Munster
701 SUPERIOR AVENUE, 4.5 MI

PARKS

- 1 Central Park
600 NORTH BROAD STREET, 0.6 MI
- 2 Griffith Park Department
349 NORTH INDIANA STREET, 0.9 MI
- 3 Pettit Park
9040 COTTAGE GROVE AVENUE, 1.4 MI

SERVICES

- 1 United States Postal Service
900 NORTH BROAD STREET, 0.3 MI





CRYSTAL HEADY

C: 630.205.0389

O: 219.440.0070

CRYSTALHEADY@ATPROPERTIES.COM

HEADY-REALESTATE.COM



All specifications, features, designs, price, assessments, taxes and materials are subject to change without notice. Depicted floor plans and architectural renderings are only an artist's impression.

