

10497 CALIFORNIA ROAD
BRIDGMAN



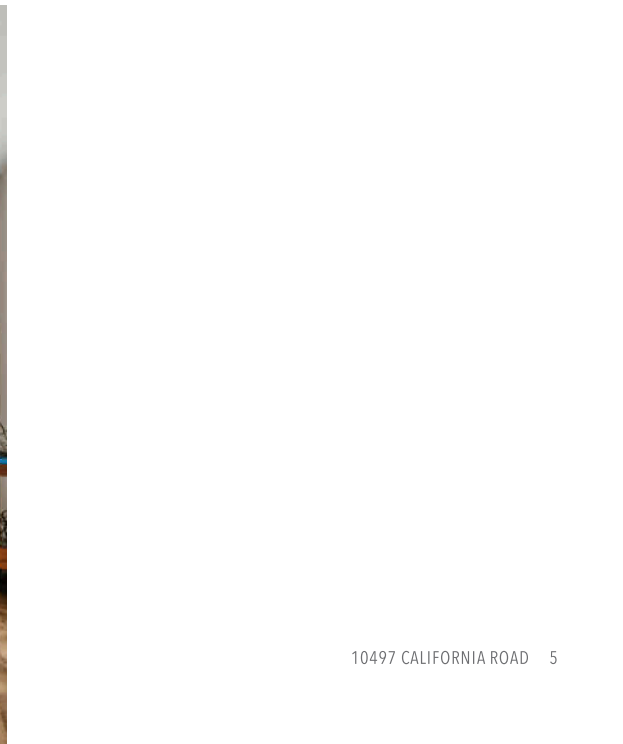
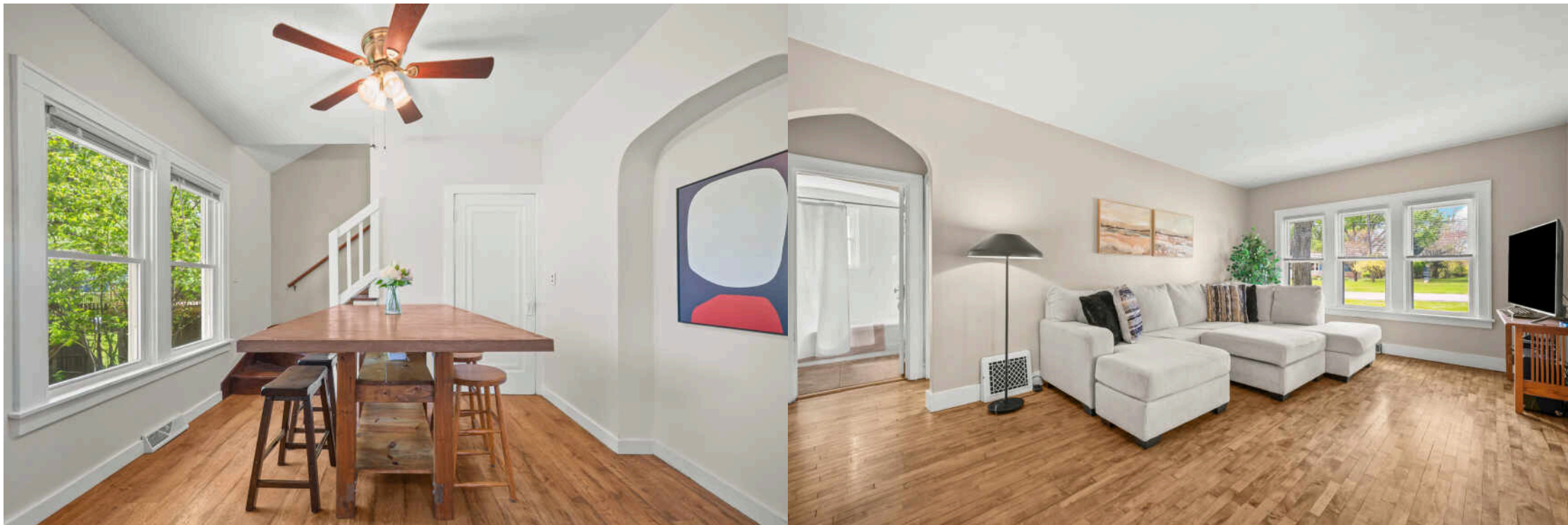
@properties®

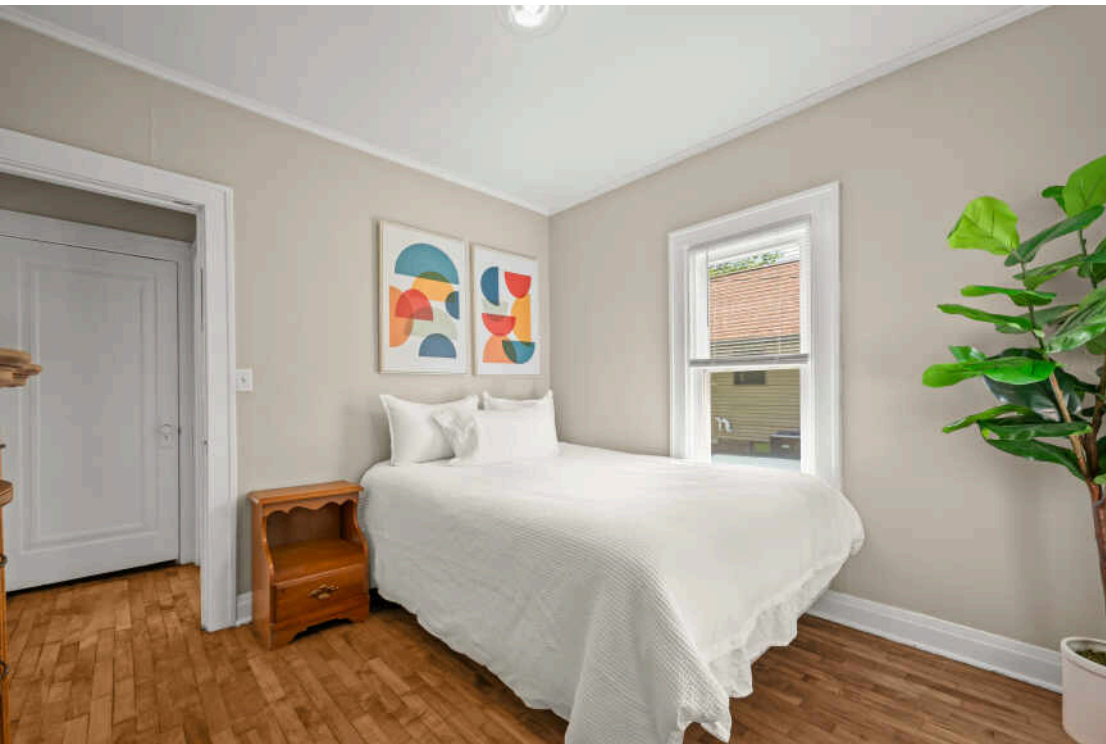
CHRISTIE'S
INTERNATIONAL REAL ESTATE

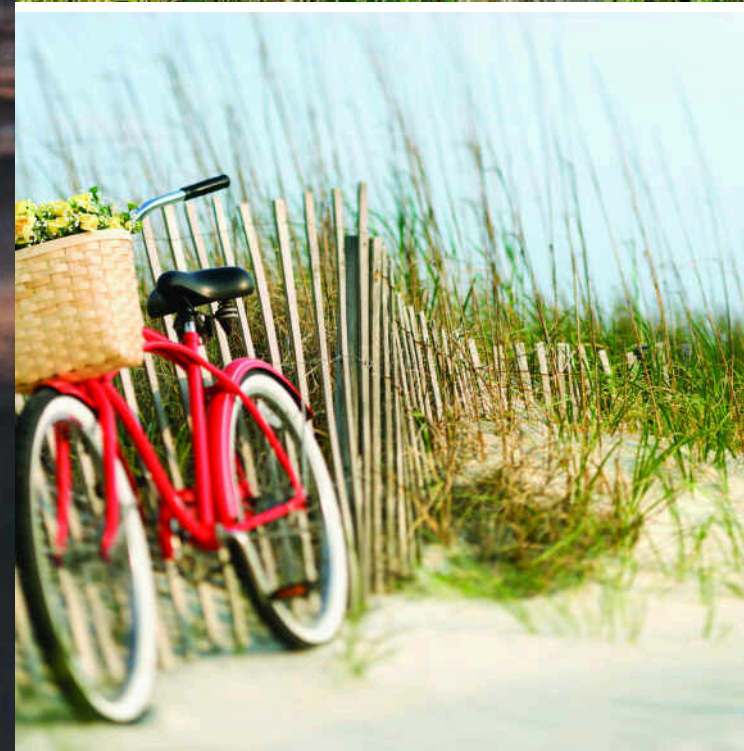


2 BEDROOM
1 BATH
TAXES: \$1,715

This character filled & thoughtfully curated Southwest Michigan charmer is offered at a bargain price! Located on a generous .75 acre lot great for hosting outdoor gatherings. Equipped with firepit, storage shed and room to roam. Inside you'll be taken by the impeccable hardwood floors, oversized trim work & arched doorways. Windows line every room in the house, filling each space with natural light throughout the day. The main level is comprised of kitchen, dining, living room, primary bedroom and a full bathroom. The upper level has an expansive second bedroom, providing a private setting for residents and guests alike. Don't miss this opportunity to own an affordable Southwest Michigan home! Just 1 MILE from downtown Bridgman & 2.6 miles from the pristine beaches of Lake Michigan at Weko Beach. On top of it all, Lake Township offers lower taxes & multiple rental options to offset your expenses. Truly one of Harbor Country's best kept secrets. Schedule your private tour today!







BEACHES AND BERRIES PRACTICALLY PUT **BRIDGMAN** ON THE MAP.

In the mid-1800s, George C. Bridgman started a farm, growing berries, fruit trees, and grapes.

At the time, the market for fruit was entirely local. That changed when Bridgman granted a railroad right-of-way through his land in exchange for the establishment of a train depot. The nursery business took off when a local grower placed an ad in an East Coast farm journal and started taking orders for strawberry and cane plants. The mail-order nursery business became a million-dollar industry in the community, and wholesale nurseries continue to thrive in the area today.

The area's Weko Beach became a destination in the 1920s with a waterfront pavilion featuring dinner, dancing, and music. The city later purchased and renovated the pavilion, now known as the Beach House.

Weko Beach continues to be a popular attraction with 960 feet of shoreline and access to the Warren Dunes State Park. There are nearly three miles of beach between Weko Beach and Warren Dunes State Park for visitors to experience.



CALEB DRYDEN

CELL: (269) 338-9012

CALEBDRYDEN@ATPROPERTIES.COM