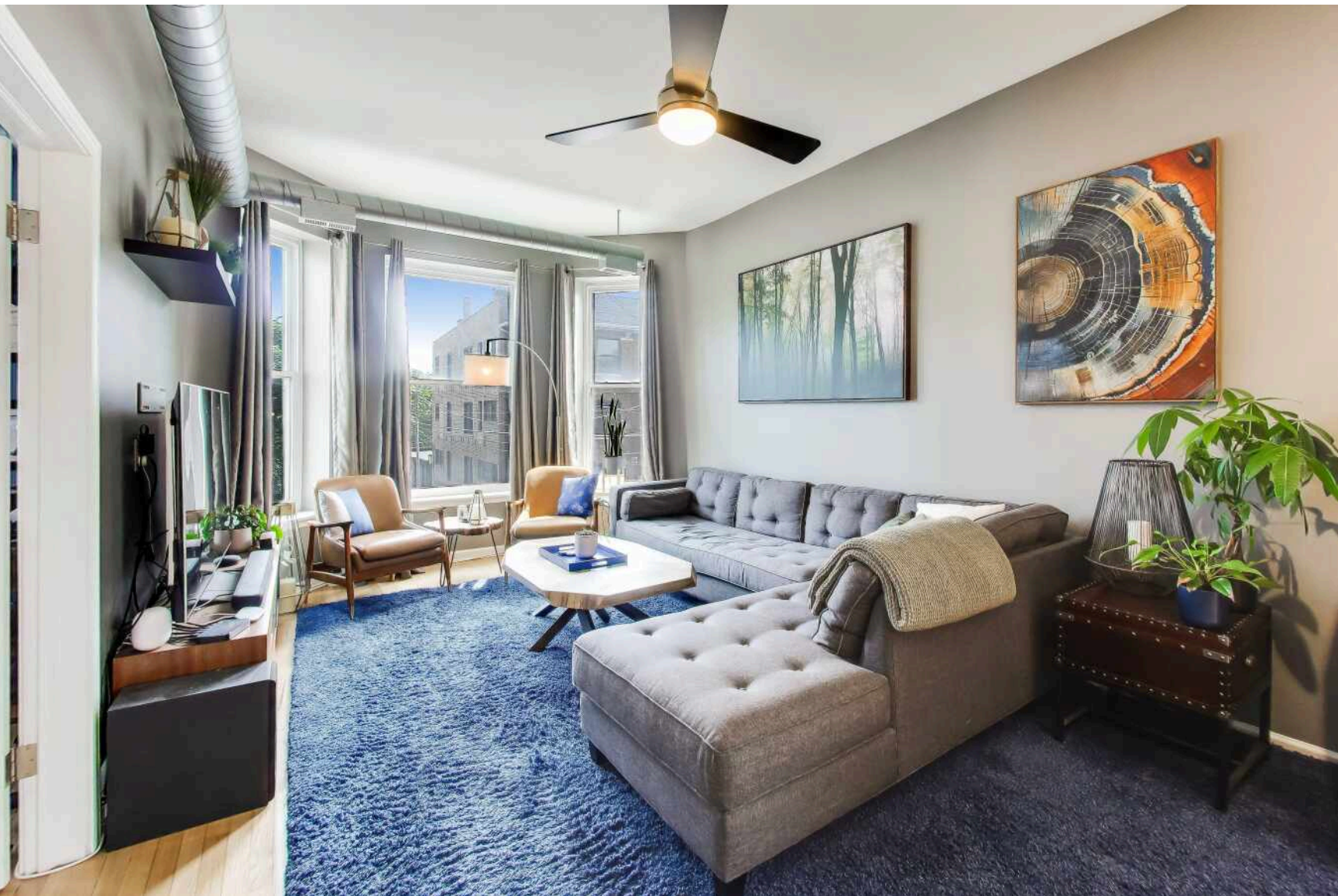


1050 W FOSTER AVENUE #F
ANDERSONVILLE



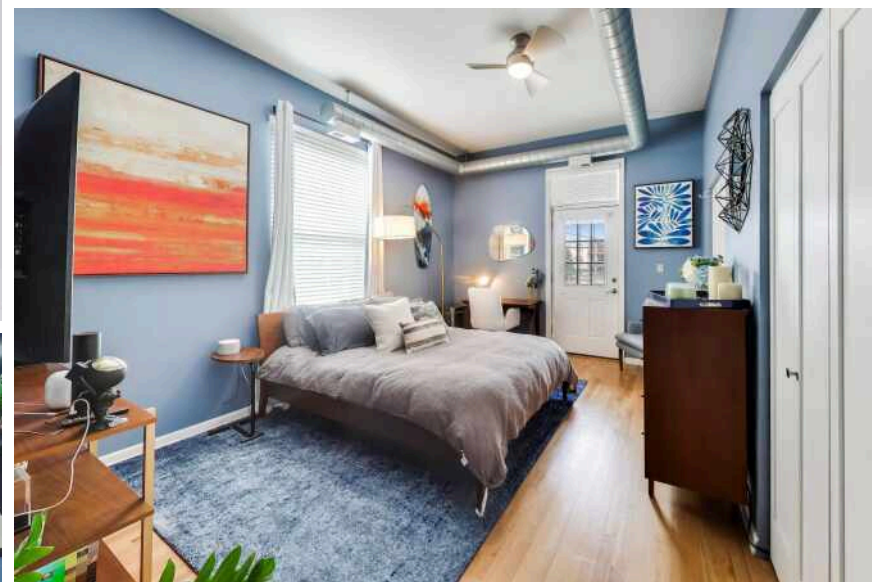
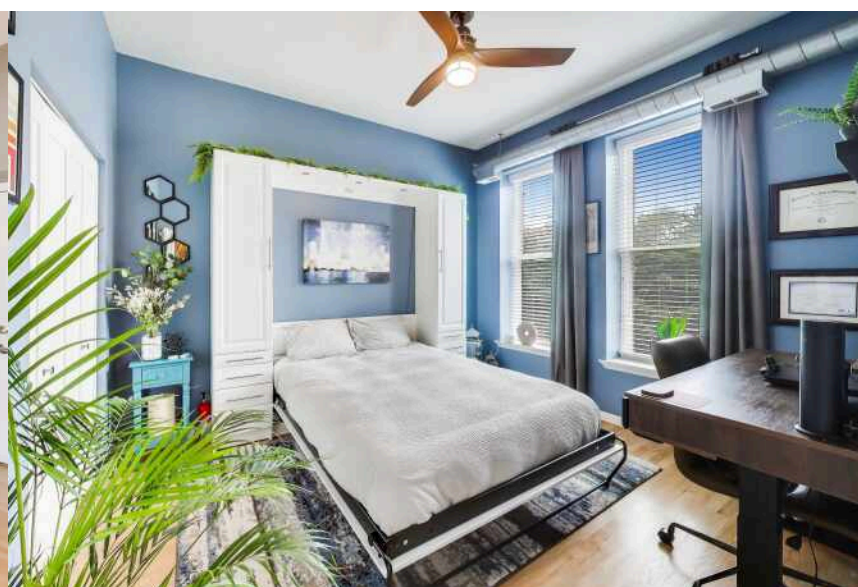
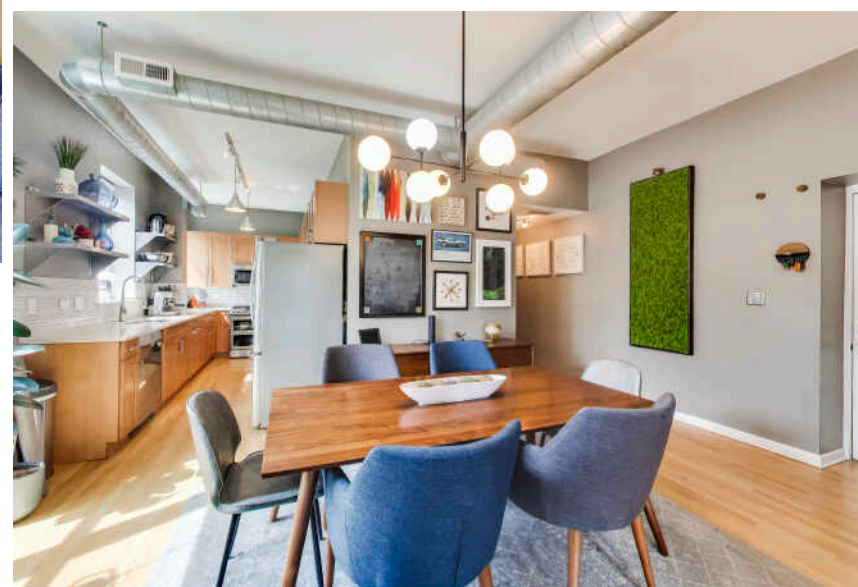
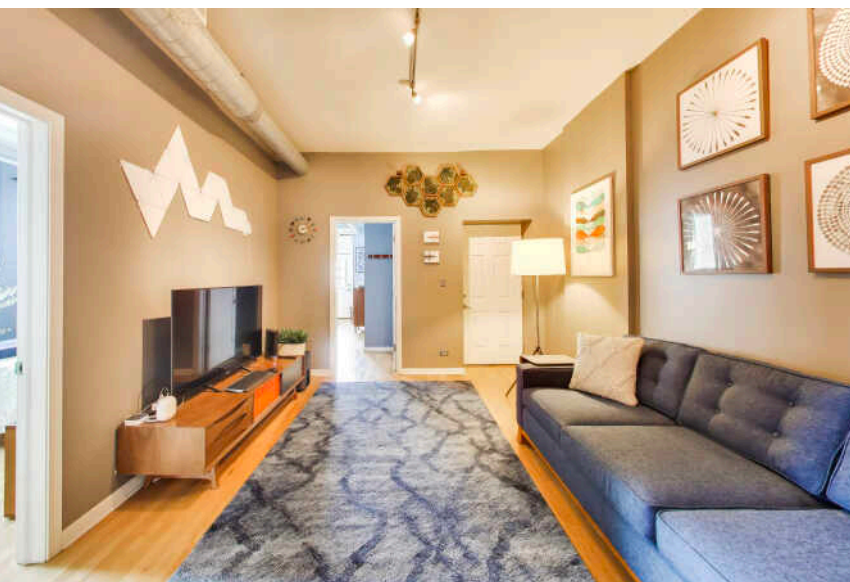


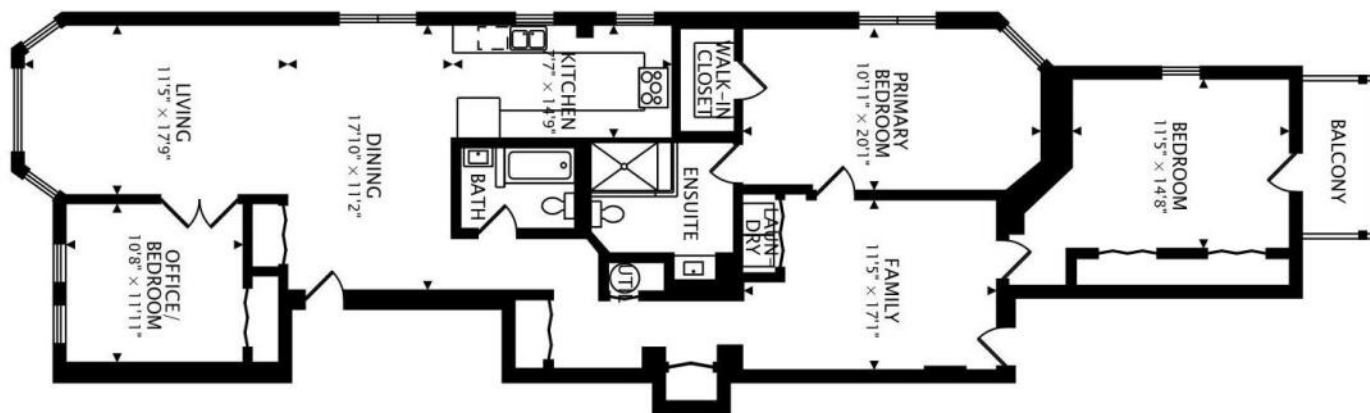
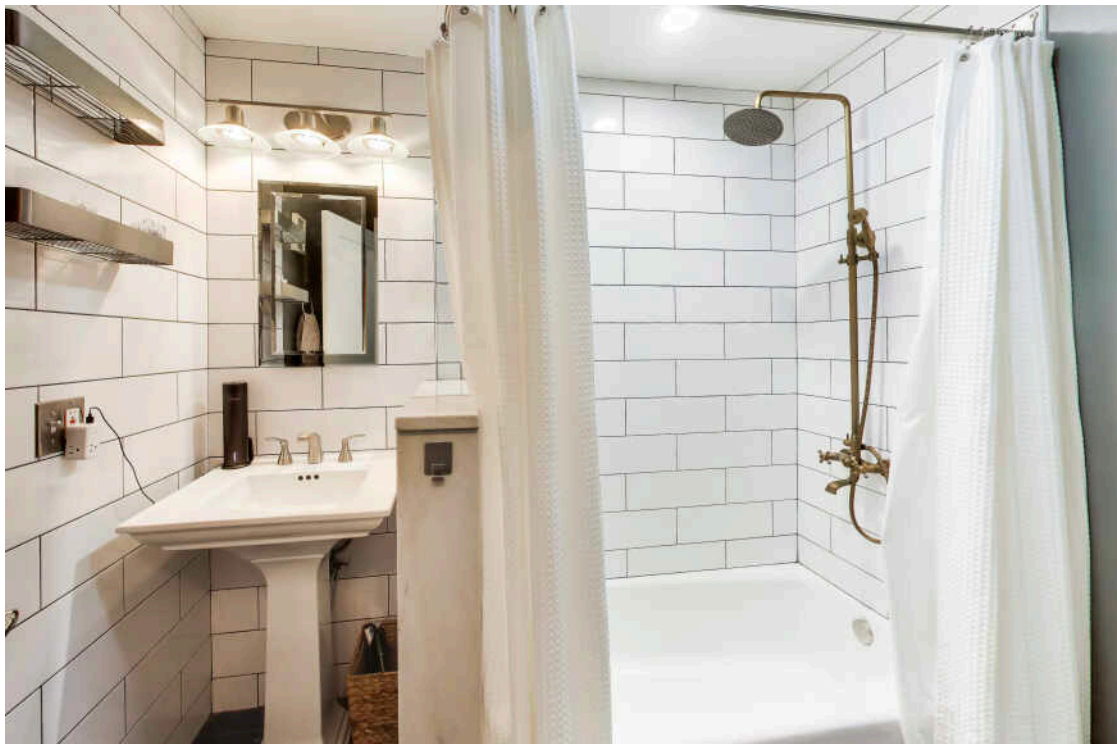
3 BEDROOM
2 BATH

NO DETAIL OVERLOOKED IN YOUR NEW ANDERSONVILLE HOME

Stunning fully updated soft loft in an intimate 8-unit converted greystone in the heart of Andersonville. This spacious 3-bedroom, 2-bath home features bright south and west exposures, soaring 10-foot ceilings, hardwood floors, exposed ductwork, and an expansive open floor plan ideal for entertaining. The chef's kitchen offers quartz countertops, maple cabinetry, stainless steel appliances, and flows seamlessly into oversized living and dining areas. Luxurious primary suite with organized walk-in closet and spa-inspired marble bath. Additional highlights include updated baths, private balcony, in-unit laundry, storage, parking, and pet-friendly living. Unbeatable location just blocks from Foster Beach, the Berwyn Red Line, Mariano's, Jewel, dining, shopping, and nightlife.

- Soft Loft with flexibility for modern living
- Steps away from Foster Beach, CTA Red Line, Jewel, Marianos and the heart of Andersonville
- Oversized living and dining space, perfect layout for entertaining
- Stainless Steel Appliances
- Two living spaces
- Convertible bedroom / den / office
- Professionally organized closets
- European inspired spa bath with body sprays, handheld, and rain shower





1850 sq ft + 49 sq ft BALCONY



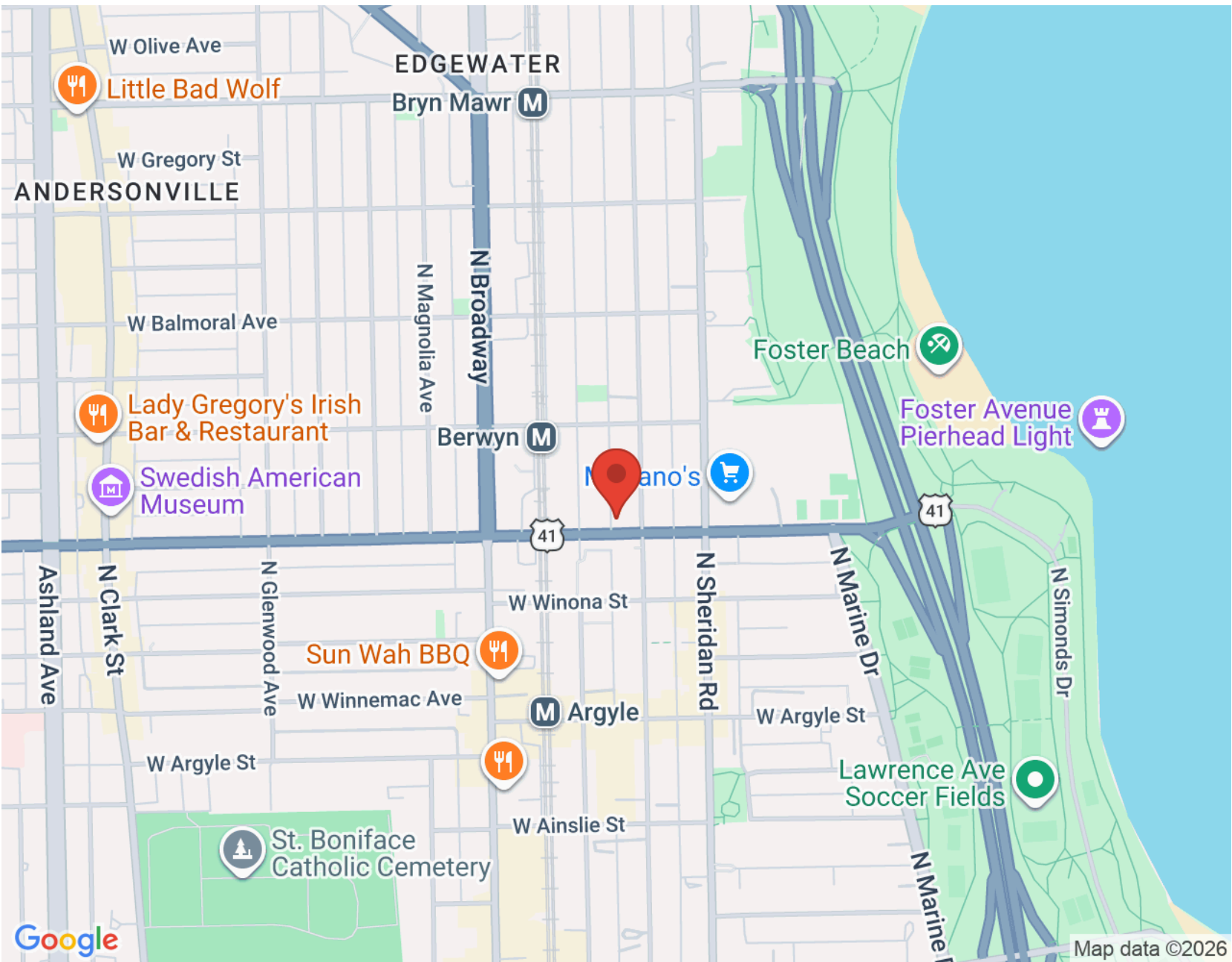


LAKESIDE LIVING NEVER GOES OUT OF STYLE IN **EDGEWATER.**

The neighborhood draws residents with its spectacular lake views, large beaches, thriving theater scene and restaurants with cuisines from around the world. Edgewater also boasts its fair share of antique shops, cafes and parks.

Encompassing a number of neighborhoods between Uptown and Rogers Park, the neighborhood offers convenience and proximity to downtown Chicago and nearby Loyola University. The community is easily accessible by Lake Shore Drive and public transportation, including the CTA Red Line and Metra's Union Pacific North Line.

Edgewater retains some of its early posh glamour with stately mansions, Neo-Gothic churches and the iconic 1920s pink Edgewater Beach Apartments. The Bryn Mawr Historic District features opulent mansions and vintage lamp posts. Edgewater housing choices also include high-rise condominiums, vintage three-flats, greystones and new-construction single-family homes.



NOTES _____



MITCH YOUNG

1 7736062164

MITCHYOUNG@ATPROPERTIES.COM

MJYOUNGREALTOR@GMAIL.COM



JOHN PARK

1 8476511983

7738620200

JOHNPARK@ATPROPERTIES.COM