

**10547 S TROY STREET**  
MOUNT GREENWOOD



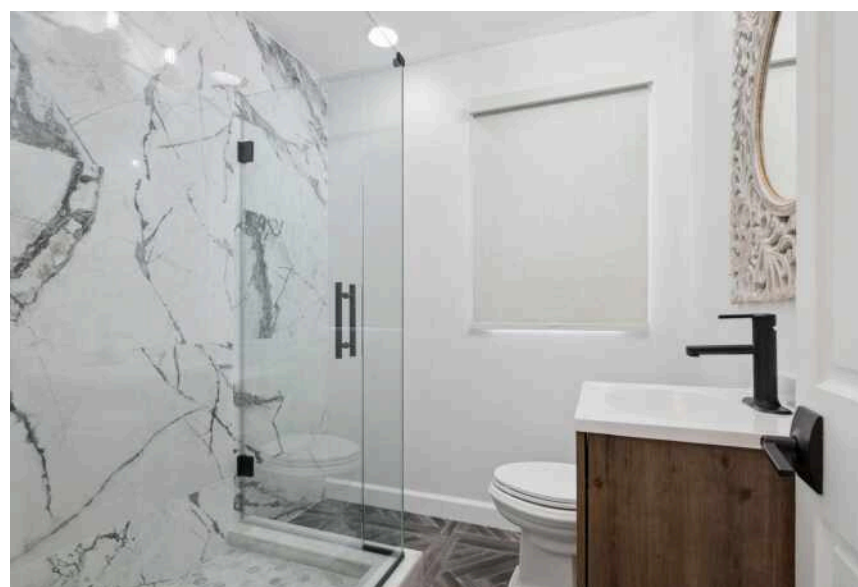
@properties®

CHRISTIE'S  
INTERNATIONAL REAL ESTATE

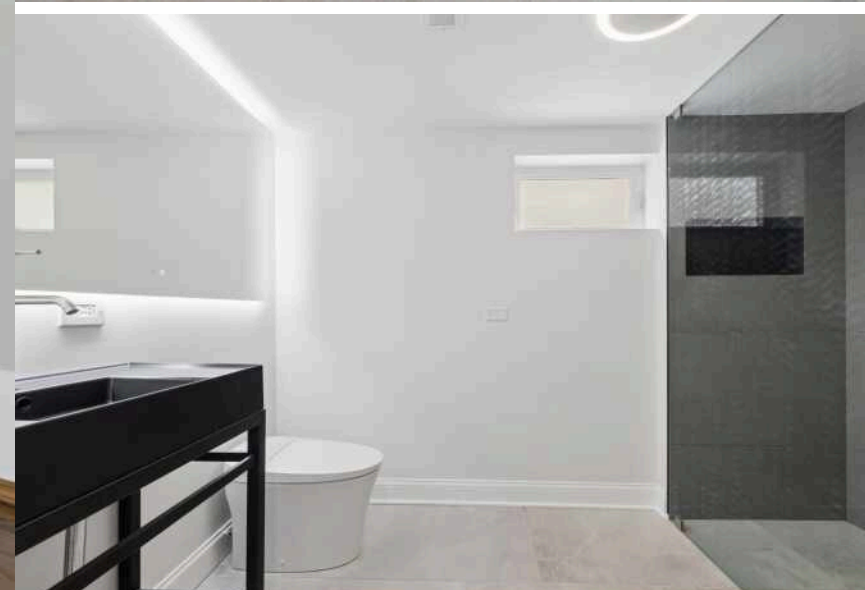
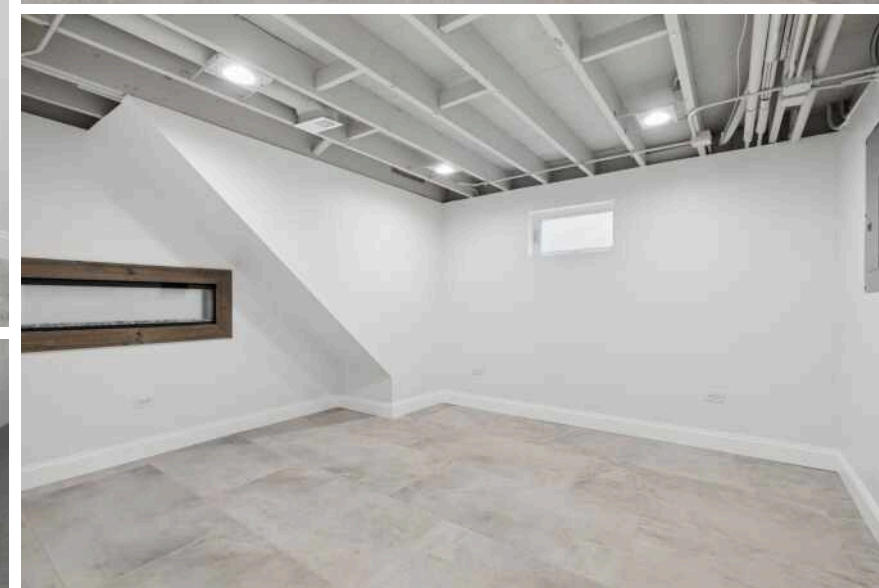
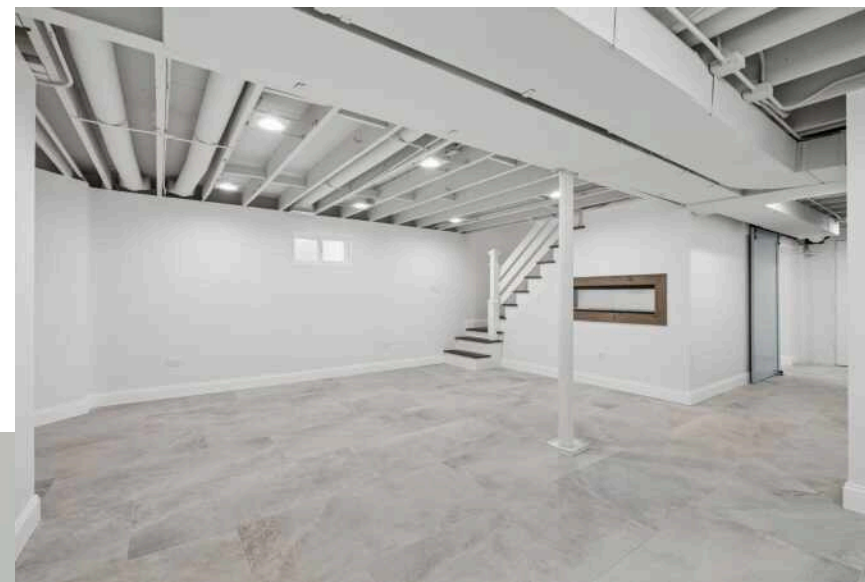


**6 BEDROOM**  
**3.1 BATH**  
**TAXES: \$6,386.75**

Fully renovated with exceptional craftsmanship and thoughtful design, this Mount Greenwood home delivers over 3,500 square feet of next-level living across four finished levels, and the quality throughout is immediately evident. The sellers truly spared no expense, selecting high-end finishes and upgrading major systems with the intention of making this their forever home. Their plans changed, creating a rare opportunity for the next owners to step into a home where no corners were cut and every detail was thoughtfully considered. From the new Pella doors (2022-2024) to luxury designer lighting and premium materials throughout, this is far more than a cosmetic renovation—this home was rebuilt and upgraded with long-term quality in mind. With 6 bedrooms and 3.5 bathrooms, this home offers the space and flexibility today's buyers are searching for. The show-stopping kitchen features quartz countertops, new appliances, a gas cooktop with electric double oven, and a striking Pottery Barn chandelier, all flowing seamlessly into the oversized dining area—making entertaining effortless. Step outside to your oversized deck and heated pool, perfect for summer gatherings and everyday enjoyment. Upstairs, the primary suite feels like a true retreat, complete with a private balcony, walk-in closet, and a fully remodeled spa-inspired bath. The fully finished basement (2022-2023) was completely gutted to the foundation and rebuilt with quality systems throughout, offering a prep kitchen with quartz and marble finishes, full bath, bonus room, and fireplace—ideal for entertaining, guests, or related living. The basement has been fully waterproofed with updated plumbing, HVAC, and sump pump systems, providing lasting peace of mind. A finished third floor adds even more flexibility with additional private bedrooms and a half bath—perfect for guests, additional living space, or a home office. There is truly nothing these homeowners haven't thought of. Every improvement was completed with care and intention, making this an incredible opportunity for the next owners to enjoy a home where the work has already been done—and done right. Located in sought-after Mount Greenwood, close to parks, dining, and everyday conveniences, this home also benefits from low property taxes and access to excellent public schools. Homes finished to this level—with this much space and this level of attention to detail—don't come around often.

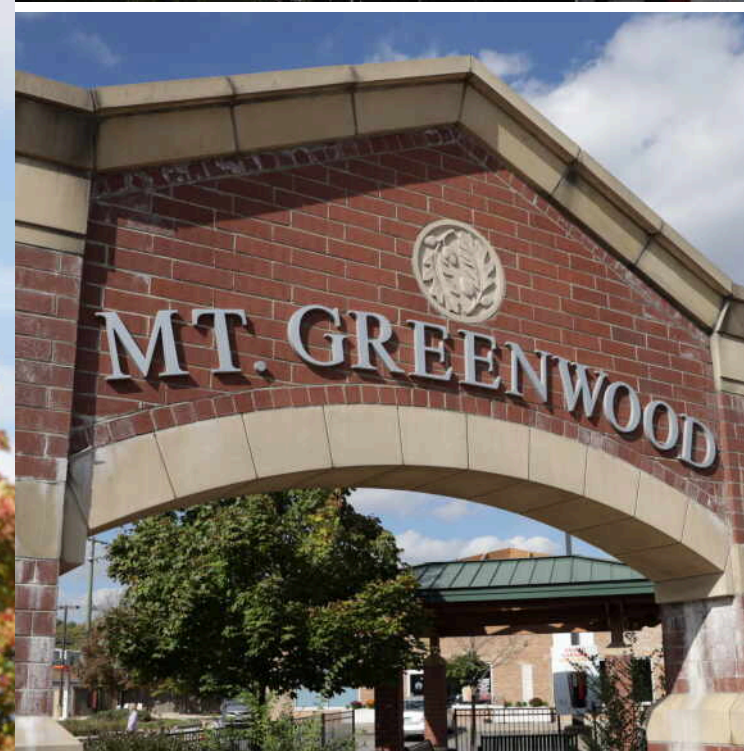








**TOTAL: 2976 sq. ft**  
 Basement: 626 sq. ft, 1st floor: 963 sq. ft, 2nd floor: 986 sq. ft, 3rd floor: 401 sq. ft  
 EXCLUDED AREAS: UTILITY: 45 sq. ft, CRAWL SPACE: 29 sq. ft, LOW CEILING: 377 sq. ft,  
 STORAGE: 37 sq. ft, WALK IN CLOSET: 57 sq. ft, BALCONY: 47 sq. ft,  
 WALLS: 266 sq. ft



## **MOUNT GREENWOOD, ONE OF CHICAGO'S 77 COMMUNITY AREAS, IS LOCATED ON THE CITY'S FAR SOUTHWEST SIDE.**

With a population of approximately 16,000, Mount Greenwood is known for its strong sense of community, close-knit residents, and ample green spaces.

This charming neighborhood boasts a diverse range of housing options, from single-family homes to spacious townhouses. The neighborhood is home to numerous parks, including Mount Greenwood Park, which features playgrounds, athletic fields, and picnic areas. Residents can also enjoy outdoor activities at the nearby Dan Ryan Woods, which offers hiking trails and a nature center.

Residents have access to a wide range of amenities within the neighborhood itself. The Mount Greenwood Branch of the Chicago Public Library provides a convenient location for book lovers to indulge in their passion. For shopping needs, the community is well-served by various local businesses along 111th Street, which offer everything from restaurants to boutique shops.

Mount Greenwood residents have access to the Metra's Rock Island District line via the 103rd Street and 107th Street stations in Beverly and the 111th Street and 115th Street stations in Morgan Park. Mount Greenwood is just nine miles away from Midway International Airport.



NOTES \_\_\_\_\_

\_\_\_\_\_

\_\_\_\_\_

\_\_\_\_\_

\_\_\_\_\_

\_\_\_\_\_

\_\_\_\_\_

\_\_\_\_\_

\_\_\_\_\_

\_\_\_\_\_



## STEFANIE CAMPBELL

CELL: (815) 997-0177

E: STEFANIE@ATPROPERTIES.COM

WEB: STEFANIECAMPBELL.COM

IG: STEFANIE.CAMPBELL

## STEFANIE CAMPBELL

THE GOLD GROUP

