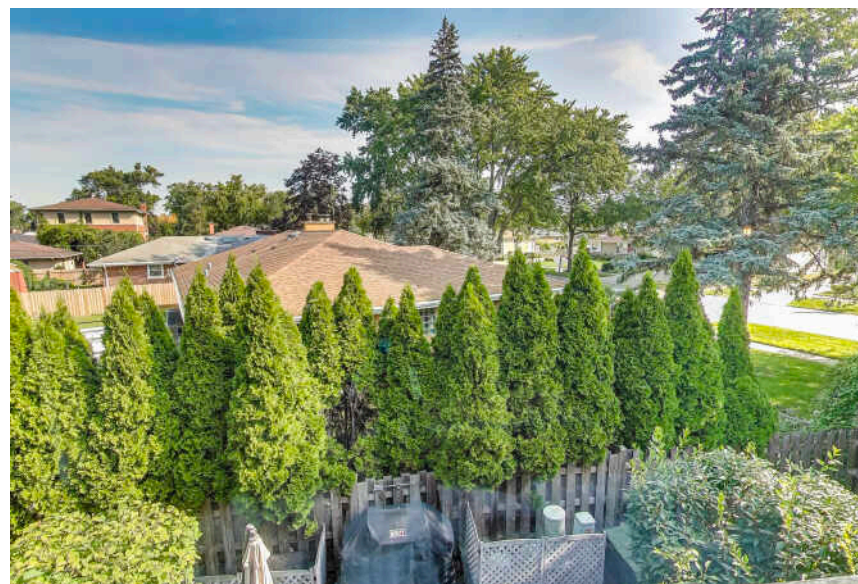


1057 BUSSE HIGHWAY
PARK RIDGE





ROOM DIMENSIONS

LIVING ROOM : 20' × 12'

DINING ROOM : 8' × 8'

KITCHEN : 12' × 9'

FAMILY ROOM : 20' × 19'

PRIMARY BEDROOM : 17' × 13'

SECOND BEDROOM : 14' × 11'

UTILITY/LAUNDRY/STORAGE : 20' × 10'

FOYER/ENTRY : 10' × 4'

WALK-IN CLOSET : 6' × 6'

2 BEDROOM

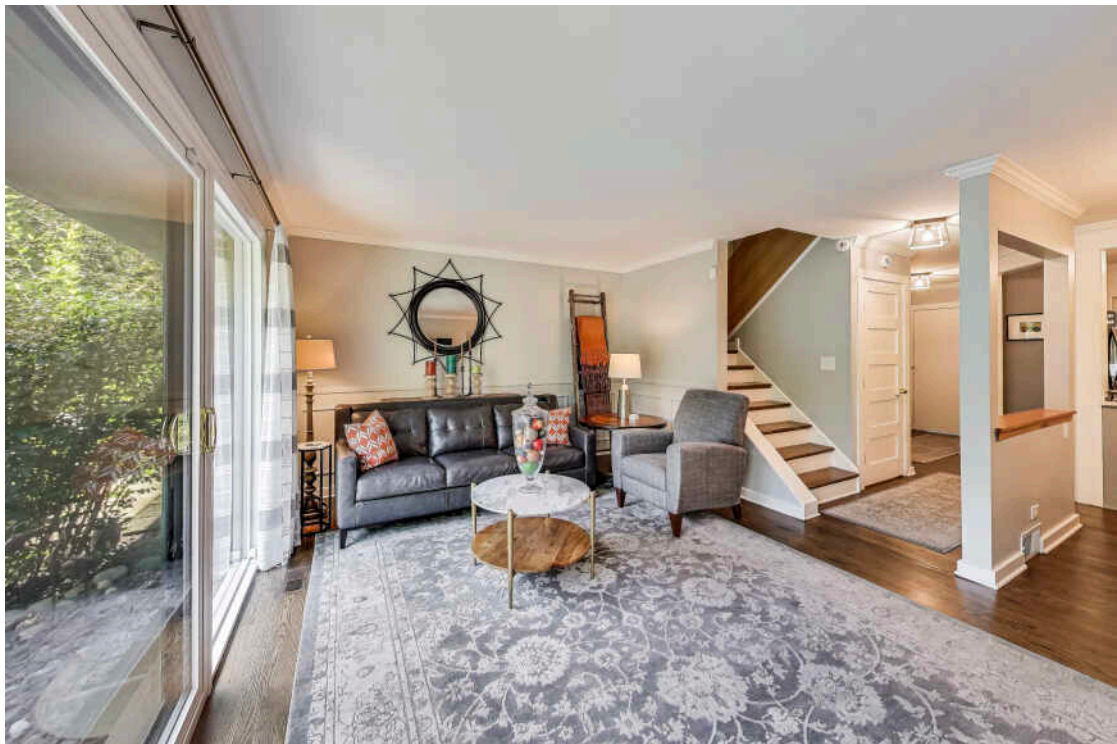
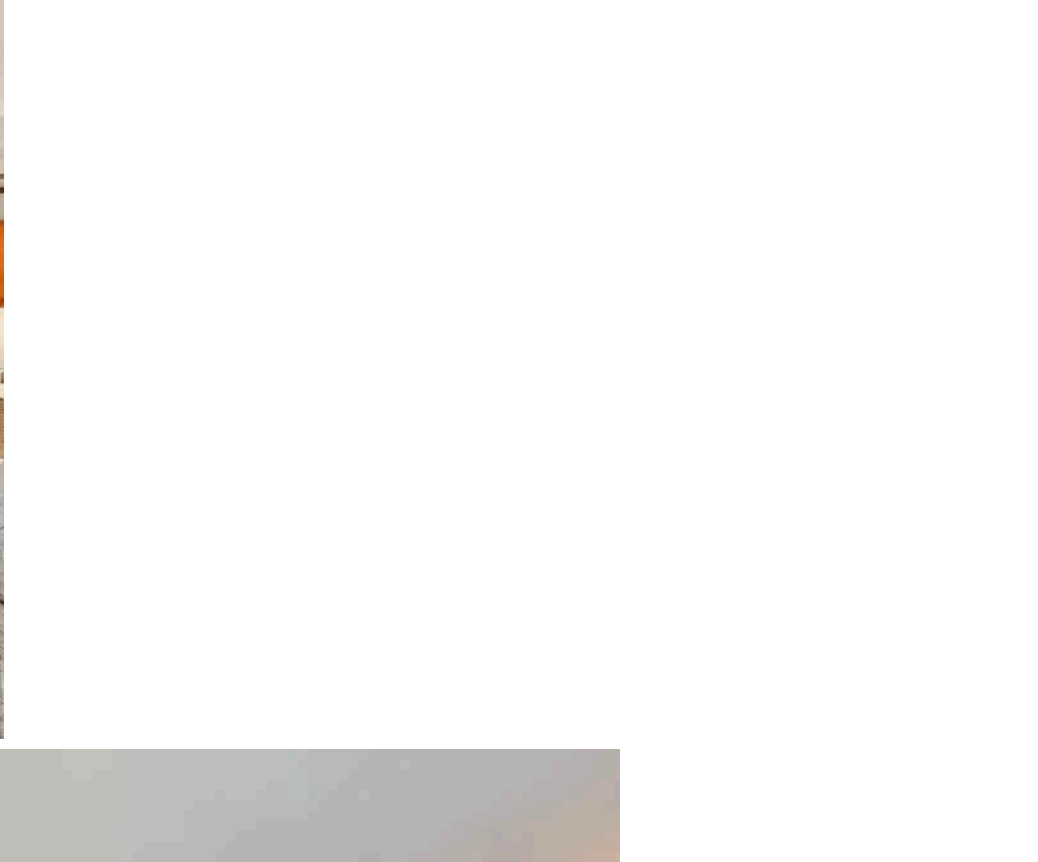
1.1 BATH

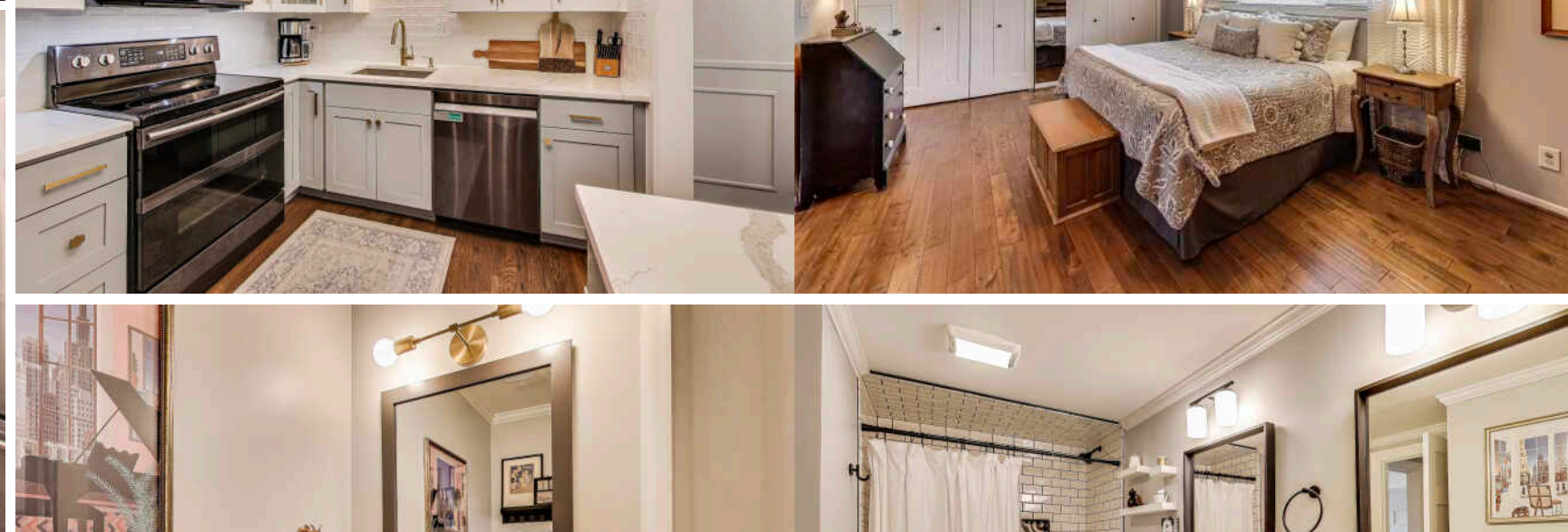
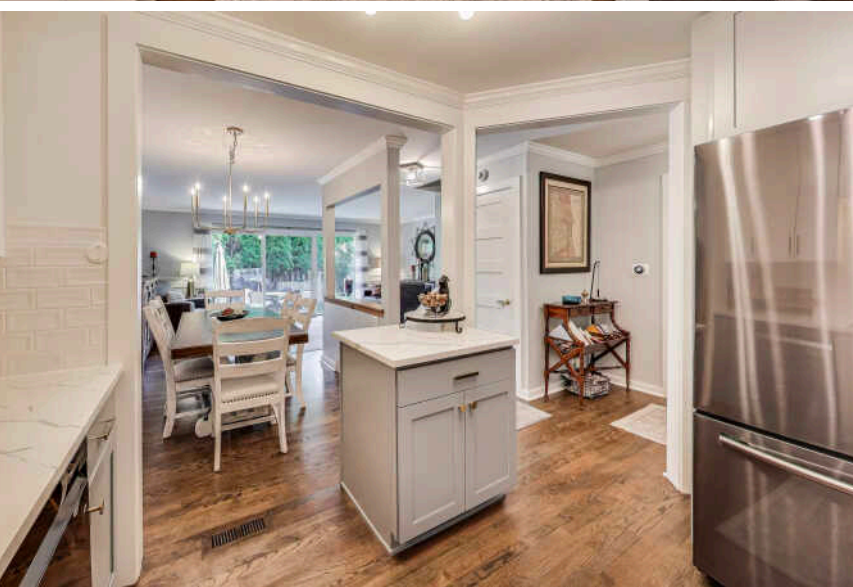
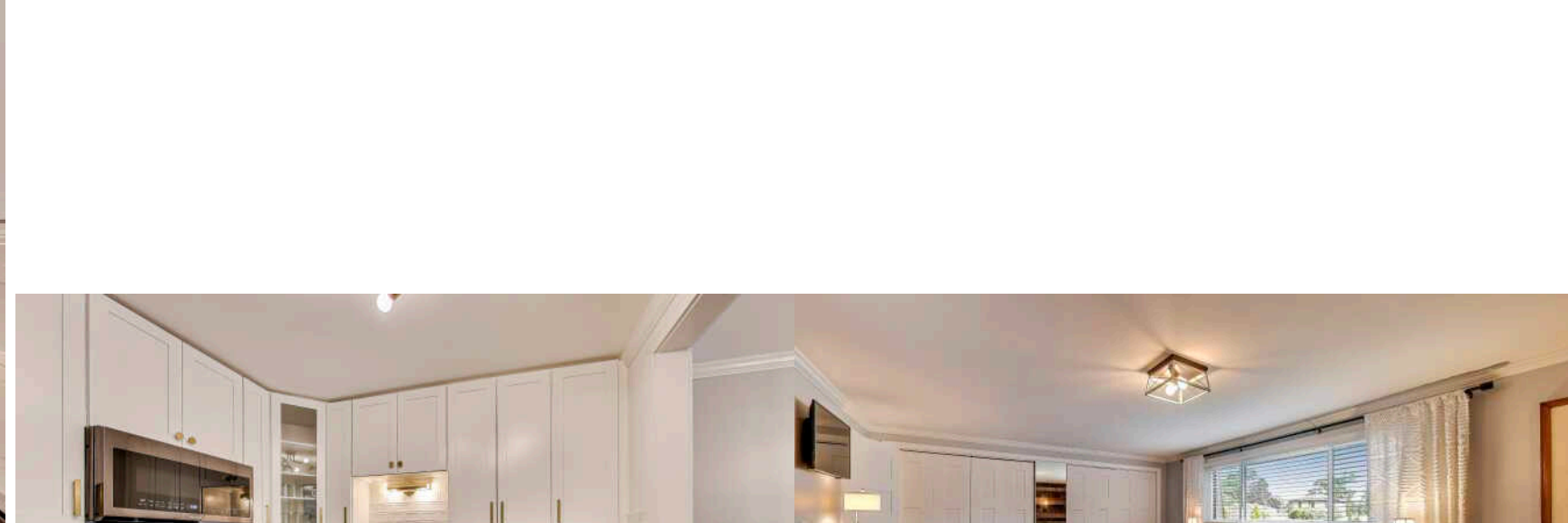
TAXES: \$7,871

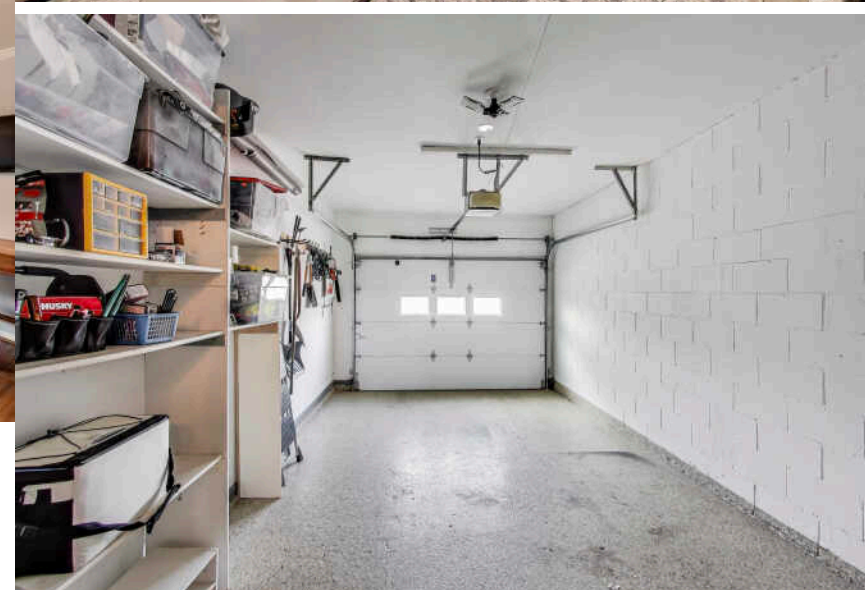
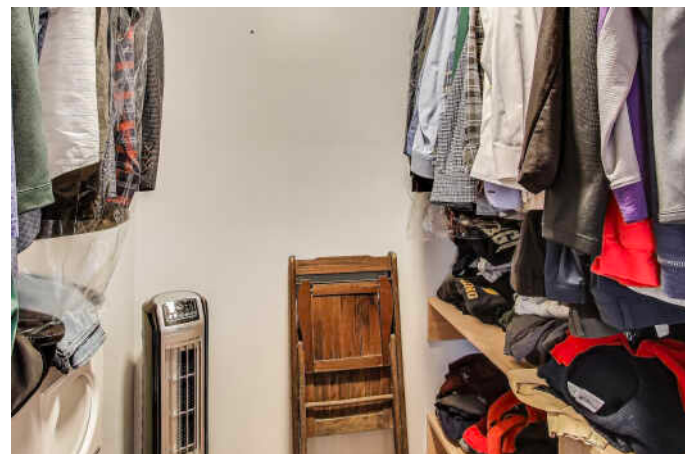
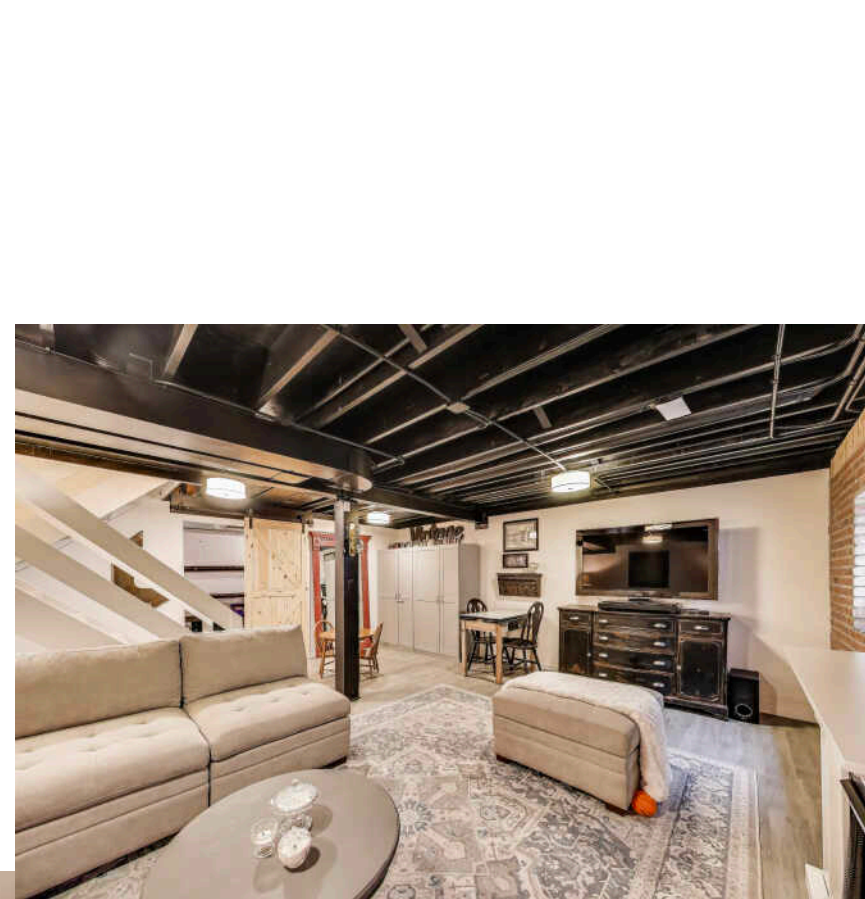
ASSESSMENTS: \$280 / MONTH

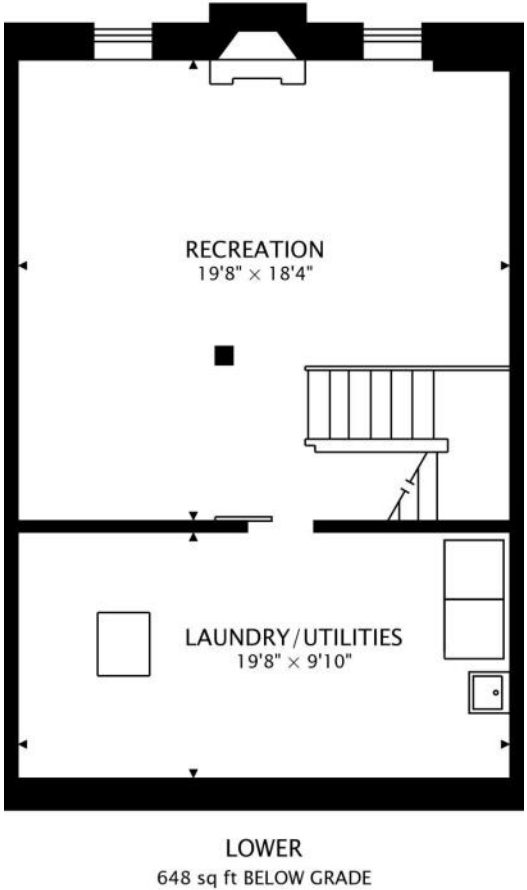
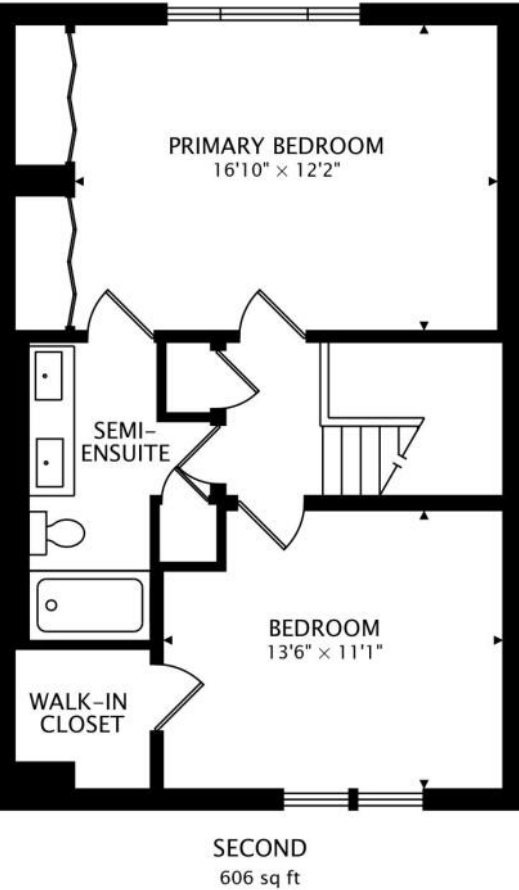
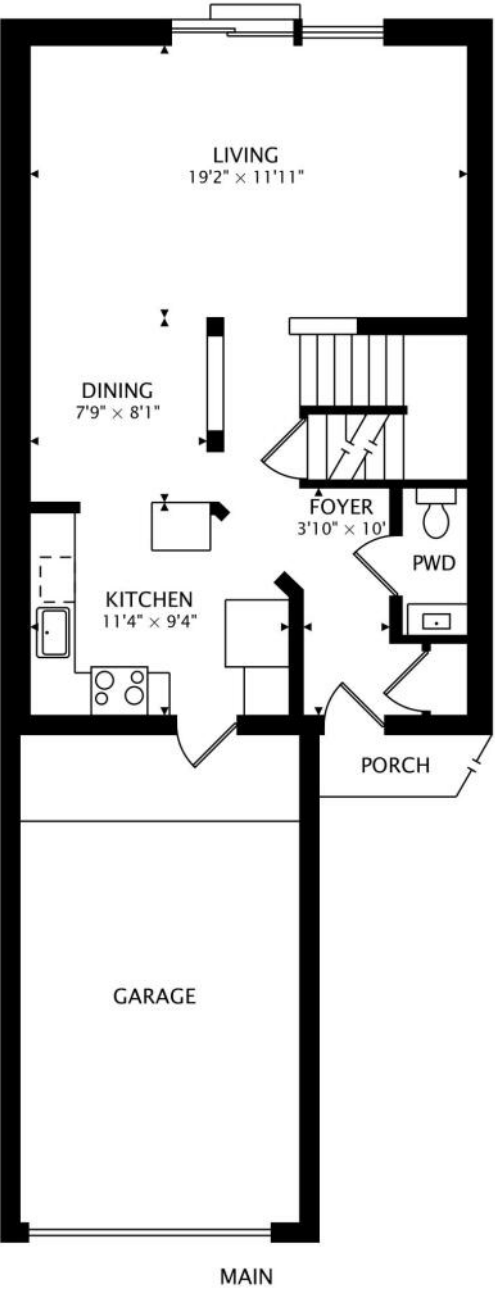
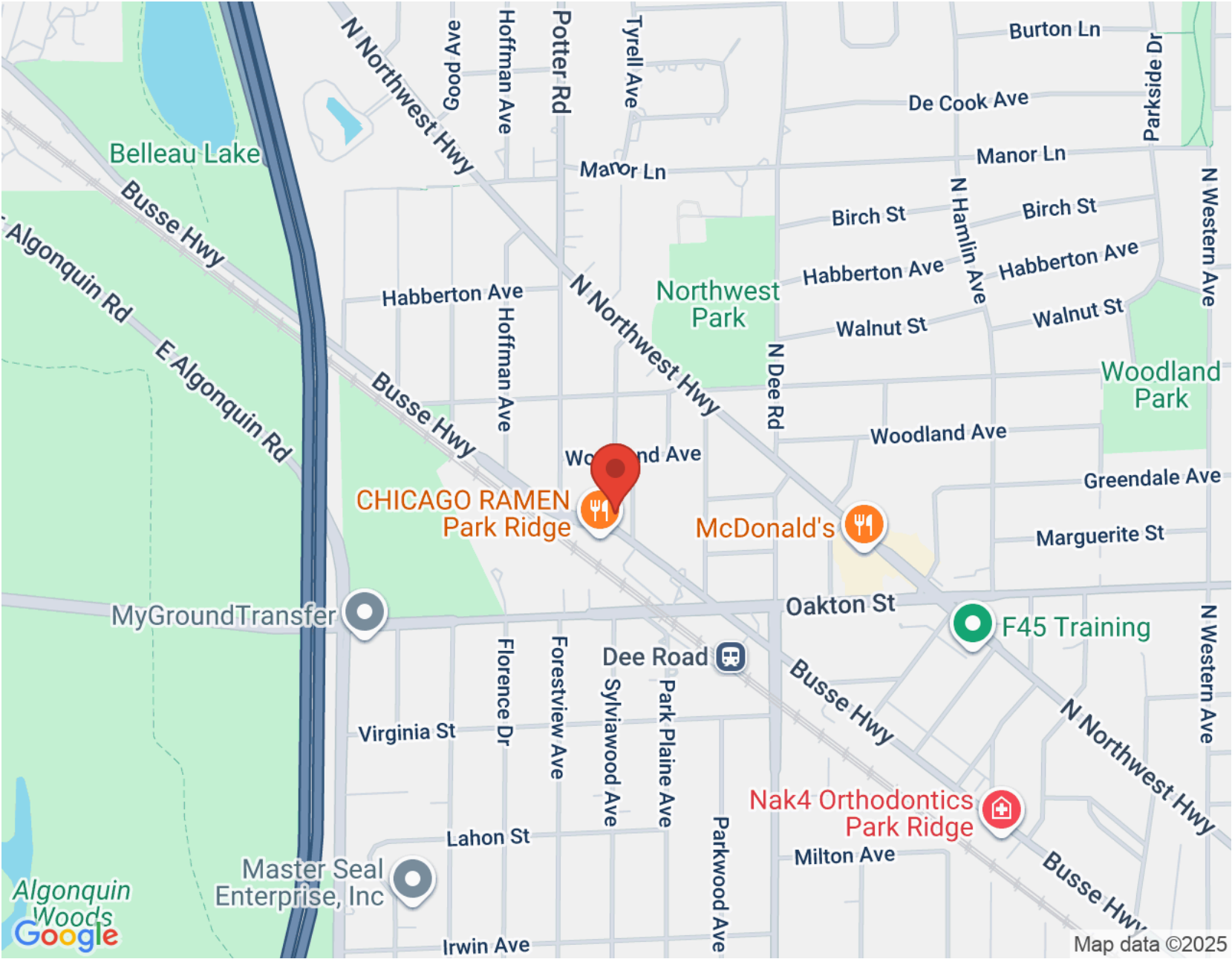
UPDATED - 3 LEVELS OF ENJOYABLE SPACE - ATTACHED GARAGE & PARKING SPACE #57

Wonderfully renovated townhome in Park Ridge. Open "reversed" floor plan (kitchen overlooks living room & dining room areas) welcomes you from private entrance - foyer/entry/kitchen & through hall plan - all with new hardwood floors including new oak treads (steps) up. New white wood kitchen cabinets, quartz countertops, suite of stainless steel Samsung appliances, subway tile backsplash small work island with cabinet space, The living room - family room feel offers oversized newer sliding doors leading out to private concrete patio area perfect for grilling & chilling. Main floor also includes powder room with quartz countertop & brushed rose gold fixtures. The second floor with newer quality plank flooring features a large peaceful primary bedroom with panoramic views, bright & stylish "shared" spa-like bathroom that includes double sink. Second bedroom features large walk-in closet and both bedrooms with new 5 panel doors & hardware. Lower Level includes recreation room with new flooring, urban feel open/blackened ceiling and brick face accent wall. "Chip & Joanna" rail door leads into oversized laundry room with Noritz tankless gas water heater, overhead sewer, sump pump/battery back up and lots of storage. Private attached garage and additional parking space #57 (can fit 2 cars/tandem). Just minutes to schools, parks, shops, dining, highways, O'Hare, train station & downtown Park Ridge. Be prepared to be in 'love at first sight'











DIRECT: (847) 456-8860

MAIN OFFICE: 847-797-0200

MARKKLOSS@ATPROPERTIES.COM

MARK.KLOSS.COM

MARK *MK* KLOSS



CHRISTIE'S
INTERNATIONAL REAL ESTATE