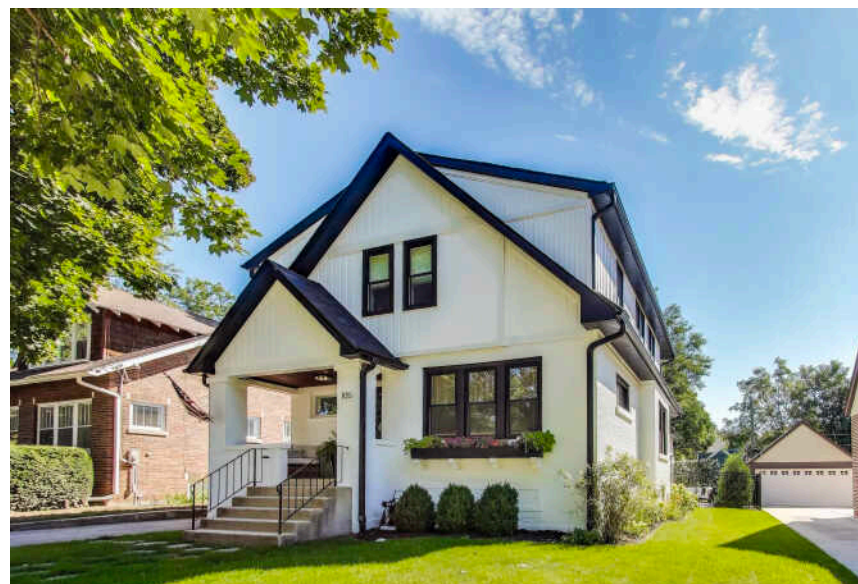
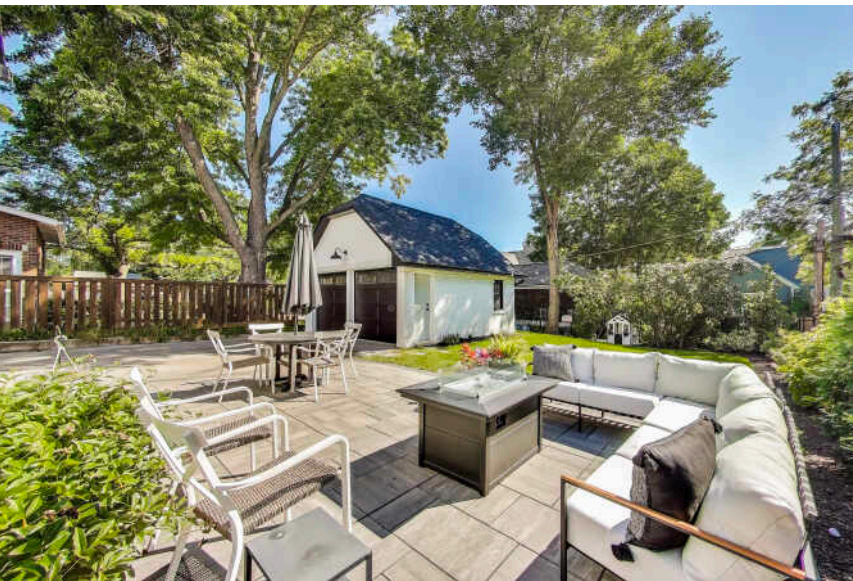


**105 S MITCHELL AVENUE**  
ARLINGTON HEIGHTS







#### ROOM DIMENSIONS

FOYER : 7' × 6'

LIVING ROOM : 16' × 14'

DINING ROOM : 14' × 13'

KITCHEN : 17' × 12'

FAMILY ROOM - LL : 35' × 14'

OFFICE/BEDROOM 5 : 12' × 10'

PRIMARY BEDROOM : 14' × 11'

BEDROOM 2 : 11' × 10'

BEDROOM 3 : 10' × 10'

BEDROOM 4 : 10' × 10'

2ND FLR LAUNDRY : 8' × 7'

WORKOUT ROOM LL : 11' × 10'

STORAGE ROOM LL : 12' × 10'

UTILITY ROOM LL : 12' × 8'

5 BEDROOM

3.1 BATH

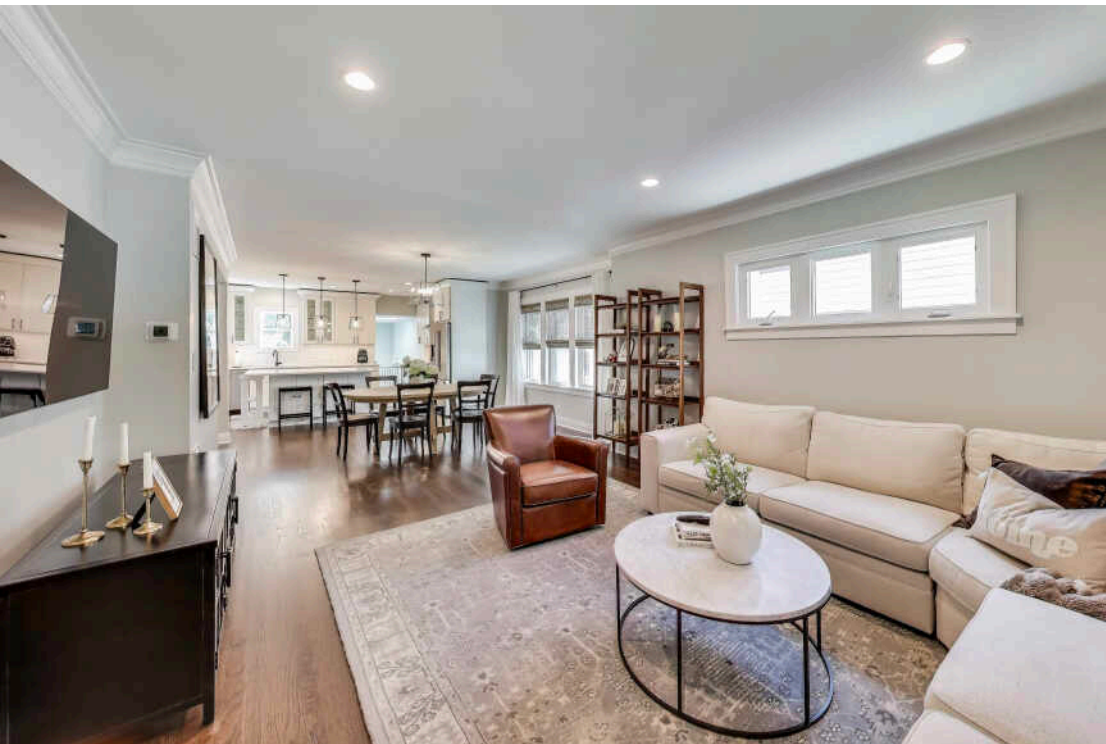
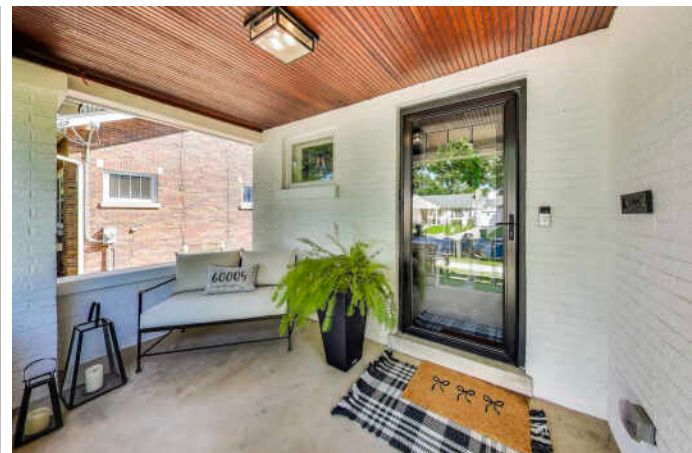
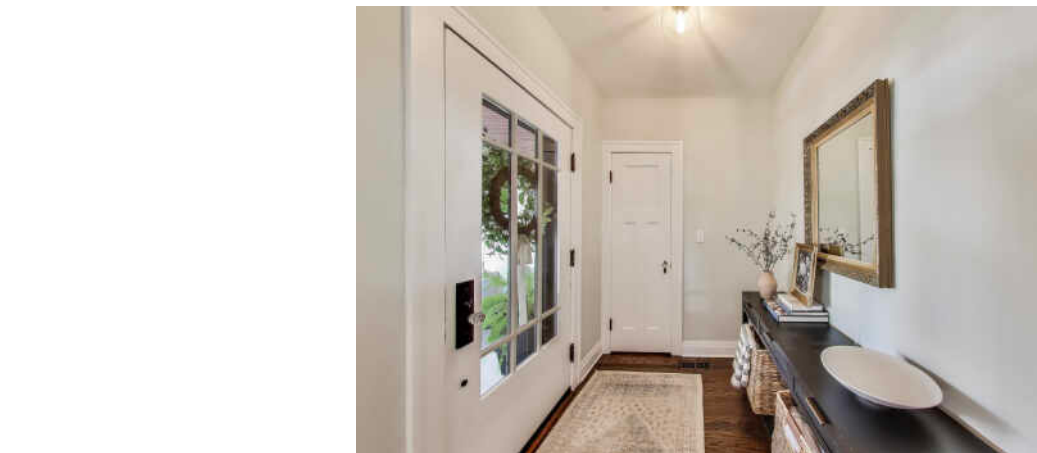
TAXES: \$12,100

## DOWNTOWN LIVING - LIKE BRAND NEW HOME - JUST UNPACK

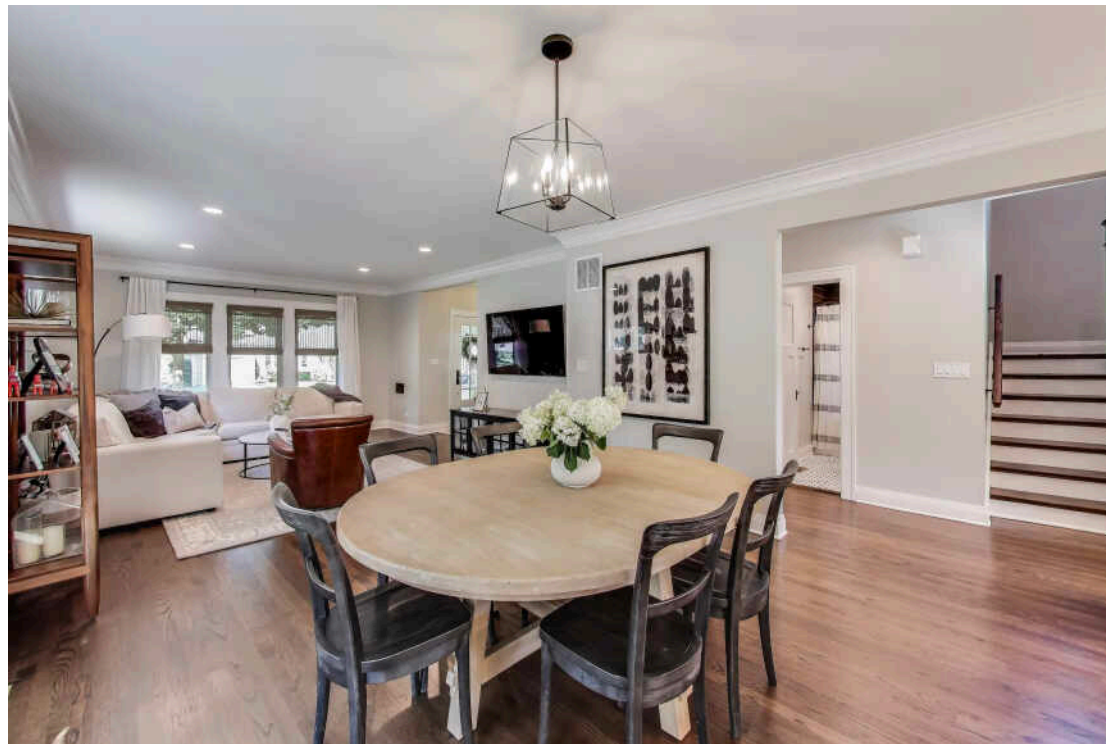
Everything you want! RARELY available, highly sought-after DOWNTOWN Arlington Heights 5 bedroom (including first-floor flex room - currently home office), 3.1 bath - like new home - in a walk to it all location! New additions/full renovation (completed 2022) and totally updated inside and out with all new plumbing, sewer line, water, kitchen, bathrooms, windows, roof, driveway, HVAC, ductwork, electrical, doors, flooring...the works! Every facet of the floorplan carefully thought out, adding plenty of storage, convenience, and upgrades. Mudroom, great pantry, broom closet, and a curated kitchen, complete with full Bosch appliances with large island overlooking the dining area and living room. Sun streaming in everywhere, filtered by new thermopane windows. Wake up every day refreshed in any of the four fantastic bedrooms upstairs, with the added convenience of 2nd floor laundry. Large primary suite with walk-in shower and walk-in closet. FULL finished lower level with a bathroom, exercise room, storage room and utility room. New spacious concrete patio. 2 car detached w/side drive 2022 driveway. Top schools: Westgate, South, and Rolling Meadows and "just steps" from all downtown entertaining, Metra and dining - Welcome home!

- All New Renovation Completed in 2022
- Fun Location - 2 Blocks to All the Food & Fun

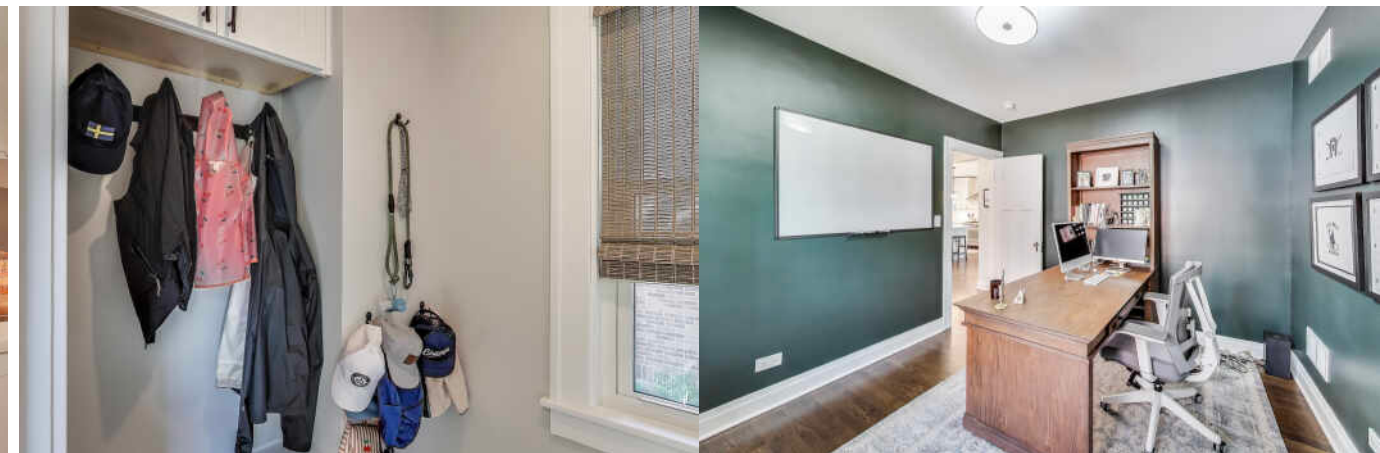




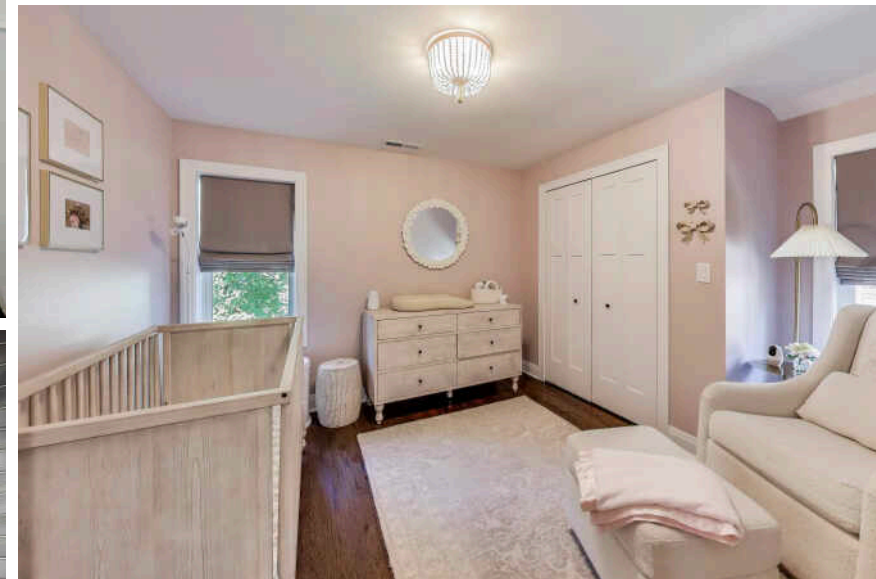
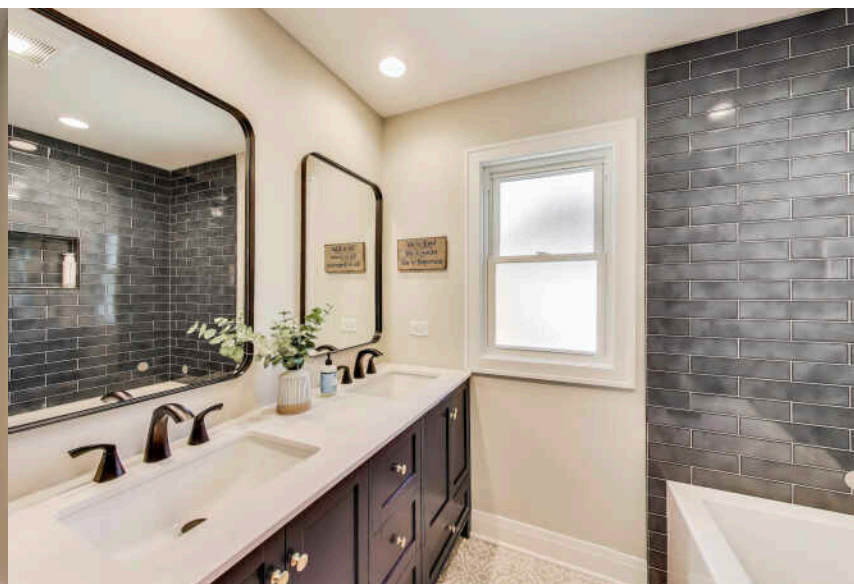
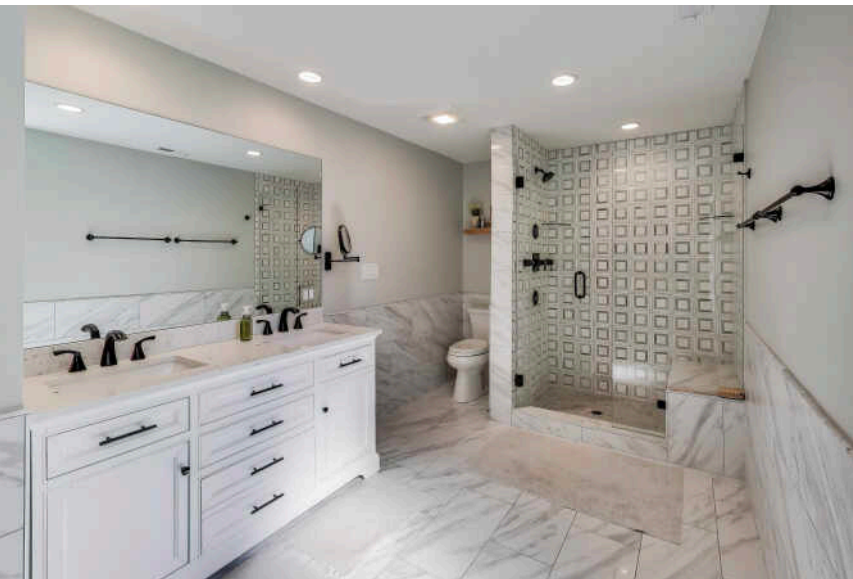
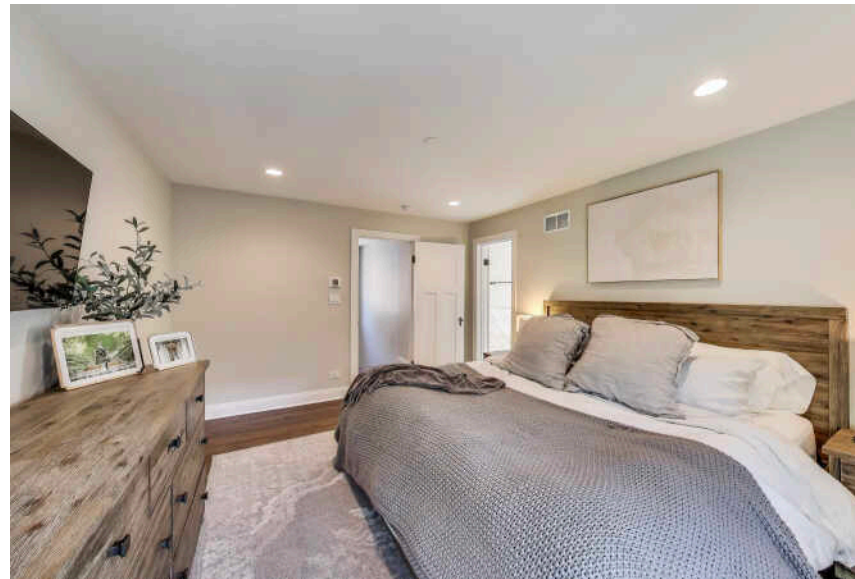




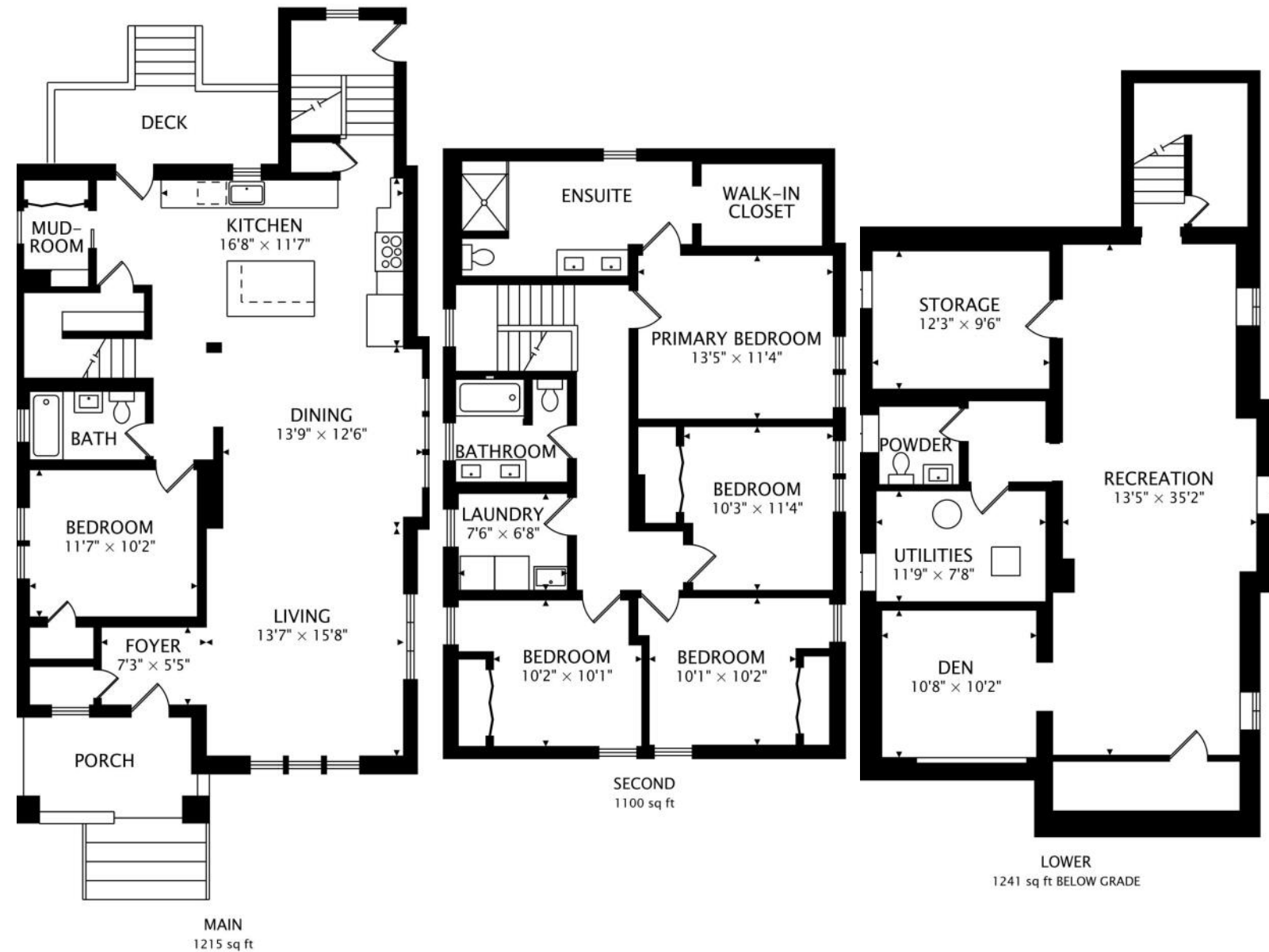
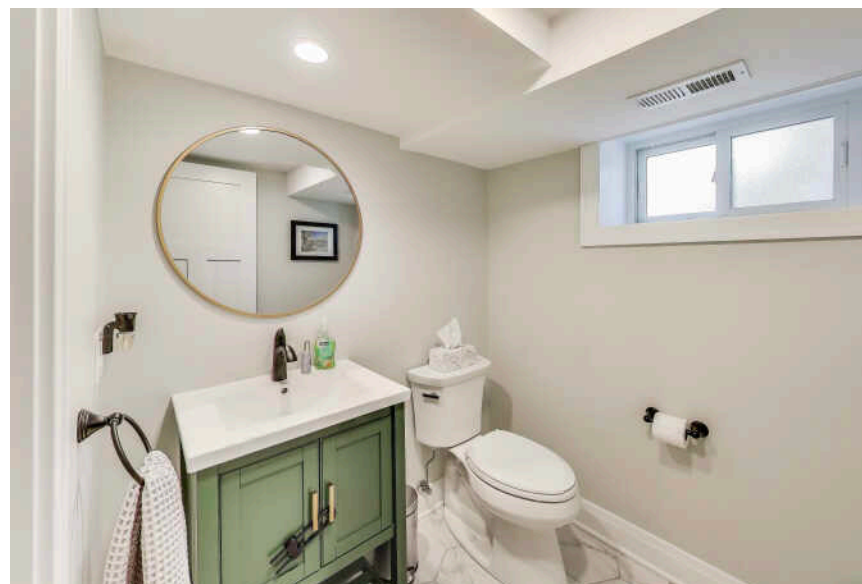
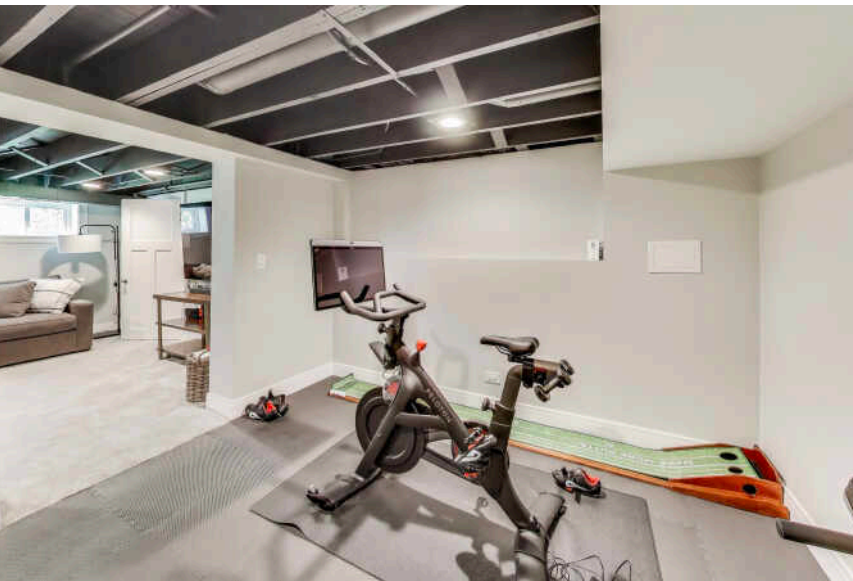
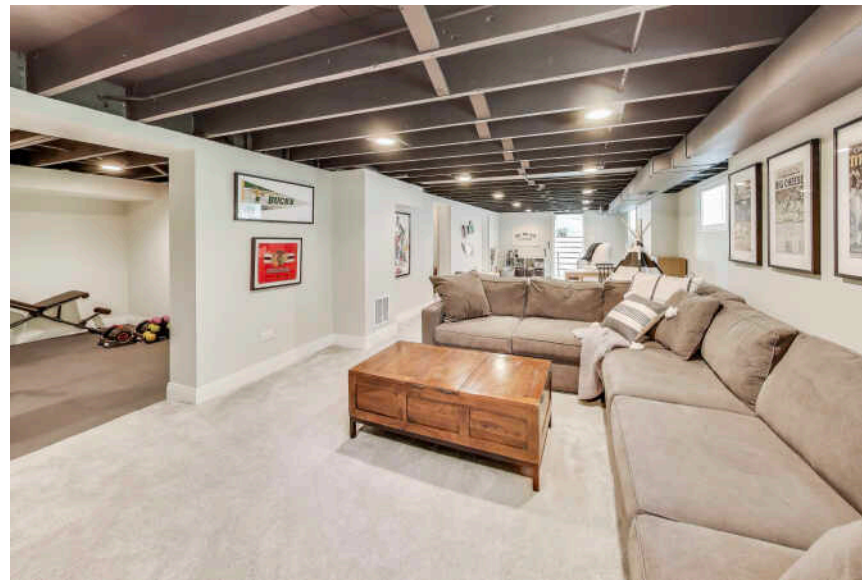




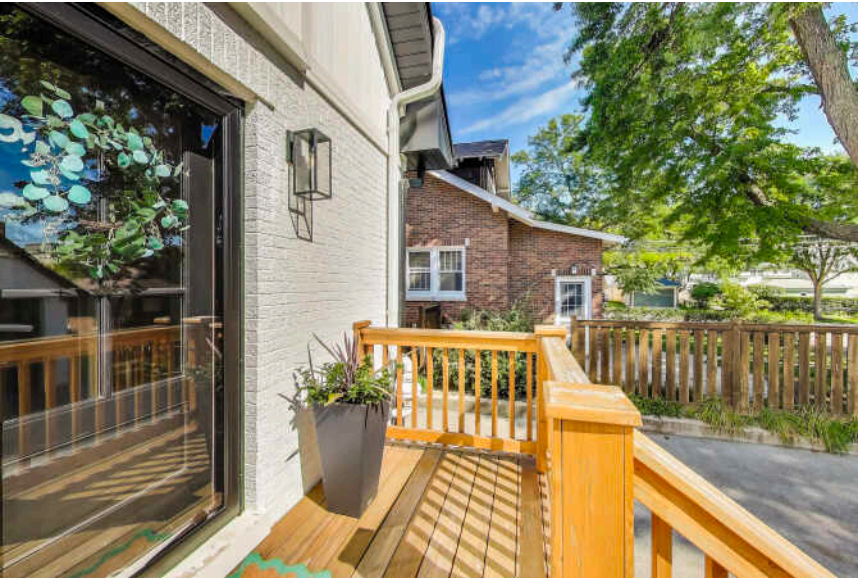
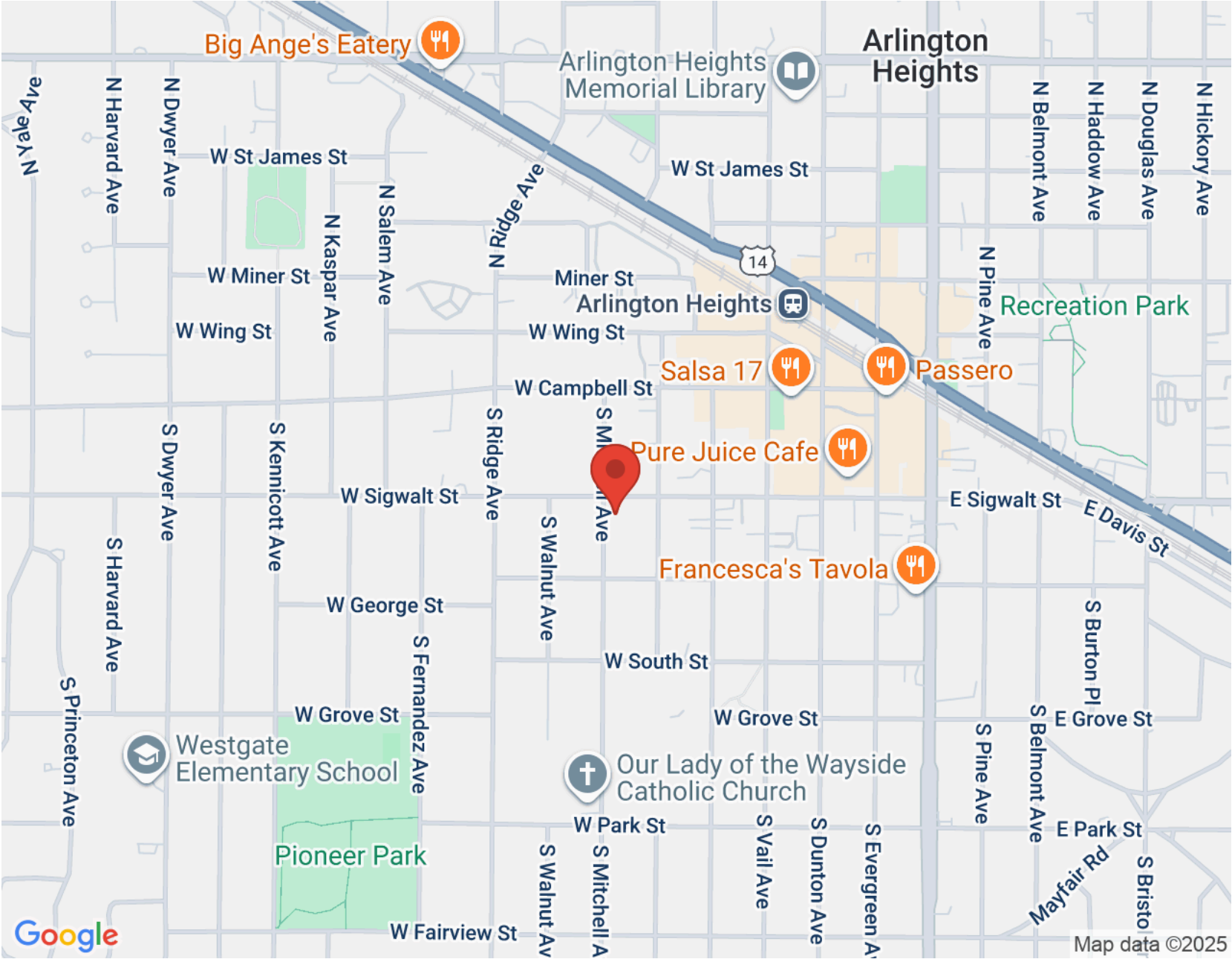
















DIRECT: (847) 456-8860

MAIN OFFICE: 847-797-0200

MARKKLOSS@ATPROPERTIES.COM

MARK.KLOSS.COM

**MARK *MK* KLOSS**



**CHRISTIE'S**  
INTERNATIONAL REAL ESTATE