

10626 SHILLING ROAD
FRANKFORT



@properties®

CHRISTIE'S
INTERNATIONAL REAL ESTATE



4 BEDROOM
2.1 BATH
TAXES: \$13,493.82

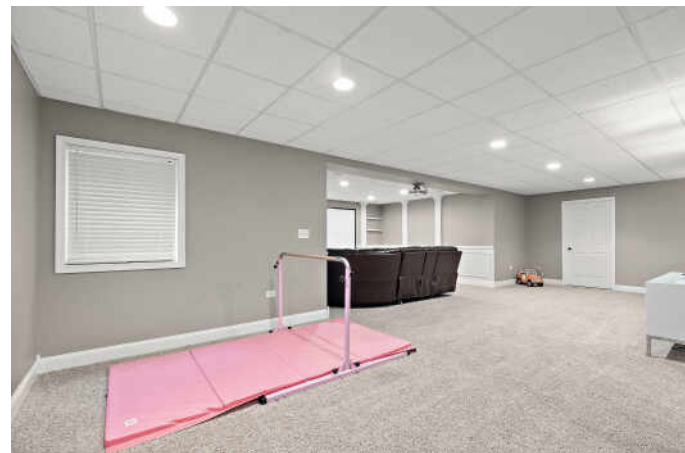
10626 SHILLING ROAD

Set in Suttondale, one of Frankfort's most sought-after neighborhoods, with direct access to the Old Plank Trail and just moments from the Creamery, Grand Prairie, and vibrant downtown Frankfort, this home offers a location that continues to set the standard for suburban living, with award-winning schools and great local restaurants just minutes away. This beautifully updated 4-bedroom home with a finished basement offers a thoughtful balance of comfort and design, with a layout created for both everyday ease and effortless entertaining. A vaulted family room anchors the main level, while the open-concept kitchen and breakfast area, complete with custom banquette seating and updated appliances, create a natural gathering space. Designed for how we live today, the home features two dedicated main-level office spaces, an updated mudroom for daily organization, and a 3-car garage wired for a 240V charger. The spacious primary suite serves as a true retreat, featuring a walk-in closet and a well-appointed bath with soaking tub and double vanities. The second level also includes three generously sized bedrooms and a full bath. The finished basement is designed for entertaining, featuring a bar with tap, home theater with projector and surround sound, and flexible space to host or work out with ease. Step outside to a brick paver patio, perfectly suited for summer evenings, relaxed mornings, and everything in between. Recent updates include new AC and furnace (2022), new sump and ejector pumps (2026), appliances, water filtration and carbon filter (2022), and more! A beautifully maintained home in an exceptional location, just moments from historic downtown Frankfort.











RECOGNIZED BY CHICAGO MAGAZINE AS ONE OF THE BEST PLACES TO LIVE IN THE CHICAGO AREA, **FRANKFORT** IS AN EXCITING COMMUNITY WITH PLENTY OF APPEAL.

Founded in 1855, the village has earned the distinction of being the “Jewel of the South Suburbs.” Frankfort maintains its roots through its historic downtown, which is home to unique boutiques, restaurants, a children's museum, and a wide variety of community events. In the heart of downtown is Breidert Green Park, which hosts year-round events including a farmers market, outdoor concerts and movies, award-winning craft and art fairs, classic car shows, a 5k walk/run, and more.

Outdoor enthusiasts take to the Old Plank Road Trail - a 20-mile bike path that winds through Frankfort and its historic downtown district. Meanwhile, Prairie Park offers more than 13 acres of preserved native prairie, natural plants, and a fishing pond.

Frankfort is located just over 35 miles from Chicago. Commuters enjoy being in close proximity to train stations along Metra's Rock Island District line.





JESSICA JAKUBOWSKI

(312) 810-6722

JESSICAJAKUBOWSKI.COM



JESSICA JAKUBOWSKI

@properties® | CHRISTIE'S
INTERNATIONAL REAL ESTATE