

1080 CARDINAL DRIVE S
LAKE ZURICH



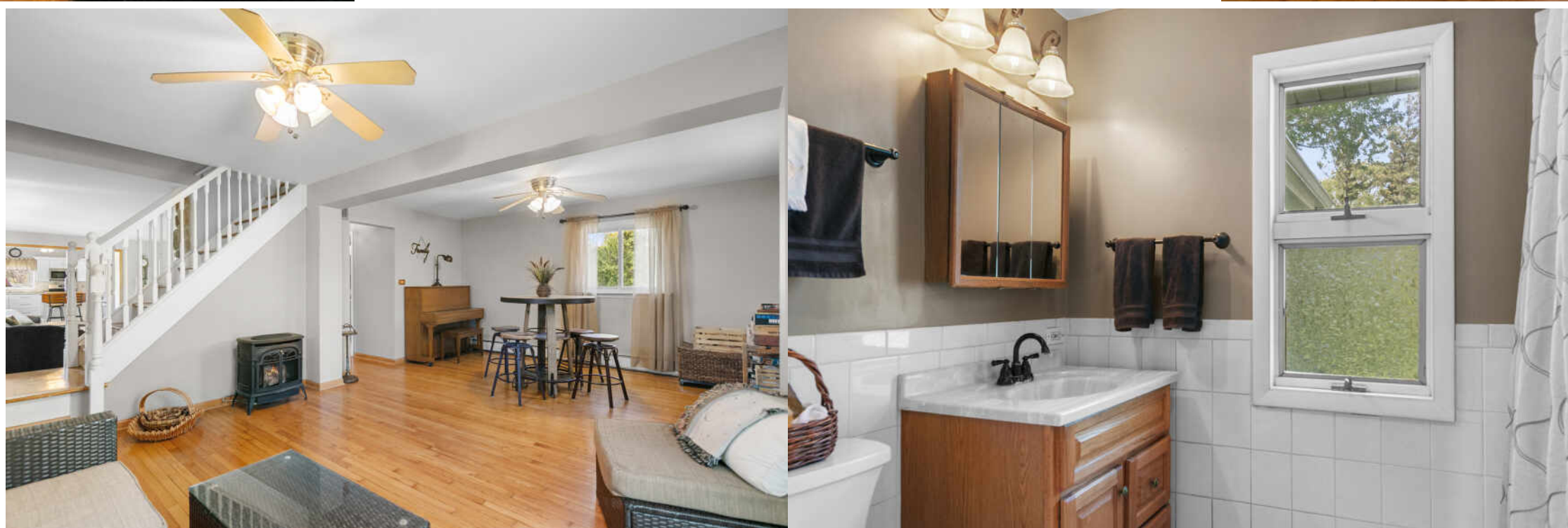


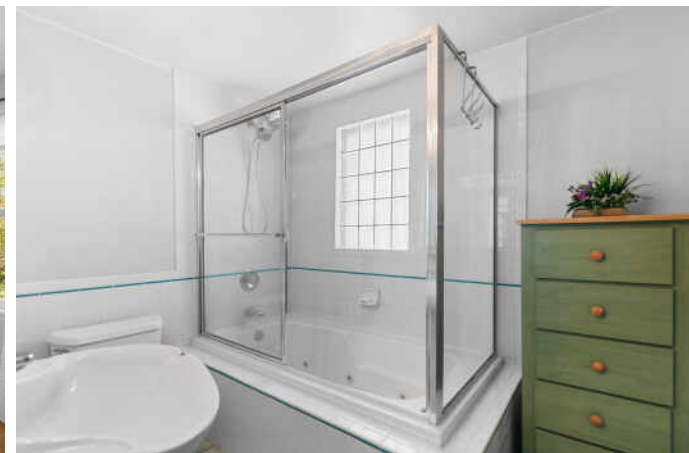
SET ON A PICTURESQUE ONE-ACRE LOT, THIS BEAUTIFULLY UPDATED COUNTRY HOME OFFERS THE PERFECT BLEND OF CHARM, COMFORT, AND MODERN UPGRADES!

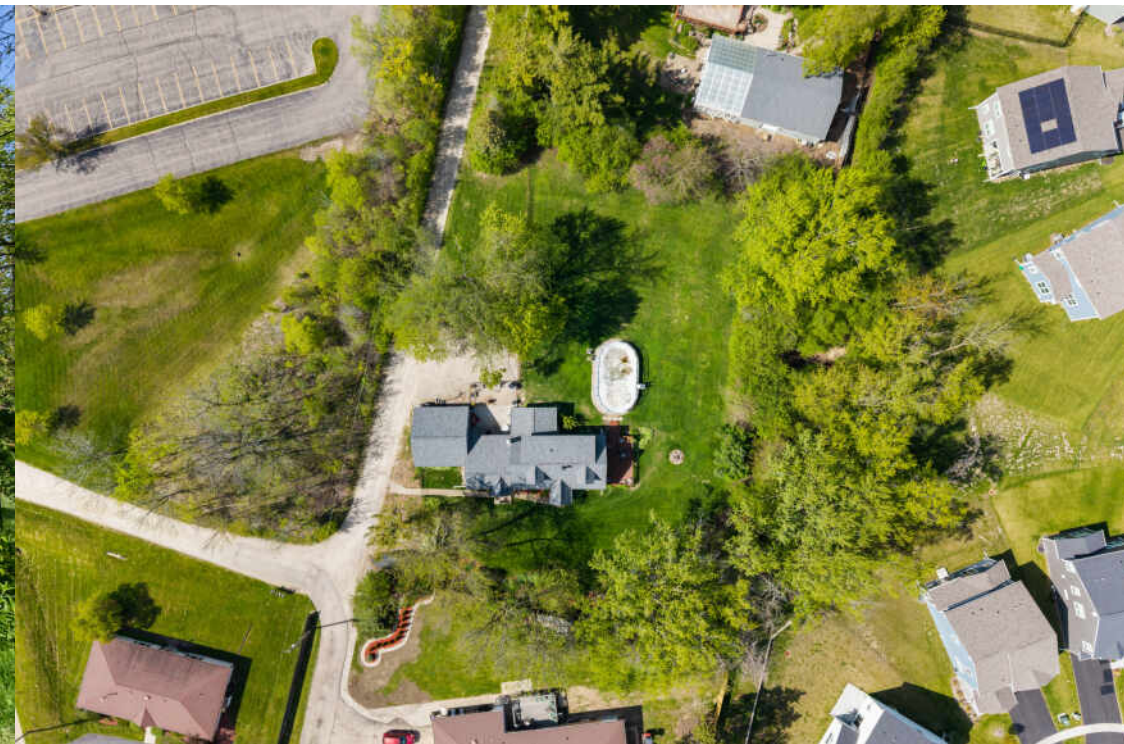
- Sunlight fills the home, highlighting the stunning updated kitchen with all NEW appliances (2019) complete with heated floors bringing both style and everyday luxury to the heart of the home.
- The open layout features expansive living spaces, including a cozy family room with a wood-burning fireplace, great room with seamless access to a large deck and screened porch with peaceful, private views.
- Step outside to enjoy the patio off the eating area for entertaining, BBQ's or unwind in the NEW above-ground pool (2024) perfect for summer days at home.
- The large main-floor primary bedroom offers convenience and privacy, while hardwood floors throughout much of the home add warmth and timeless appeal.
- Upstairs, you'll find 2 charming dormer bedrooms, custom moldings, and a whirlpool tub creating a comfortable and inviting retreat.
- Major updates provide peace of mind, including NEW Boiler and tankless water heater (2026), NEW roof, siding, gutters, and some windows (2024). All other Anderson windows are approximately 10 years old.
- Attached 2 car garage with a huge walk-up loft, offering incredible storage or potential for future use.
- A setting you'll love coming home to!

3 BEDROOM
2 BATH
TAXES: \$10,687











AT THE HEART OF THE IDYLIC VILLAGE OF **LAKE ZURICH** IS ITS NAMESAKE LAKE.

A charming boardwalk lines the lake near Main Street.

The village regularly appears on “best places” lists, and has been named one of the “Top 20 Affordable Places to Live in the Country” by *U.S. News*. Lake Zurich boasts a variety of single-family homes, custom new construction, and townhomes with neighborhood green space, ponds, and parks.

The community has a small-town feel, and hosts several local events. Since 1942, Lake Zurich’s Alpine Fest has been a neighborhood favorite, attracting more than 10,000 visitors for good old-fashioned carnival rides, entertainment, and a parade down Main Street.

Residents have easy access to nearby I-90 and Metra stations in Palatine and Barrington.



JULIE PAWL

(847) 845-9348

JPWL@ATPROPERTIES.COM

WWW.JULIEPAWL.COM



@properties®

CHRISTIE'S
INTERNATIONAL REAL ESTATE