

# 108 CALLIE COURT

MORTON GROVE





#### ROOM DIMENSIONS

LIVING ROOM : 31' × 12'

KITCHEN : 8' × 10'

DINING AREA : 10' × 10'

PRIMARY BEDROOM : 23' × 13'

BEDROOM 1 : 15' × 10'

BEDROOM 2 : 13' × 10'

LOFT : 14' × 20'

Experience the comfort and flexibility of a townhouse that lives like a single-family home nestled in the middle of The Woodlands of Morton Grove. With an attached 2-car garage on the lower level and two full floors of living space above, this home offers the privacy and layout of a traditional house without the maintenance. Both the front entrance and garage entry open into their own foyer spaces ideal for shoes, coats, and everyday drop zones. Ample storage closets on each level provide convenience and help keep the home organized.

The main level welcomes you with soaring vaulted ceilings and dramatic floor-to-ceiling windows that fill the open-concept living and dining area with natural light. The spacious eat-in kitchen opens to a private patio—perfect for morning coffee or evening grilling. The primary suite is tucked away on this level for privacy and features two large walk-in closets. A half bath, full-size laundry room, and generous storage area add to the home’s everyday convenience.

Upstairs, you’ll find two bright and comfortable bedrooms with peaceful views of the pond, one with its own walk-in closet, plus a full bathroom and a versatile loft space that can serve as a home office, study, playroom, or additional lounge area. Each room is well-proportioned, and the upper-level layout creates a natural separation between private and shared spaces. Another large storage area upstairs ensures everything has its place, from seasonal items to extra linens.

This well-maintained home also features a completely new HVAC system, offering peace of mind and year-round comfort. The community is professionally managed with onsite staff and is conveniently located near the Metra, forest preserves, bike trails, parks, library, Amazon Fresh, community pool, and I-94. Located in the highly regarded Park View D70 and Niles West D219 school districts, this home is ready for you to move right in and enjoy the space, comfort, and convenience it has to offer.



3 BEDROOM

2.1 BATH

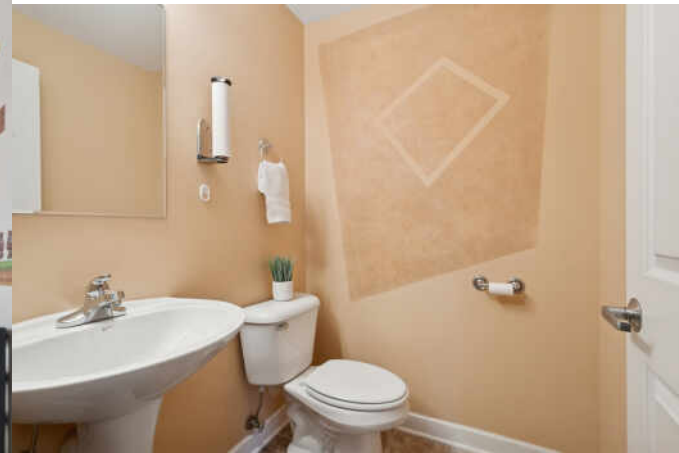
TAXES: 10,365.00

ASSESSMENTS: 489.00



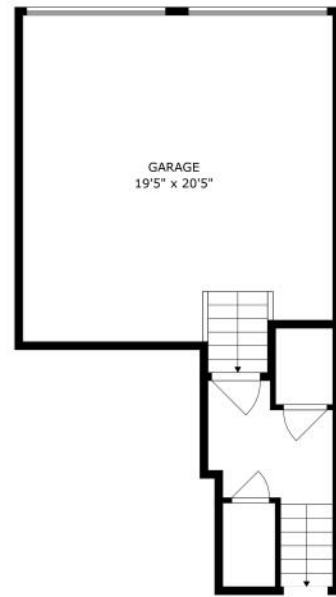




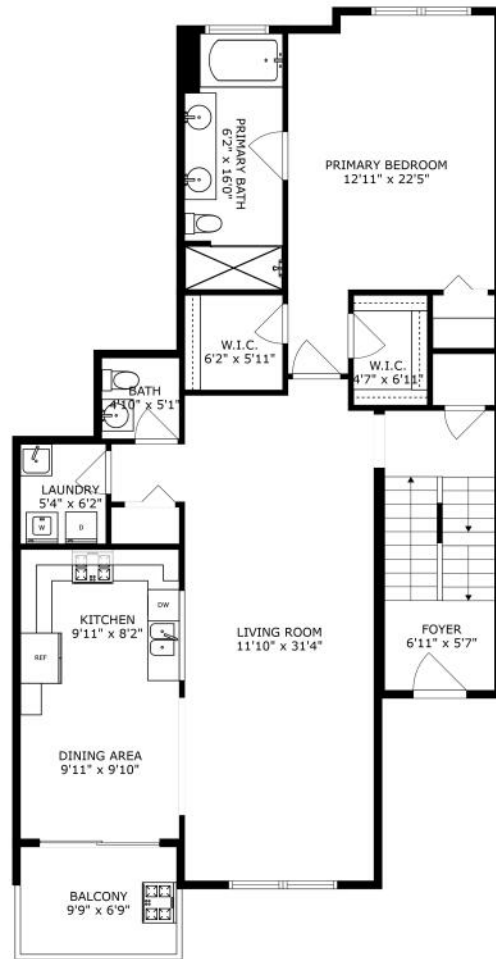








FLOOR 1



FLOOR 2



FLOOR 3

## NOTES



## TARA SKINNER

919-223-0982

847-832-0002

TARASKINNER@ATPROPERTIES.COM



All specifications, features, designs, price, assessments, taxes and materials are subject to change without notice. Depicted floor plans and architectural renderings are only an artist's impression.

