

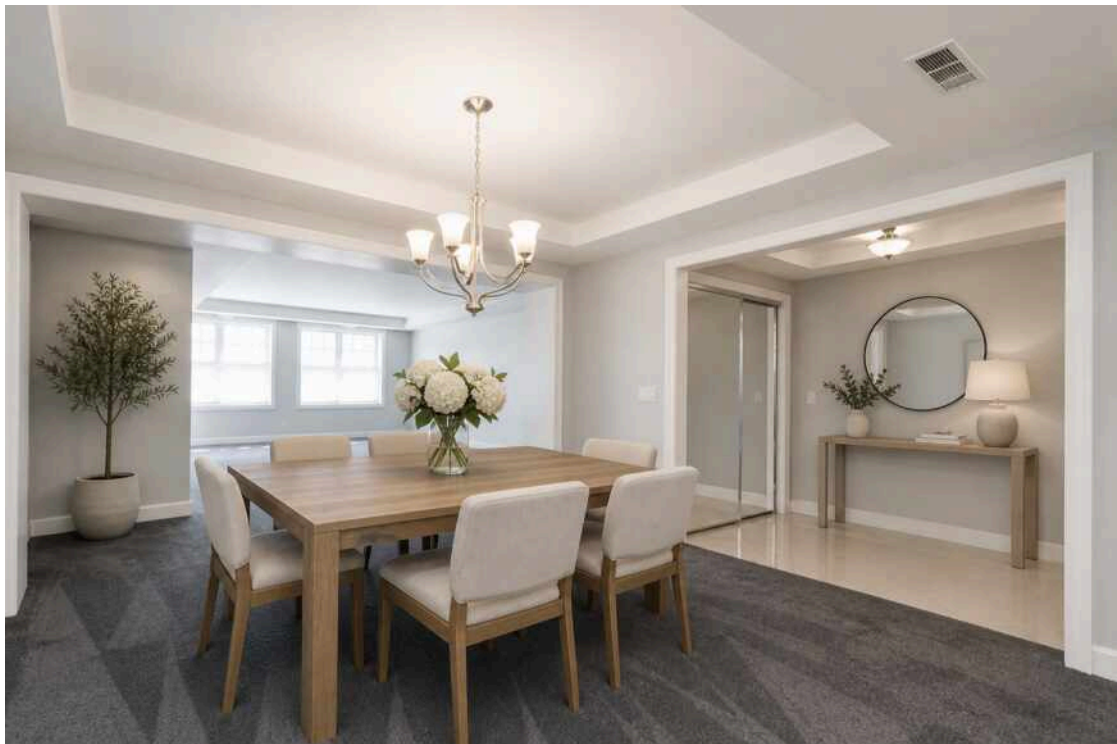
10 E BURLINGTON STREET #2J
RIVERSIDE



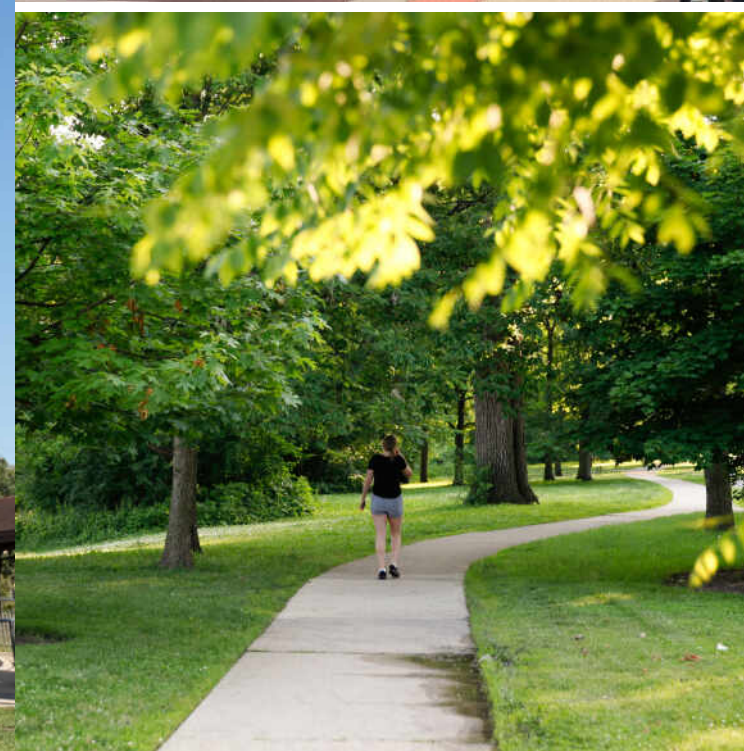


2 BEDROOM
2 BATH
TAXES: \$3,782
ASSESSMENTS: \$595 / MONTH

This Village Center location has sophisticated living ideally set within a well-appointed elevator building. This prime downtown location is ideally situated within steps of vibrant local restaurants, shopping, top-rated schools, library, parks & Riverside metra. A welcoming foyer with a spacious double-door closet opens to an airy open-concept layout featuring a bright living room, dining area and kitchen-designed for both everyday comfort and effortless entertaining. The kitchen offers beautiful cabinetry including a Multicolored LED back-lighted cabinet with a glass-front display for added character. The primary suite features a walk-in shower a generous walk-in closet while a second bedroom provides flexibility for guests or a home office plus a second full bath. Additional highlights include one underground parking space and the ease of low-maintenance living. Enjoy walkable lifestyle in classic village charm. Less than 5 minutes to Riverside Metra and approximately 30 minutes to Chicago from the Riverside Metra. The building also features a common deck on the 4th floor with panoramic views. Impressive.







RIVERSIDE IS CONSIDERED TO BE THE FIRST PLANNED COMMUNITY IN THE UNITED STATES.

Incorporated in 1875, the historically recognized village is noted for its expansive parkways, charming town center, and early 20th century architecture.

The Riverside Landscape Architecture District was designated a National Historic Landmark in 1970. To retain its original aesthetic charm, the village even maintains 379 antique-style gas street lanterns.

Residents take great pride in the community's history and architecture, which is on display through tours at the Riverside Historical Museum and the Riverside Water Tower. Homes include well-maintained 1920s bungalows, huge Victorians, and early 20th century mansions.

The village features several restaurants including some that have been recognized as among the best in the Chicago area. There are also several unique boutiques and stores selling antiques and Victorian house fixtures – a nod to the town's rich architectural history.

Riverside students attend District 96 schools including four elementary schools and one junior high school. High school students attend Riverside Brookfield High School, part of the Riverside-Brookfield Township School District 208.

With a train station along Metra's BNSF Railway, Riverside is a short commute to Chicago's Union Station.



PAT JICHA

(708) 651-0150

PATRICIAJICHA@ATPROPERTIES.COM