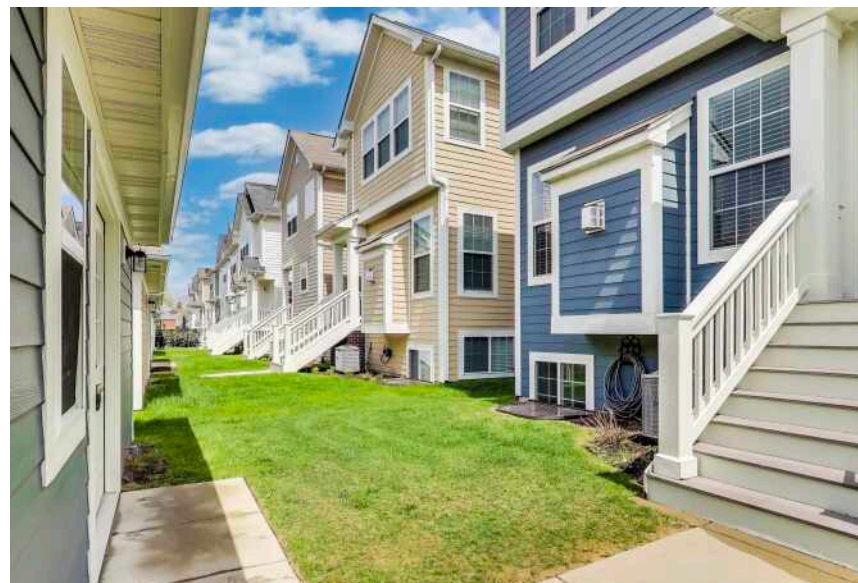


# 10 N DRYDEN PLACE

ARLINGTON HEIGHTS







#### ROOM DIMENSIONS

LIVING ROOM : 19' × 17'  
 DINING ROOM : 13' × 12'  
 KITCHEN : 14' × 14'  
 FAMILY ROOM : 20' × 18'  
 PRIMARY BEDROOM : 15' × 13'  
 SECOND BEDROOM : 13' × 11'  
 LOFT - 2ND FLOOR DEN : 15' × 13'  
 FOYER : 15' × 13'  
 2ND FLOOR LAUNDRY : 8' × 6'  
 UTILITY ROOM : 9' × 8'  
 PRIMARY WALK-IN CLOSET : 10' × 6'  
 BR 2 WALK-IN CLOSET : 5' × 4'

2 BEDROOM

3.1 BATH

TAXES: \$12506

## IN-TOWN SINGLE FAMILY - FUN LIFESTYLE LOCATION & DESIGN - BUILT 2016

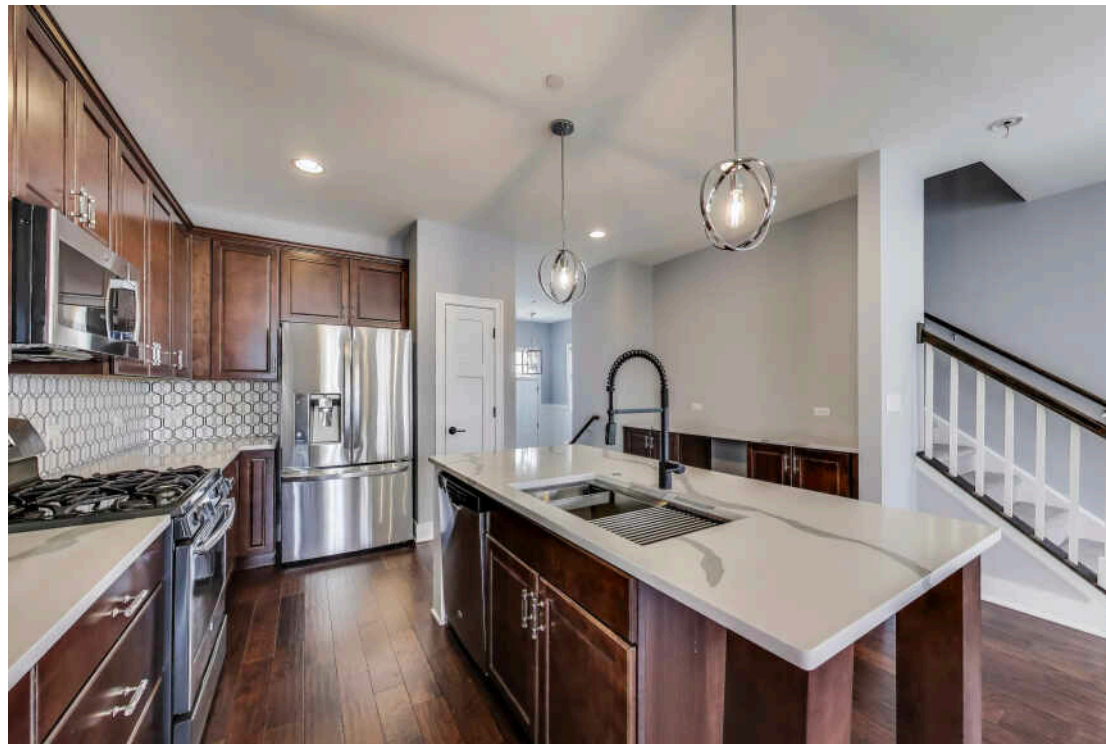
This IMMACULATE - like new (built 2016) Chelsea model detached home with 9 foot ceilings, engineered hardwood floors on main level, quality finishes and light fixtures throughout. Quartz Countertops in kitchen with stainless steel appliances and flex/Dining room is just off the kitchen in the front of the home - could make fo library or perfect office. The upper level offers master ensuite with full bath, walk-in glass shower, double sink vanity, large walk-in closet and convenient laundry room on 2nd floor. This well designed home delivers approximately 2300 finished square feet, fully finished English lower level with very large family room, 3rd full bath, large storage closet & raised - easy access concrete crawl space off utility room for great storage. 2+ car detached garage off asphalt alley/street like, has french door opening to cozy yard. Tenant is responsible for all utilities and easy lawn/snow care. Rental insurance is also required. One dog allowed up to 50 pounds with additional pet deposit. Ideal walking location to all: Metra train, restaurants, grocery store, parks, pool and all excellent schools

- 9 Foot Ceilings - Engineered Wood Floors on Main Level
- 2nd Floor Laundry Room - Large Loft Room with Closet
- Full Lower Level - Raised Concrete Crawl Storage

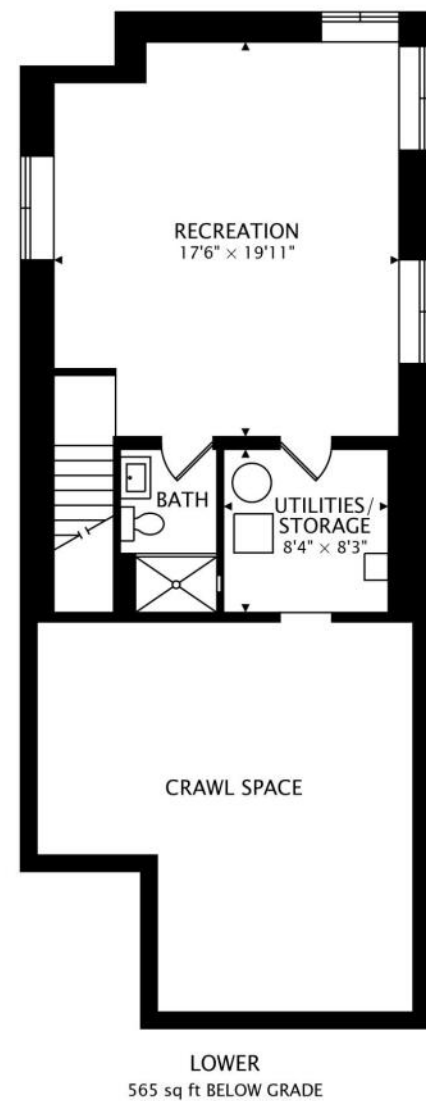
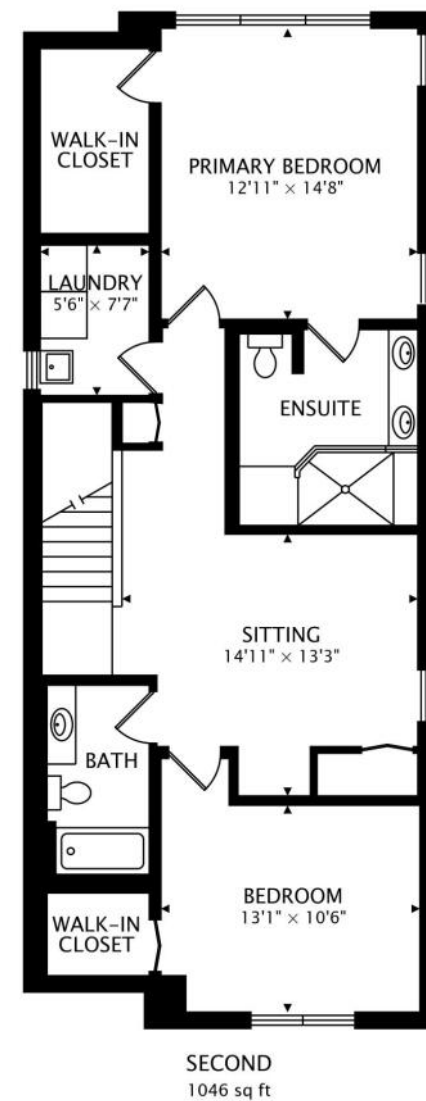
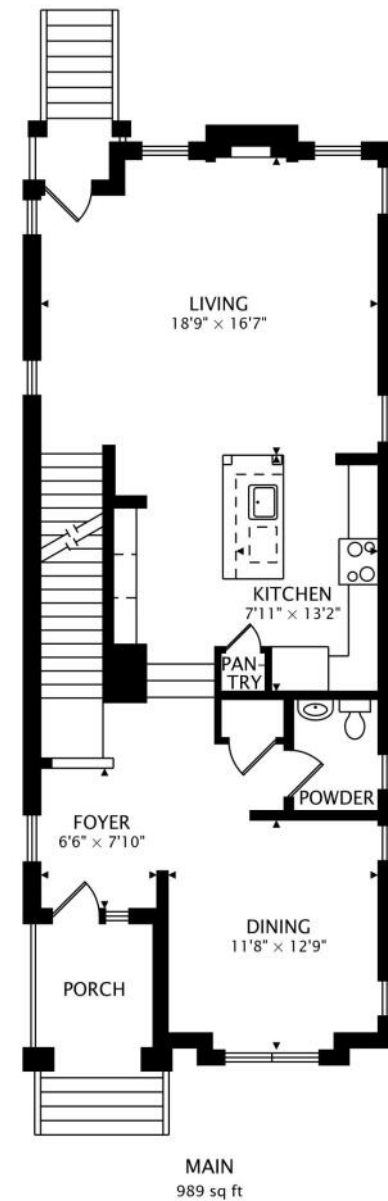
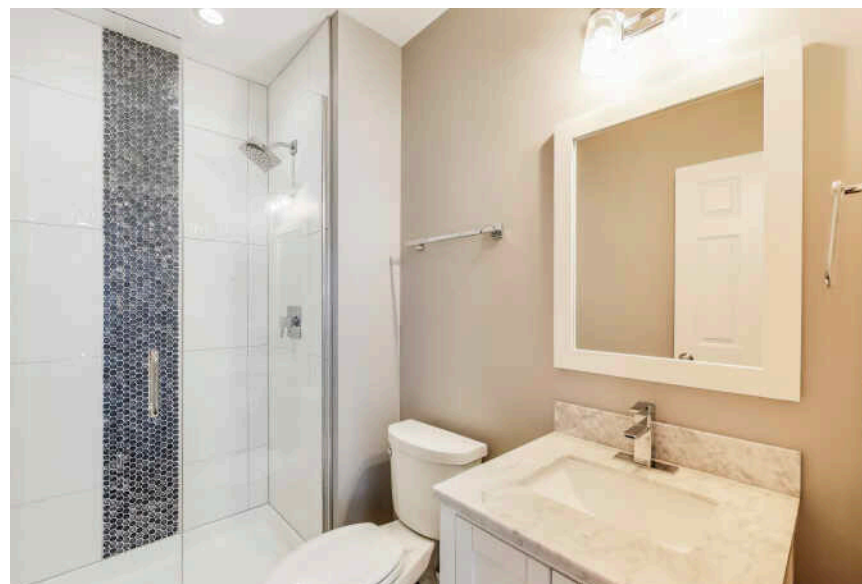
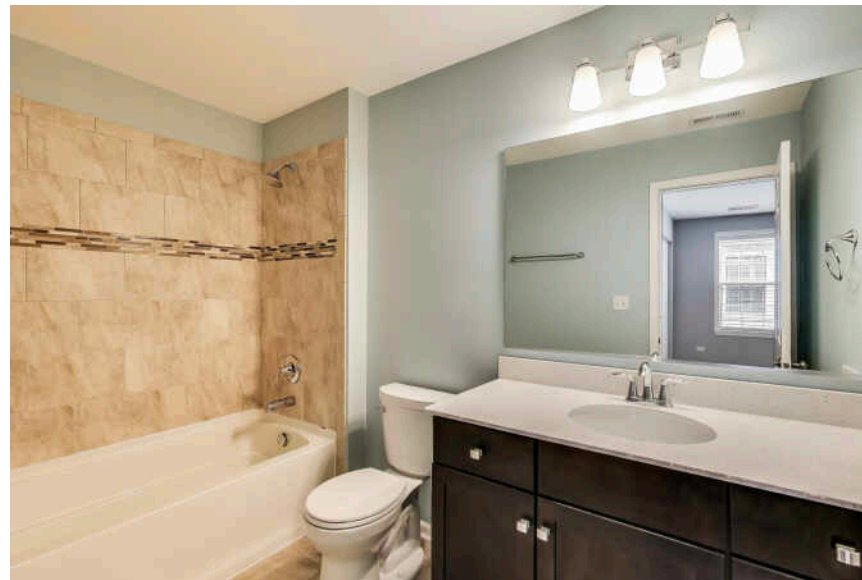


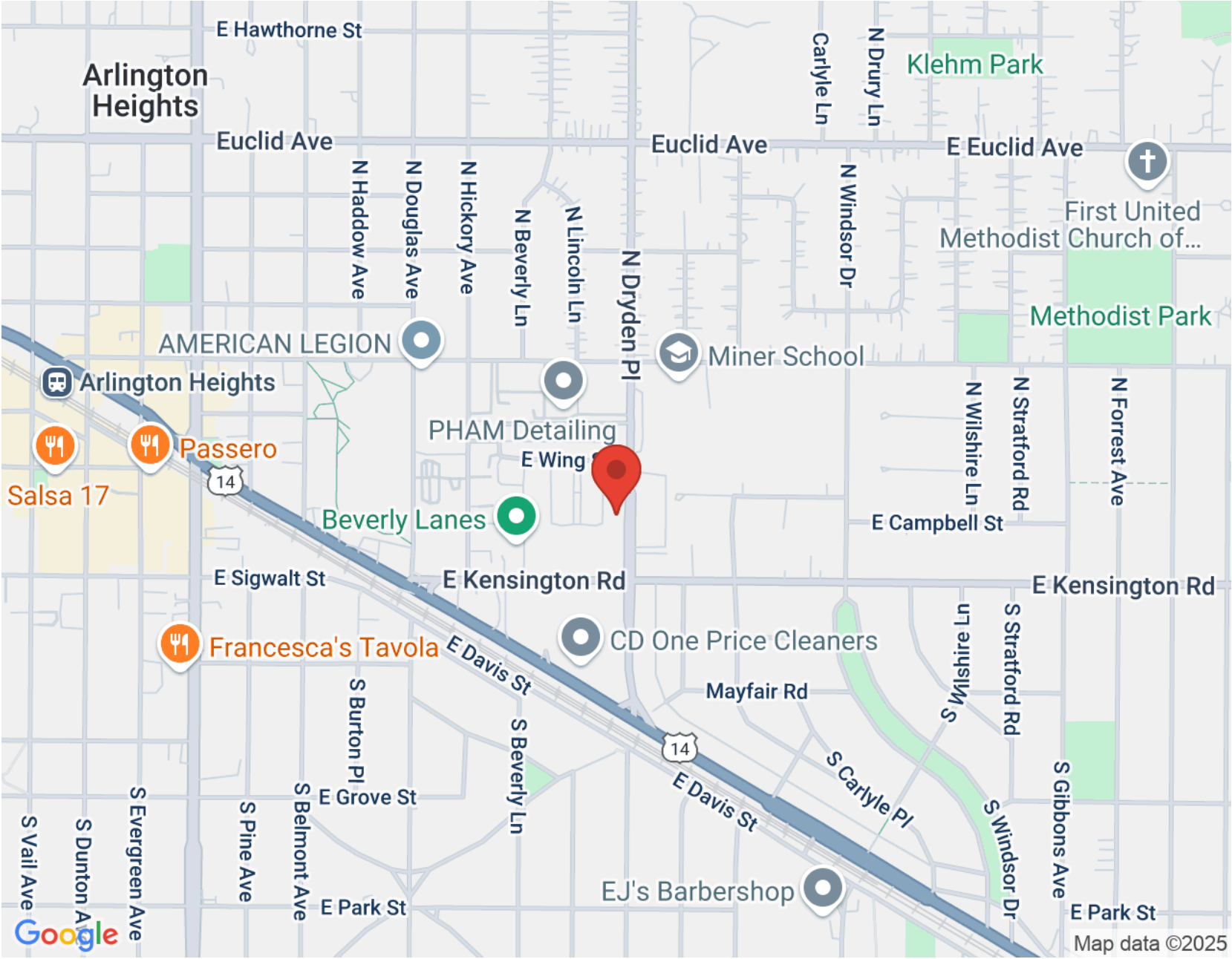












NOTES \_\_\_\_\_

\_\_\_\_\_

\_\_\_\_\_

\_\_\_\_\_

\_\_\_\_\_

\_\_\_\_\_

\_\_\_\_\_

\_\_\_\_\_

\_\_\_\_\_

\_\_\_\_\_

\_\_\_\_\_



DIRECT: (847) 456-8860  
MAIN OFFICE: 847-797-0200  
MARKKLOSS@ATPROPERTIES.COM  
MARK.KLOSS.COM



All specifications, features, designs, price, assessments, taxes and materials are subject to change without notice. Depicted floor plans and architectural renderings are only an artist's impression.

