

11000 NELSON STREET
WESTCHESTER





ROOM DIMENSIONS

LIVING ROOM : 19.4' × 13.11'

DINING ROOM : 10.11' × 12.1'

KITCHEN : 14.5' × 11.9'

FAMILY ROOM : 14.11' × 17.8'

PRIMARY BEDROOM : 14.1' × 12.2'

SECOND BEDROOM : 11.9' × 15.7'

THIRD BEDROOM : 10.5' × 11.4'

FOURTH BEDROOM : 14.11' × 11.9'

REC ROOM : 22.7' × 14.5'

STORAGE : 12' × 13'

LAUNDRY ROOM : 12' × 15'

WELCOME TO WESTCHESTER!

Solid, Baltis Built 4 bedroom/3 full bath in desirable Mayfair Park area of South Westchester..Perfectly warm and well cared for home offers 4 levels of living! You'll be pleasantly surprised by the layout! Fabulous curb appeal, professionally landscaped..Main level is open and inviting with hardwood floors, large windows bring in loads of light into the Living Room/Dining room combo. Eat-in kitchen with all SS appliances. Second level~Primary bedroom with ensuite bath along with 2 additional good sized bedrooms and full bath hardwood flooring throughout. Two steps down from the kitchen introduces you to the cozy family room with wood burning fireplace and beautiful built-in bookcases. There is also a full bath and 4th bedroom on this lower level ~absolutely fabulous opportunity for a possible in law arrangement.. side door to the left opens to a dog run and down the hall to the right side door opens to concrete driveway leading to paver brick patio oasis in backyard and huge 2.5 car BRICK garage. Don't forget about the walkout basement which is finished and offers tons of storage, a laundry room, workroom and huge concreted crawl. Home has been loved and cared for..great location boasts 7 mins to Western Springs train station, 8 mins to Oak Brook Mall, access to expressways, walk to Mariano's, Mayfair Park and Fitness Center and 20 minutes to the City.

- South Westchester Mayfair Park area

- 4 Bedrooms

- 3 Full Baths

- Huge 2.5 Car Brick Garage

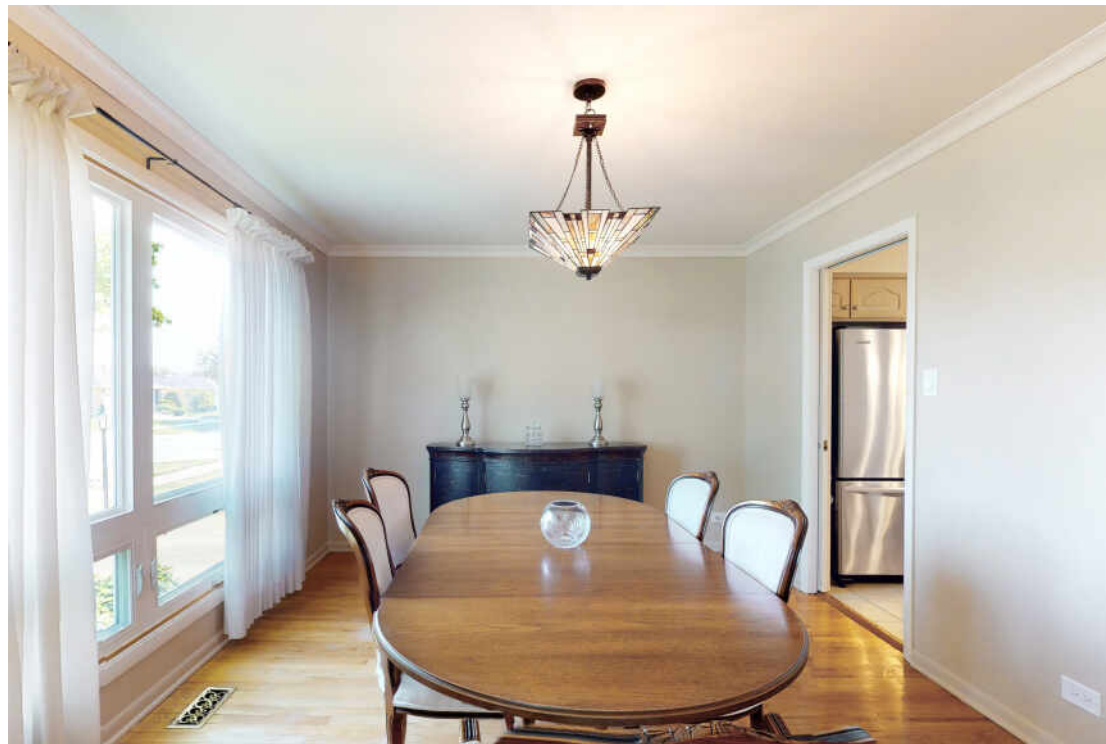
- Perfect In law Arrangement

- Primary Ensuite Bedroom

- Concreted crawl

- Finished Walkout Basement

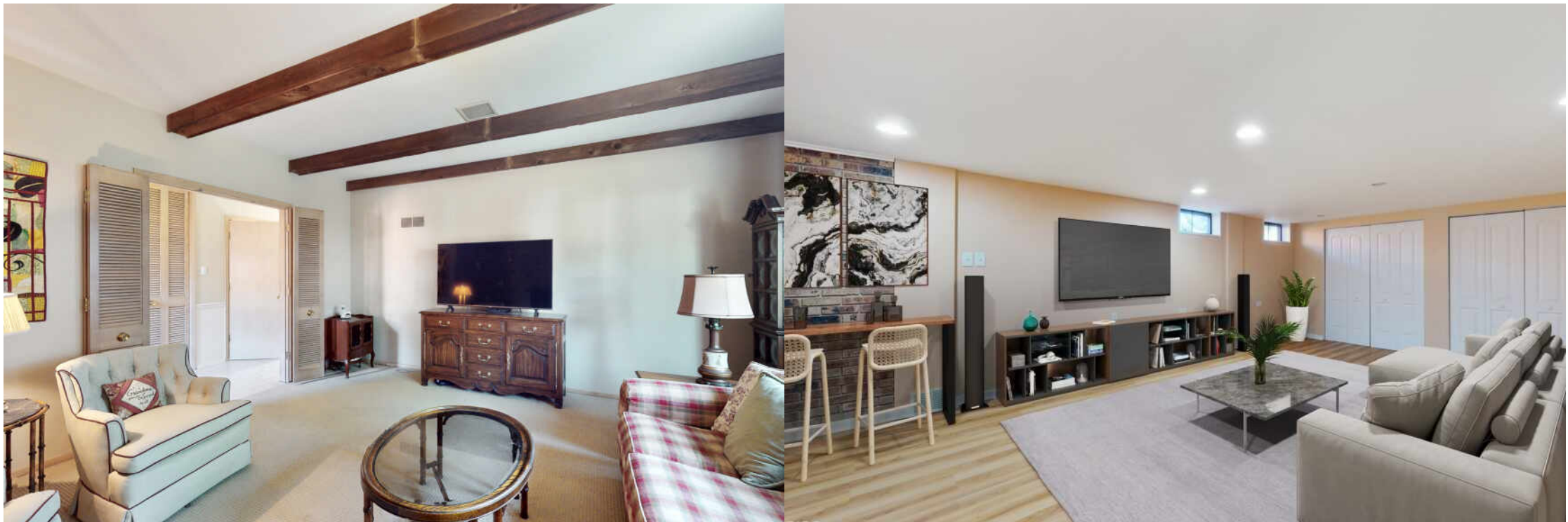
- Wood burning Fireplace in Family Room

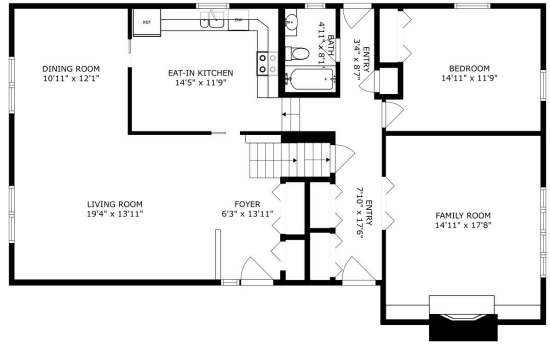


4 BEDROOM

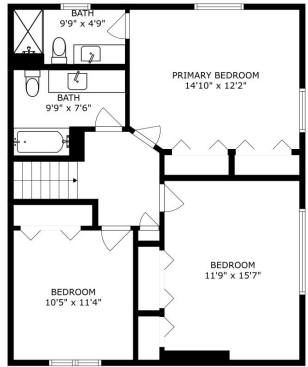
3 BATH

TAXES: 5990.60

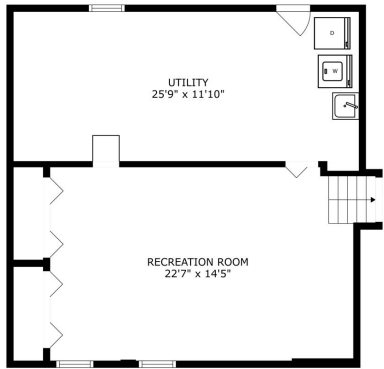




SIZES AND DIMENSIONS ARE APPROXIMATE, ACTUAL MAY VARY

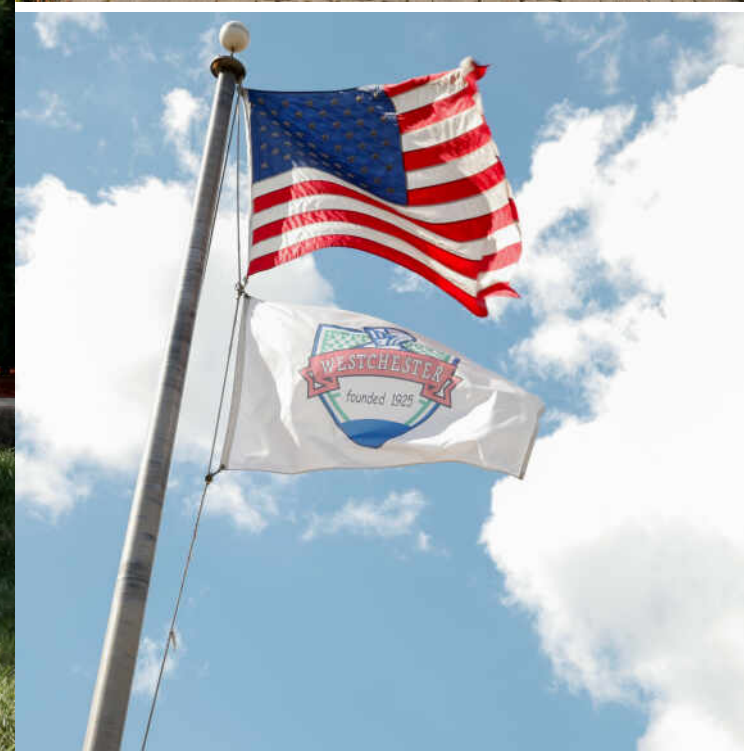


SIZES AND DIMENSIONS ARE APPROXIMATE, ACTUAL MAY VARY



SIZES AND DIMENSIONS ARE APPROXIMATE, ACTUAL MAY VARY



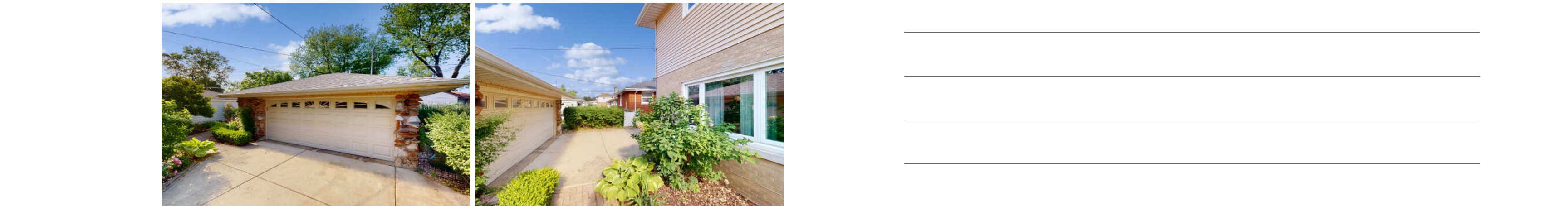


THE VILLAGE OF **WESTCHESTER** WAS FARMLAND UNTIL 1924, WHEN ITS FOUNDER PURCHASED THE LAND TO DEVELOP AN ENGLISH-STYLED TOWN.

Today the village boasts local restaurants and shops, recreation centers, and parks. Westchester is also home to the Westbrook Corporate Center, which includes five 10-story towers with more than one million square feet of office space. Nearly all of the open land in the village has been consumed by expansion except for the 85-acre Wolf Road Prairie.

The small community comes together and hosts several annual events and activities including a Fourth of July parade and fireworks, BBQ Block Party, and Fall Festival at the Fountain.

Westchester offers access to downtown Chicago via the Eisenhower Expressway and provides Pace bus service to the Forest Park Transit Center.



NOTES

[illegible]



JENNIFER CITRO

CELL (708) 408-9100

OFFICE (708) 246-0500

JENCITRO@ATPROPERTIES.COM

4472 LAWN AVE. WESTERN SPRINGS, IL 60558

JENNIFER *JC* CITRO



CHRISTIE'S
INTERNATIONAL REAL ESTATE

11000NELSON.INFO