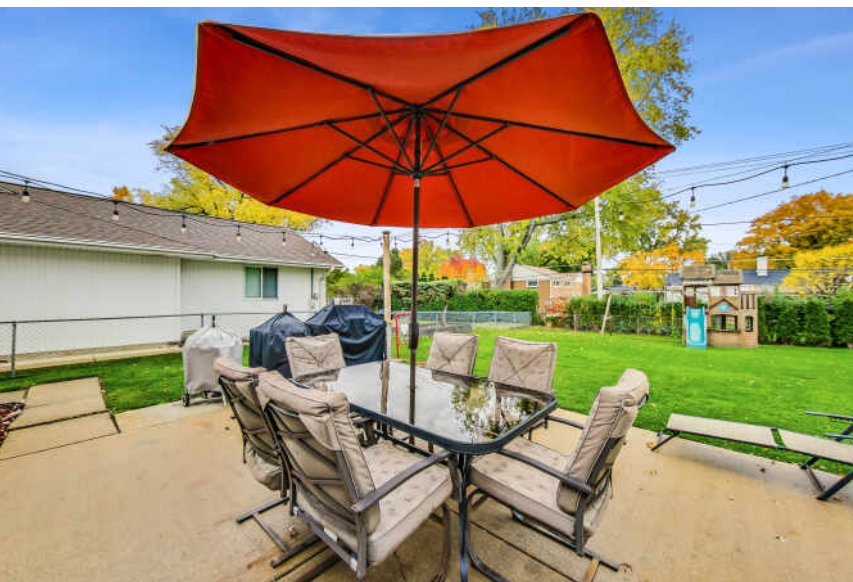


1101 W PENDLETON PLACE
MOUNT PROSPECT





ROOM DIMENSIONS
LIVING/FAMILY ROOM : 22' x 12'
DINING ROOM : 15' x 10'
KITCHEN : 15' x 9'
FAMILY/RECREATION RM : 16' x 14'
LAUNDRY/UTILITY RM : 11' x 8'
FOYER : 12' x 5'
BEDROOM 1 : 13' x 10'
BEDROOM 2 : 12' x 11'

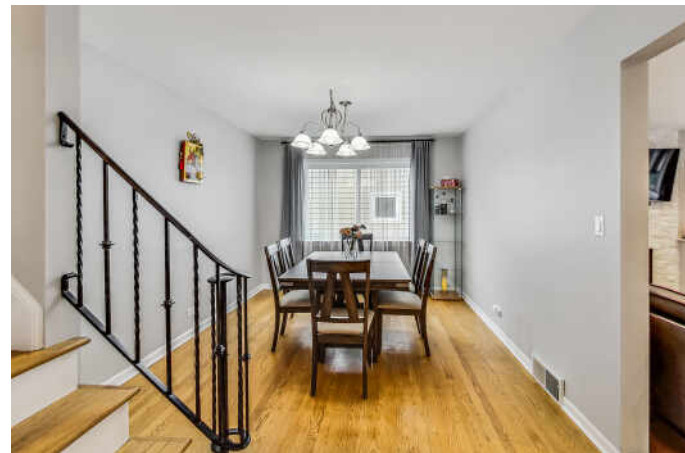
2 BEDROOM
2 BATH
TAXES: \$5,376

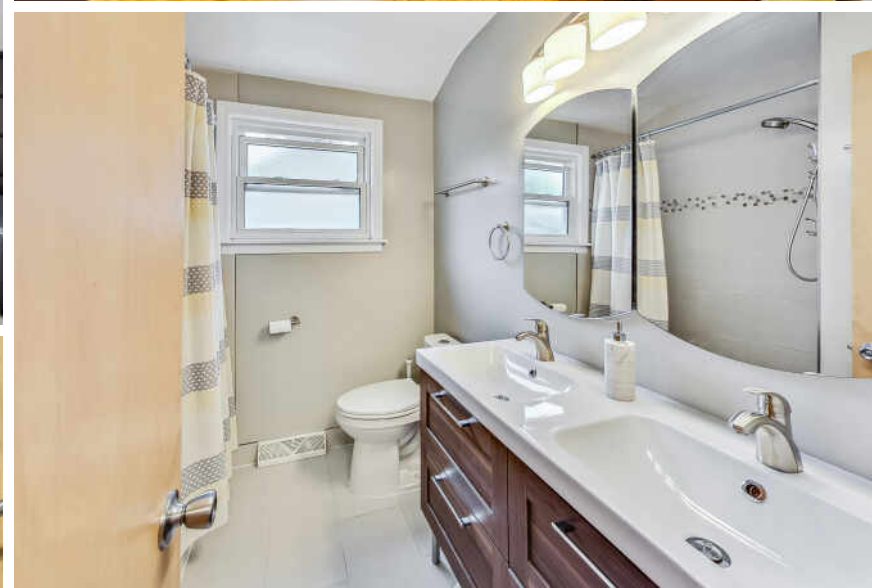
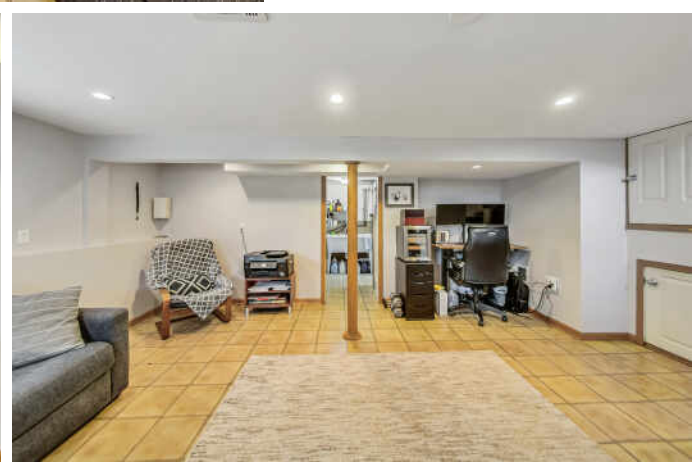
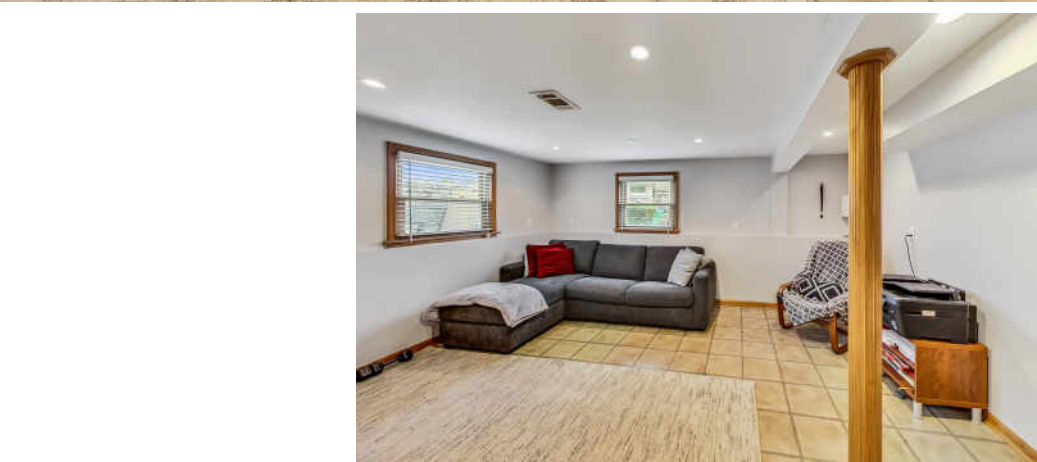
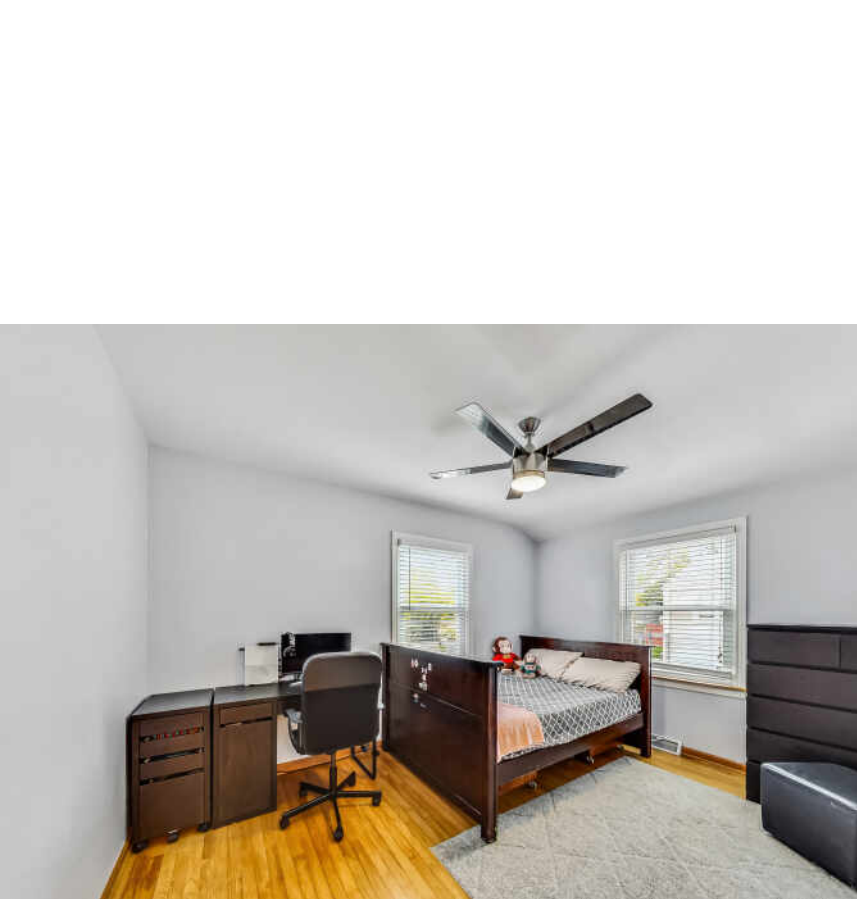
WE GO PARK - JUST NORTH OF MT PROSPECT GOLF COURSE

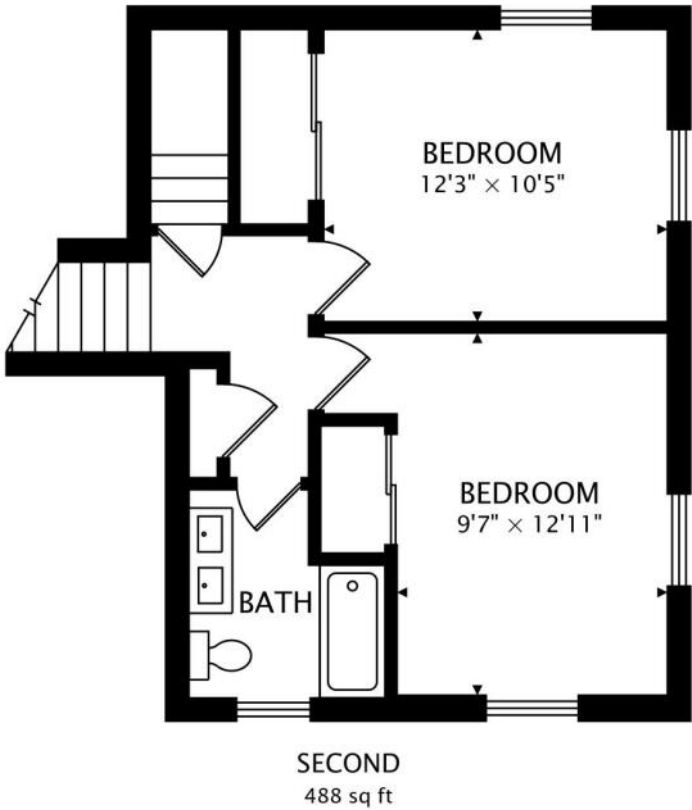
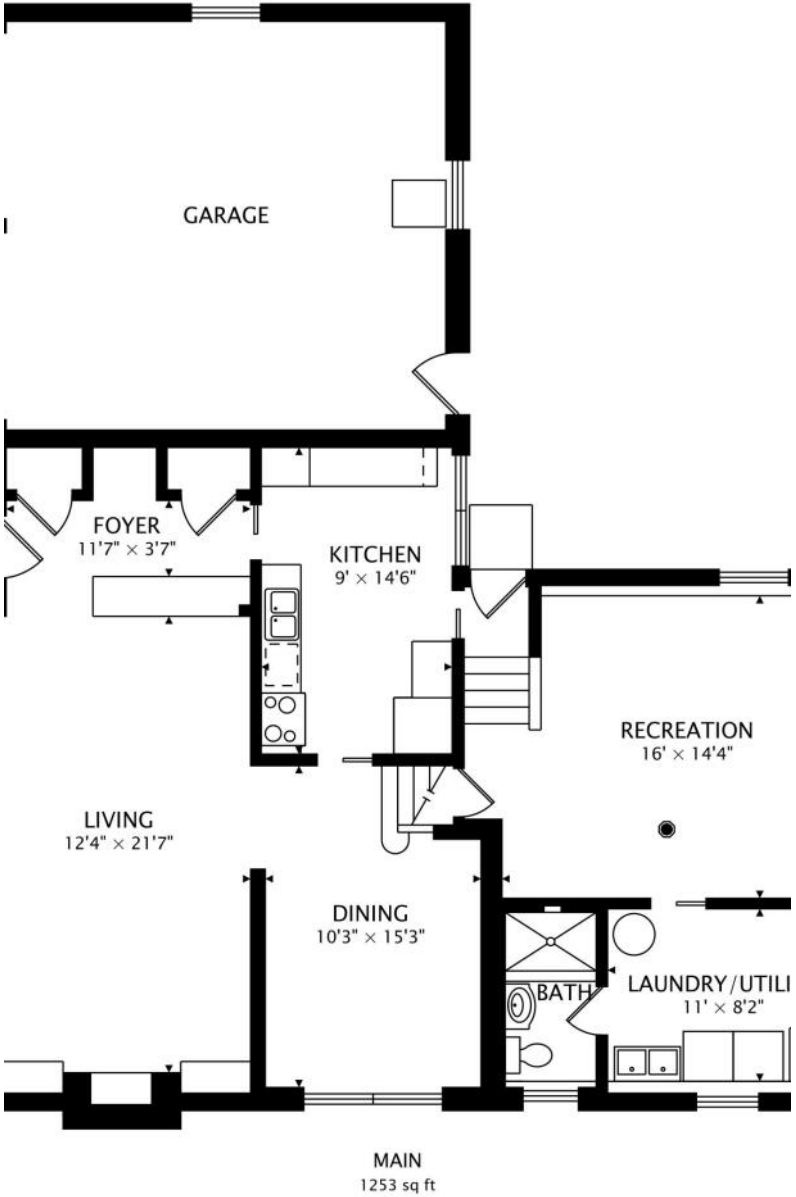
Affordable We-Go Park residence with 2+ attached garage located on a fun block of homes - just north of the Mt Prospect Golf Course - just a 5 iron away! Through hallway welcomes you and your guests - open plan with family room like living room with beautiful fireplace - newer recessed lighting - refinished hardwood floors - all highlighted by 12 foot bow bay window overlooking front yard. Separate dining room space is nice size - flexible space too. Recently updated kitchen - great cabinet space and views to large partially fenced in backyard. Step down to family room with office nook - large utility room and 2nd full bathroom. Both bedrooms and newly remodeled full bathroom with double sink are on upper level. Extra storage on 2nd floor in closet with steps to attic area. Sellers have paid plans for expansion but found their new home just a block away - happy not to leave their neighbors and friends. New furnace & central air installed 2019. Patio, large storage shed and playset in wonderful backyard. 3 car wide driveway with parking pad for all the fun & "toys". Exclude Goalrilla Basketball System - base will remain. Walkable distance to downtown Mt Prospect fun/Metra or lunch at the golf course clubhouse. Lions Park GS, Lincoln Middle & Prospect HS location.

- 2+ Attached Garage
- Partially Fenced Large Backyard
- Concrete Patio - Concrete Driveway











DIRECT: (847) 456-8860

MAIN OFFICE: 847-797-0200

MARKKLOSS@ATPROPERTIES.COM

MARK.KLOSS.COM

MARK *MK* KLOSS



CHRISTIE'S
INTERNATIONAL REAL ESTATE