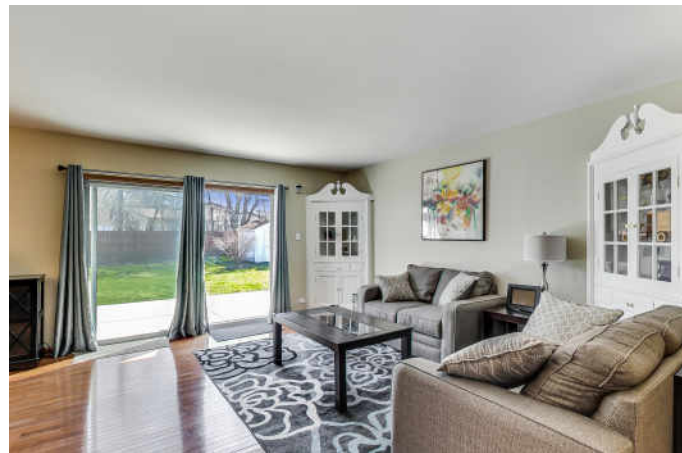


1105 N CRABTREE LANE
MOUNT PROSPECT





ROOM DIMENSIONS

LIVING ROOM : 16' × 18'
 FAMILY ROOM : 13' × 22'
 DINING ROOM : 10' × 10'
 KITCHEN : 9' × 16'
 PRIMARY BEDROOM : 11' × 15'
 SECOND BEDROOM : 12' × 13'
 THIRD BEDROOM : 10' × 11'
 OFFICE : 8' × 12'
 FOYER : 5' × 16'
 LAUNDRY ROOM : 7' × 10'
 BACKYARD PATIO : 11' × 32'

Location, location, location ... and a great house! This beautifully maintained home is an entertainment paradise inside & out. Move right in! The open floor plan of this split-level home offers, a wonderful oversized outside patio with wooded & privacy landscape which makes this a treasure to enjoy. This light-filled, 3-bedroom home offers updated kitchen with newer appliances + a newly installed dishwasher, updated bathrooms, freshly painted throughout and hardwood floors on the main level. There is so much to list. Plan your visit to see for yourself. The home is an amazing value & priced to sell. Don't miss it.

- Newly remodeled kitchen with upgraded appliances; newer stove/oven, microwave, NEW dishwasher, sink & disposal, custom maple cabinets.

- New closet systems added to bedrooms.

- Updated bathrooms with new vanities, sinks & fixtures.

- NEST Smart Thermostat installed for energy efficiency.

- Foundation crack repair (Perma-Seal with transferrable warranty) - 2017

- Sump Pump with backup - 4 years old

- Newer water heater - 2017

- New chimney liner - 2020

- Brick tuckpointing - 2020

- Fire pit & new cement patio added.

- Roof replaced in 2008.

- HVAC system replaced in 2008.

- AC replaced in 2011.

- Vinyl, Thermopane windows replaced in 2015.

- Fully fenced yard.

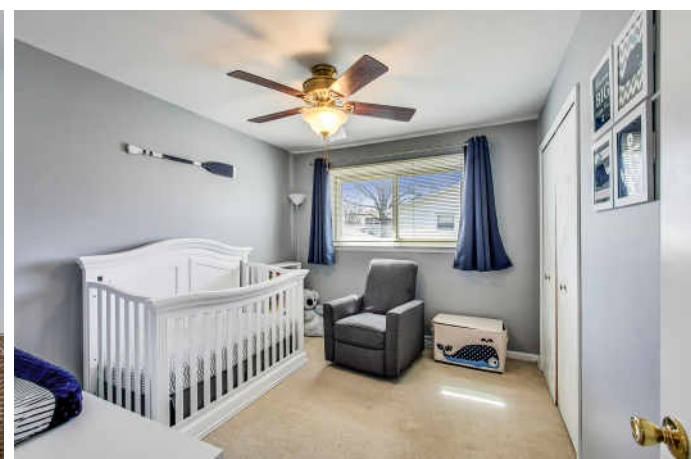
- Hersey High School District

3 BEDROOM

2 BATH

TAXES: \$8,495.31

ASSESSMENTS: \$0







THE VILLAGE OF **MOUNT PROSPECT** IS A
NATIONALLY-ACCLAIMED COMMUNITY
WITH SMALL-TOWN CHARM AND TREE-
LINED STREETS.

Once rated one of the “Top 50 Places to Live” in the United States by *Money* magazine, Mount Prospect is known for its great housing, a tight-knit community, and outstanding services.

The village is 20 miles northwest of downtown Chicago and boasts approximately 400 acres of parks and recreation facilities, including four park districts. Residents enjoy an outdoor wave pool, two golf courses, a miniature golf course, outdoor skating rinks, playgrounds, sports fields, and tennis courts.

The recently renovated downtown features brick-paved streetscapes, wrought-iron lamp posts, and colorful flowers and landscaping. It’s also the site of row houses, townhomes, and condominiums as well as restaurants, entertainment, retail, spas, and service providers. Every summer, the Mount Prospect Chamber of Commerce invites residents and guests to enjoy music, food, and fun at the annual Mount Prospect Downtown Block Party. Fridays on the Green help residents take advantage of the warm weather with free outdoor concerts throughout the summer.

Residents have access to public transportation via Metra and Pace.



NOTES _____



CHERYLL SULLIVAN

(847) 431-3685

CSULLIVAN@ATPROPERTIES.COM

TOP PRODUCER SINCE 2012



1105NCRABTREELANE.INFO