

1106 HOHLFELDER ROAD GLENCOE



@properties | CHRISTIE'S
INTERNATIONAL REAL ESTATE

LP LUXURY
PORTFOLIO
INTERNATIONAL



PHYLLIS BISCEGLIE BROKER

708.997.0164 mobile
312.682.8500 office
phyllis@atproperties.com

THE
SERGIO & BANKS
GROUP

1106 HOHLFELDER ROAD • GLENCOE





1106 HOHLFELDER ROAD

FEATURES

Welcome to 1106 Hohlfelder Road. Another exquisite addition to the North Shore Signature Collection. This new construction Glencoe residence is ready for occupancy. This is not just a house it's a home. From the moment you walk in you feel a soothing , peaceful, and tranquil vibe. This home showcases, serene modern finishes and sophistication. This Home offers wide plank oak wood flooring, high ceilings throughout , large custom European windows and distinctive custom millwork. The chefs dream kitchen, boast custom cabinetry, quartzite stone countertops, smart home connect Thermador appliances and eloquently appointed lighting . The spacious living room showcases custom gas fireplace, large windows with an abundance of natural light. The private dining room is equally as bright and great for gatherings. First floor, mudroom, dog wash and en-suite bedroom. The 2nd floor has four bedrooms, Jack and Jill full bath and laundry room with double front load washer and dryers. The primary suite is a tranquil retreat with a cozy fireplace, spa like bath and amazing walk in custom closet . The lower level offers plenty of natural light with high ceilings, heated flooring, fitness room, custom home sauna, and an additional en suite bedroom. The large entertainment room is outfitted with a wet bar and Stone wrapped fireplace. The lower level leads right to the homes backyard oasis. This includes a heated inground pool, beautiful pergola, outdoor kitchen , raised hardscape patio and ample green space and lounge area. Additional home features include a heated front walkway and driveway, two car attached heated garage, central VAC system, surround sound, speakers, sprinkler system.



PHYLLIS BISCEGLIE BROKER

708.997.0164 mobile
312.682.8500 office

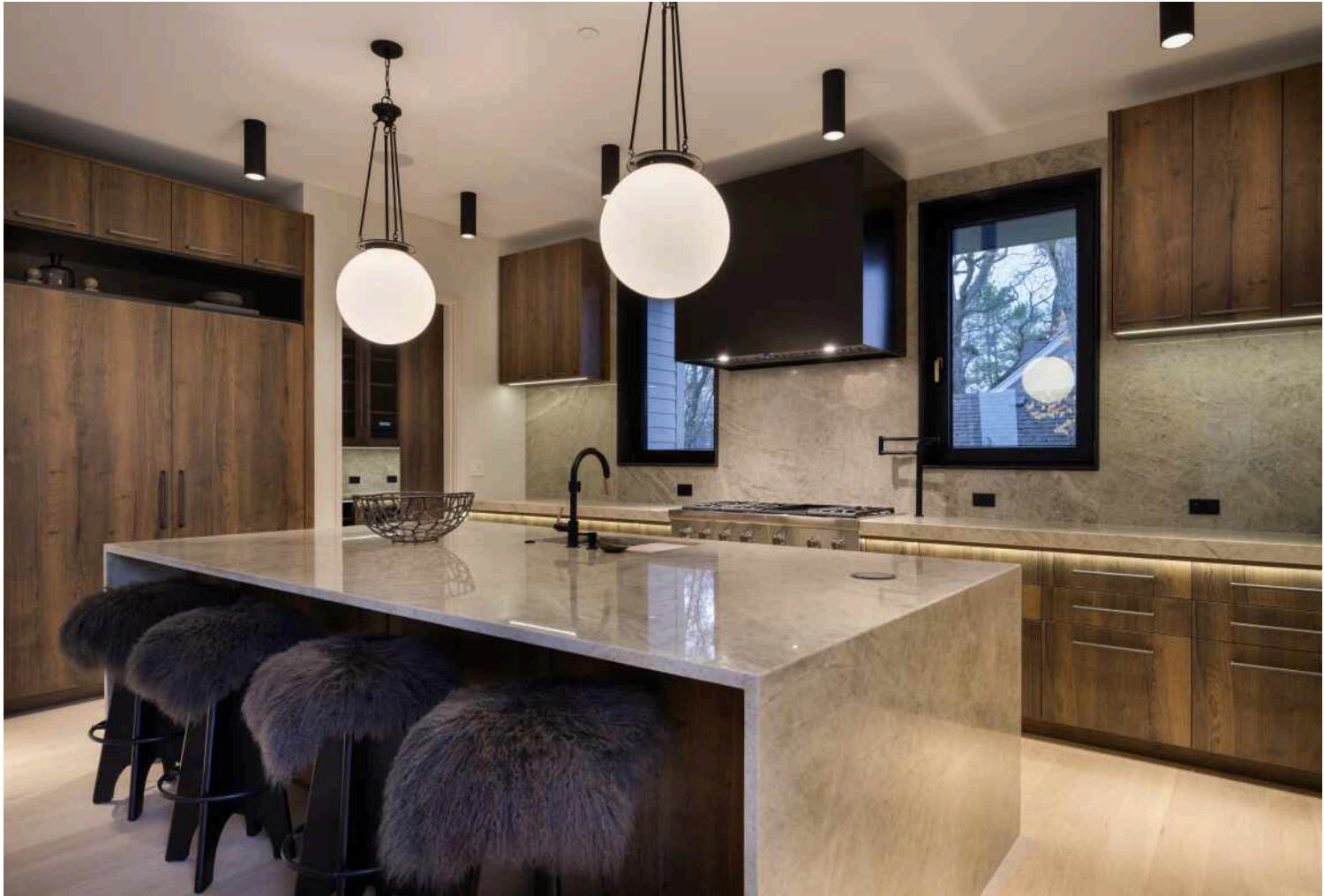
phyllis@atproperties.com

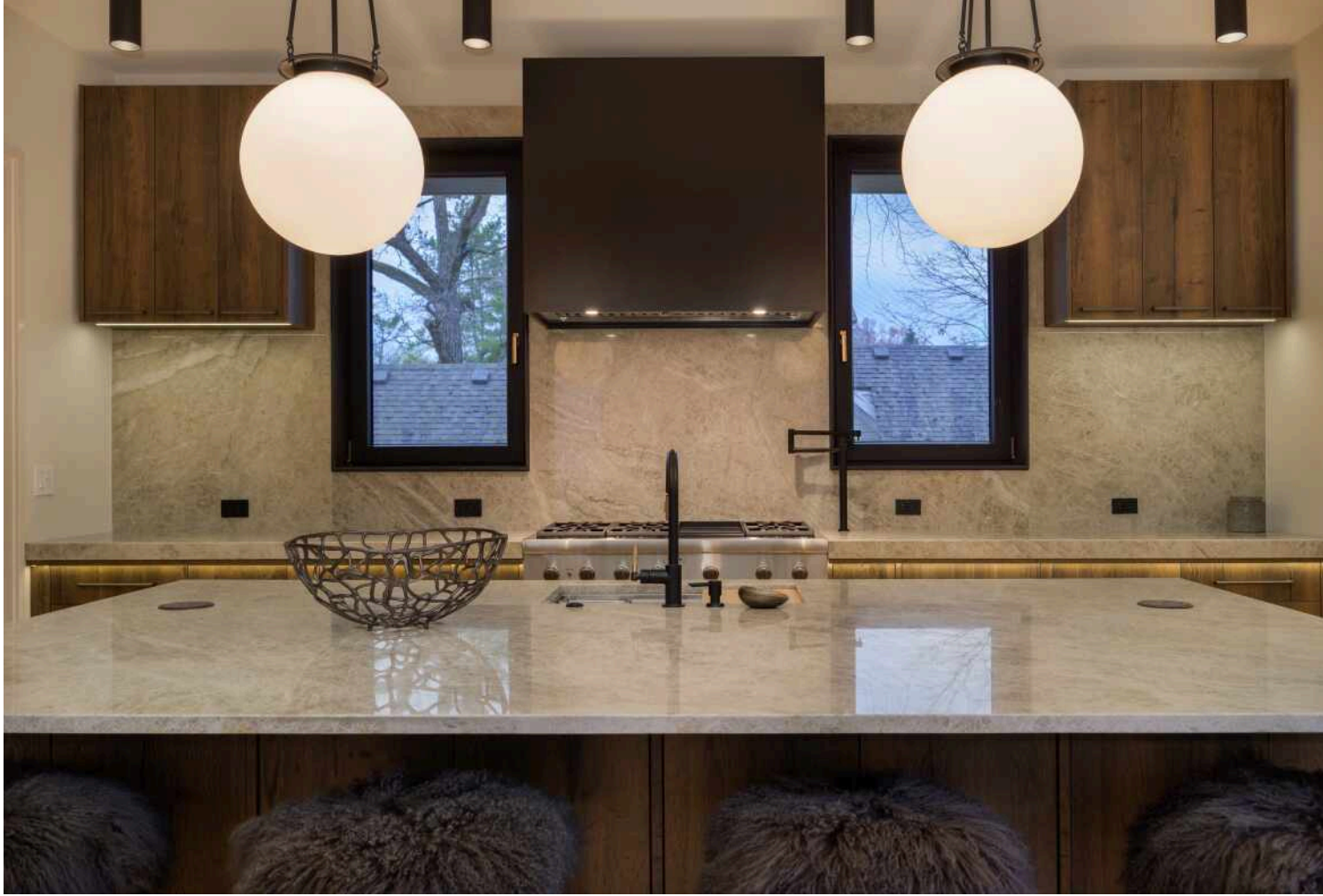
THE
SERGIO & BANKS
GROUP























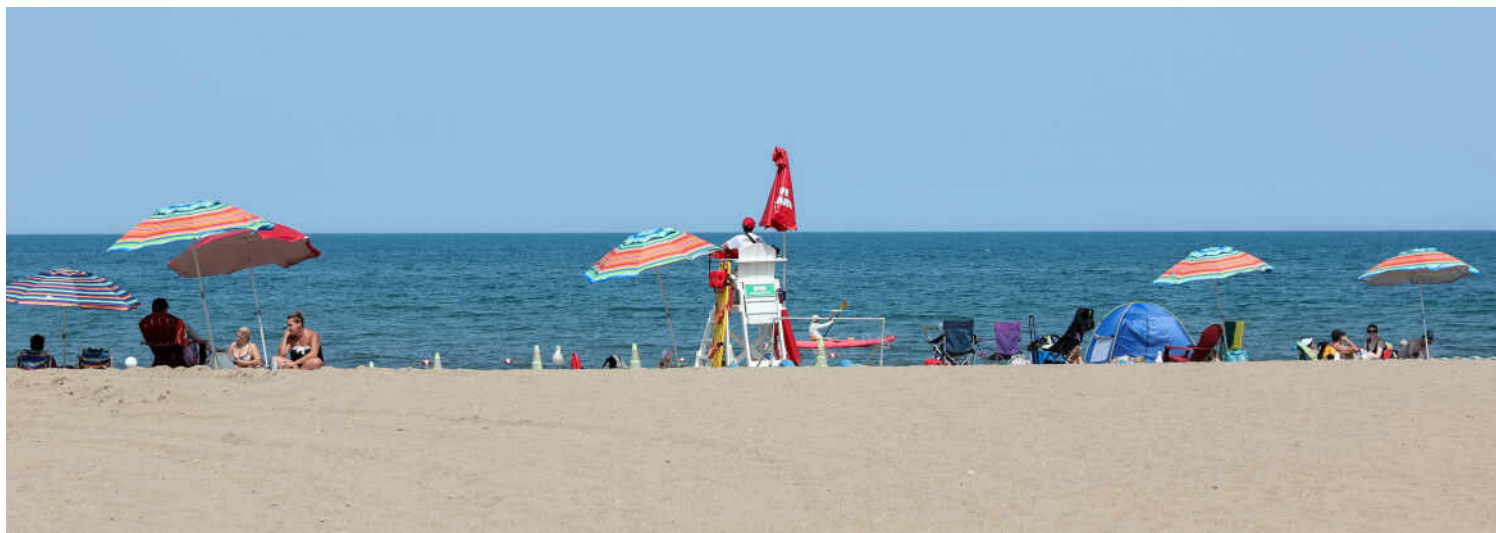












WITH VAST STRETCHES OF RAVINES, ABUNDANT PARKS, AND A CHARMING DOWNTOWN DISTRICT, THERE ARE PLENTY OF REASONS TO APPRECIATE THE IDYLIC LAKEFRONT COMMUNITY OF **GLENCOE**.

Locals love the community's charming downtown, where they can explore a variety of specialty shops and upscale retailers. Attractions such as the world-class Chicago Botanic Garden happen to be right in their backyard.

Comprised of traditional and contemporary homes in a range of prices, Glencoe features beachfront mansions, architecturally significant mid-century modern homes, new construction, and a mix of townhomes and condominiums. The village's downtown is in close proximity to many of Glencoe's neighborhoods and offers an array of eateries and upscale boutiques.

During the summer, residents can play 18 holes at the community's public golf course or take advantage of boat rentals, sailing lessons, and volleyball at Glencoe Beach. Then, of course, there are the amenities that can be enjoyed year-round, from the renowned Writers Theatre and public library to the Takiff Center, which has a gymnasium, fitness studios, conference activity rooms, and more.

Glencoe is also home to the Chicago Botanic Garden – a breathtaking attraction with gardens, special events, and horticulture classes. Additionally, a Metra station in town makes for an easy commute to the city and New Trier High School.

