

1109 TERRACE LANE
GLENVIEW



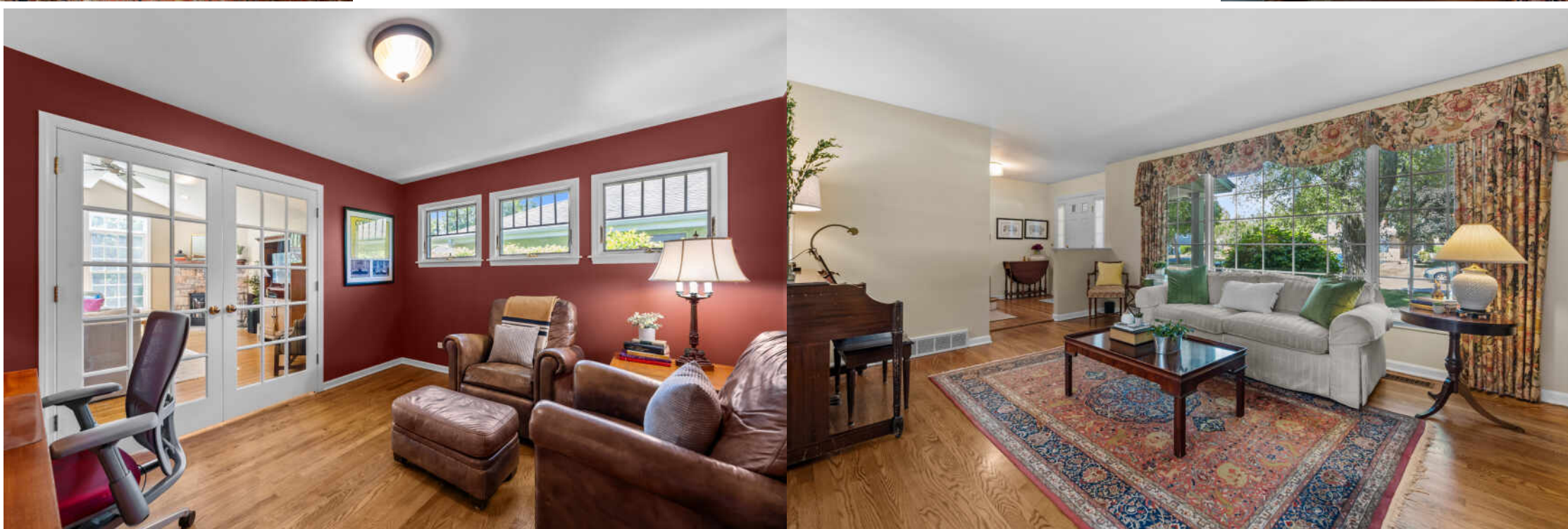


4 BEDROOM
2.1 BATH

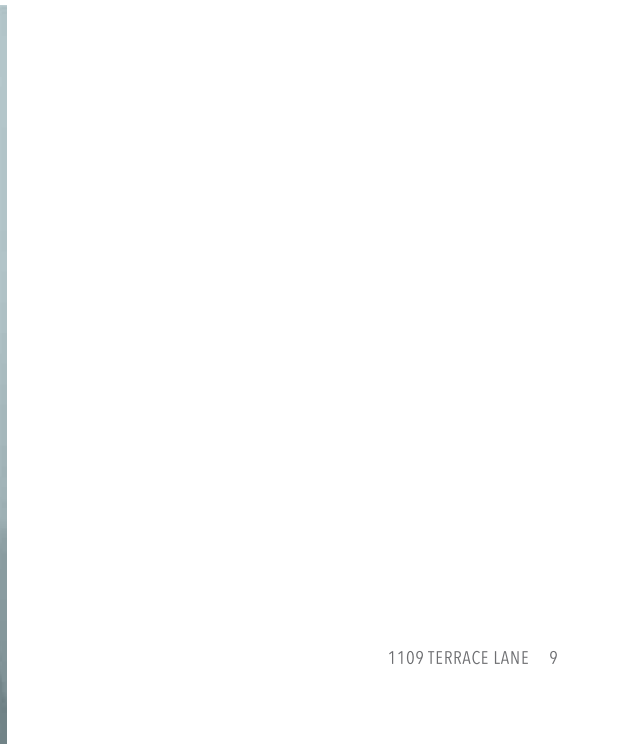
Welcome to 1109 Terrace Lane, a spacious 4-bedroom colonial perfectly located on a quiet side street, backing up to a large park/playing fields, and in award-winning school districts 34/225!

Expanded with a first-floor addition, the home offers a spacious main floor that includes an updated eat-in kitchen; formal living and dining room; a large family room with vaulted ceiling, a wall of East-facing windows, and wood-burning fireplace; and a convenient main-floor office.

Four bedrooms up, including a private Primary Suite with walk-in closet. Partially finished basement. Loads of storage. Attached 2-car garage. GORGEOUS private back yard. Brand new roof - May 2026! This one won't last.





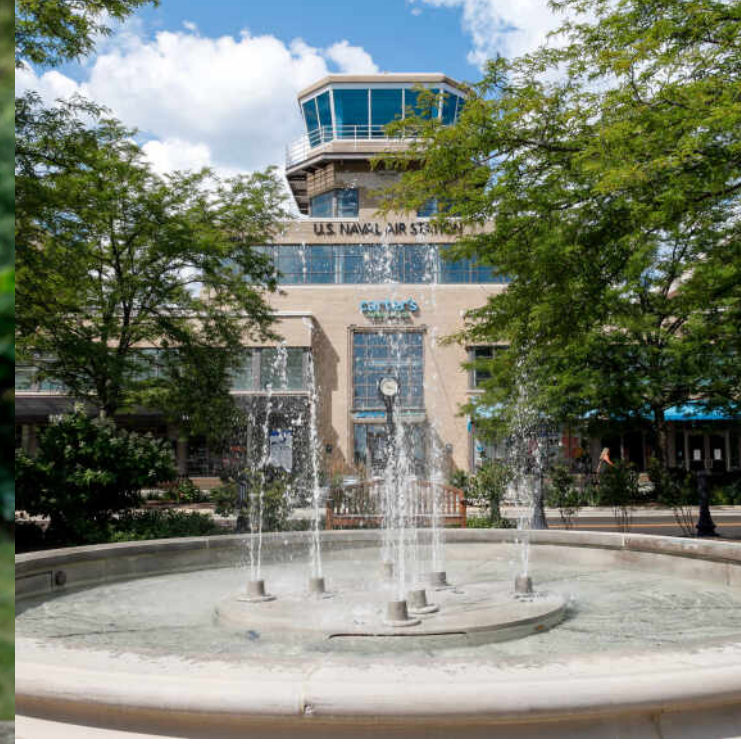




TOTAL: 2668 sq. ft
 Basement: 298 sq. ft, 1st floor: 1348 sq. ft, 2nd floor: 1022 sq. ft
 EXCLUDED AREAS: UNDEFINED: 14 sq. ft, ROOM: 85 sq. ft, UTILITY: 291 sq. ft,
 GARAGE: 422 sq. ft, FIREPLACE: 19 sq. ft, WALLS: 233 sq. ft

Floor Plan Created By Cubicasa App. Measurements Deemed Highly Reliable But Not Guaranteed.





JUST 20 MILES FROM DOWNTOWN CHICAGO, **GLENVIEW** IS A DESTINATION IN ITS OWN RIGHT.

The scenic North Shore town has expanded rapidly thanks to its established neighborhoods, convenient access to transportation, and array of amenities.

More than 45,000 people call Glenview home, with properties ranging from townhomes and condominiums to luxury custom homes featuring the latest amenities. Newer homes can also be found at The Glen, a large development on the site of the former Glenview Naval Air Station that offers an assortment of shops and restaurants, a movie complex, the Kohl Children's Museum, and access to one of the town's two Metra stations.

Glenview is served by a number of public and private schools, including Glenbrook South High School, ranked among the top in the nation according to Business Insider.

The Glenview Park District offers indoor and outdoor pools, golf courses, soccer fields, nature trails, an ice center, tennis club, and multi-purpose community center.

In addition to modern development, Glenview celebrates and preserves its early days with two notable attractions: Wagner Farm and The Grove. A 20-acre working farm, Wagner Farm has hands-on programs - horseback riding, tractor driving, and other activities - that reflect a day in the life of a 1920s farmer. The Grove, a National Historic Landmark, includes a prairie, nature trails, historic buildings, and a log cabin that dates back to the 1850s.



BRANDY ISAAC

FOUNDER/TEAM LEAD

THE BRANDY ISAAC TEAM

312-961-1178

BRANDYISAAC@ATPROPERTIES.COM