

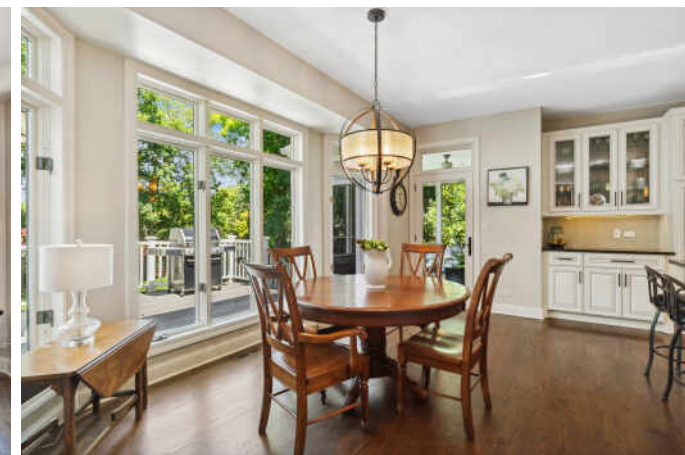
11108 SANDPIPER COURT
SOLON MILLS

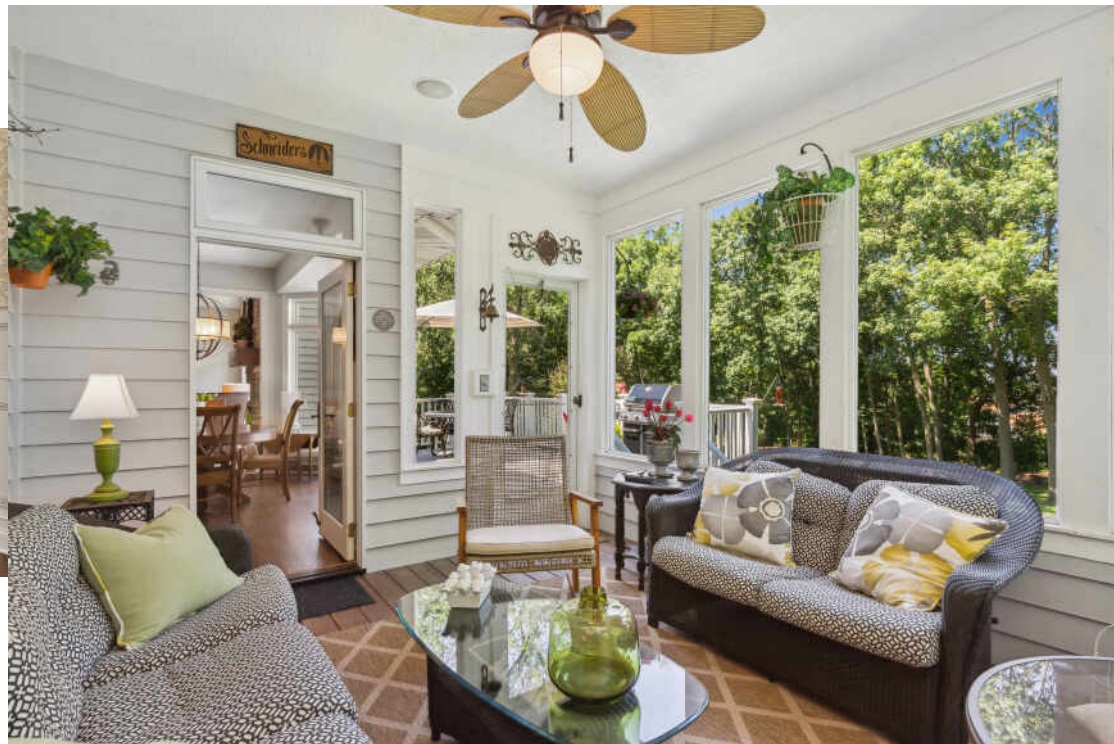




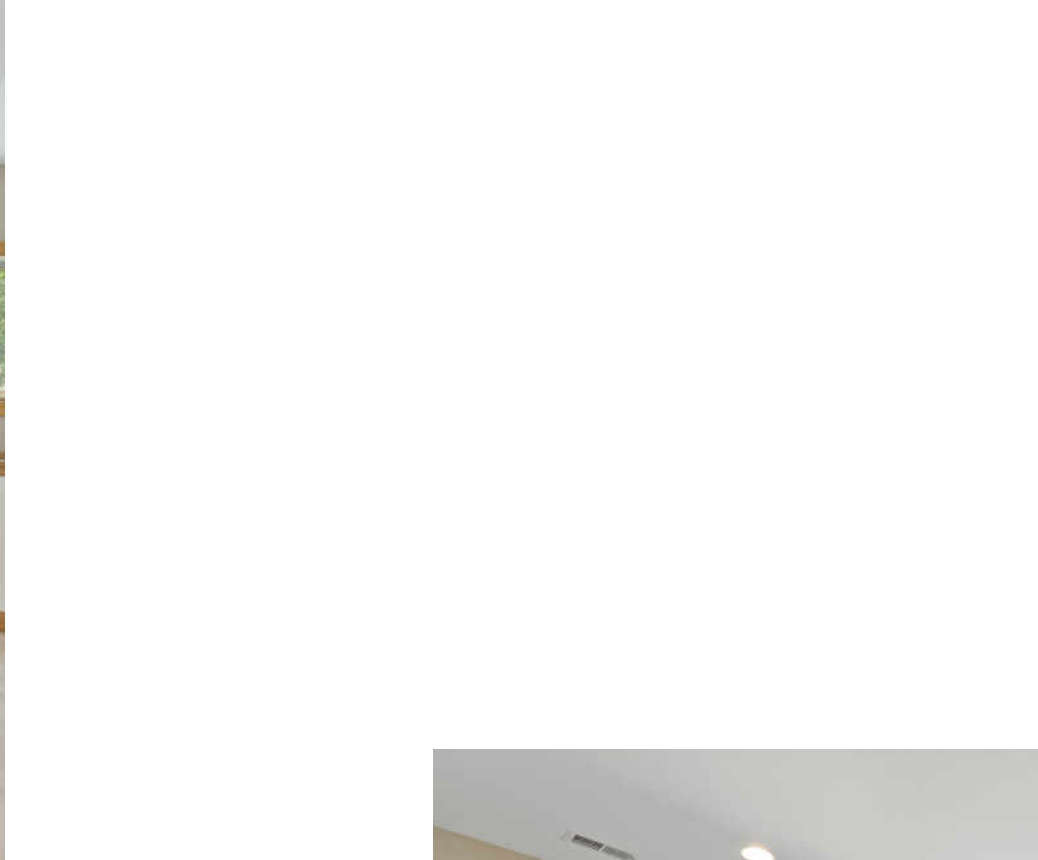
4 BEDROOM
3.1 BATH
TAXES: \$10,490
ASSESSMENTS: \$140 / YEAR

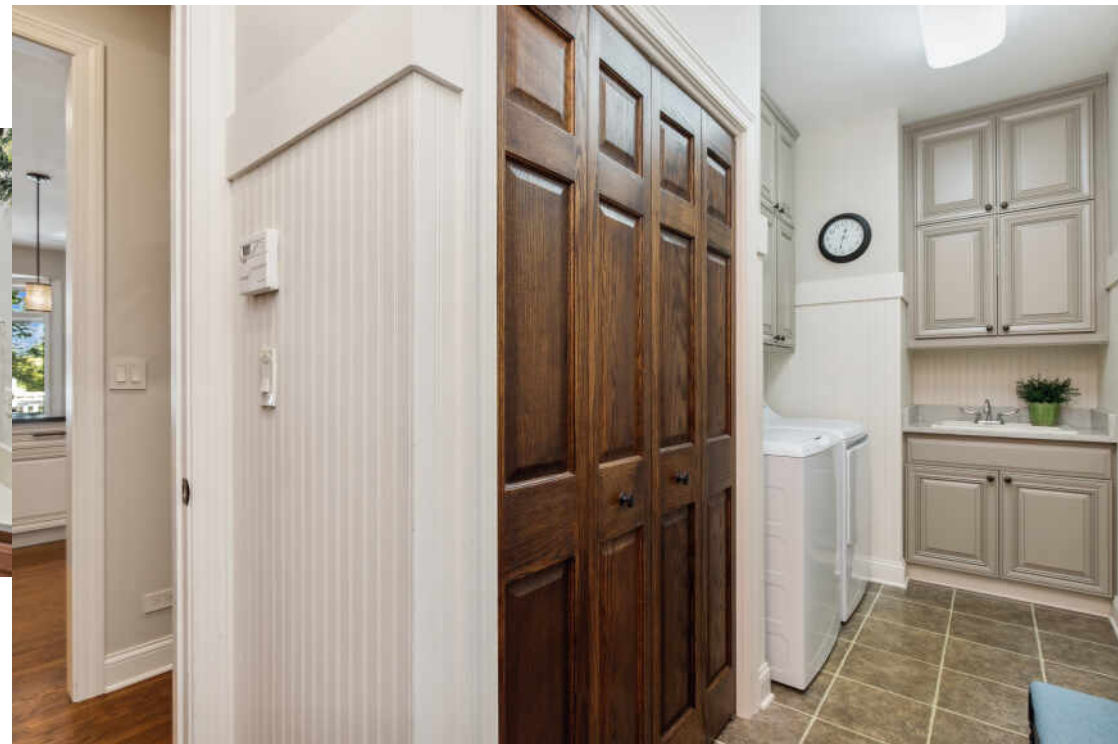
Welcome to this extraordinary, semi-custom Barrington II KLM Ranch home nestled in the sought-after picturesque Preserves neighborhood. Be prepared to be awestruck by this magnificent property as soon as you lay your eyes on it. This outstanding home will have you captivated by its impeccable beauty and stunning architectural design. Situated on 1.2 acres of lush mature trees, this property offers an unparalleled level of privacy and tranquility. Once inside, you will be greeted by an open and spacious floor plan, filled with an abundance of natural light cascading through the large windows on each side of the stunning floor to ceiling brick fireplace and vaulted ceilings in the great room. The attention to detail is evident throughout, with high-end finishes and luxurious features that showcase the home's craftsmanship including hardwood floors and 6-panel doors, elegant crown molding in the formal extended dining room, wainscoting, gorgeous wood beams, custom drapery and tasteful wallpaper and color palette. The heart of the home is the gourmet kitchen, adorned with beautiful custom cabinetry, granite countertops, backsplash, under cabinet lighting, new SS appliances including double oven and large peninsula island. The kitchen seamlessly flows into the expansive great room and breakfast room as well as the bright and cherry sunroom. Right off the sunroom is the large composite deck with dual staircases leading to the backyard oasis. The den is separated by beautiful glass French Doors, the elegant custom built-in cabinetry is ideal for storage. The magnificent primary suite looks out into the backyard and is complete with a luxurious En-suite bathroom featuring a spa-like jetted tub, skylight, separate shower, double vanities and extra-large walk-in closet. The additional bedrooms located on the other end of the home are large ensuring comfort for everyone. Enjoy another 2000 SQFT of living space in the gorgeous finished walk-out basement. The 2nd kitchen features granite countertops, stove, dishwasher, sink and mini-fridge as well as large island which is great for entertaining. The family room is large, featuring a 2nd brick fireplace and rec space, perfect for playing a game of pool. The additional 4th bedroom and bathroom are convenient. The office has glass French doors and custom built-in cabinetry, with views of the backyard. The workshop could inspire even the most challenged carpenter to build something spectacular. The glass doors lead out to the extraordinary backyard and patio. Lastly, the side load, drywalled 3 1/2 car garage is an awesome space to store all your toys. Don't miss this incredible opportunity to own a truly magnificent home!















AMANDA MAJEROWSKI

(847) 456-8128

847-367-0500

AMAJEROWSKI@ATPROPERTIES.COM



CHRISTIE'S
INTERNATIONAL REAL ESTATE