

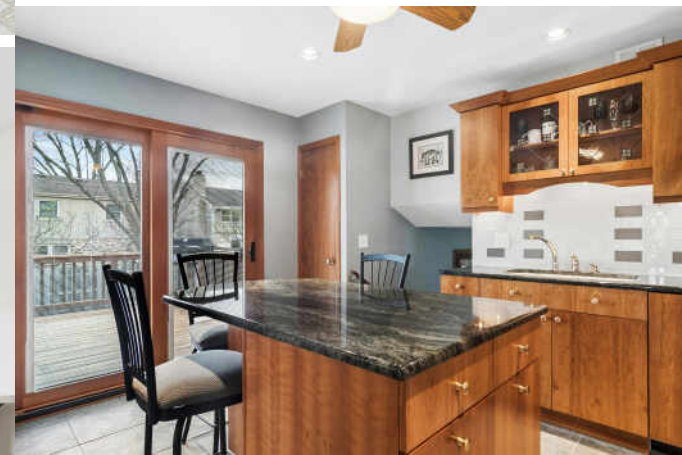
111 N WILSHIRE LANE
ARLINGTON HEIGHTS

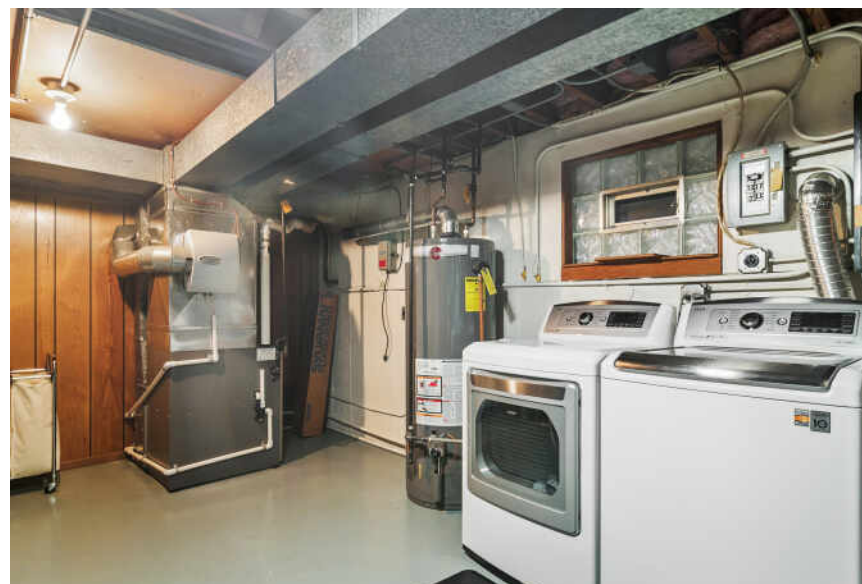




Set in a prime Arlington Heights location, this 4 bedroom, 2.1 bath home offers the kind of setting that's hard to find. This home sits directly across from Berbecker park, just one block to Windsor Elementary school, and only a mile from downtown Arlington Heights. The long-time owner has maintained every inch of the home, with a layout that simply works. Step inside to an inviting foyer that leads you to the living/dining room combo (hardwood flooring under the carpet). The kitchen features custom cabinetry, a Sub-Zero refrigerator, and an island that offers seating and a great view! Just off the kitchen, the family room boasts a cozy fireplace and a great spot to unwind. Upstairs are 4 generous-sized bedrooms with hardwood flooring under all carpeting. The primary bedroom has an updated ensuite bathroom and plenty of closet space. The second full bath has also been nicely updated; perfect for family and guests. Out back, you'll find a yard that's ready to be enjoyed, complete with both a deck and patio, ideal for summer evenings, weekend get-togethers, or simply relaxing outdoors. The finished basement is ready for your decorating ideas, offering the opportunity to create additional living space tailored to your needs. The two-car attached garage with epoxy flooring and ample storage is perfect for cars and toys. With its unbeatable location, thoughtful features, and strong upkeep, this is a home that checks all the boxes in Arlington Heights.

4 BEDROOM
2.1 BATH







WITH ALL THE AMENITIES YOU WOULD EXPECT TO FIND IN LARGER URBAN SETTINGS, **ARLINGTON HEIGHTS** GIVES MOST CITIES A RUN FOR THEIR MONEY

Located 25 miles northwest of Chicago, the community has a vibrant downtown area, theaters, restaurants, shopping, parks, recreation, and two commuter train stations. It's no wonder Arlington Heights tops the list of the highest-populated villages in the country.

Arlington Heights is home to more than 200 restaurants, many situated in its downtown area and offering something for every taste.

The village hosts outdoor festivals, parades, and its ever-popular Frontier Days. Residents have plenty of bike paths, picnic areas, golf courses, lakefront paths, and more to enjoy.

Commuting downtown is a convenient 30-minute trip with two Metra stations offering direct access to Chicago's Ogilvie Station. The village also has direct access to I-90 as well as Route 53, which links to several interstates.



SARAH ANDERSON

(847) 858-1223- MOBILE

847-797-0200- OFFICE

SARAHANDERSON@ATPROPERTIES.COM