

1142 N WOOD STREET UNIT 1S
EAST UKRAINIAN VILLAGE





ROOM DIMENSIONS

LIVING ROOM : 22' × 14'

KITCHEN : 15' × 8'

PRIMARY BEDROOM : 15' × 14'

SECOND BEDROOM : 11' × 10'

LAUNDRY ROOM : 3' × 3'

TERRACE : 19' × 9'

CORNER UNIT IN SOUGHT AFTER WICKER PARK BUILDING WITH BRIGHT SOUTHEAST EXPOSURE, LUSH PRIVATE TERRACE, AND DEEDED GARAGE PARKING STEPS FROM DIVISION AND DAMEN!!

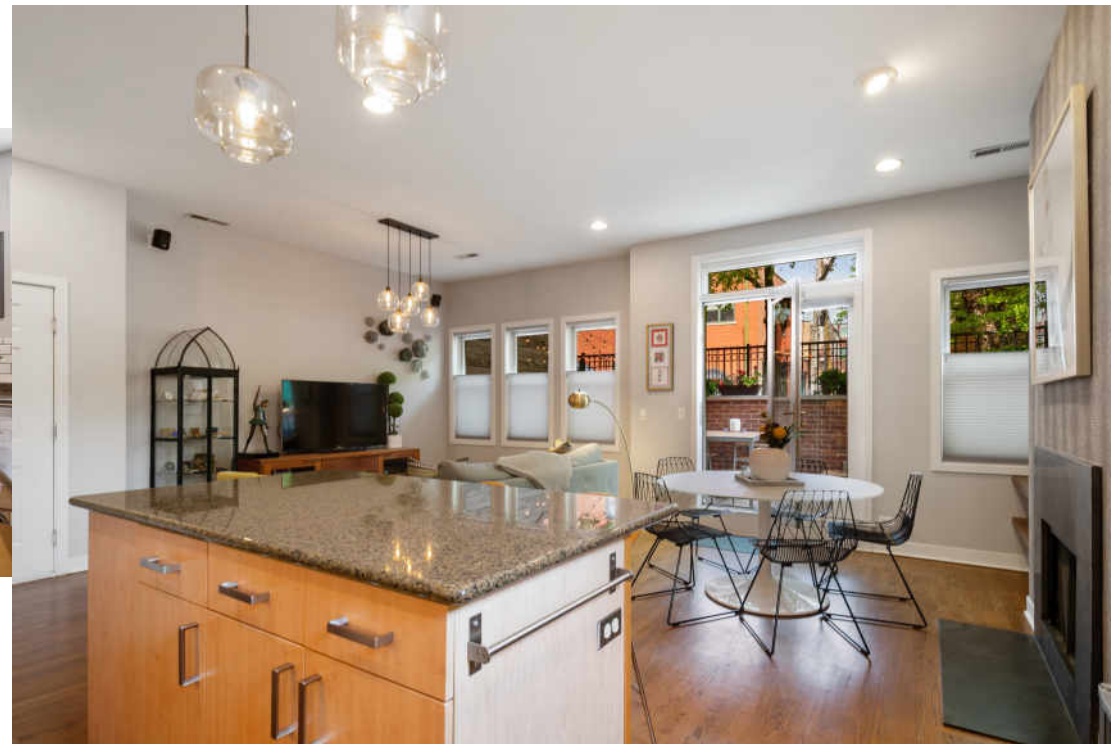
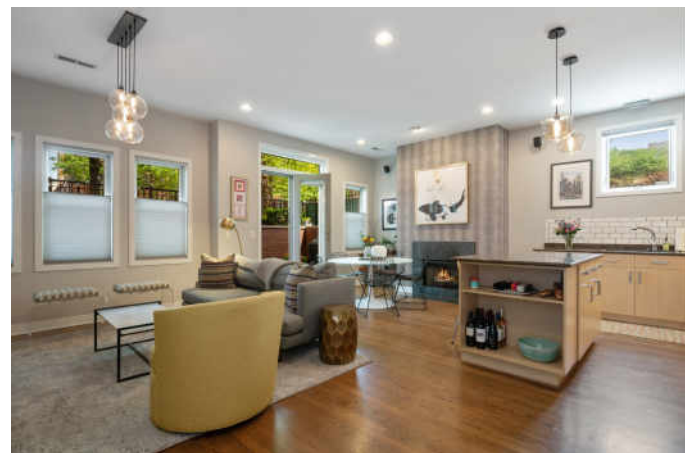
STUNNING unit with 10 ft ceilings, wrap around windows and open layout with two outdoor spaces for ideal INDOOR/OUTDOOR LIFESTYLE - 1. Private terrace directly off kitchen, perfect for entertaining and relaxing 2. Fenced common backyard with dog run. Timeless, MODERN KITCHEN with flat front cabinets, granite island and NEW STAINLESS appliances including double oven opens right into living space with fireplace. Surround sound and hardwood floors throughout. Huge master bedroom that easily fits king with x-large built out walk-in closet. Relaxing master bath with double vanity, jet tub. PLENTIFUL STORAGE including deep inside closet space along with two storage closets outside unit. Deeded GARAGE PARKING included in price! Walk to restaurants and boutiques. IDEAL location for commuters - two blocks to Blue Line, a few more to expressway. Professionally managed building with high owner occupancy and healthy reserves. Listing agent has taken appropriate measures with owner to ensure everyone's safety during this time.

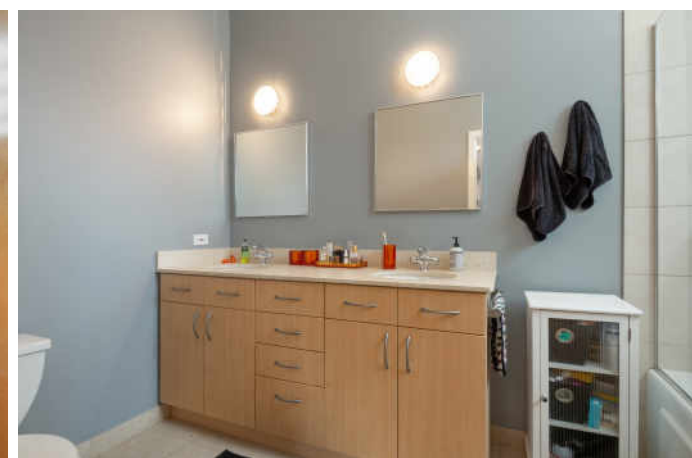
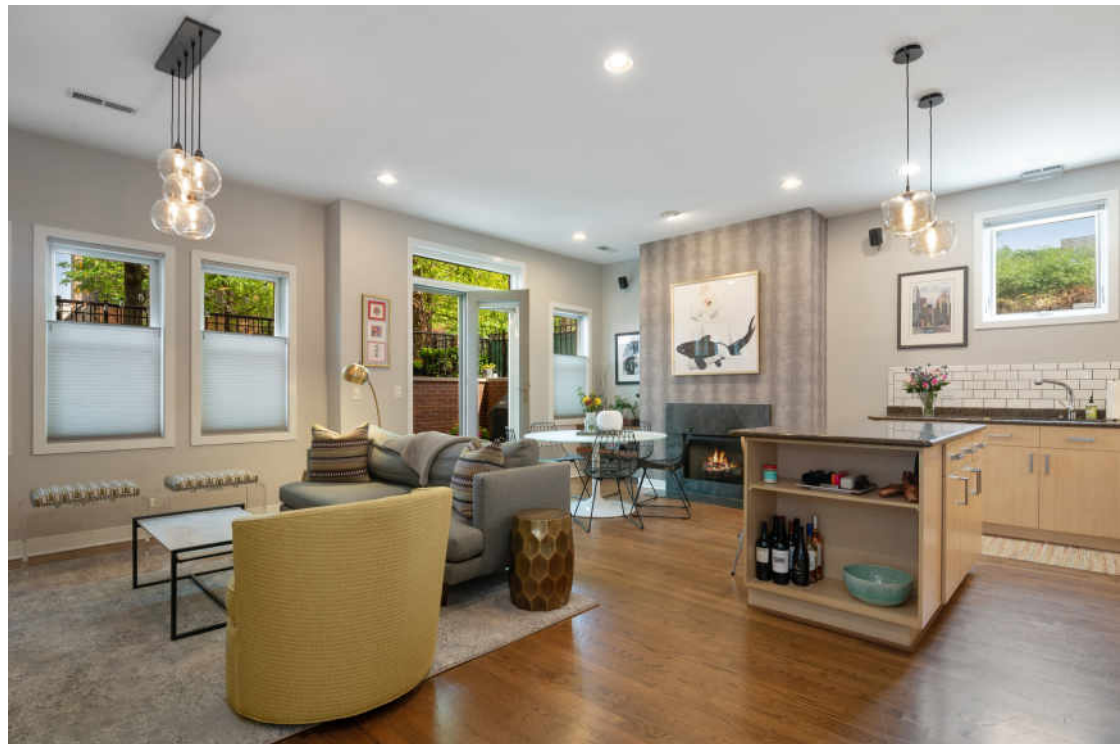
2 BEDROOM

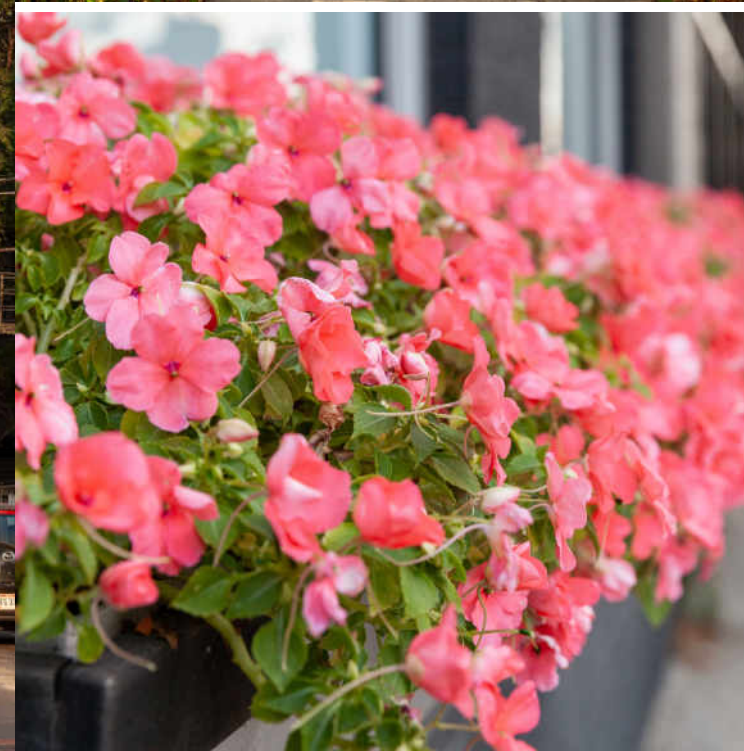
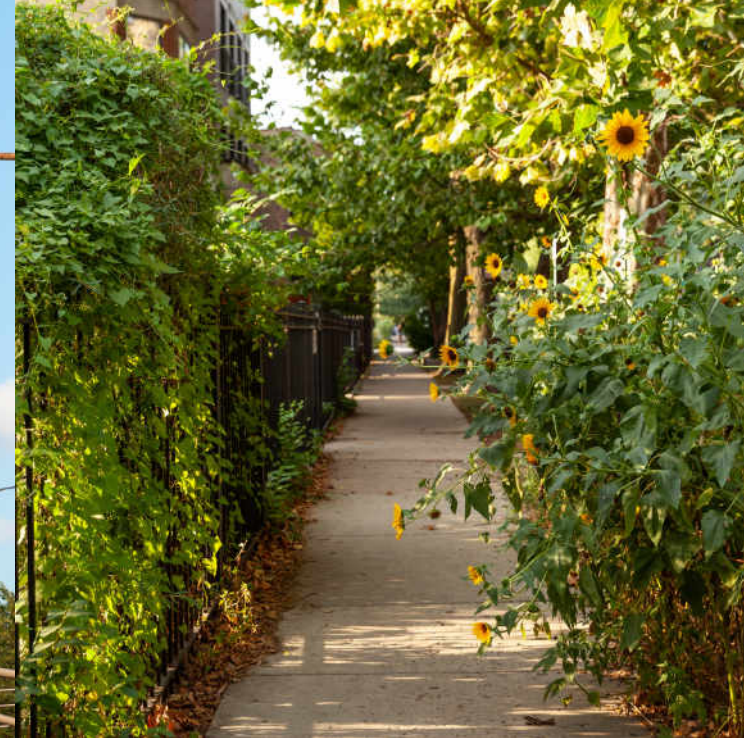
2 BATH

TAXES: \$6,543.85

ASSESSMENTS: \$286







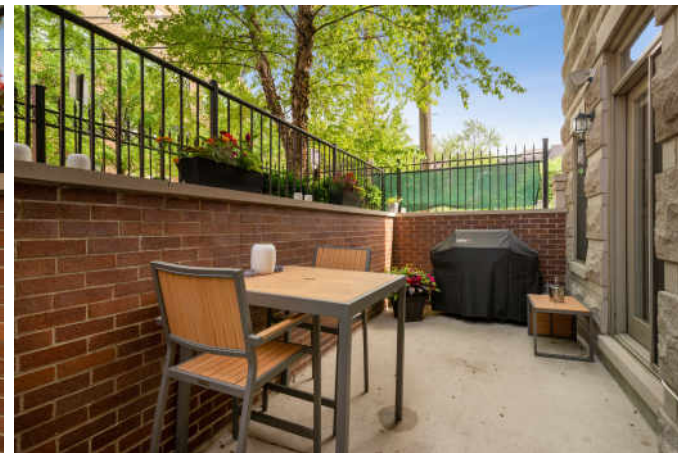
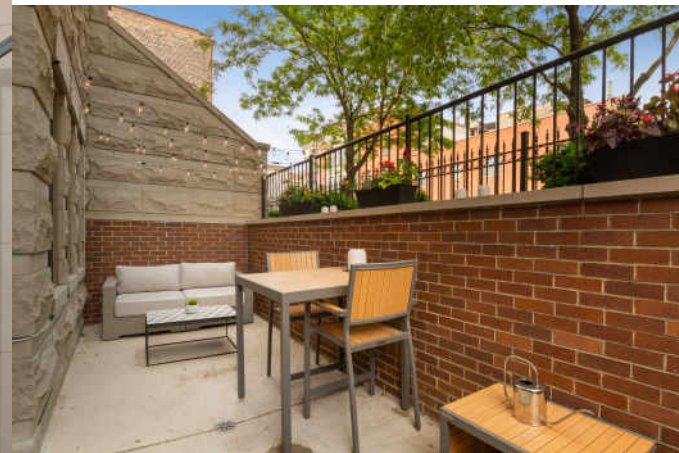
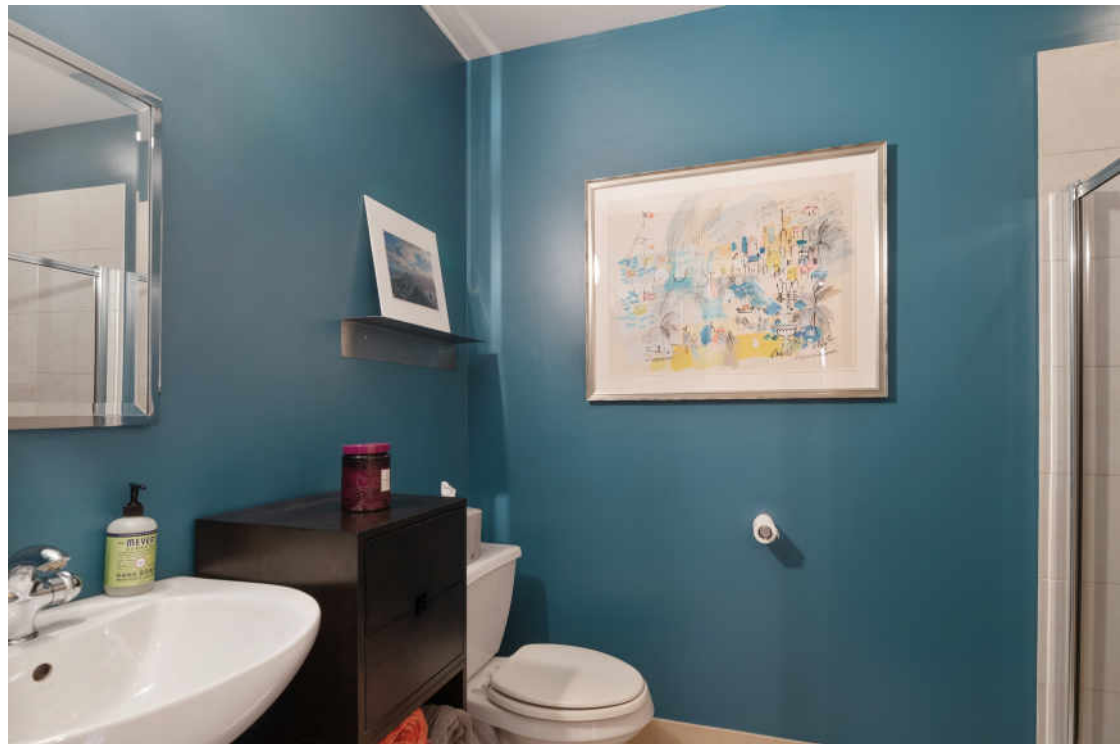
YOU KNOW A NEIGHBORHOOD HAS REACHED A CERTAIN LEVEL OF COOL WHEN IT ADOPTS A NEW NAME. SUCH IS THE CASE WITH **EAST VILLAGE**, THE NEIGHBORHOOD FORMALLY KNOWN AS EAST UKRAINIAN VILLAGE.

Just 10 minutes from The Loop and a few blocks from Wicker Park, the East Village is enjoying a rebirth, attracting Chicagoans seeking homes that are in close proximity to everything they love about the city.

The mostly residential neighborhood is surrounded by a lively commercial area with a variety of eateries, bars and shops.

Housing options include single-family homes, condominiums, two- and three-flat greystones as well as small cottages. To preserve the neighborhood's character, the blocks bounded by Division, Chicago, Hermitage and Damen have been designated a Chicago Landmark District and placed on the National Register of Historic places.

A new wave of transit-oriented developments (TOD) is underway, including a historic art deco church that was saved from demolition and converted into apartments with rooftop decks and amazing views. Locals can take advantage of the bike lanes along Milwaukee Avenue as well as the multiple CTA bus routes and nearby Blue Line stop on Division. They can also hop on the expressway for easy traveling to The Loop or suburbs.





ALLEY BALLARD

(312) 848-7787

773-862-0200

ALLEYBALLARD@ATPROPERTIES.COM

WWW.THEBALLARDREPORT.COM

The
Ballard
Group

ALLEY | GLENN | NICHOLE | MATT

@properties[®]

1142WOOD1S.INFO

All specifications, features, designs, price, assessments, taxes and materials are subject to change without notice. Depicted floor plans and architectural renderings are only an artist's impression.

