

11612 DAVEY DRIVE
HUNTLEY



@properties®

CHRISTIE'S
INTERNATIONAL REAL ESTATE



ROOM DIMENSIONS

FOYER : 12.7' × 13.8'

LIVING ROOM : 14.3' × 13.4'

DINING ROOM : 10.2' × 11.5'

KITCHEN : 9.5' × 11.5'

BREAKFAST NOOK : 8.4' × 11.6'

FAMILY ROOM : 17.7' × 11.1'

BATHROOM POWDER : 4.11' × 5.4'

PRIMARY BEDROOM : 14.8' × 11.5'

PRIMARY BATHROOM : 6.11' × 11.5'

BEDROOM : 10.9' × 13.4'

BEDROOM : 9.8' × 10'

BATHROOM FULL : 4.11' × 7.1'

BASEMENT REC ROOM : 23.6' × 25.1'

BASEMENT BEDROOM/BONUS : 14.1' × 9.8'

UTILITY ROOM/LAUNDRY : 12' × 11.1'

BASEMENT BATHROOM : 8.1' × 5.8'

11612 DAVEY DR, HUNTLEY

Welcome to 11612 Davey Drive in Huntley! This beautifully refreshed 3-bedroom home offers 3 full bathrooms, a convenient first-floor powder room, and a finished basement with a 4th bedroom—providing flexible space for guests, a home office, or extended living.

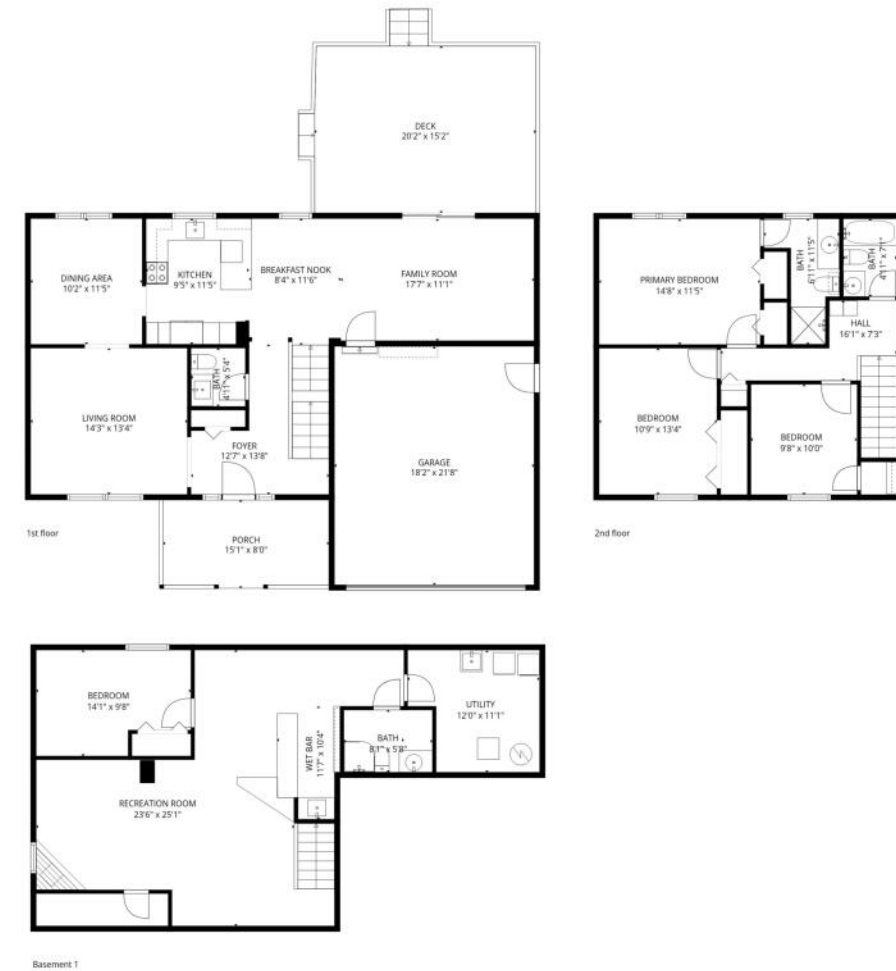
The main level has been updated from floor to ceiling, featuring a stunning new kitchen with crisp cabinetry, granite countertops, and stainless steel appliances. Whether you're hosting gatherings or enjoying quiet evenings at home, this space is both stylish and functional.

The finished basement is designed for entertaining, complete with a cozy fireplace and wet bar—perfect for game nights or weekend get-togethers. Step outside to the composite deck and imagine summer evenings spent relaxing or hosting friends.

With a 2-car garage and a prime location near shopping, dining, and easy access to Route 47 and I-90, this home combines comfort, updates, and convenience in one fantastic package.







TOTAL: 2459 sq. ft
 Basement 1: 889 sq. ft, 1st floor: 889 sq. ft, 2nd floor: 681 sq. ft
 EXCLUDED AREAS: GARAGE: 394 sq. ft, PORCH: 118 sq. ft, DECK: 323 sq. ft,
 WALLS: 221 sq. ft

FLOOR PLAN CREATED BY CUBICASA APP. MEASUREMENTS DEEMED HIGHLY RELIABLE BUT NOT GUARANTEED.



SAY HELLO TO THE VILLAGE OF **HUNTLEY**, HOME OF FRIENDLY NEIGHBORS AND THE GREAT OUTDOORS.

Wide-open spaces in Huntley set the scene for activities like hiking, biking, fishing, and camping. The community's parks, aquatic center, and Pinecrest Golf Club offer several recreational opportunities along with the nearby Kane County Forest Preserve and McHenry County Conservation District.

The community comes together for events throughout the year such as a summer concert series at the Town Square, a farmers market, and a fall festival. Deicke Park is another popular spot for gatherings and includes a playground, baseball field, and more.

Homebuyers will love Huntley's range of properties including attached and single-family homes in traditional and colonial styles as well as new construction developments.

Commuters will find easy access to I-90 from Route 47 and Metra stations in nearby Crystal Lake or Elgin.



LIZ SIMONI

(630) 913-7201

LIZSIMONI@ATPROPERTIES.COM

NWSHOMEADVISORS.COM

