

1166 WEBSTER LANE
DES PLAINES





ROOM DIMENSIONS

LIVING ROOM : 18' x 13'

KITCHEN : 13' x 9'

PRIMARY BEDROOM : 13' x 10'

SECOND BEDROOM : 13' x 10'

LAUNDRY : 13' x 6'

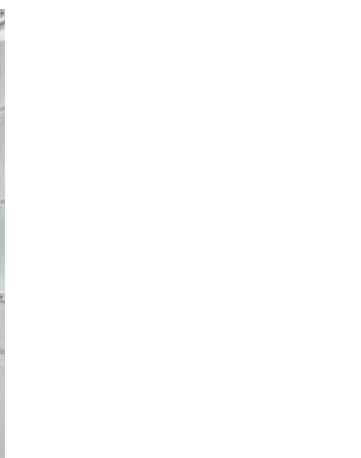
2 BEDROOM

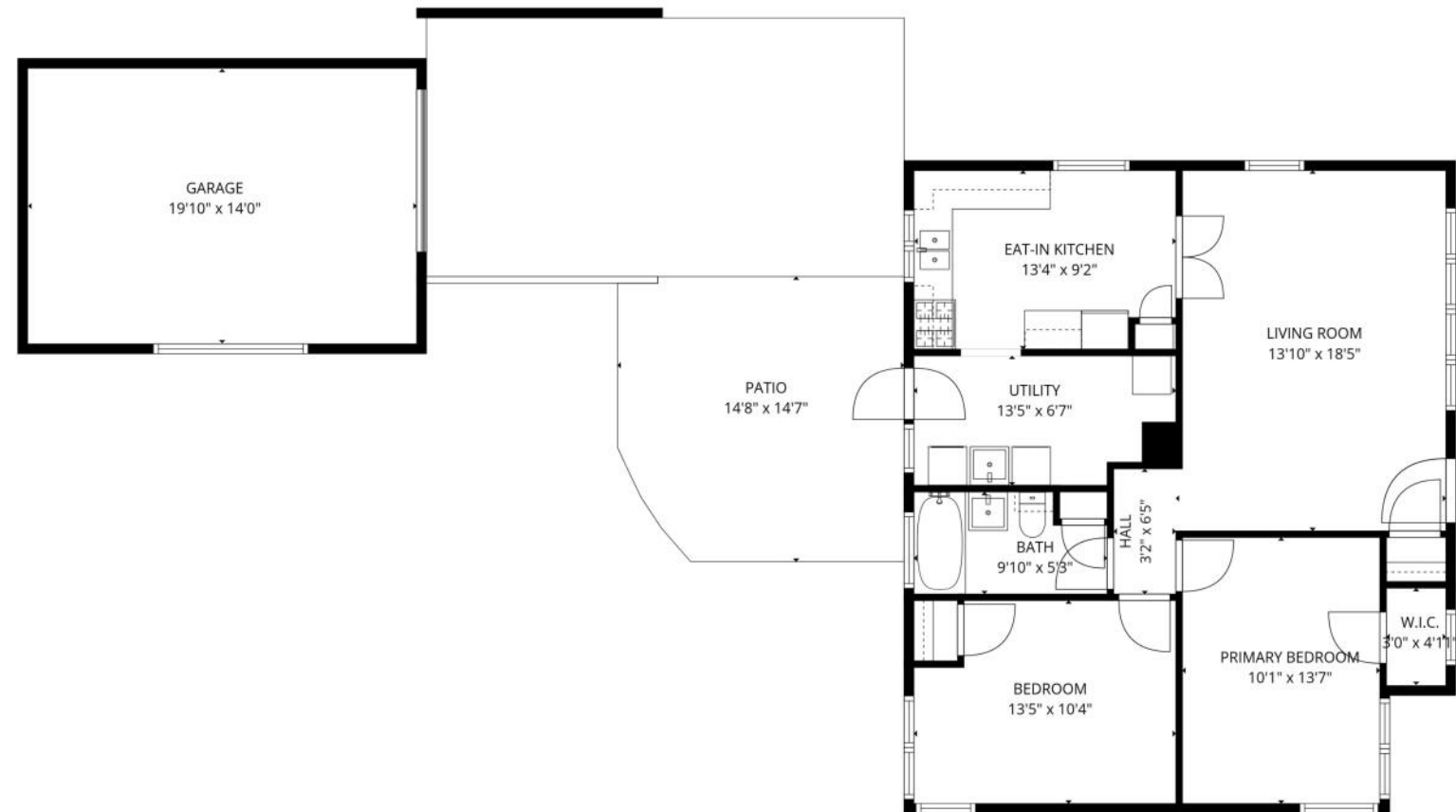
1 BATH

TAXES: \$6,470

SIMPLY ADORABLE!!

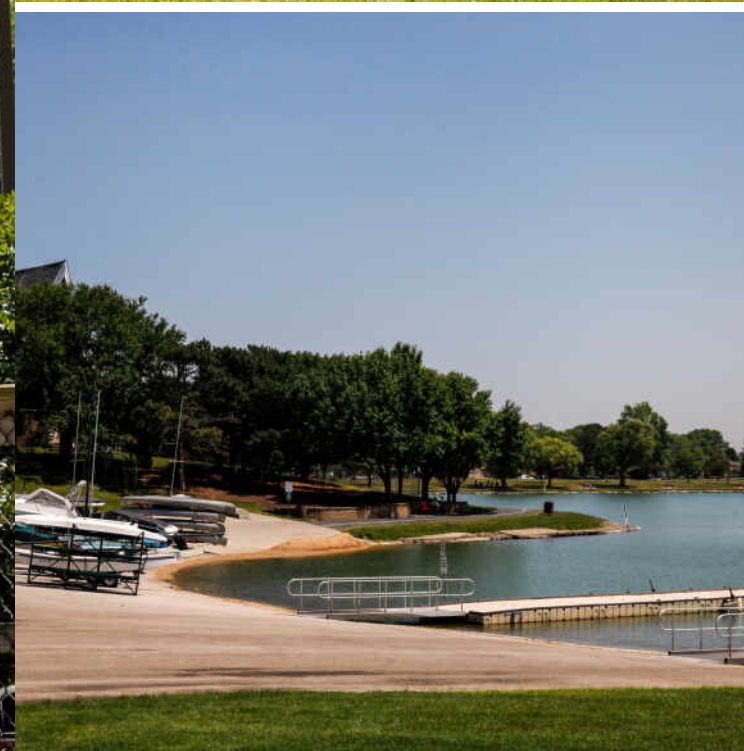
Wow! Don't miss this DARLING ranch! Welcoming living room with French doors and architectural arch. Rich hardwood floors throughout main living area. Two large comfortable bedrooms. New flooring in eat-in kitchen and separate laundry room. Sparkling updated bath. New furnace in 2021; new central air in 2024; new hot water heater in 2026! Oversized one car garage. Enjoy summer nights on Flagstone patio overlooking beautiful fenced yard. Won't disappoint!





TOTAL: 858 sq. ft
 1st floor: 858 sq. ft
 EXCLUDED AREAS: GARAGE: 280 sq. ft, PATIO: 203 sq. ft, WALLS: 94 sq. ft

FLOOR PLAN CREATED BY CUBICASA APP. MEASUREMENTS DEEMED HIGHLY RELIABLE BUT NOT GUARANTEED.



THERE ARE NO STRANGERS IN **DES PLAINES**, AT LEAST NOT FOR LONG.

The city prides itself on being a friendly and welcoming place for newcomers as well as lifelong residents.

Located about 17 miles northwest of Chicago, near O'Hare International Airport, the city has a mix of residential, commercial, and industrial properties making it a great place to live, work, and play.

Des Plaines has several affordable and connected neighborhoods - from downtown high-rise condominiums to single-family neighborhoods.

Metropolitan Square, a mixed-use center, is a block away from the city's Metra station with convenient transportation to downtown Chicago on the Union Pacific Northwest Line. The Square includes 135 condominiums and lofts near local eateries as well as a large grocery store and more than 80,000 square feet of retail and office space.

The Des Plaines Park District offers numerous recreational facilities from water slides, swimming pools, and ice skating to 18-hole golf courses, bike trails, and boating. The city has 37 parks and more than 300 recreational programs and events.



PATRICIA LENNON

(847) 490-5757

847-797-0200

PATRICIALENNON@ATPROPERTIES.COM