

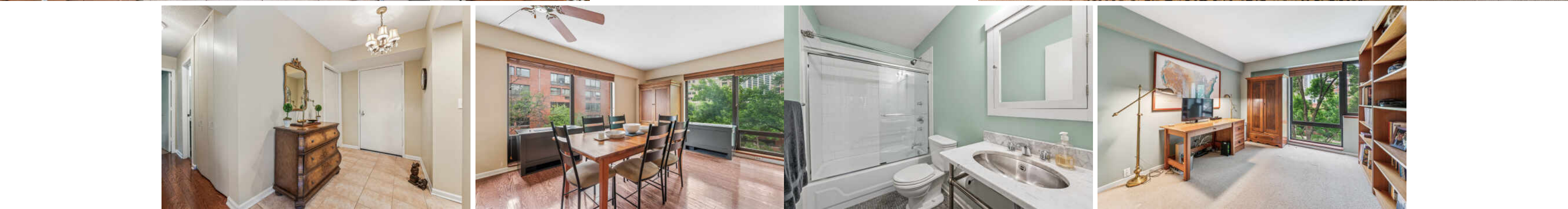
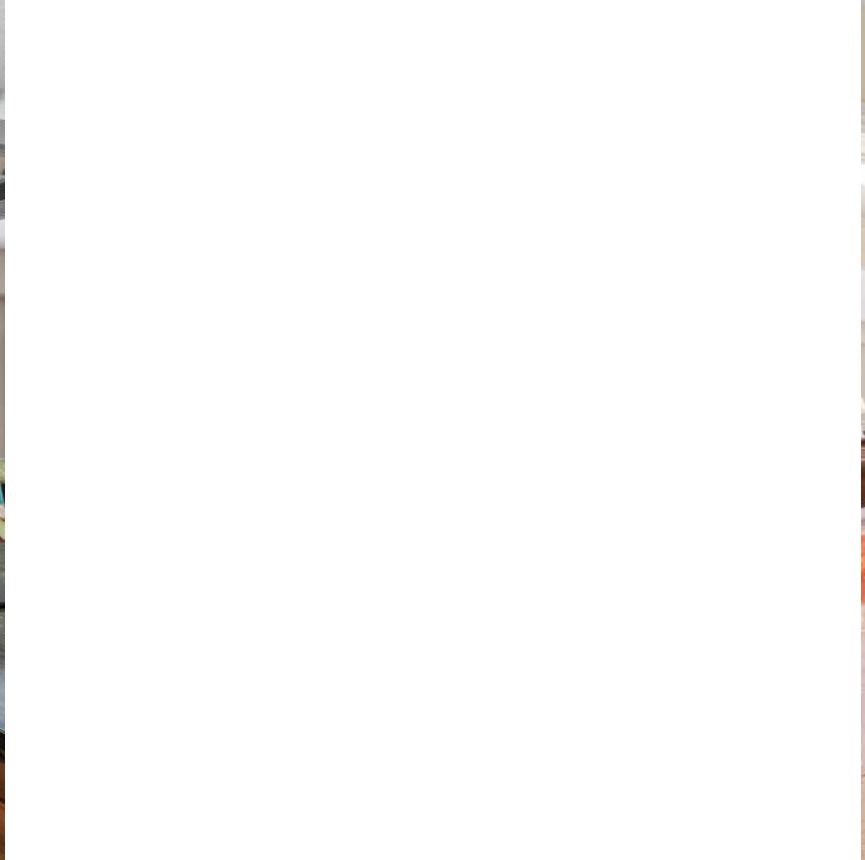
1169 S PLYMOUTH COURT #312
SOUTH LOOP

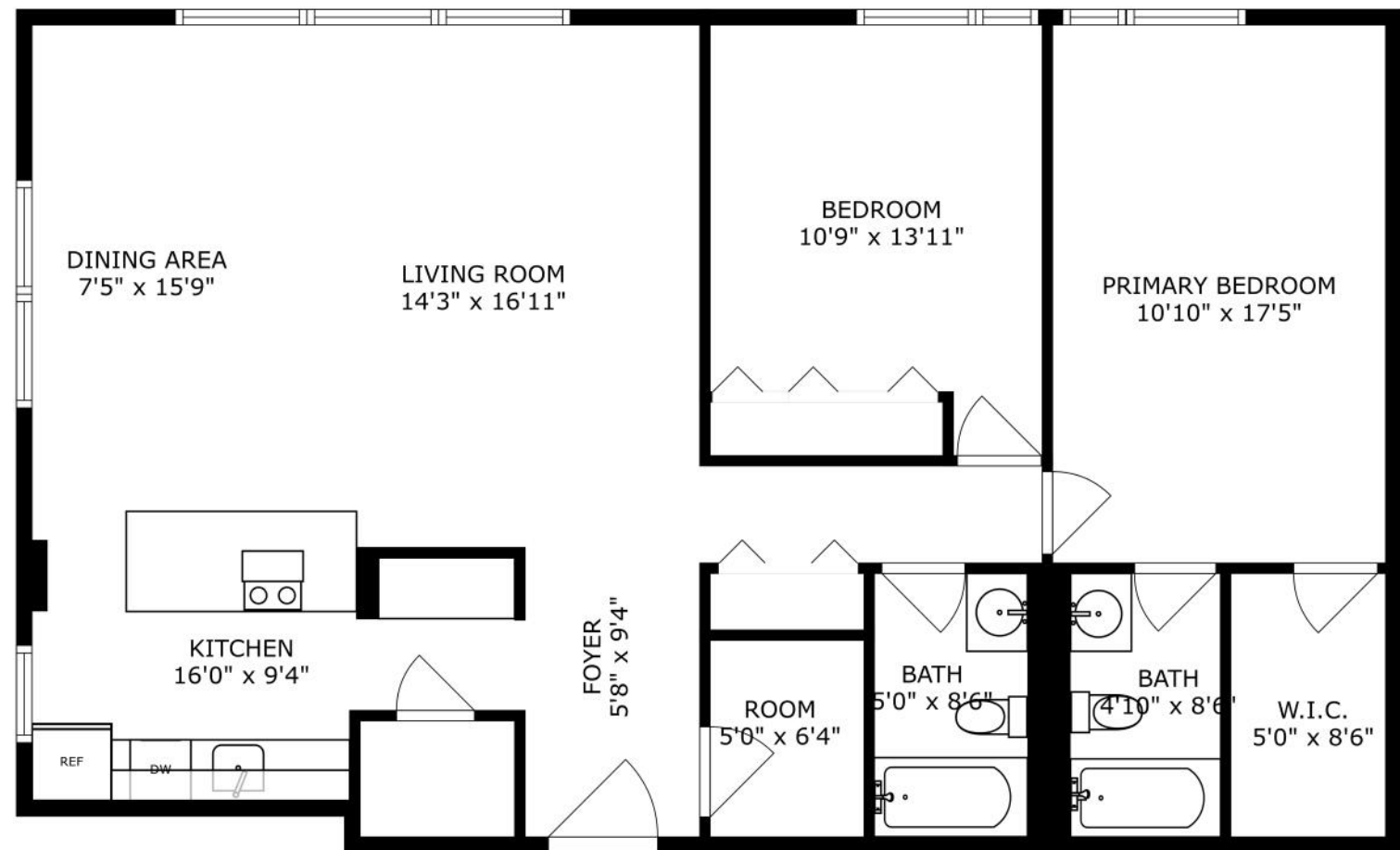




2 BEDROOM
2 BATH
TAXES: \$6,089
ASSESSMENTS: \$892 / MONTH

Dearborn Park Phase 1! Stunning CORNER light-filled 2 bedroom 2 bath home with beautiful courtyard views. Updated kitchen with stainless steel appliances, granite counters, ceiling height custom cabinetry, and pantry. The walk-in closet off the front entrance offers ample extra storage. The layout in a well-maintained building is designed with an easy and inviting flow for everyday living and gracious entertaining - a peaceful treetop retreat within a dynamic setting. Primary bedroom with walk-in closet and private bath. In addition, there is an extra full-height storage cage on same floor. The unique South Loop location offers a vibrant urban neighborhood close to cultural and recreational attractions and featuring plenty of green space, including tennis courts. Walking distance to The Museum Campus, Millennium Park, lakefront, theaters, entertainment and sports venues. Close proximity to an abundance of exceptional dining and shopping options, including Whole Foods, Trader Joe's, Mariano's, and Jewel. Excellent access to public transportation and South Loop Elementary School. City living within a lovely, treelined community - move in time to enjoy the lushly landscaped courtyard and outdoor pool!





SIZES AND DIMENSIONS ARE APPROXIMATE, ACTUAL MAY VARY.



CHARACTERIZED BY TOWERING HIGH RISES AND HISTORIC POCKETS THAT REFLECT THE AREA'S STORIED PAST, THE **SOUTH LOOP** IS A DISTINCTIVE CHICAGO NEIGHBORHOOD.

Chicago's original Gold Coast in the late 19th century, the South Loop was once home to the likes of Marshall Field, George Pullman, and Philip Armour. Today the vibrant neighborhood is known for its access to the lakefront, shops, restaurants, parks, Museum Campus, and The Loop.

The South Loop is comprised of several historic areas including Printer's Row, which features a number of buildings that have been converted into residential lofts, along with Motor Row District and Prairie Avenue District. Meanwhile, several apartment and condominium buildings are under construction, bringing thousands of new residences to the neighborhood.

The South Loop's housing boom has brought with it an influx of retailers along with eateries and nightlife on South Michigan Avenue. The Roosevelt Collection is a popular destination featuring a movie theater and an assortment of retailers.

Museum Campus is the cultural hub of the South Loop featuring attractions including the Field Museum, Shedd Aquarium, Adler Planetarium, and Soldier Field. Residents also enjoy being in close proximity to Northerly Island and public transportation including the CTA's Roosevelt station.



This image shows a blank sheet of white paper with horizontal ruling lines. The lines are evenly spaced and run across the width of the page. There are no margins, text, or other markings on the paper.



KEVIN GREEN

(312) 520-8485

773-472-0200

KEVINGREEN@ATPROPERTIES.COM



All specifications, features, designs, price, assessments, taxes and materials are subject to change without notice. Depicted floor plans and architectural renderings are only an artist's impression.

