

116 LAVENDER COURT

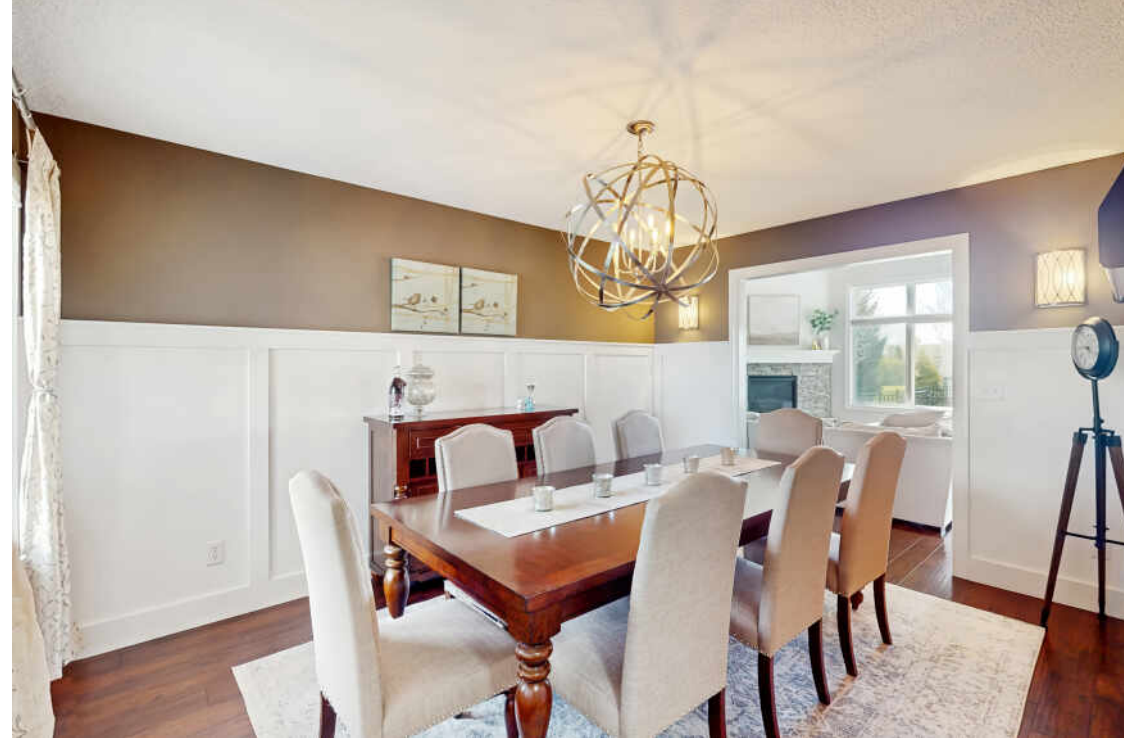
NEW CARLISLE

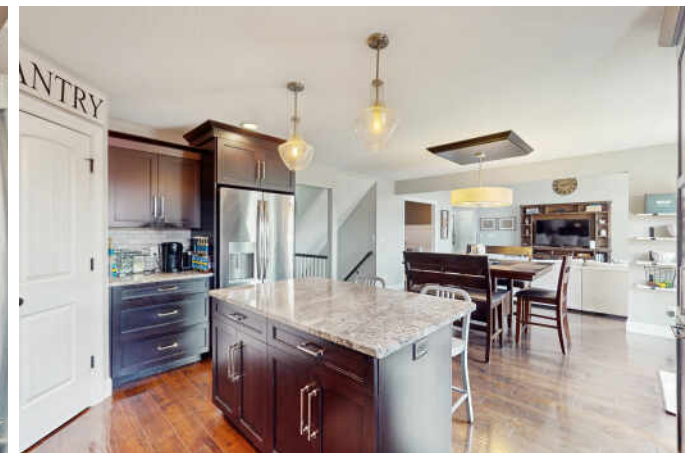
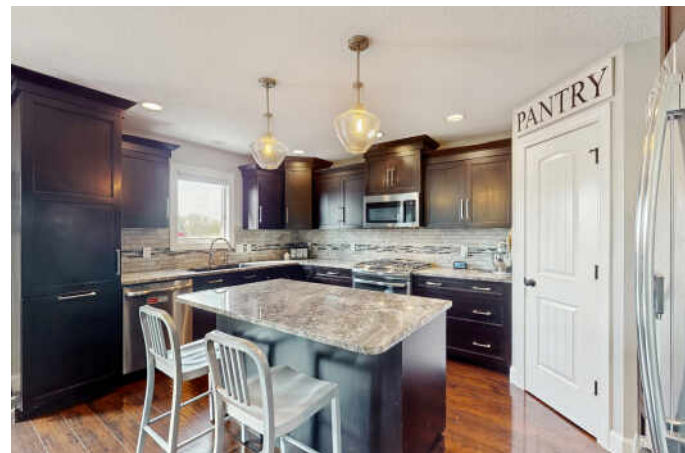


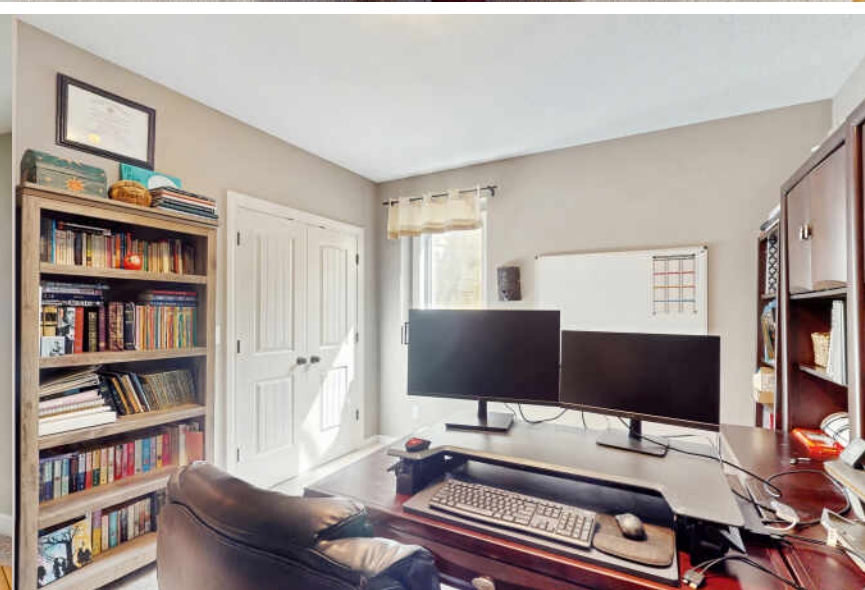
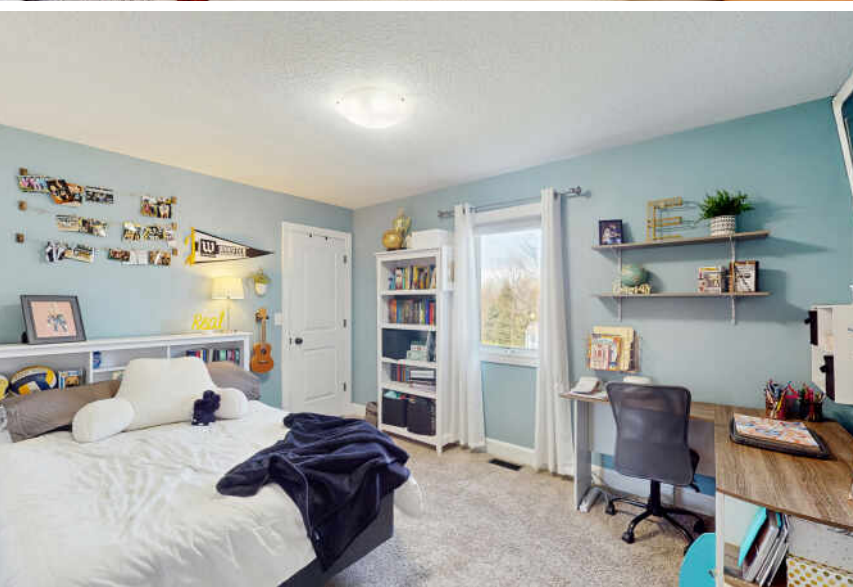


5 BEDROOM
3.5 BATH
TAXES: \$5,479.74
ASSESSMENTS: \$200 / YEAR

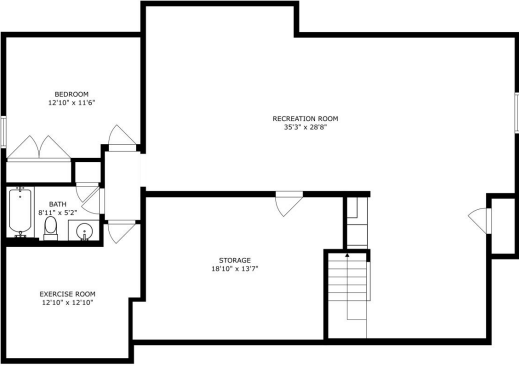
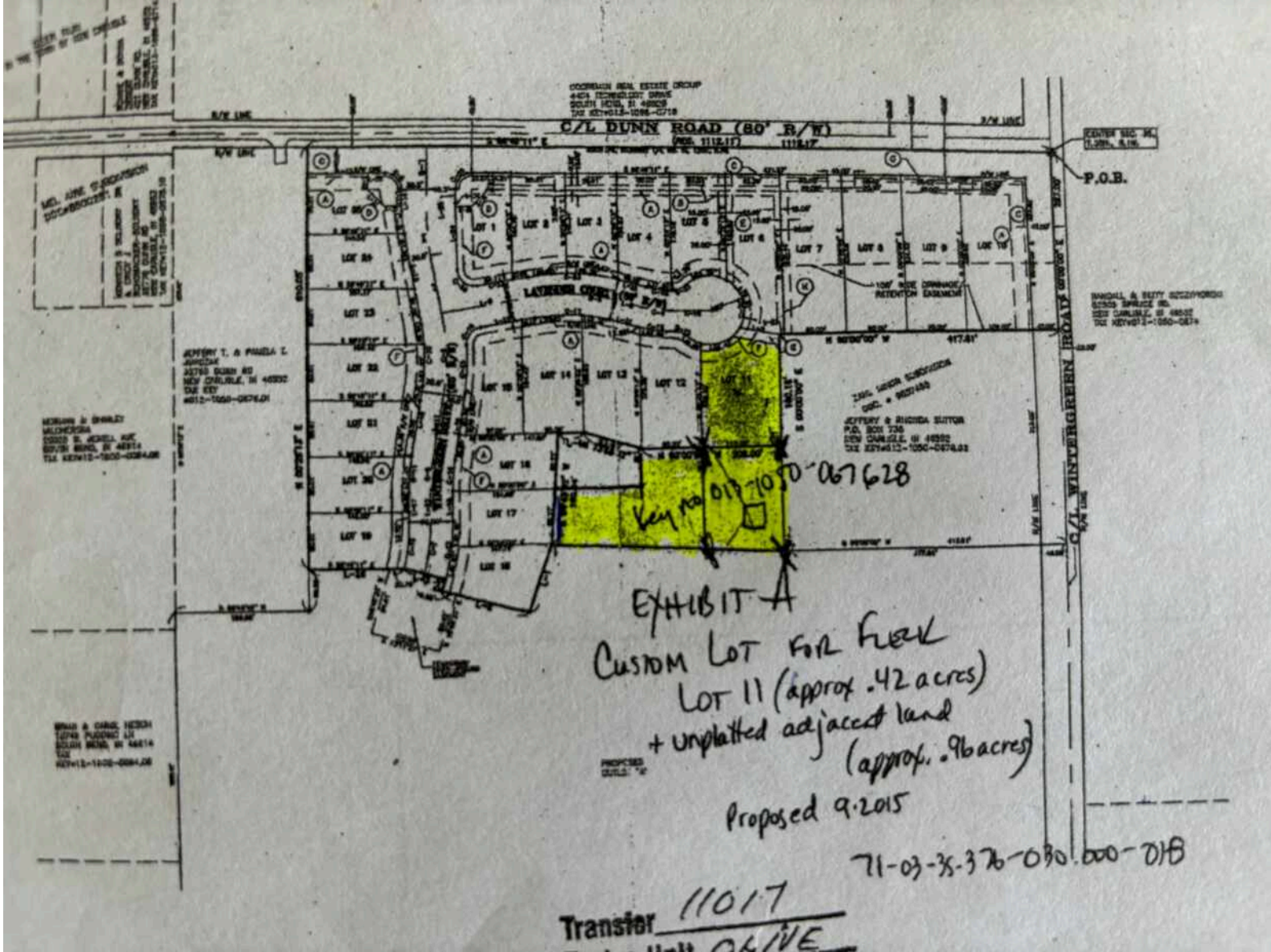
Welcome to your dream home! This stunning 5 bedroom, 3.5 bath Craftsman-style home is set on 1.44 acres of meticulously landscaped land, featuring an inviting 16x32 in-ground pool surrounded by metal fencing, and fenced-in vegetable & fruit garden bursting with strawberries, blueberries & raspberries. With two pear trees gracing the property, this home offers a perfect blend of outdoor beauty & modern living. Step into a bright & airy living room that boasts a magnificent cathedral ceiling, cozy stone gas fireplace, and elegant transom windows that flood the space with natural light. A convenient coat closet adds functionality to this welcoming area. The living room seamlessly flows into the breakfast area & kitchen, creating an ideal space for entertaining. The heart of the home features stunning granite countertops, stainless steel appliances, soft close cabinetry & walk-in pantry with wood shelves. The island, equipped with electric outlets, provides additional prep space & seating. Formal dining room, adorned with wainscoting & wired for use as a den, offering versatility to suit your lifestyle. Retreat to the spacious master bedroom, complete with cathedral ceiling and an ensuite luxury bath that features a tiled shower with dual shower heads, granite counter with double sinks, free-standing tub, and generous walk-in closet. Three bedrooms & full bathroom completes the upper level. Beautifully finished basement boasting 9-foot ceilings, spacious family room & game area complete with pool table. The lower level also features a fifth bedroom with an egress window and safety steps up window well, partially finished gym & generous storage/utility room. Enjoy peace of mind with a 50-gallon hot water heater, zoned irrigation system with separate meter, convenient plumbing manifold & battery backup on the sump pump. The three-car garage is fully drywalled & insulated, offering cabinets, pull-down stairs to a walk-in attic, wash tub with hot & cold water, and floor drains—ideal for washing vehicles year-round. Step outside to your private backyard oasis, designed for unforgettable gatherings with its 18x21 concrete patio, pool, charming stone fire pit area & lush lawn. The pool area is secured with two locking gates & equipped with an electric heat pump, pool cover & interior light for evening swims. Located just minutes from downtown New Carlisle, you'll have easy access to restaurants, shopping, bowling & parks—making this home the perfect blend of comfort, style & community living.







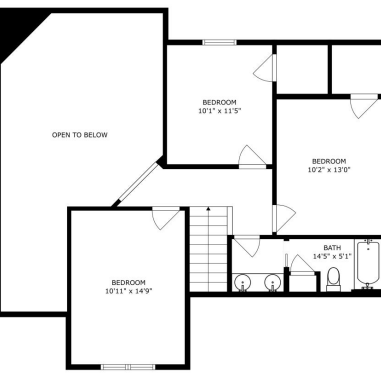




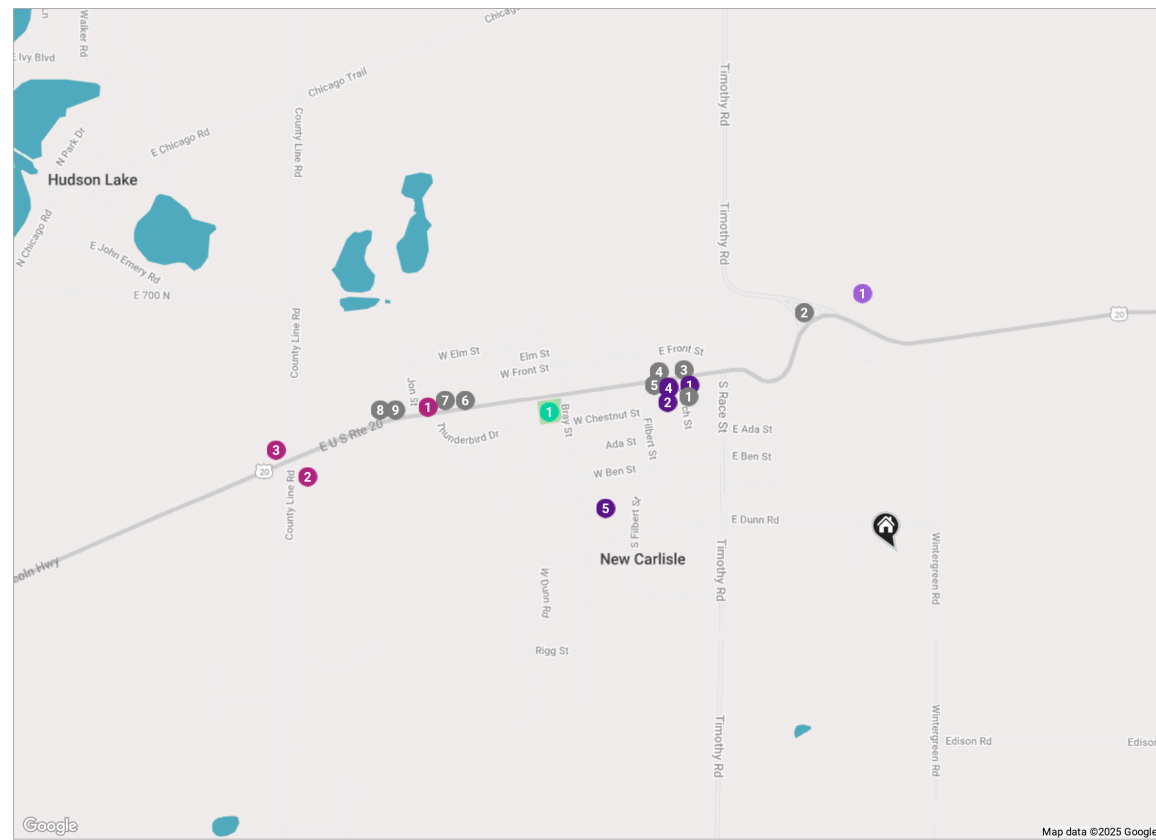
SIZES AND DIMENSIONS ARE APPROXIMATE, ACTUAL MAY VARY



SIZES AND DIMENSIONS ARE APPROXIMATE, ACTUAL MAY VARY



SIZES AND DIMENSIONS ARE APPROXIMATE, ACTUAL MAY VARY



NOTES

[illegible]



JAMIE FOLLMER

BROKER

(219) 851-2164

JAMIEFOLLMER@ATPROPERTIES.COM



All specifications, features, designs, price, assessments, taxes and materials are subject to change without notice. Depicted floor plans and architectural renderings are only an artist's impression.

