



SLOKA PHOTOGRAPHY

1175 WOODBURN COURT
INVERNESS

1175 WOODBURN COURT · INVERNESS



SLOKA PHOTOGRAPHY

@properties | CHRISTIE'S
INTERNATIONAL REAL ESTATE

LUXURY
PORTFOLIO
INTERNATIONAL



JOHN MORRISON BROKER

847.409.0297 mobile
847.381.0300 office
John@MorrisonHomeTeam.com
www.MorrisonHomeTeam.com



1175 WOODBURN COURT · INVERNESS



@properties | CHRISTIE'S
INTERNATIONAL REAL ESTATE

LP LUXURY
PORTFOLIO
INTERNATIONAL



© Paulina Angelaccio

1175 WOODBURN COURT BEAUTIFULLY POSITIONED ON A PICTURESQUE 3.2+ ACRE CUL-DE-SAC LOT IN HIGHLY SOUGHT-AFTER MUIRFIELD, THIS EXCEPTIONAL RESIDENCE OFFERS THE PERFECT BLEND OF ELEGANCE, COMFORT, AND PRIVACY!

FEATURES

A light-filled floor plan showcases soaring ceilings, skylights, 4 fireplaces, arched doorways, architectural columns, & rich Brazilian cherry hardwood floors. With over 8,000 sq ft of living space, including 5 beds, 4 full & 2 half baths, & a finished walkout lower level with a 2nd kitchen, this home is ideal for both everyday living & entertaining. A dramatic 2-story foyer with a curved staircase welcomes you, opening to a formal dining room & a stunning 2-story living room with coffered ceiling & fireplace. A private study creates the perfect work-from-home retreat. The gourmet kitchen features granite counters, high-end appliances, abundant cabinetry, breakfast bar, & a sunlit eating area with deck access. A separate patio provides additional entertaining space for. The adjacent family room, anchored by a cozy fireplace, is an inviting gathering space. The main-floor primary suite is a sanctuary, with sitting area, coffee bar, volume ceilings, private deck access, spa-inspired ensuite bath & custom walk-in closet. Upstairs, you'll find 3 generously sized bedrooms plus an expansive bonus room with laundry. Well-appointed bathrooms provide private access. The finished walkout lower level is an entertainer's dream, with spacious rec & game areas, custom wet bar, full 2nd kitchen with walk-in pantry & breakfast room, plus a craft/exercise room, 5th bedroom, & full bath. Outdoor living is equally impressive, with a large patio, built-in firepit, & expansive lawn. 4-car attached garage with epoxy flooring. New roof (2022), newer carpeting & freshly painted. Ideally located near nature preserves, with easy access to shopping, dining, interstates & Palatine & Barrington Metra stations.



JOHN MORRISON BROKER

847.409.0297 mobile
847.381.0300 office

John@MorrisonHomeTeam.com
www.MorrisonHomeTeam.com











Paulina Angelaccio



© Paulina Angelaccio



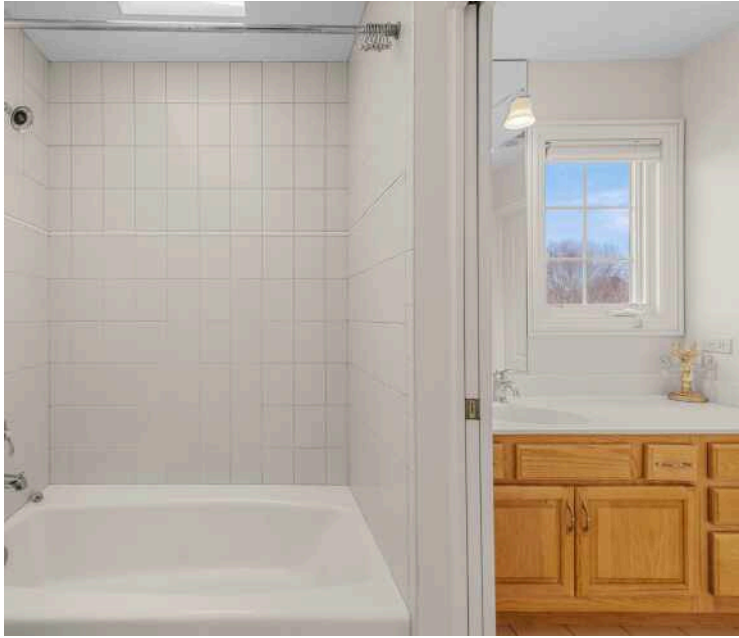


© Paulina Angelaccio



















© Paulina Angelaccio













@properties® | CHRISTIE'S
INTERNATIONAL REAL ESTATE

Leading REAL ESTATE
COMPANIES
OF THE WORLD®

LP
LUXURY
PORTFOLIO
INTERNATIONAL®

