

11887 LAKESHORE DR PLEASANT PRAIRIE

11887 LAKESHORE DR • PLEASANT PRAIRIE



DANIEL KROLL BROKER

262.308.4508 mobile
262.348.0200 office
danielk@atproperties.com

11887 LAKESHORE DR • PLEASANT PRAIRIE





11887 LAKESHORE DR

FEATURES

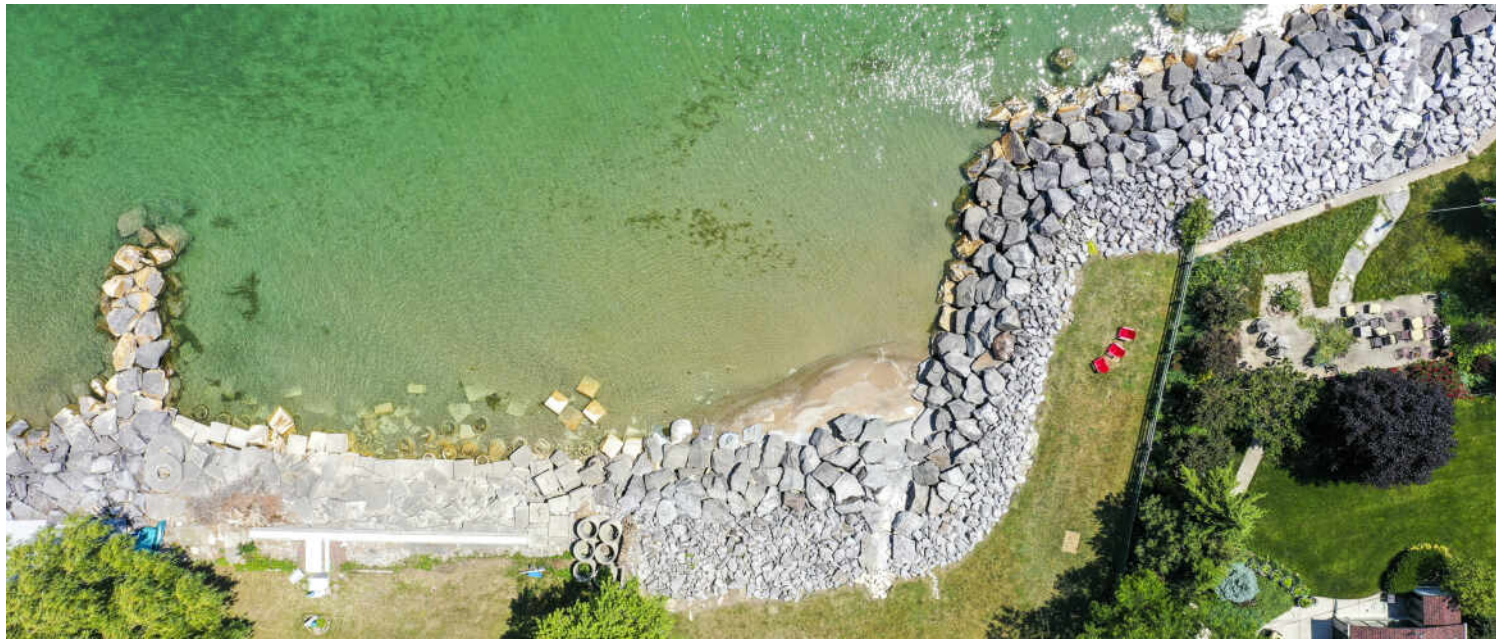
Extraordinary private Lake Michigan waterfront property in premier Pleasant Prairie location directly across from Chiwaukee Prairie. This home sits on 0.53 acres with over 100' of lake frontage and private sandy beach. The uniquely curved 140' of shoreline is protected by oversized gorgeous granite boulders that were thoughtfully installed to last. This expertly designed home boasts over 6500 square feet of elegant living space. Each room takes advantage of either sweeping lake views or vast prairie land views. The luxurious kitchen features striking green imported Italian granite countertops, a large kitchen island, and a spacious pantry. The master suite has dual dressing rooms, a gas fireplace, a balcony overlooking the lake, and a large ensuite with a double vanity and beautifully tiled double walk-in shower. The home features a new whole house generator, 2x6 construction, engineered hardwood floors, handmade solid hardwood doors, and 10' ceilings throughout. This is an entertainer's dream home with 6 bedrooms, 5 bathrooms, den/office, 2nd floor Rec Room & separate exercise room, sunroom, and a huge garage. Whether you are relaxing around the fire pit on the patio with friends, launching a kayak from your private sandy beach, or taking a nature hike through the prairie, you will never be bored! Very close proximity to the Illinois border, Prairie Harbor Yacht Club & North Point Marina, and a quick drive to downtown Kenosha with all its restaurants and shops. Experience the privacy, serenity, and seclusion of this magnificent lake home.



DANIEL KROLL BROKER

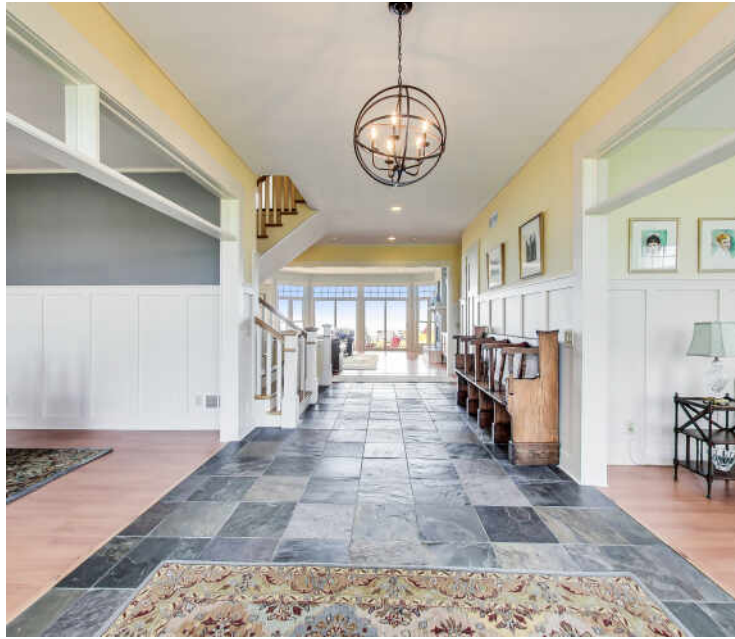
262.308.4508 mobile
262.348.0200 office

danielk@atproperties.com



BEACH





FOYER



FAMILY



BAR



DINING



LIVING





SUNROOM





BATHROOM



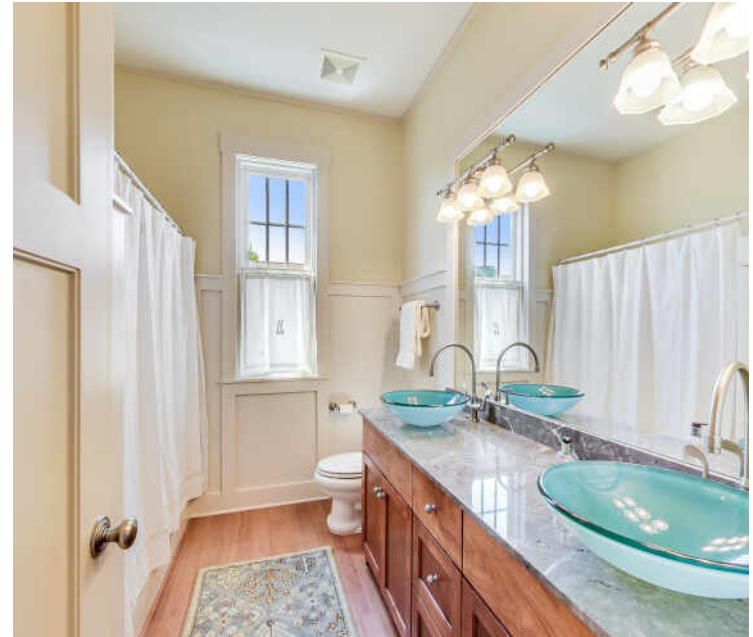
LAUNDRY



MUDROOM



BEDROOM/DEN



BATHROOM



BEDROOM



ENSUITE



PRIMARY BEDROOM



VIEW

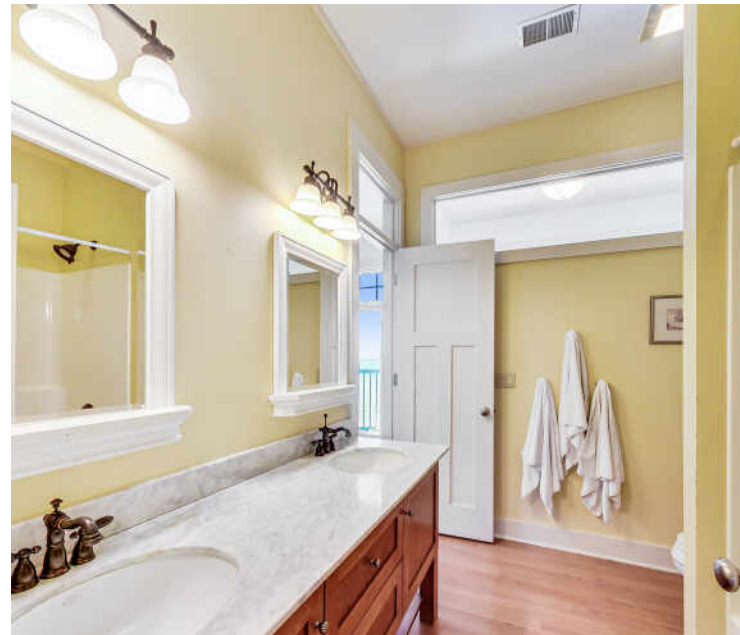




BEDROOM



CORRIDOR

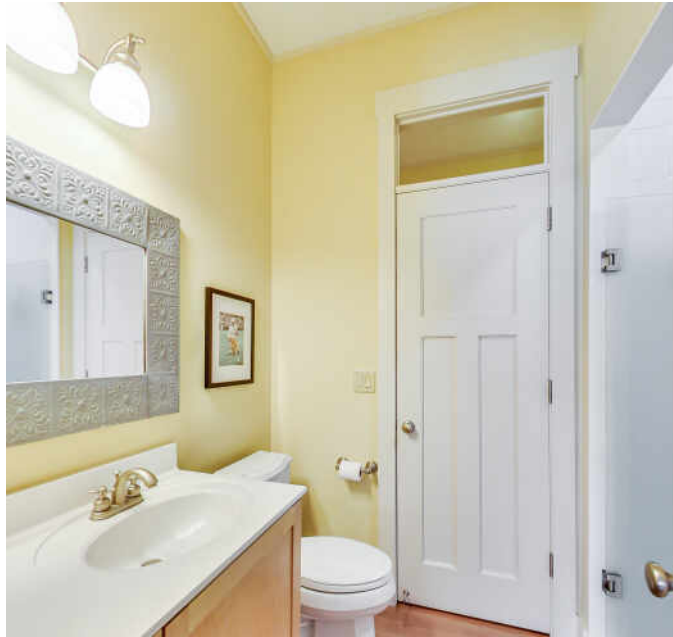


SEMI-ENSUITE



BEDROOM



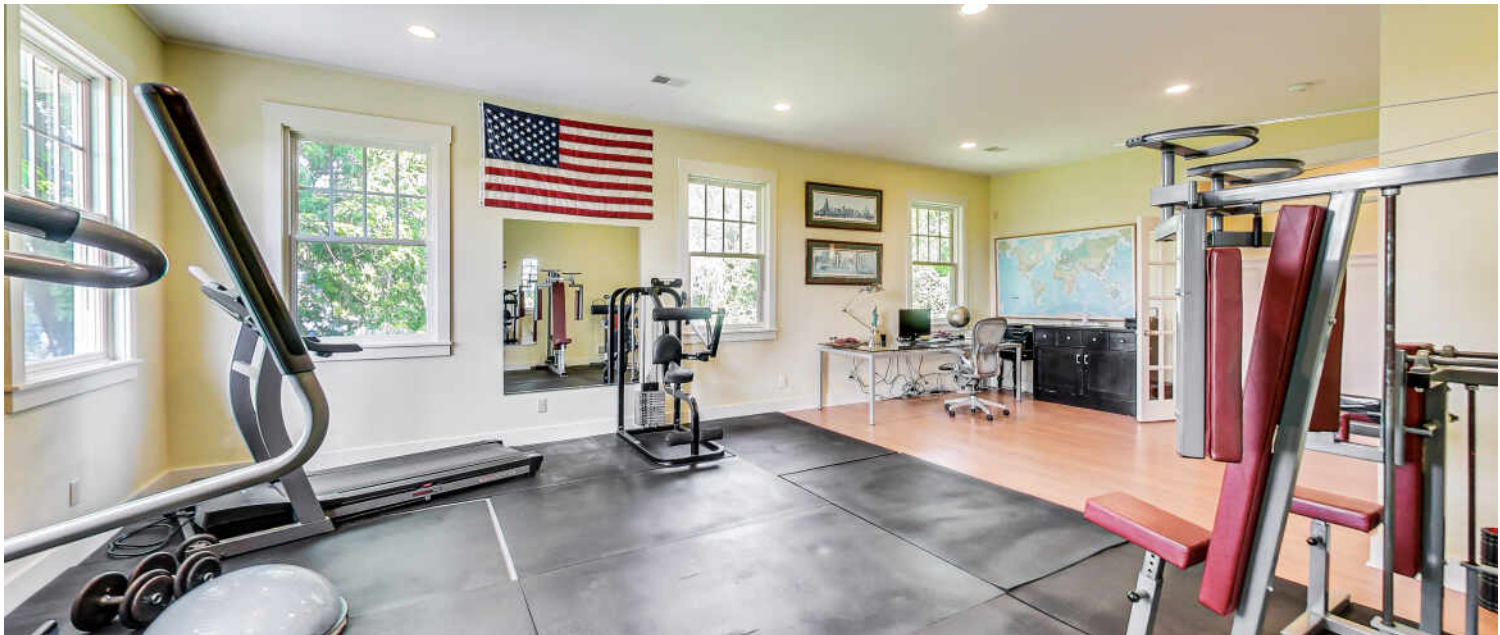


SEMI-ENSUITE





FITNESS/OFFICE





REC ROOM

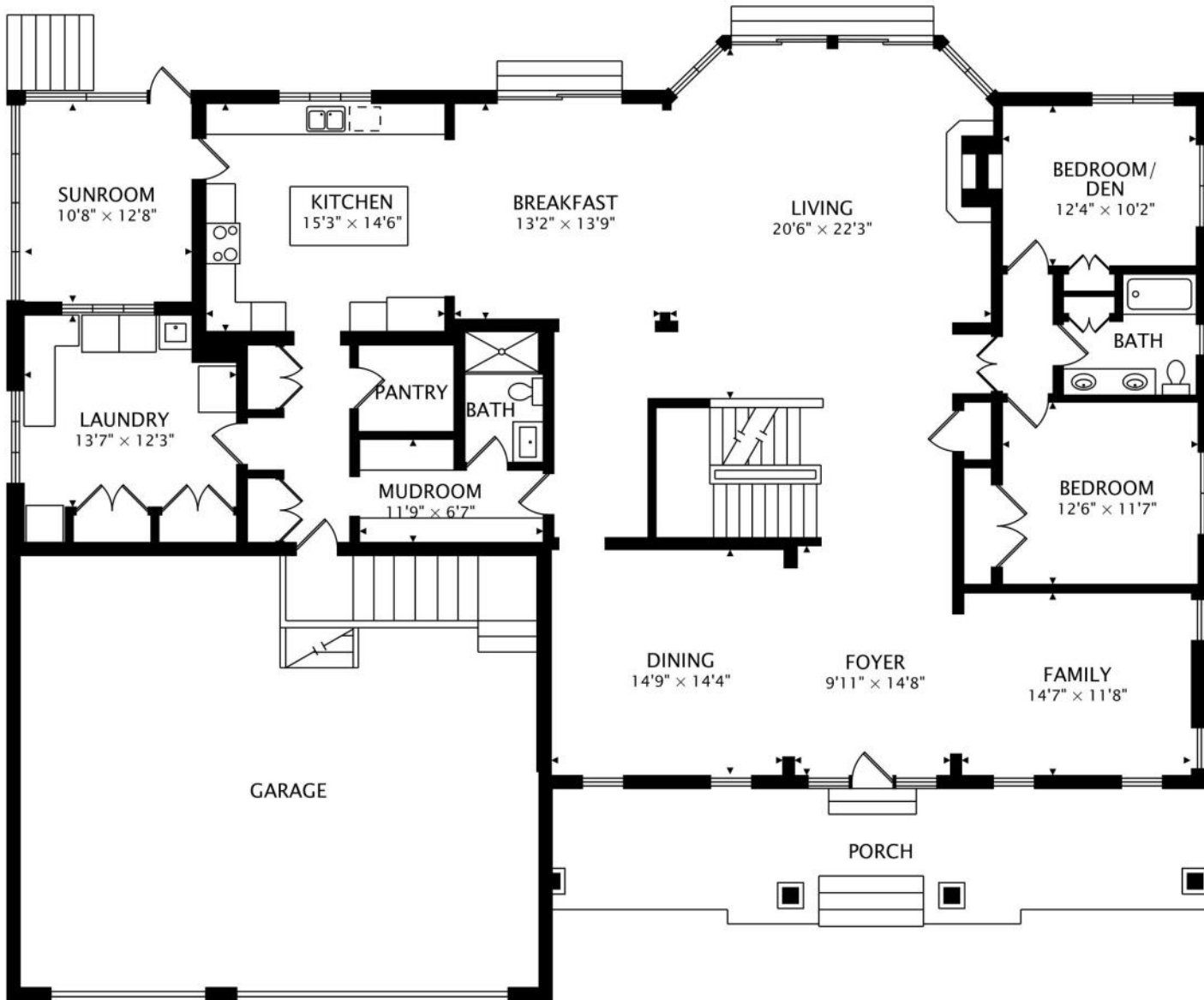




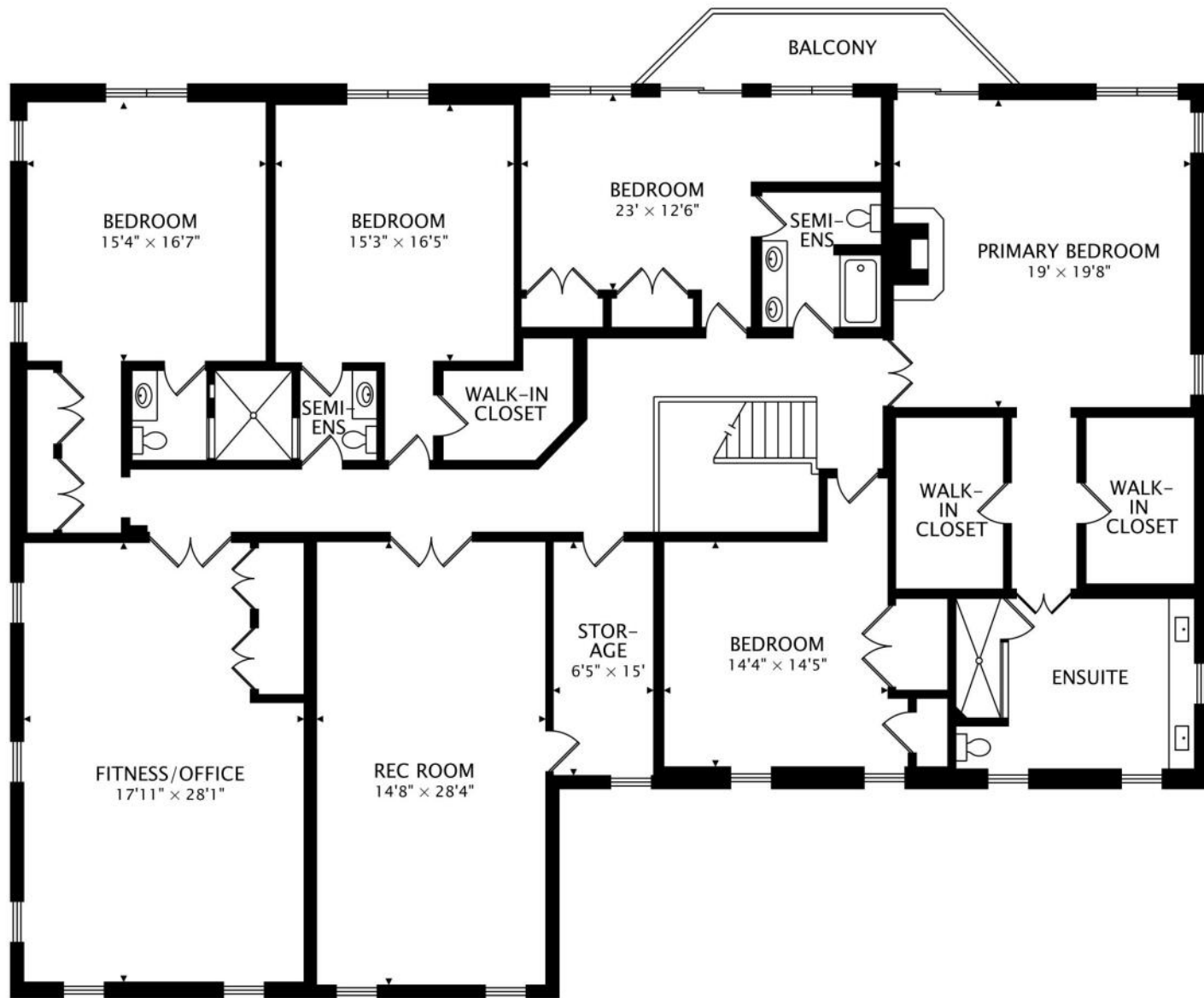
FRONT EXTERIOR







MAIN
2805 sq ft



SECOND
3817 sq ft

