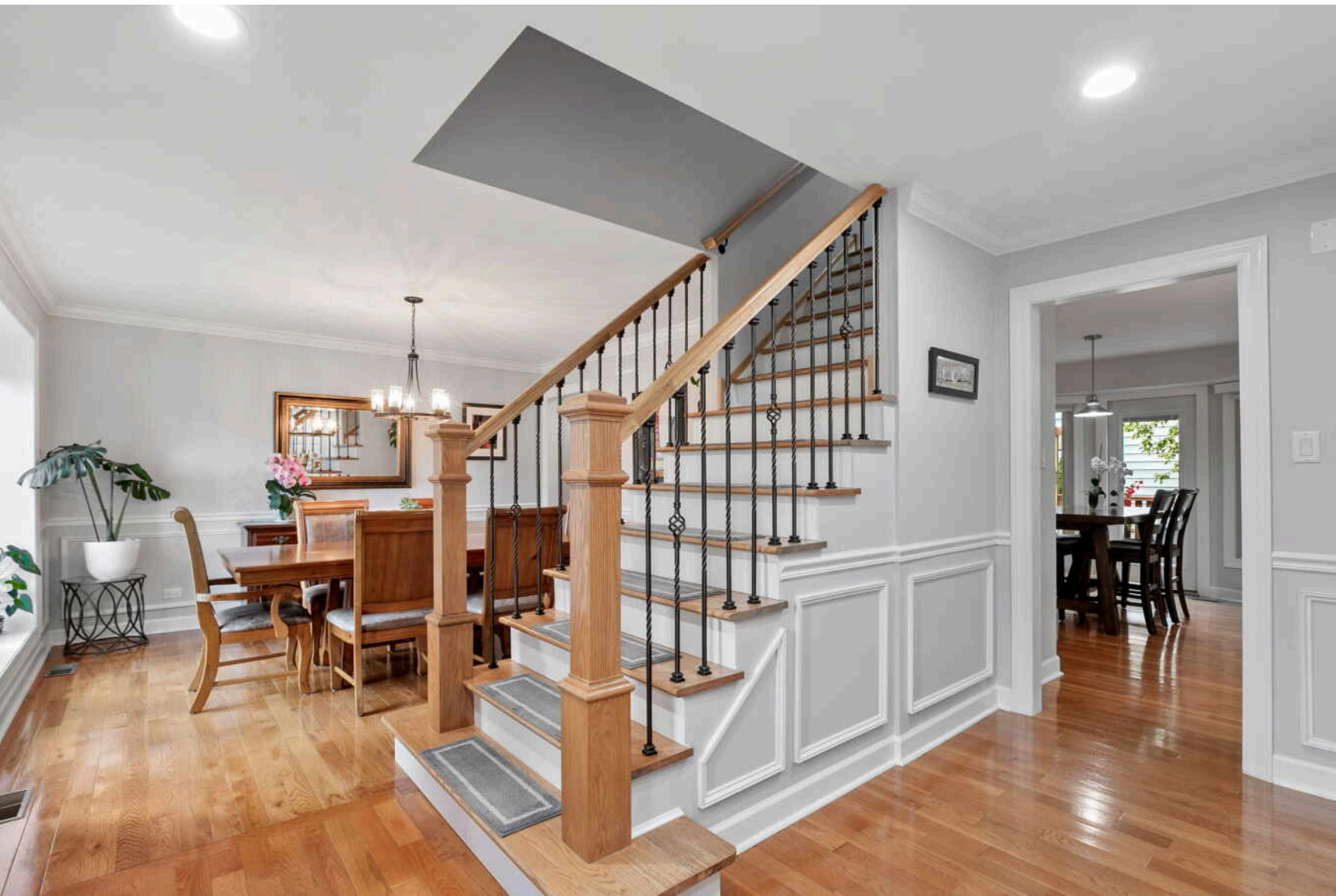


1190 FURLONG DRIVE
LIBERTYVILLE





ROOM DIMENSIONS

DINING ROOM : 13' × 12'

KITCHEN : 14' × 10'

BREAKFAST NOOK : 16' × 9'

FAMILY ROOM : 20' × 14'

LIVING ROOM/LIBRARY : 16' × 13'

LAUNDRY ROOM : 8' × 7'

PRIMARY BEDROOM : 20' × 12'

BEDROOM 2 : 13' × 11'

BEDROOM 3 : 18' × 12'

BEDROOM 4 : 15' × 13'

BEDROOM 5/OFFICE : 16' × 13'

BASEMENT REC ROOM : 27' × 26'

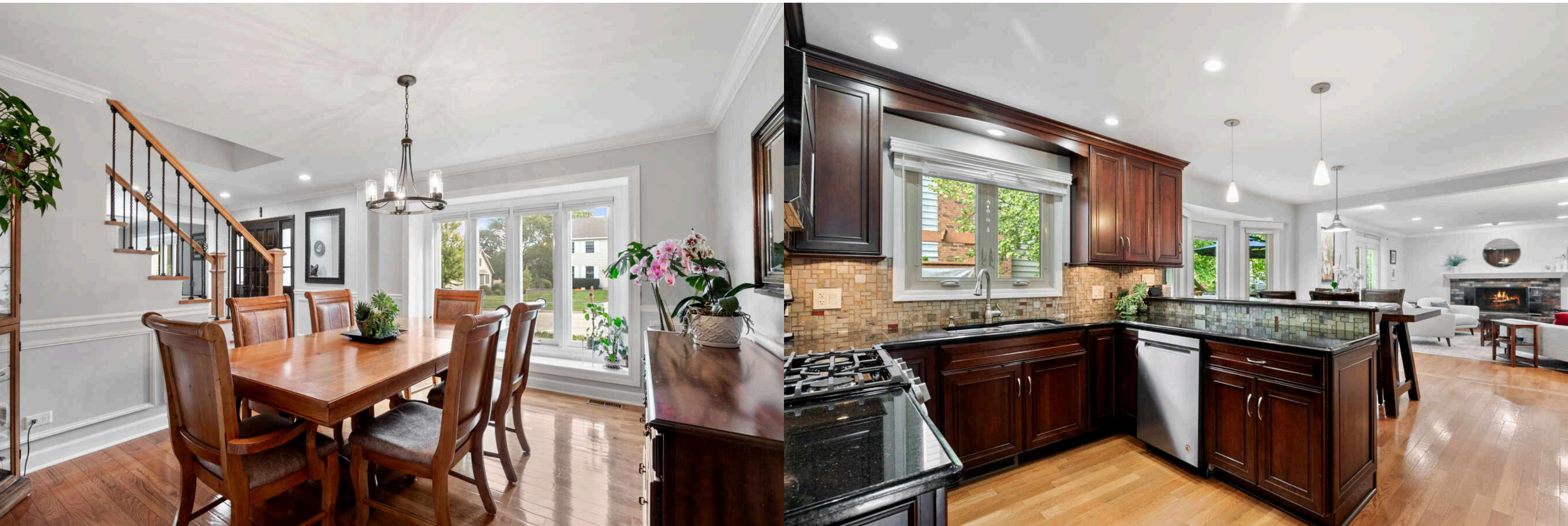
4 + 1 BEDROOM

2.1 BATH

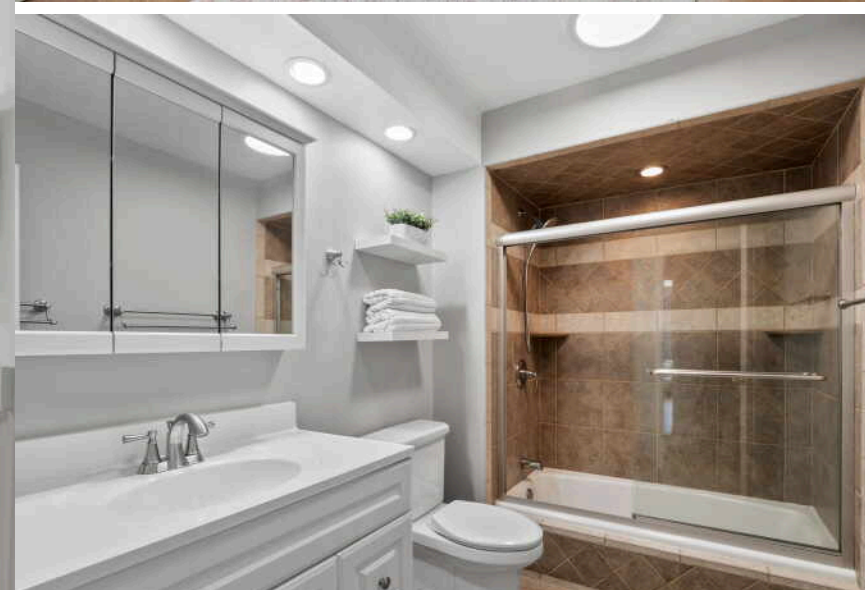
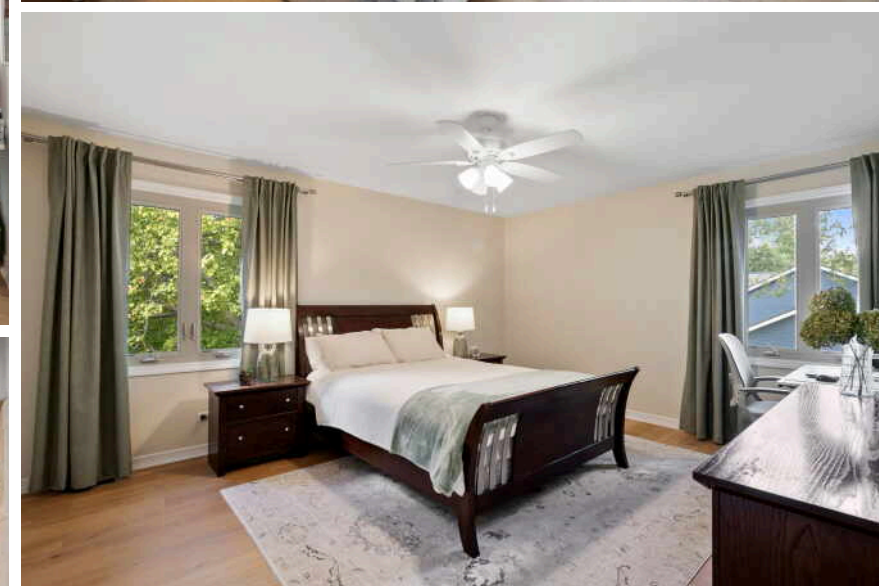
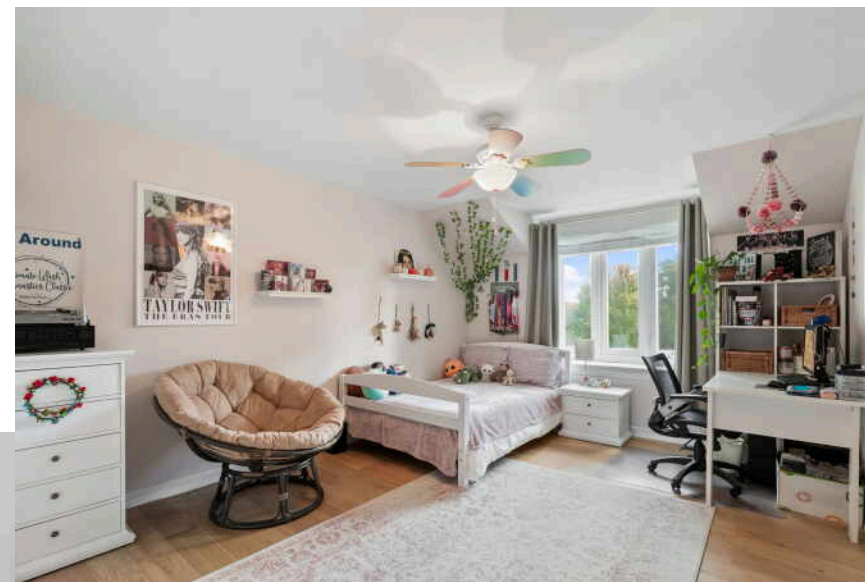
A HOUSE YOU'LL LOVE TO CALL HOME

There's something special about Red Top – tree-lined streets, friendly waves on evening walks, and the sound of children playing from yard to yard. With no fences between homes, this is a place where neighbors connect, dogs stroll past, and community truly thrives.

- Move-in ready with new roof (2024) & siding (2022)!
- Living Room/Library is flooded with natural light.
- Formal Dining Room is adjacent the kitchen for seamless entertaining.
- Timeless Kitchen with 42" cabinets, stainless steel appliances, granite surfaces, neutral backsplash. Peninsula offers breakfast bar seating & additional storage. Eat-in area with exterior access to backyard oasis.
- Family Room w/ recessed lighting, gas-start wood-burning fireplace, & French doors for easy access to oversized deck.
- Laundry room offers direct exterior access to hot tub, & houses the stacked Washer/Dryer & utility sink.
- Sunny Primary Bedroom Suite includes walk-in closet, bath w/ walk-in shower, + space to sit & relax. 3 more Bedrooms upstairs w/ large closets & ceiling fans.
- Lookout basement is finished w/ carpet, recessed lighting, an additional bedroom/office, wet bar + separate storage space.
- Lush landscaping offers fresh blooms throughout the summer months. Mature trees provide shade and privacy.
- Perfectly situated between downtown Libertyville and Mellody Farm open-air shopping/dining destination. Close to parks, forest preserves & trails.











LIBERTYVILLE OWES MUCH OF ITS EARLY GROWTH TO THE RAILROAD.

A spur on the Milwaukee Road train line brought rapid growth to the area, which was incorporated in 1882.

Today the Metra rail system provides a convenient commute for residents of this vibrant community.

Libertyville's bustling downtown district received a Great American Main Street Award by the National Trust for Historic Preservation. The downtown was rebuilt after a fire in 1895 destroyed most of the buildings; they were rebuilt with mandated brick reconstruction, giving them a singular style.

The downtown area includes bakeries, gourmet coffee vendors, and a microbrewery. In spring and summer months, residents enjoy a farmers market that has been operating for more than three decades.

In addition to a variety of restaurants, there are upscale boutiques, antique shops, and gift stores along Milwaukee Avenue.

Residents have eight miles of bike paths and numerous parks to enjoy along with the annual Libertyville Days Festival, an outdoor concert series, and other community events.

Three Metra stations and the Tri-State Tollway make for a convenient commute to downtown Chicago, O'Hare International Airport, and suburban corporate headquarters.





DAWN SULLIVAN

IL & WI BROKER

(815) 761-6504

DAWNSULLIVAN@ATPROPERTIES.COM



DAWN SULLIVAN
GROUP

@properties®

CHRISTIE'S
INTERNATIONAL REAL ESTATE