

1211 S PRAIRIE AVENUE 3901 SOUTH LOOP



1211 S PRAIRIE AVENUE 3901
SOUTH LOOP

LP LUXURY
PORTFOLIO
INTERNATIONAL

1211PRAIRIE3901.INFO

@properties



JIM MOSER BROKER

773.213.6287 mobile
773.472.0200 office
jmoser@atproperties.com
www.jmoserhomes.com

JM JIM MOSER

1211 S PRAIRIE AVENUE 3901
SOUTH LOOP





AMAZING NORTH AND EAST VIEWS FROM SPACIOUS LIVING ROOM

1211 S PRAIRIE AVENUE 3901 SPECTACULAR VIEWS FROM EVERY ROOM.

ROOM DIMENSIONS

Living Room	35'x22'
Dining Room	15'x13'
Kitchen	16'x13'
Master Bedroom	26'x13'
Second Bedroom	16'x12'
Third Bedroom	11'x12'
Study/Media Room	13'x22'

FEATURES

Rare and gorgeous 3500 s.f. NE corner residence with spectacular views from every window in the coveted "01" tier at the Luxurious One Museum Park. One of the only 10 expanded units in the building. The views are breathtaking and will amaze you with the floor to ceiling windows of the City skyline, Grant Park and Lakefront including Navy Pier, Shedd Aquarium and Natural History Museum. The large open living room and adjoining study/media room are perfect for entertaining. The gourmet kitchen is open to the living area and includes a dining area overlooking the lake and Museum Campus. Top of the line appliances with a granite breakfast bar opening into the living area. The splendid master suite has a sitting area, a large gorgeous bath, huge walk in closet and the study/media room which can be part of the master suite or opened to the living room. Separate guest wing has one en-suite bedroom, 3rd bedroom, bathroom and large laundry room with utility sink. You have to see it to experience the magical beauty of this home. One Museum Park offers luxurious amenities including a 24 hour door staff, outdoor pool, sundeck, full exercise room, gorgeous community room, game room, sauna, outdoor grilling/dining area.



JIM MOSER BROKER

773.213.6287 mobile
773.472.0200 office
jmoser@atproperties.com
www.jmoserhomes.com





LIVING ROOM WITH AMAZING LAKE MICHIGAN AND GRANT PARK VIEWS



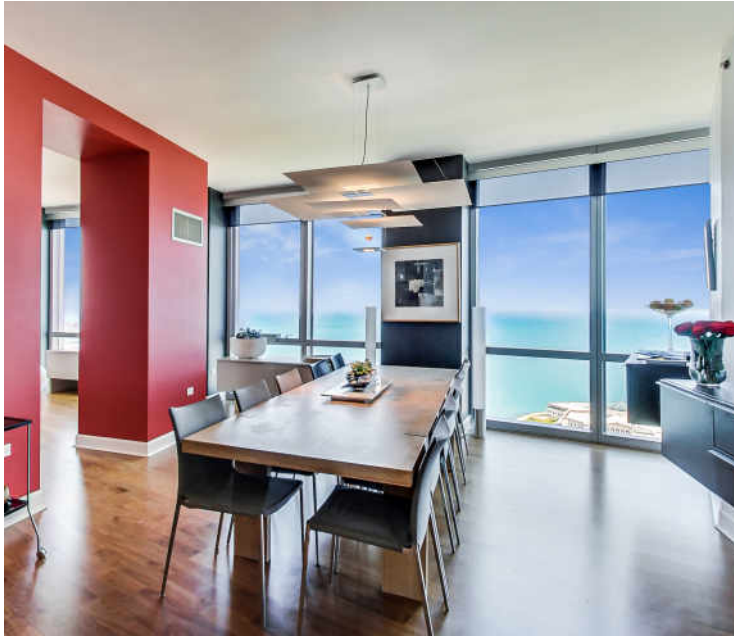
UNOBSTRUCED VIEWS FOR EVER!



SPACIOUS LIVING ROOM GREAT FOR ENTERTAINING



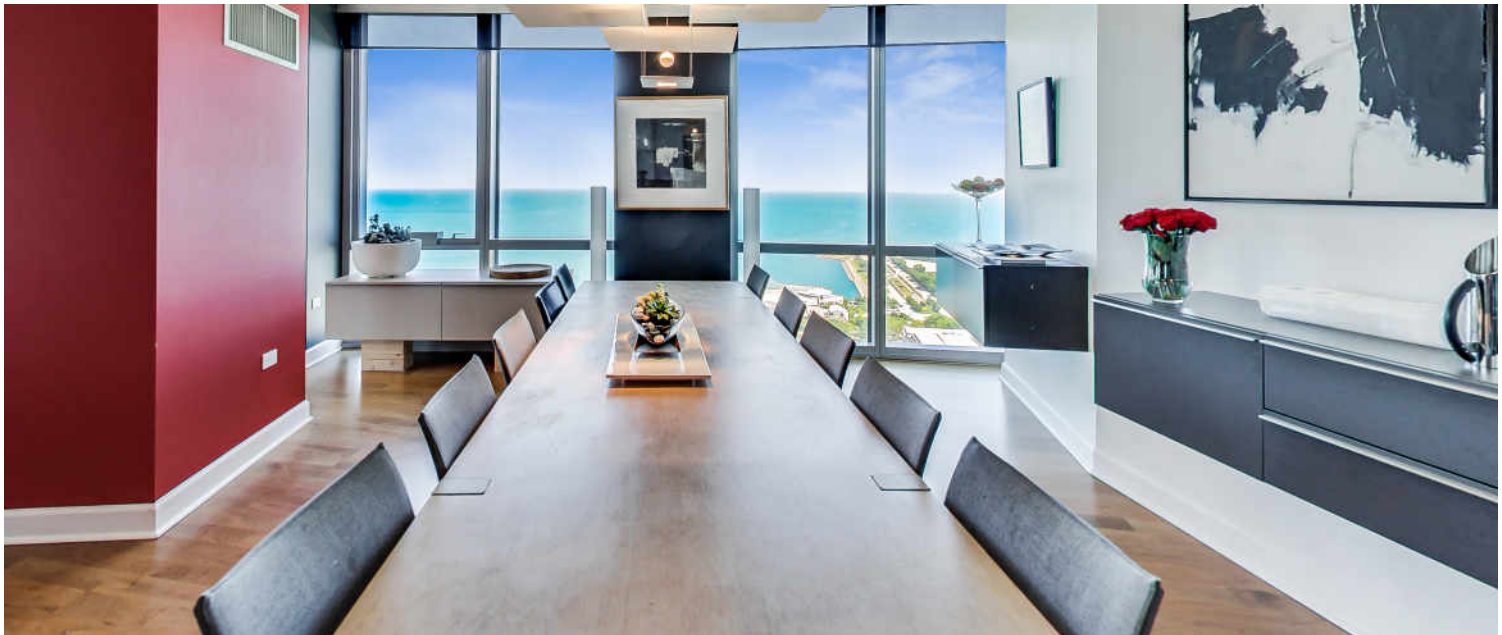
GOURMET KITCHEN OPENS TO DINING AREA AND LIVING ROOM



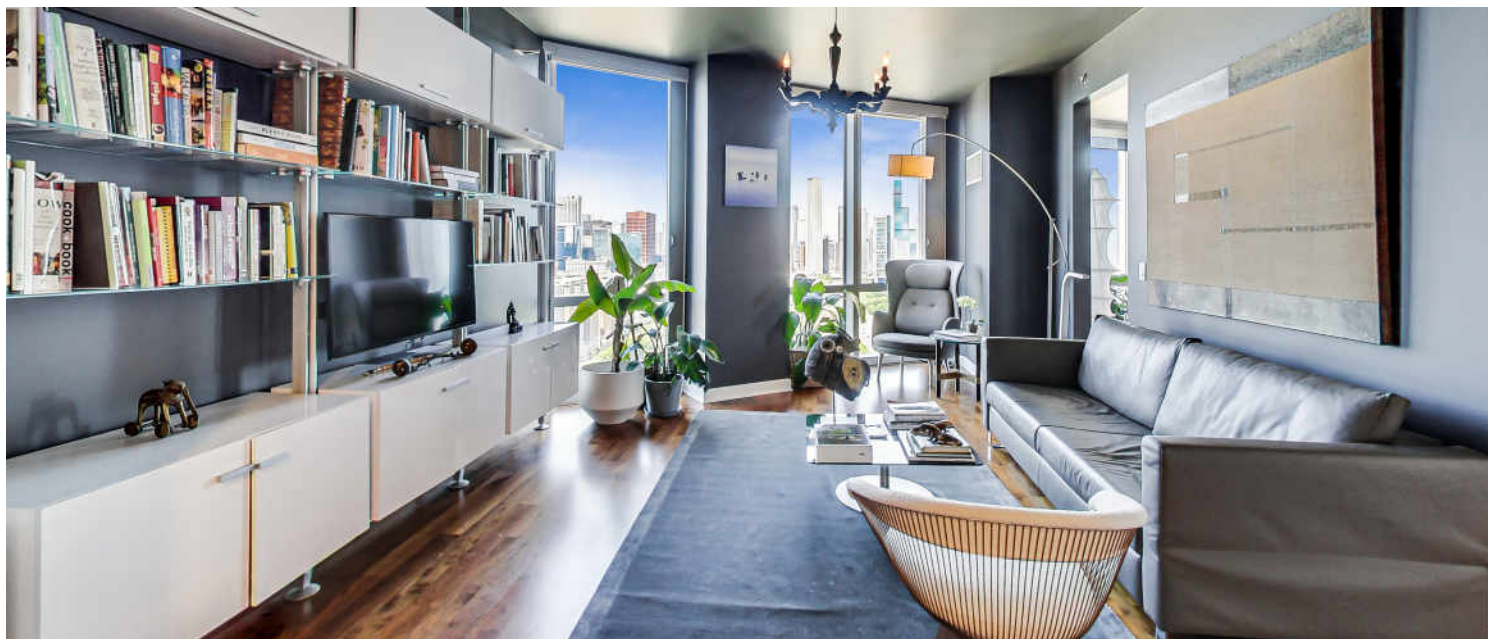
DINING AREA OVER LOOKING LAKE MICHIGAN AND MUSEUM CAMPUS



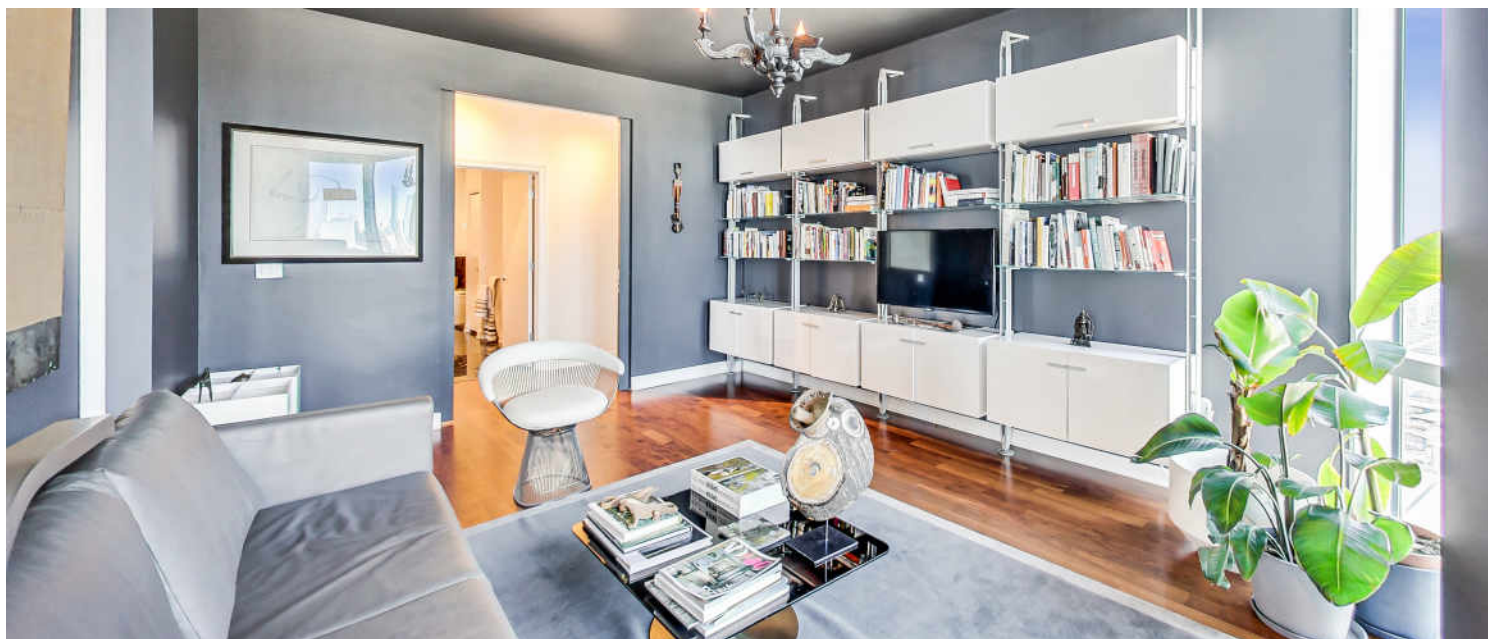
KITCHEN COUNTER OPENS TO LIVING ROOM



DINING AREA WITH FLOOR TO CEILING WINDOWS



DEN/MEDIA ROOM



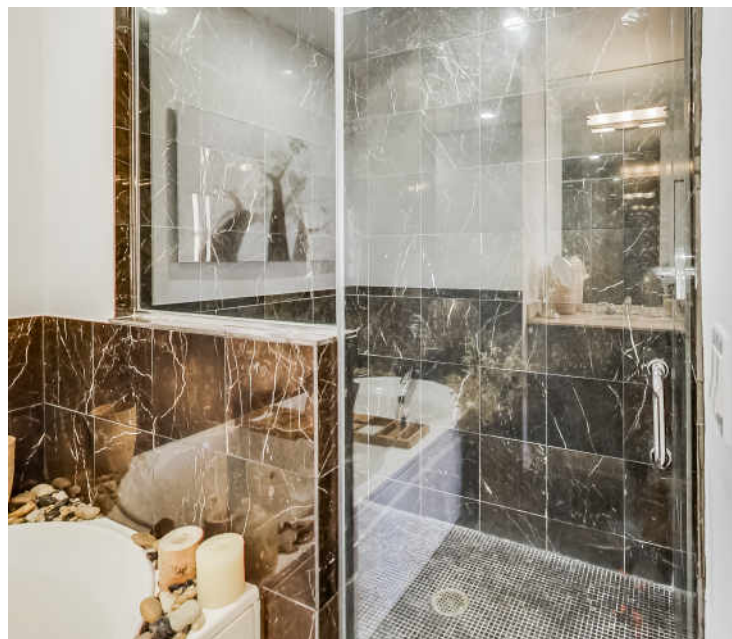
DEN/MEDIA ROOM



MASTER SUITE WITH NORTH VIEWS OVER LOOKING GRANT PARK & CITY SKYLINE



FLOOR TO CEILING WINDOWS CAPTURE THE AMAZING VIEWS



MASTER BATH WITH OVERSIZED SHOWER AND WHIRLPOOL TUB



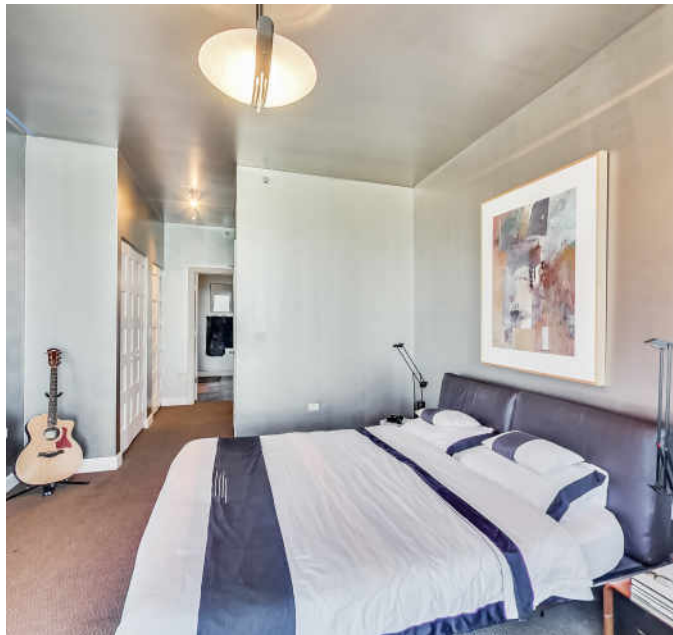
MASTER ENSUITE. DOUBLE BOWL VANITY



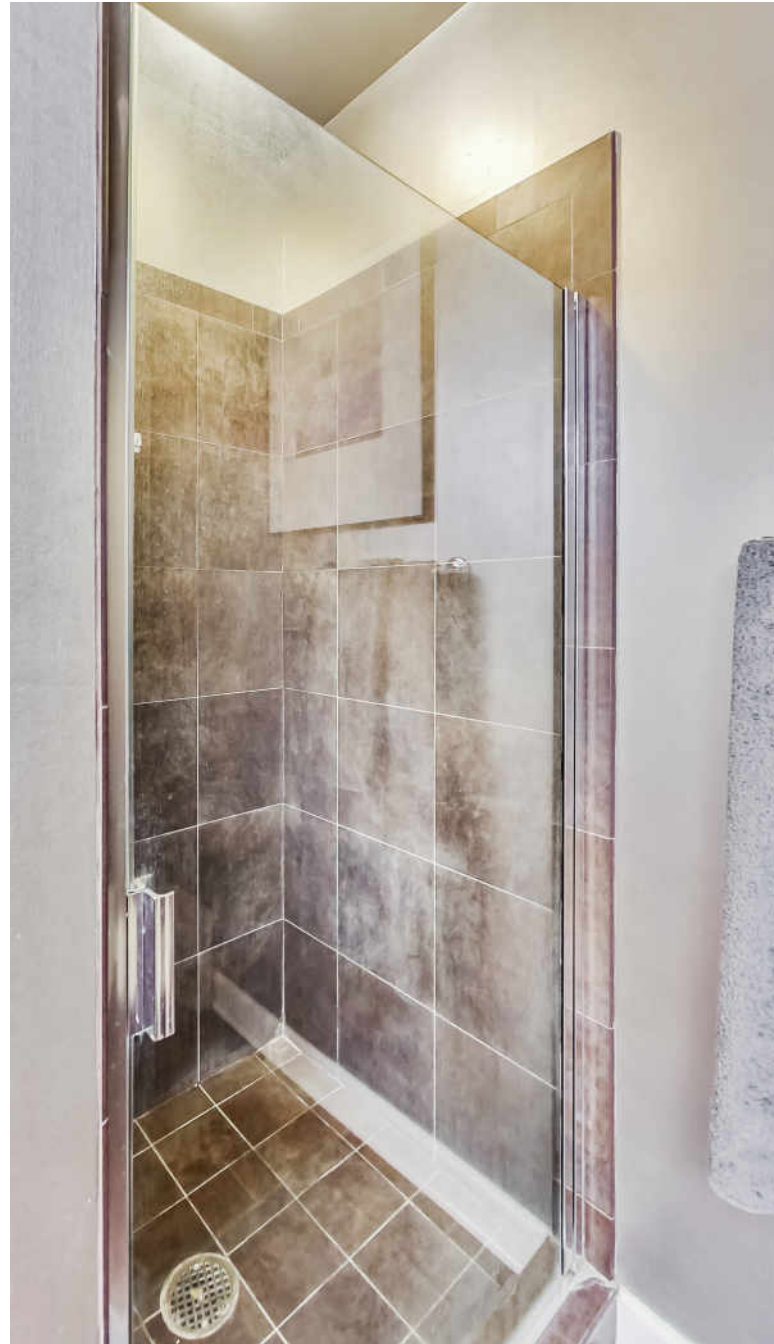
EN-SUITE BEDROOM



EN-SUITE BATH



EN-SUITE BEDROOM



EN-SUITE BATH WITH SEPARATE SHOWER AND SOAKING TUB



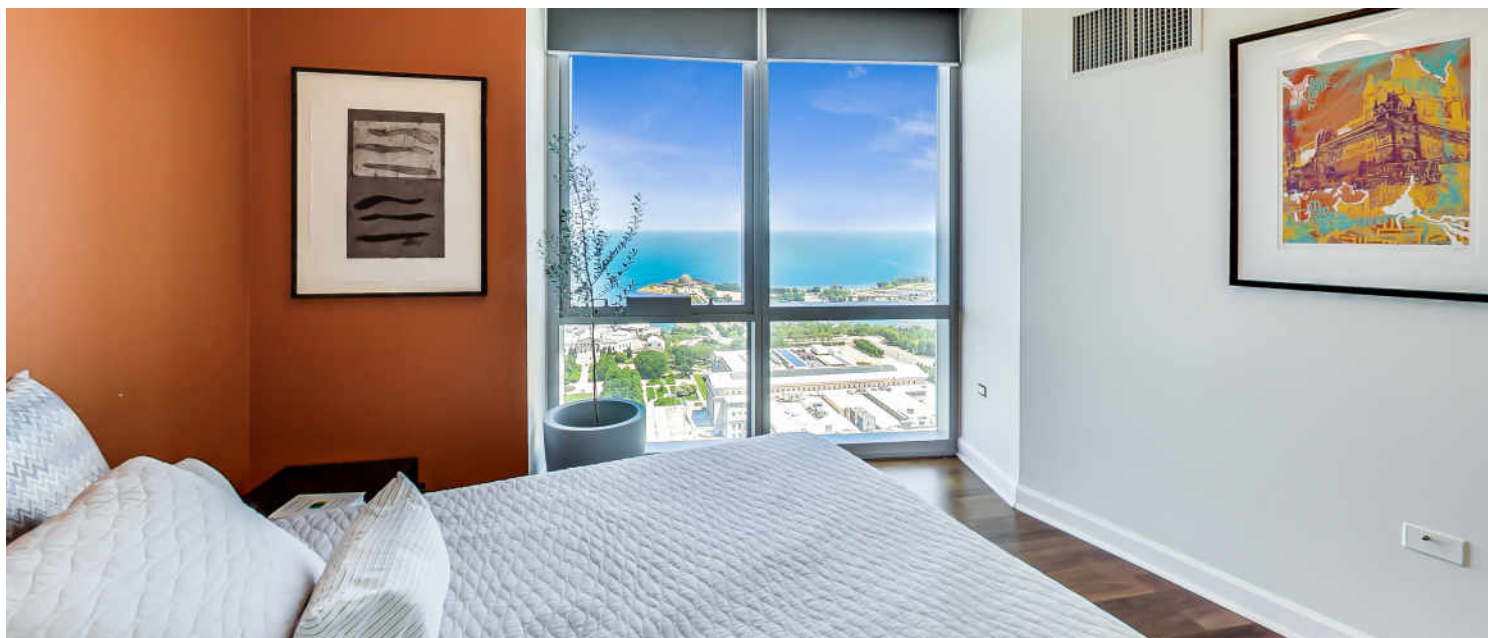
3RD BEDROOM WITH EAST VIEWS OVERLOOKING LAKEFRONT



GUEST BATH



LAUNDRY WITH SIDE BY SIDE WASHER/DRYER AND UTILITY SINK



VIEW FROM 3RD BEDROOM OVER LOOKING MUSEUM CAMPUS AND LAKE MICHIGAN



INDOOR POOL



FITNESS ROOM



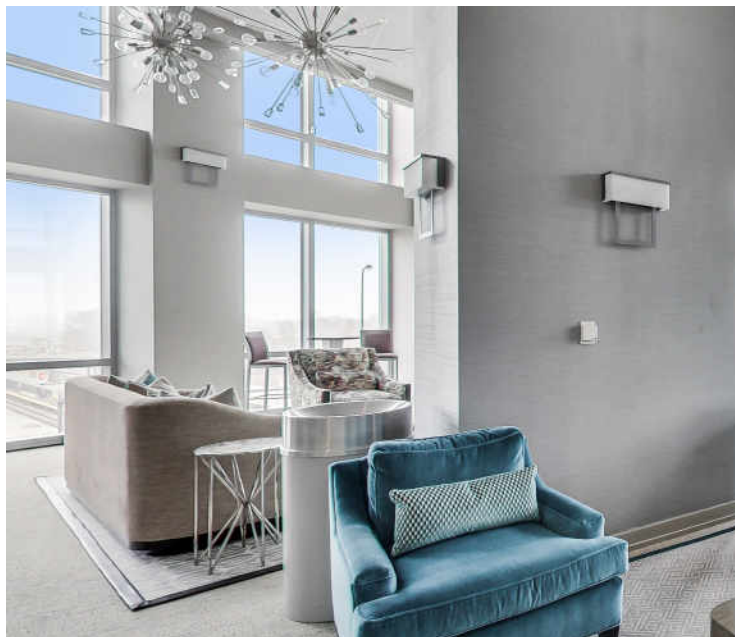
OUTDOOR POOL WITH SUNDECK



COMMUNITY ROOM



COMMUNITY ROOM



COMMUNITY ROOM

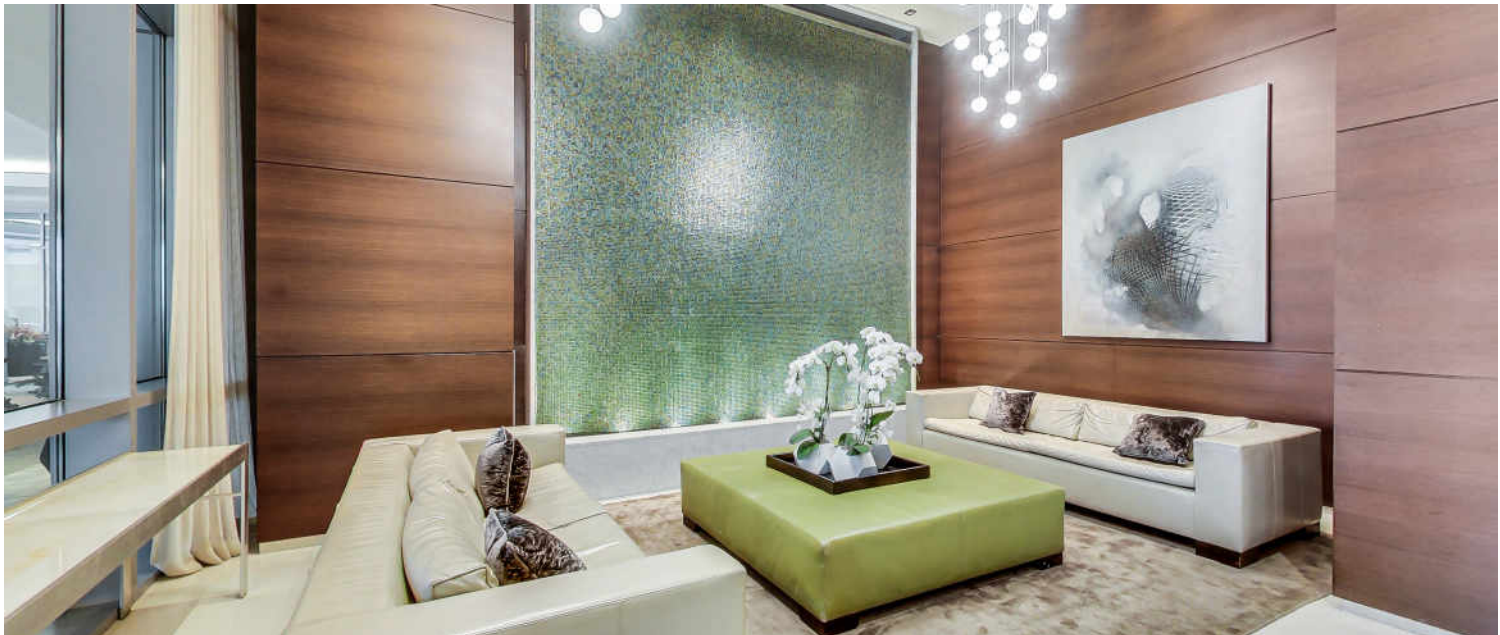




RECREATION ROOM

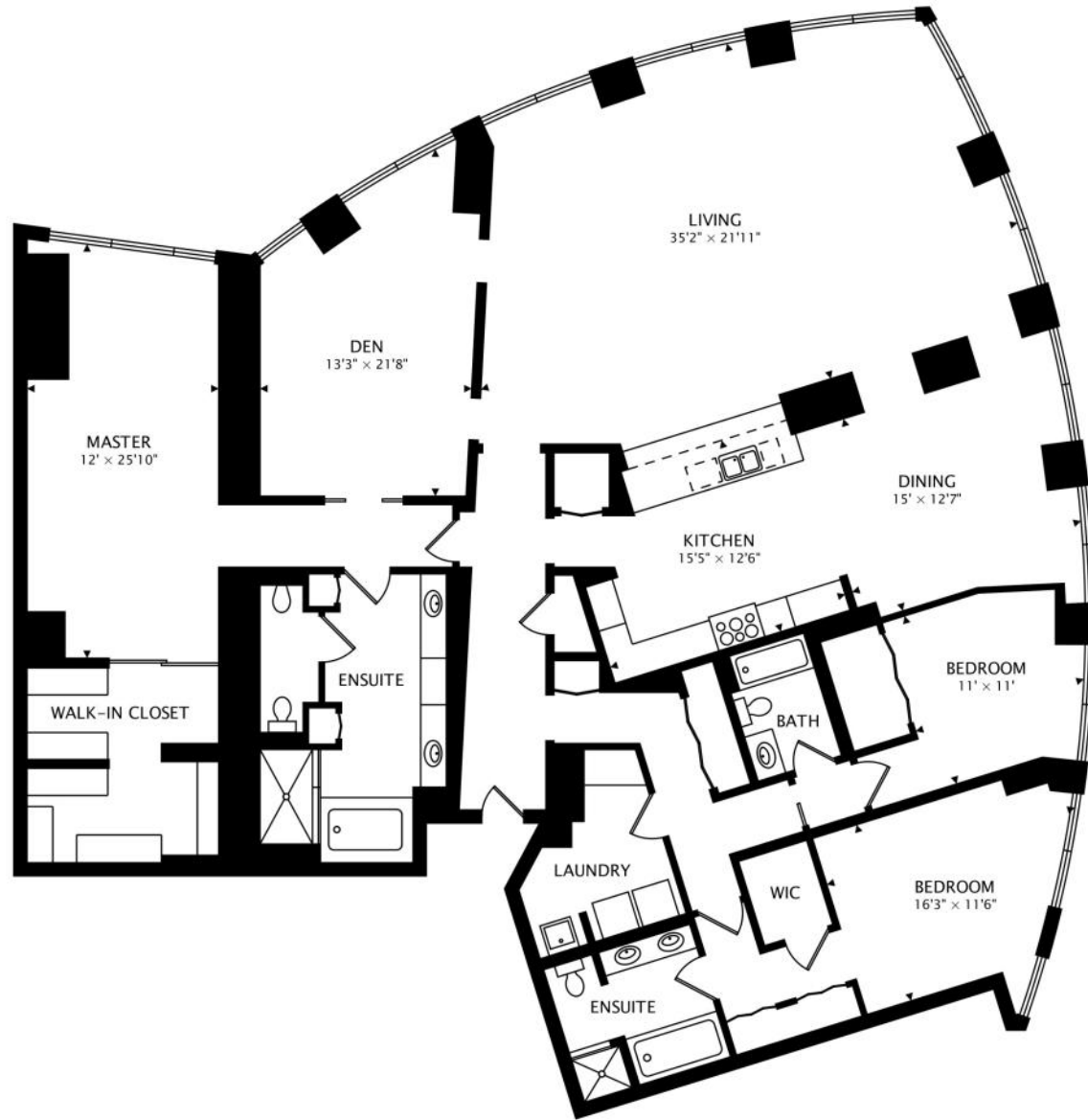


1211 S. PRAIRIE AVE. ENTRANCE

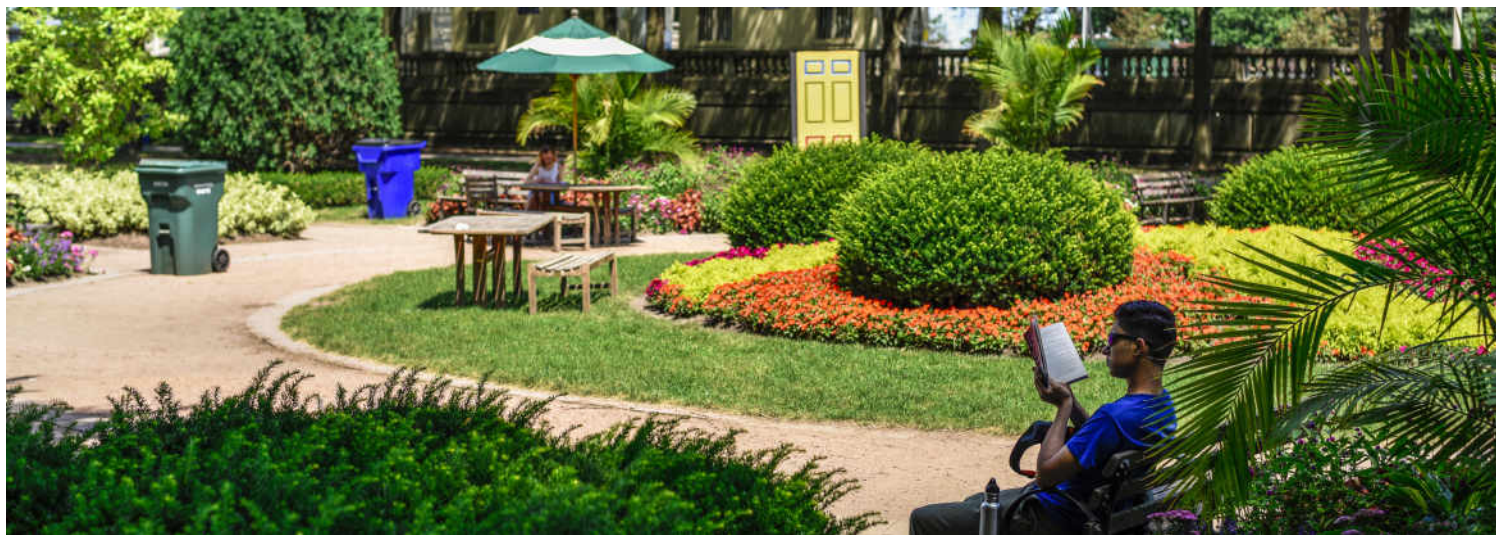
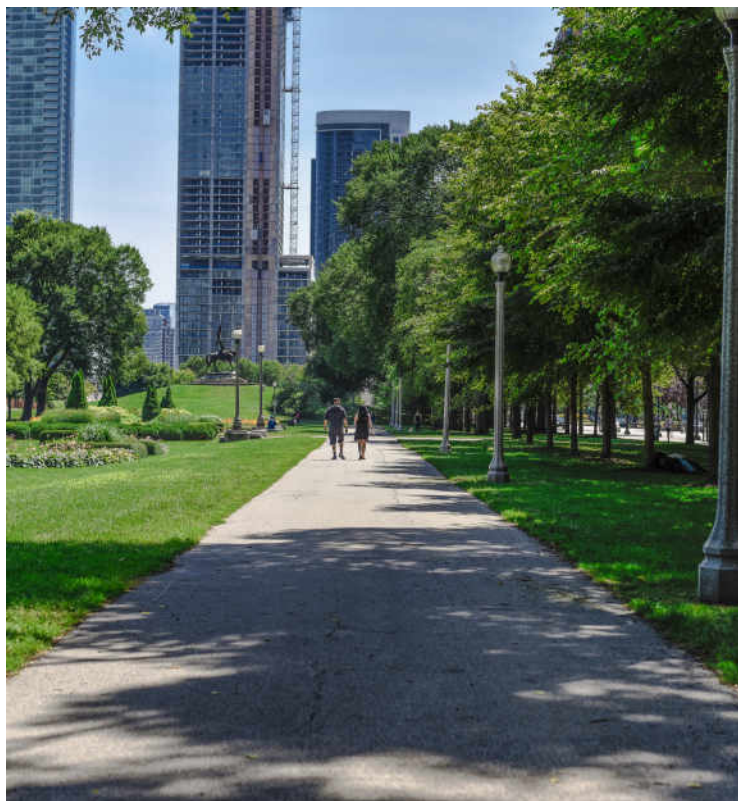
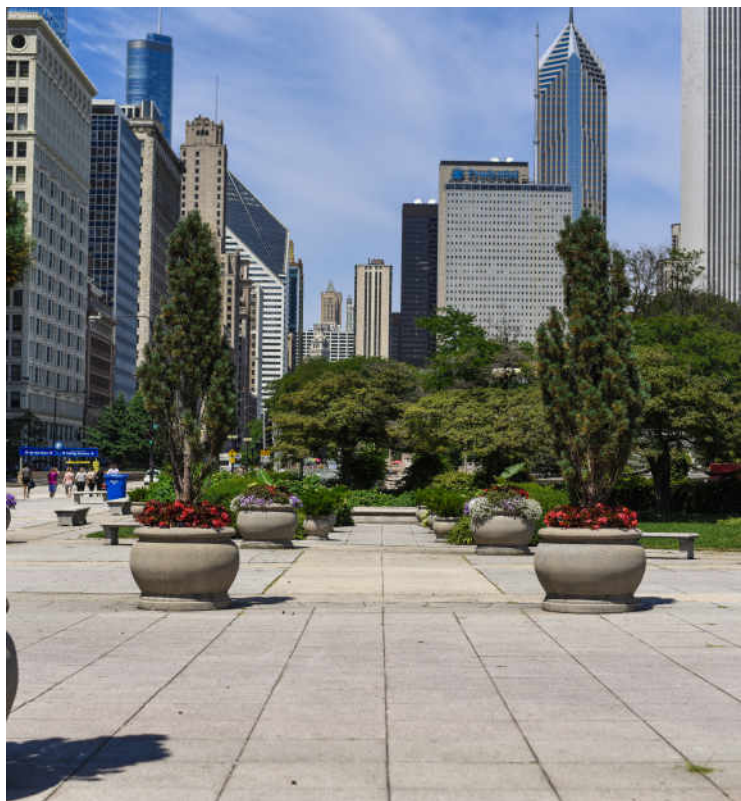


LOBBY





3395 sq ft



WE WOULD CALL THE **SOUTH LOOP** A BOOMTOWN – BUT THAT WOULD BE AN UNDERSTATEMENT.

Locals love being within easy reach of The Loop, the lakefront and some of the city's most famous cultural attractions, including the Field Museum, the Shedd Aquarium and the Adler Planetarium.

Chicago's original Gold Coast in the late 19th century, the South Loop was once home to the likes of Marshall Field, George Pullman, and Philip Armour. Today the vibrant neighborhood is known for its access to the lakefront, shops, restaurants, parks, Museum Campus, and The Loop. The area continues to evolve and is in the midst of a major transformation, with residential construction booming.

Large developments planned and underway include mixed-use projects along the Chicago River and a number of supertall skyscrapers including 1000M – a 74-story luxury condominium tower designed by Helmut Jahn. Meanwhile, several apartment buildings are under construction, bringing thousands of new rental units to the neighborhood.

Existing homes offer more choices, from high-rises and mid-rises to townhomes and single-family homes. Buyers can also find unique loft conversions in areas like Printer's Row.

The South Loop's housing boom has brought with it an influx of retailers along with eateries and nightlife on South Michigan Avenue. The Roosevelt Collection is a popular destination featuring a movie theater and an assortment of retailers.

Museum Campus is the cultural and educational hub of the South Loop and features a collection of attractions including the Field Museum, Shedd Aquarium, Adler Planetarium, and Soldier Field. Residents also enjoy being in close proximity to Northerly Island and public transportation including the CTA's Roosevelt station.

A detailed Google Map of the University of Illinois at Chicago (UIC) campus. The map shows the Chicago River flowing through the center, with the city grid on either side. Major streets like W Harrison St, W Roosevelt Rd, and E 18th St are clearly visible. Numerous bus stops are marked with blue and red icons, indicating various transit routes. The Museum Campus is located on the right side of the map, near Lake Shore Dr. The map also shows various landmarks, including the UIC campus buildings and the surrounding urban environment. The map is oriented with North at the top, and the Chicago River flows from the top left towards the bottom right. The map includes labels for streets, landmarks, and bus stops, providing a comprehensive overview of the UIC campus and its surroundings.

NEIGHBORHOOD GUIDE



RESTAURANTS

- Yolk - South Loop
1120 SOUTH MICHIGAN AVENUE, 0.2 MI
- The Chicago Firehouse
Restaurant
1401 SOUTH MICHIGAN AVENUE, 0.2 MI
- Jimmy John's
1250 S MICHIGAN AVE, 0.2 MI
- Aurelio's Pizza South Loop
1212 S MICHIGAN AVE, 0.2 MI
- Kurah Mediterranean
1355 S MICHIGAN AVE, 0.2 MI
- Giordano's
1340 S MICHIGAN AVE, 0.2 MI
- Eleven City Diner
1112 SOUTH WABASH AVENUE, 0.3 MI
- Chicago Waffles
1400 SOUTH MICHIGAN AVENUE, 0.3 MI



COFFEE SHOPS

- Little Branch Cafe
1251 SOUTH PRAIRIE AVENUE, 0.0 MI
- Starbucks
31 EAST ROOSEVELT ROAD ABS #3345,
0.2 MI



SHOPPING

- Go Grocer
1255 S MICHIGAN AVE, 0.1 MI
- Trader Joe's
1147 SOUTH WABASH AVENUE, 0.2 MI
- June 1250 Cleaners
1240 S MICHIGAN AVE, 0.2 MI
- Public Storage
1414 SOUTH WABASH AVENUE, 0.3 MI
- Jewel-Osco
1224 S WABASH AVE, 0.3 MI
- Walgreens
2 E ROOSEVELT RD, 0.3 MI
- Target
1154 SOUTH CLARK STREET, 0.5 MI

- Roosevelt Collection Shops
150 W ROOSEVELT RD, 0.6 MI

- Whole Foods Market
1101 SOUTH CANAL STREET STE 107,
0.9 MI



HEALTH CLUBS

- Snap Fitness
1212 SOUTH MICHIGAN AVENUE, 0.2 MI



HOSPITALS

- Northwestern Medicine
Primary Care South Loop-
Roosevelt Collection
1135 S DELANO CT SUITE A201, 0.6 MI



SCHOOLS

- Continuing and Community
Education at Columbia College
Chicago
1311 MICHIGAN AVE, 0.2 MI
- South Loop Elementary School
1212 SOUTH PLYMOUTH CT, 0.4 MI



ENTERTAINMENT

- Field Museum
1400 S LAKE SHORE DR, 0.2 MI
- Museum Park Roosevelt Road
Underpass
1143-1159 S LAKE SHORE DR, 0.2 MI
- Museum Campus
337 EAST RANDOLPH ST, 0.3 MI
- ShowPlace ICON Theatres at
Roosevelt Collection with
ICON•X
1011 S DELANO CT, 0.6 MI



TRANSIT

- Museum Campus/11th Street
METRA - SOUTH SHORE, 0.1 MI
- SP+ Parking
1130 S MICHIGAN AVE, 0.2 MI
- Roosevelt
CTA - RED LINE, 0.3 MI

NO REPRESENTATIONS ARE MADE REGARDING THE ACCURACY OF THE INFORMATION PROVIDED.
ALL DATA IS SUBJECT TO CHANGE AND SHOULD BE VERIFIED WITH LOCAL SOURCES.



@properties®

Leading REAL ESTATE
COMPANIES
OF THE WORLD®

LP
LUXURY
PORTFOLIO
INTERNATIONAL®

