

1216 DARNELL DRIVE
CAMBRIDGE COUNTRY NORTH - MUNDELEIN





ROOM DIMENSIONS

LIVING ROOM : 16' × 14'

DINING ROOM : 14' × 9'

KITCHEN : 16' × 12'

FAMILY ROOM : 16' × 12'

PRIMARY BEDROOM : 14' × 14'

SECOND BEDROOM : 10' × 10'

THIRD BEDROOM : 12' × 11'

MUD/LAUNDRY ROOM : 13' × 5'

DECK : 22' × 8'

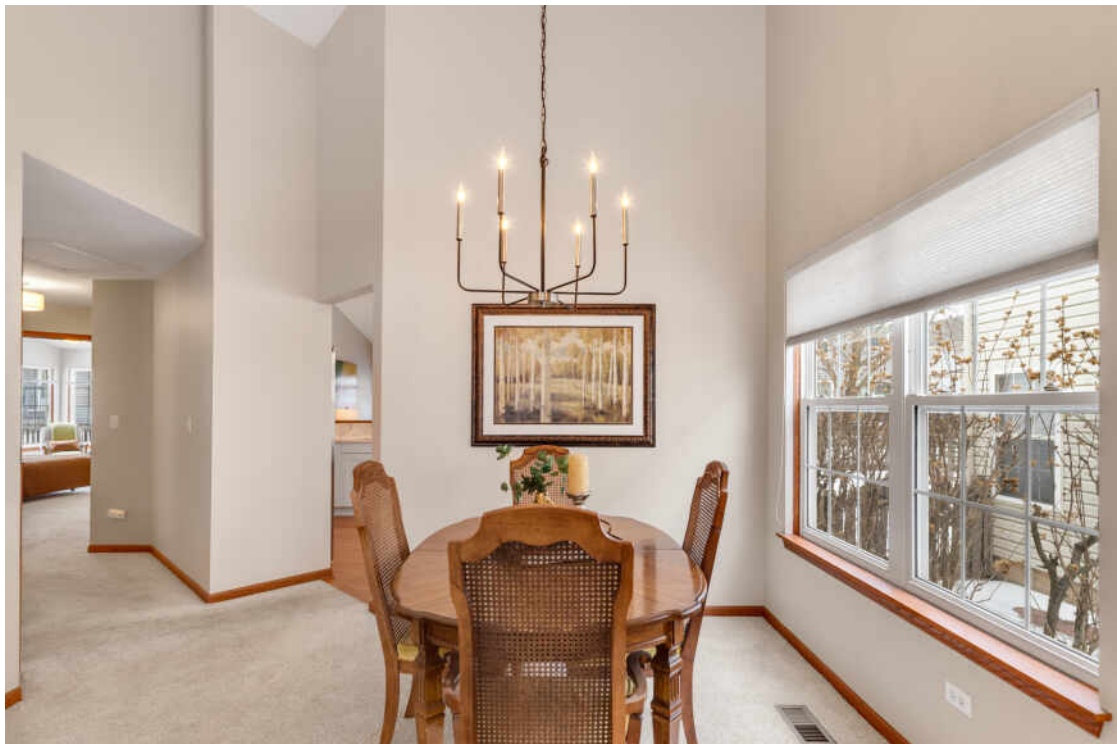
3 BEDROOM

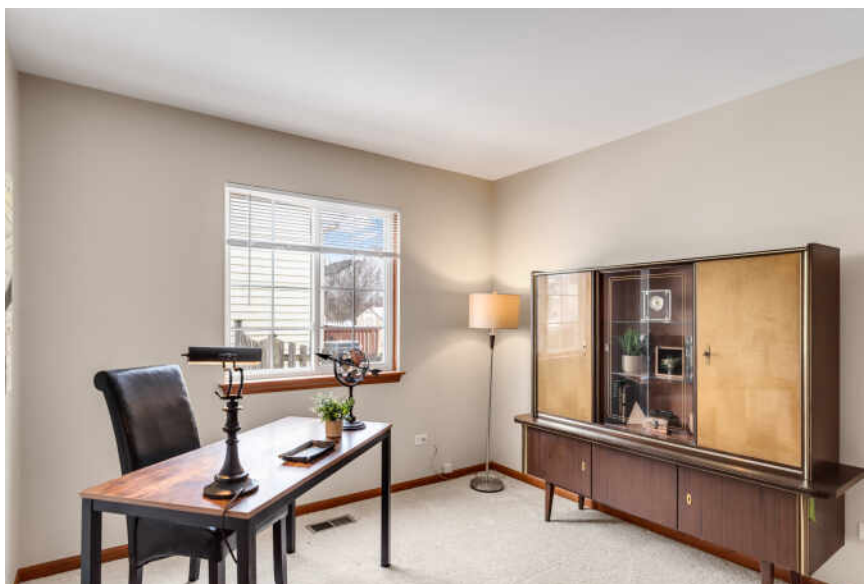
2 BATH

TAXES: \$3,689

MOVE-IN READY RANCH

Updated and freshly painted RANCH located in the desirable Cambridge Country North subdivision. Be the first to enjoy the beautifully renovated, light-filled kitchen featuring vaulted ceilings, new cabinets, new countertops, new backsplash, updated lighting, pantry, eating area, and never used stainless steel appliances. Both full bathrooms have been updated with new vanities, faucets, and new lighting throughout. The inviting family room offers a cozy gas fireplace and direct access to the deck-perfect for relaxing or entertaining. The primary bedroom suite boasts a vaulted ceiling, private bath, and walk-in closet. Main-level laundry/mudroom features new flooring, a utility sink, and ample cabinetry for storage. Exterior updates include a newer roof, siding, skylight and gutters (9/2022). Come spring, you'll be delighted by the multi-season perennial garden that adds charm and color to the yard. Ideally situated in the highly sought-after Fremont Elementary School District. The community's Ashbury Park offers a playground, ball fields, fishing pond, and scenic walking/bike paths. Just across the road is the Mundelein Park District Recreation Center featuring a water park with lazy river, indoor pool and fitness center, skating rink, ball fields, and sled hill. Within a couple of miles you'll find the Fremont Public Library, Jewel and two Metra stations-making this home as convenient as it is inviting.





TOTAL: 1424 sq. ft
 1st floor: 1424 sq. ft
 EXCLUDED AREAS: GARAGE: 371 sq. ft, DECK: 171 sq. ft, PATIO: 30 sq. ft,
 PORCH: 19 sq. ft, FIREPLACE: 15 sq. ft, WALLS: 102 sq. ft

FLOOR PLAN CREATED BY CUBICASA APP. MEASUREMENTS DEEMED HIGHLY RELIABLE BUT NOT GUARANTEED.





LOCATED IN THE HEART OF LAKE COUNTY,
MUNDELEIN IS A THRIVING COMMUNITY
THAT CONTINUES TO GROW DUE TO ITS
ABUNDANT RECREATIONAL
OPPORTUNITIES, FRIENDLY COMMUNITY,
AND CONVENIENT TRANSPORTATION
OPTIONS.

Mundelein celebrates its history with a popular annual festival that includes musical performances, a parade, carnival, car show, fireworks, and more. The village also has a craft beer festival, farmers market, and an art festival.

Once a popular resort area for city dwellers looking to escape the heat, Diamond Lake remains one of the village's gems. The recreation area, one of 33 in the community, stretches over 100 acres with a pristine lake, sandy beaches, and shaded picnic areas as well as a floating sports park, paddle boat, and kayak rentals.

In addition to the beach, residents can enjoy a golf course, bike trails, community theater, and museum. The village's downtown area has been redeveloped and there are various commercial areas.

Residential areas include a diverse mix of housing styles including new construction and mixed-use developments.



NOTES



KRYSTYNA FRITZ

(847) 894-1381

KFRITZ@ATPROPERTIES.COM

WWW.KRYSTYNAFRITZ.COM



All specifications, features, designs, price, assessments, taxes and materials are subject to change without notice. Depicted floor plans and architectural renderings are only an artist's impression.

