

1225 BLACKTHORN LANE
DEERFIELD

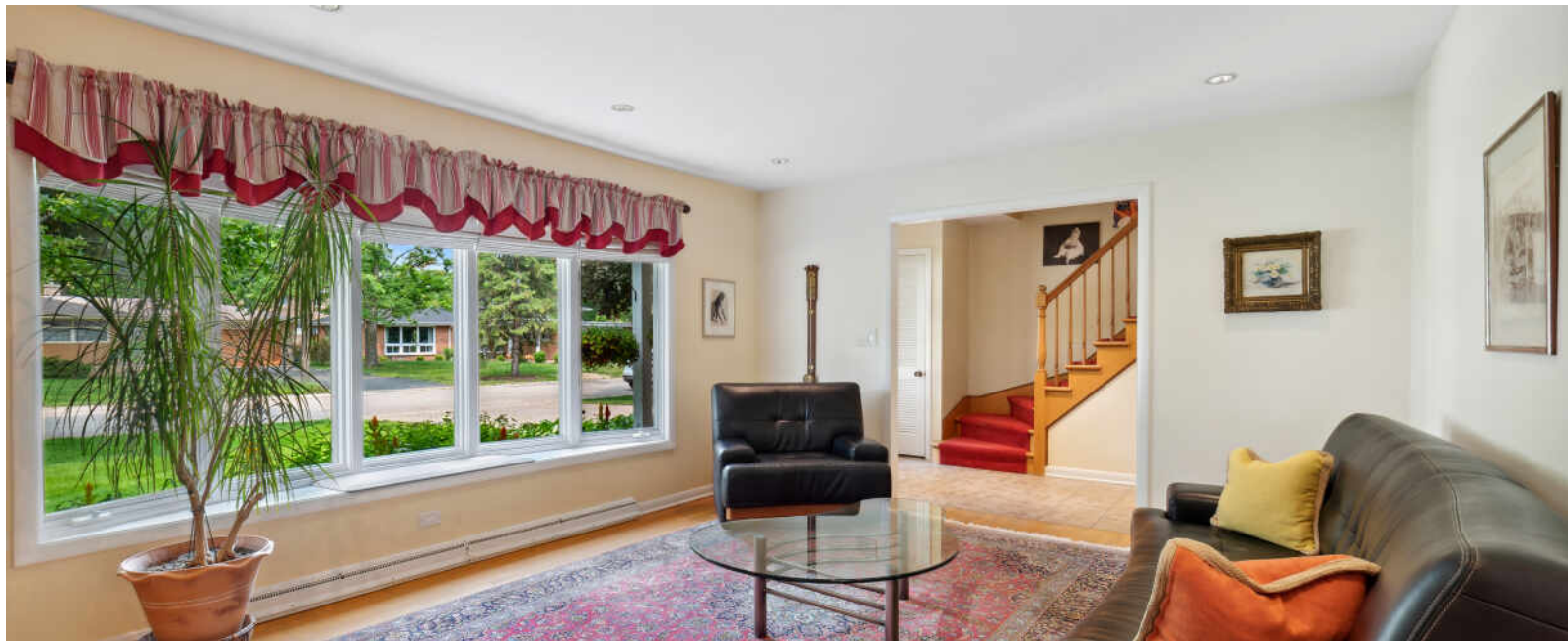


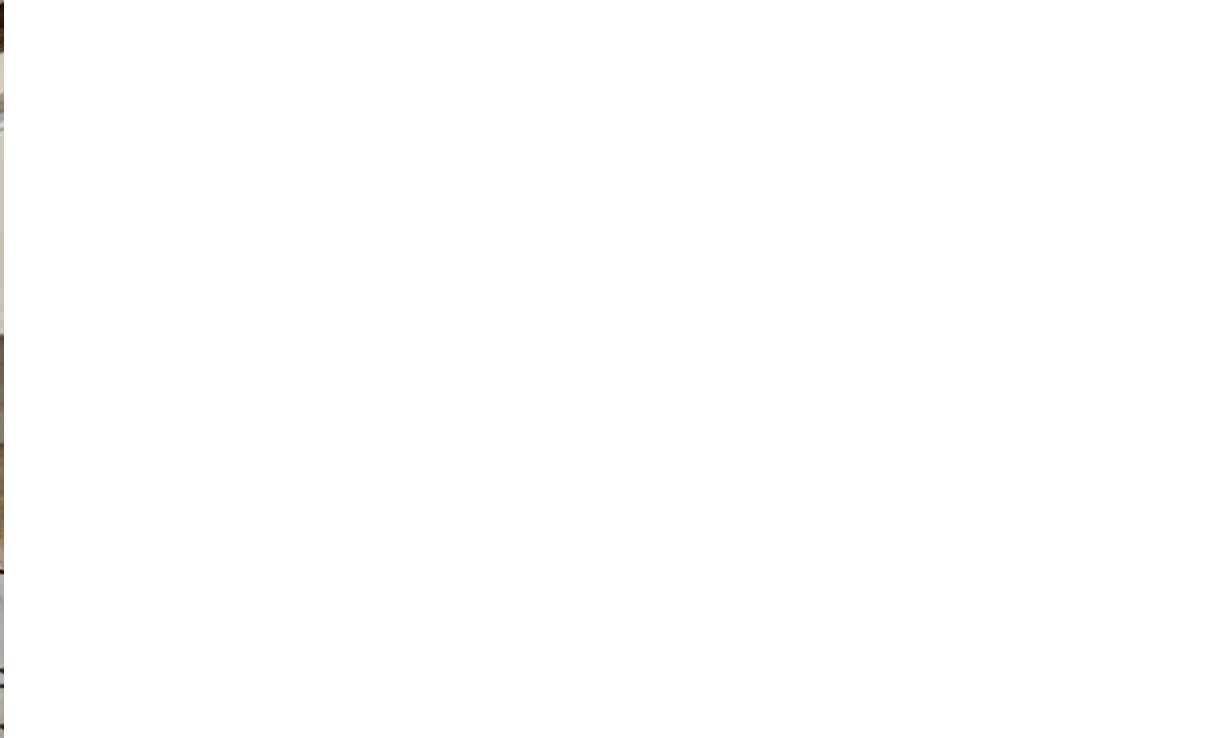


PICTURE PERFECT COLONIAL

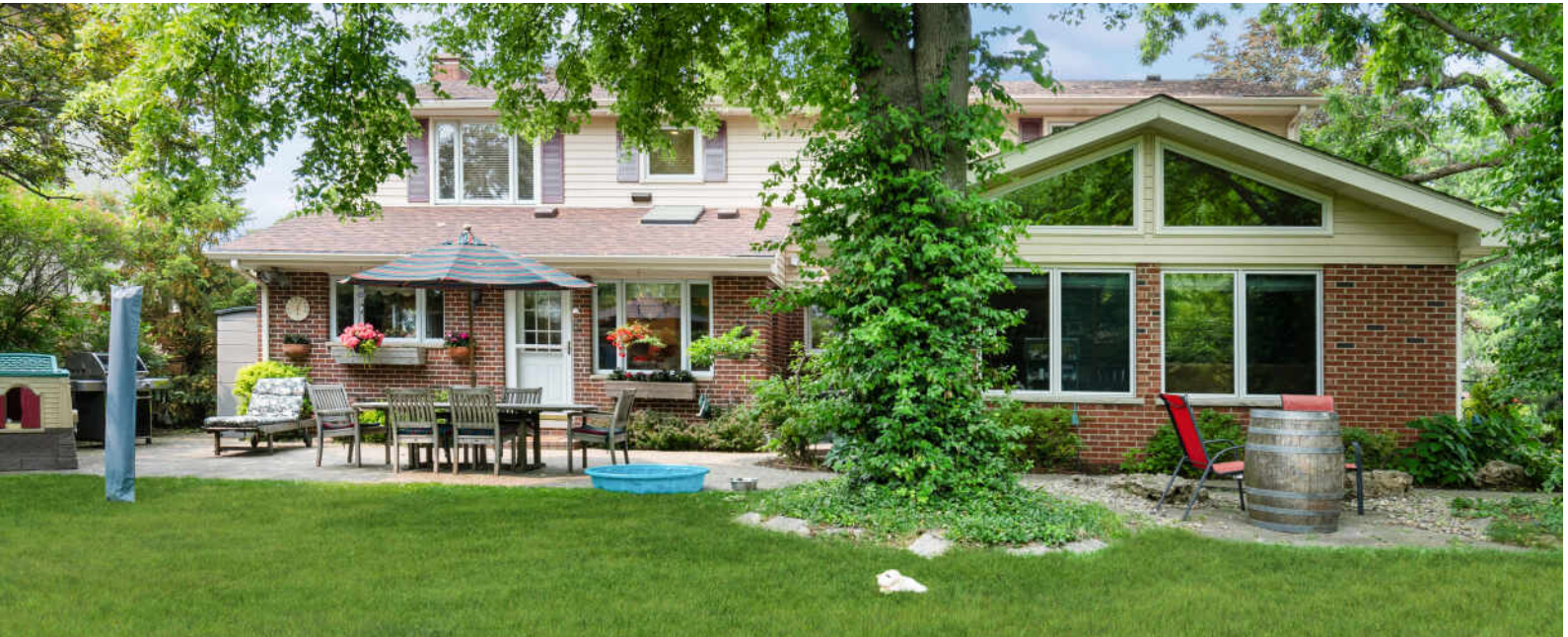
This classic two-story colonial has undergone two additions and much updating to create a spacious home that is ready to move into and enjoy. Sunny eat-in kitchen has been expanded and updated with granite countertops and top-of-the-line stainless appliances. Primary suite offers beautifully expanded and updated bath, office/ sitting room and large walk-in closet. Three additional upstairs bedrooms share a remodeled hall bath. Partially finished basement plus two-car garage, brick paver driveway and extra parking pad. Set on a pretty lot featuring fully fenced backyard with inviting brick paver patio and garden shed. Located in sought after northeast Deerfield, just one block from Walden elementary school and playground, close to Deerspring Park with tennis courts and pool. Sellers require late September possession.

4 BEDROOM
2.1 BATH
TAXES: \$16,655











DEERFIELD BOASTS THE BEST OF BOTH
WORLDS - THE AMENITIES AND
CONVENIENCES OF CITY LIVING WITH THE
CHARM OF A SMALL TOWN.

Touting a variety of housing options, Deerfield offers condominiums, townhomes, and single-family homes in a wide range of architectural styles and prices.

When it comes to amenities, Deerfield checks all the boxes. Deerfield Square includes an assortment of shops, restaurants, and boutique workout studios, while the Sachs Recreation Center offers an indoor pool, tennis courts, gymnasiums, fitness classes, and more. Another popular attraction is the Deerfield Historic Village, where residents and visitors can explore buildings dating back to the 1800s.

The community is home to Deerfield High School, which ranks among the top high schools in Illinois, according to *U.S. News and World Report*. With two Metra stations and proximity to the Tri-State Tollway and Edens Expressway, Deerfield puts residents within easy reach of downtown Chicago, O'Hare International Airport, and numerous corporate headquarters.



SUSIE RAFFEL & ISRAEL FRIEDMAN

(847) 921-1209 | 847-921-1207

SUSIEANDISRAEL@ATPROPERTIES.COM

SUSIEANDISRAEL.COM



CHRISTIE'S
INTERNATIONAL REAL ESTATE

1225BLACKTHORN.INFO

All specifications, features, designs, price, assessments, taxes and materials are subject to change without notice. Depicted floor plans and architectural renderings are only an artist's impression.

