

1234 DEPOT STREET #203
GLENVIEW

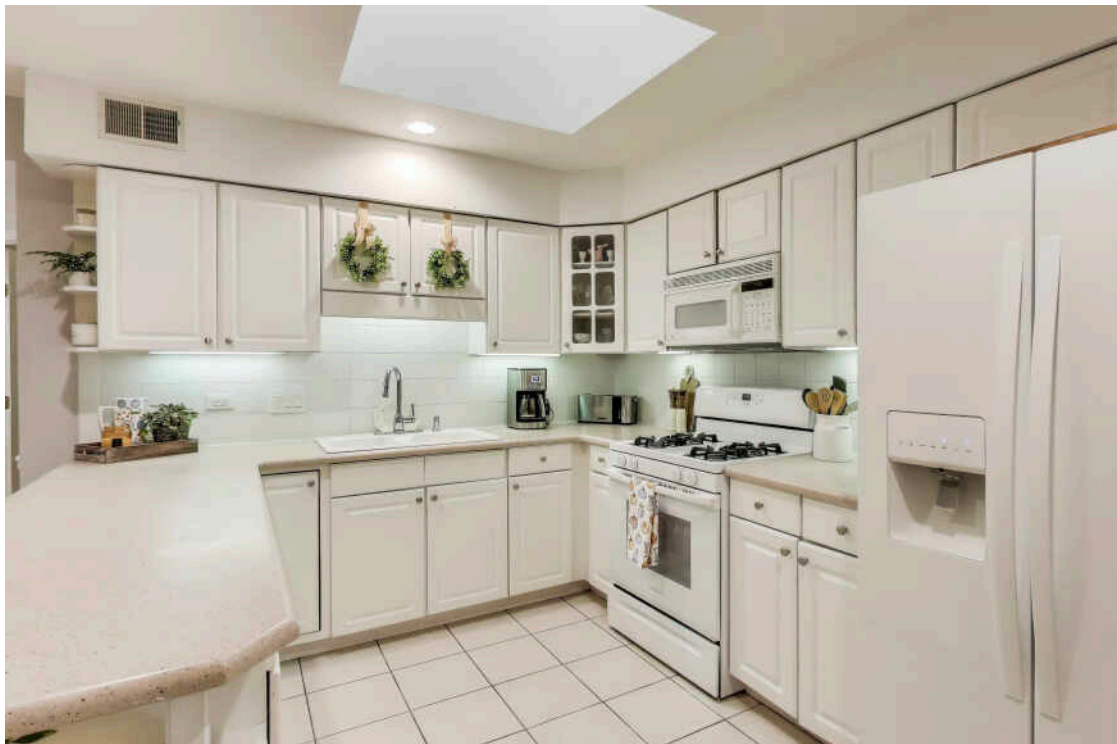


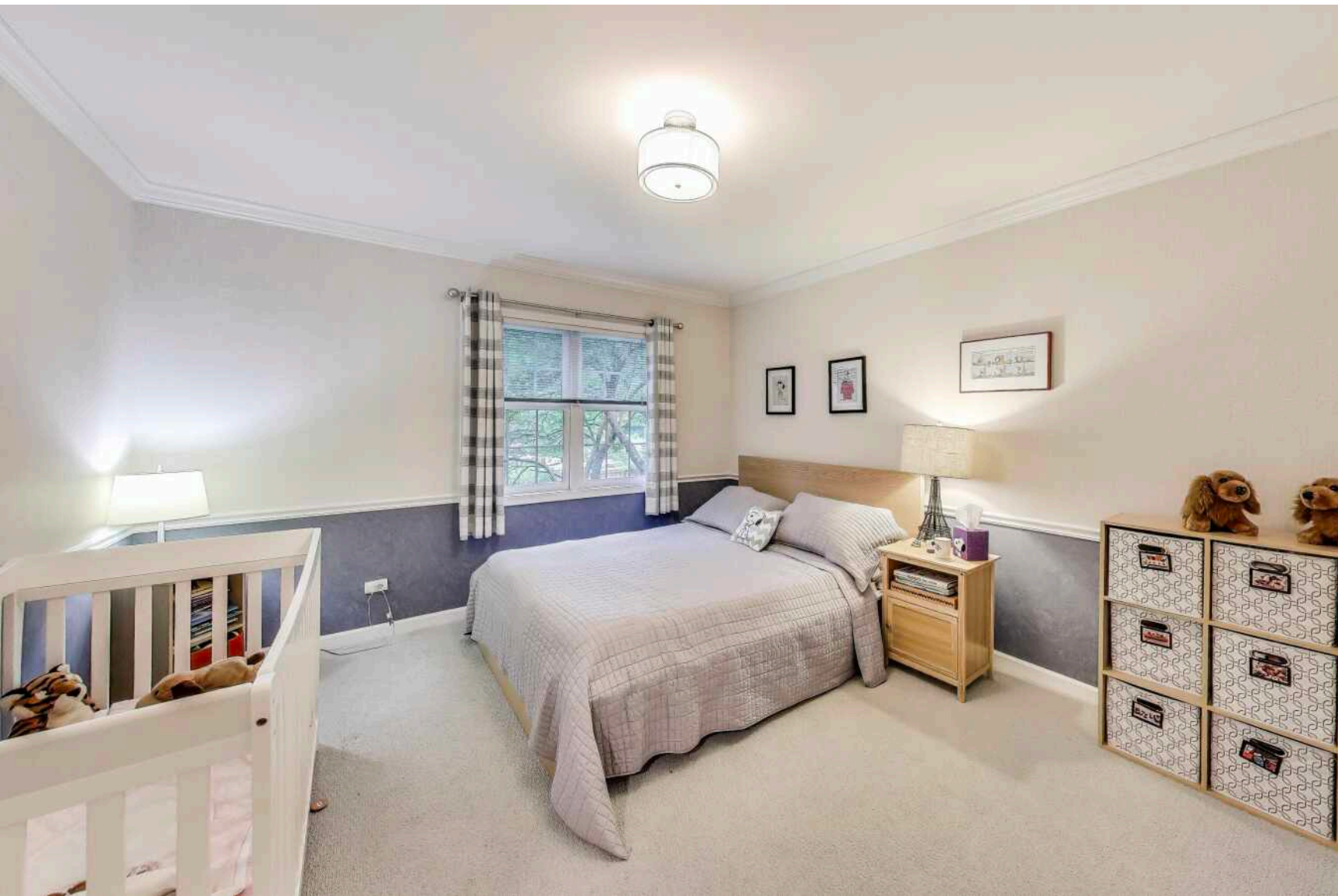


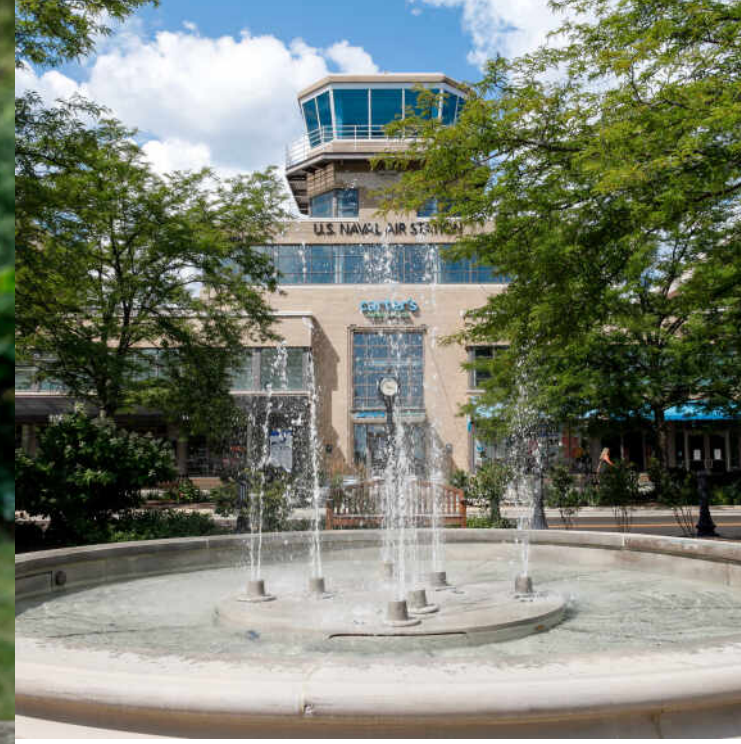
IN THE HEART OF GLENVIEW

Beautifully Maintained End Unit in the Heart of Glenview Rarely available end-unit condo in the highly desirable 1234 Depot Street building-minutes from both downtown Glenview and The Glen. Spacious, open-concept layout, designed for both everyday living and effortless entertaining. The living and dining areas flow seamlessly into a bright, oversized kitchen with white cabinetry, a skylight that floods the space with natural light, and a generous breakfast/eat-in kitchen. The bedroom wing features two large bedrooms, each with walk-in closets. The primary suite offers southern exposure for natural light while positioned at tree-line height, the condo offers a rare blend of privacy and natural scenery-perfect for quiet mornings or evenings overlooking the greenery, with a large primary en-suite bath with a dual vanity and walk-in shower, plus an expansive closet. The second bedroom is equally roomy with its own walk-in. A full hall bath includes a whirlpool tub. Additional conveniences include a full-sized laundry room with built-in storage and folding space, as well as a large south-facing balcony off the living room-perfect for relaxing among the trees or enjoying Jackman Park concerts from home.

2 BEDROOM
2 BATH
TAXES: \$6,301
ASSESSMENTS: \$614 / MONTH







JUST 20 MILES FROM DOWNTOWN CHICAGO, **GLENVIEW** IS A DESTINATION IN ITS OWN RIGHT.

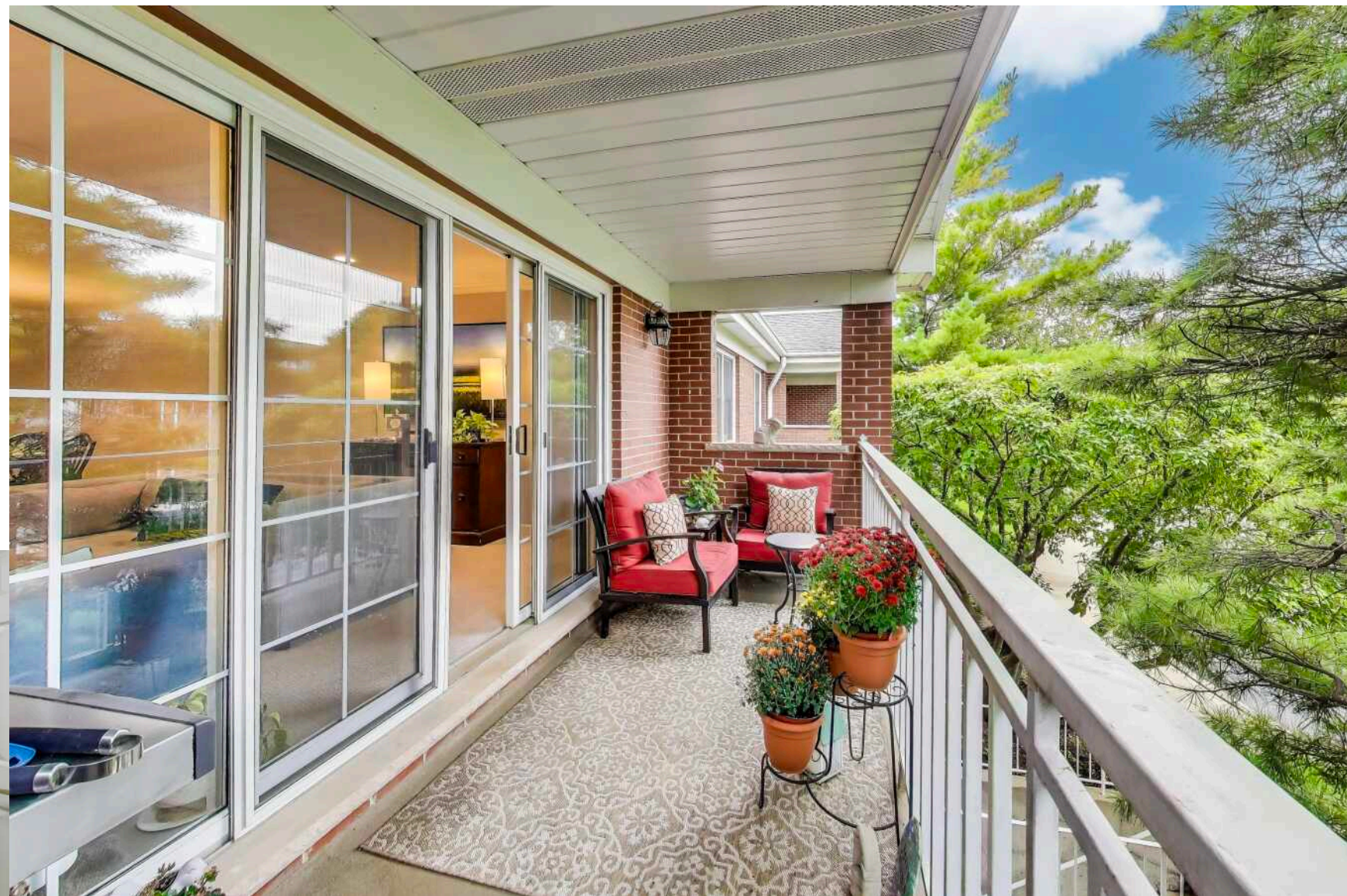
The scenic North Shore town has expanded rapidly thanks to its established neighborhoods, convenient access to transportation, and array of amenities.

More than 45,000 people call Glenview home, with properties ranging from townhomes and condominiums to luxury custom homes featuring the latest amenities. Newer homes can also be found at The Glen, a large development on the site of the former Glenview Naval Air Station that offers an assortment of shops and restaurants, a movie complex, the Kohl Children's Museum, and access to one of the town's two Metra stations.

Glenview is served by a number of public and private schools, including Glenbrook South High School, ranked among the top in the nation according to Business Insider.

The Glenview Park District offers indoor and outdoor pools, golf courses, soccer fields, nature trails, an ice center, tennis club, and multi-purpose community center.

In addition to modern development, Glenview celebrates and preserves its early days with two notable attractions: Wagner Farm and The Grove. A 20-acre working farm, Wagner Farm has hands-on programs - horseback riding, tractor driving, and other activities - that reflect a day in the life of a 1920s farmer. The Grove, a National Historic Landmark, includes a prairie, nature trails, historic buildings, and a log cabin that dates back to the 1850s.





KEKI CANNON

312.860.3390

8478810200

KEKI@ATPROPERTIES.COM

WWW.KEKICANNON.COM

keki
CANNON