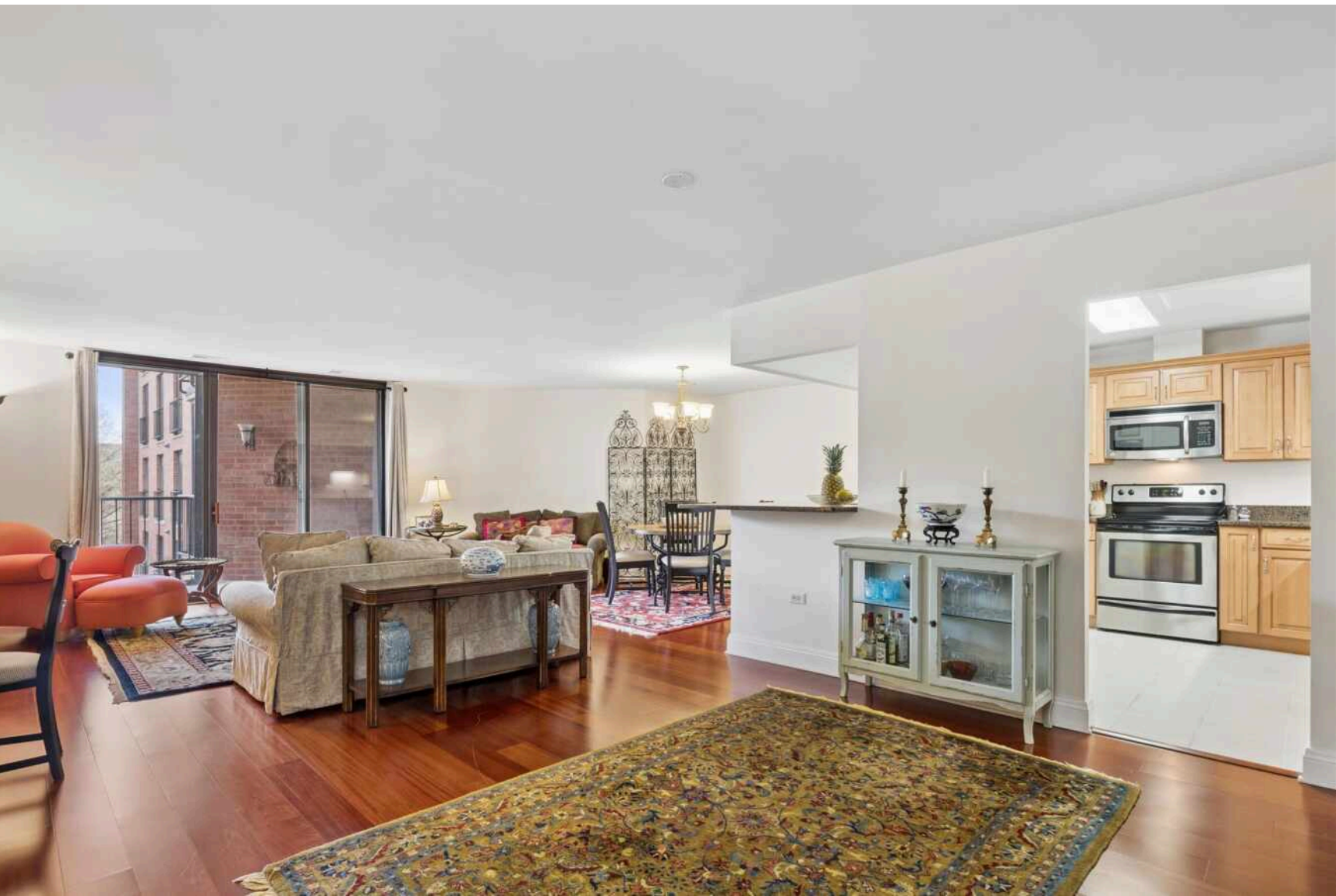


**123 ACACIA CIRCLE #302**  
INDIAN HEAD PARK





#### ROOM DIMENSIONS

LIVING ROOM : 16' × 13'

DINING ROOM : 14' × 12'

SITTING ROOM : 14' × 12'

BALCONY : 18' × 6'

PRIMARY BEDROOM : 20' × 11'

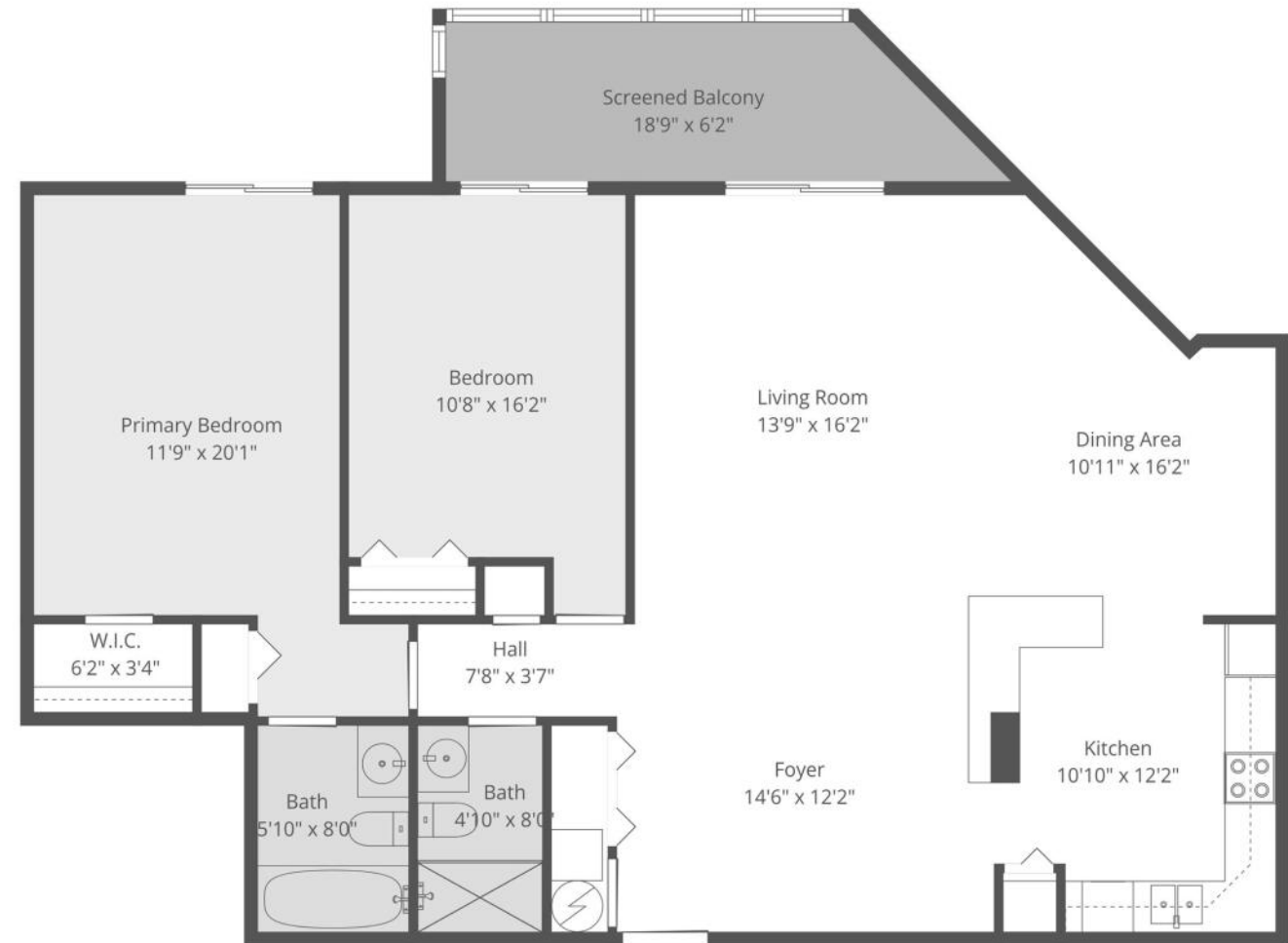
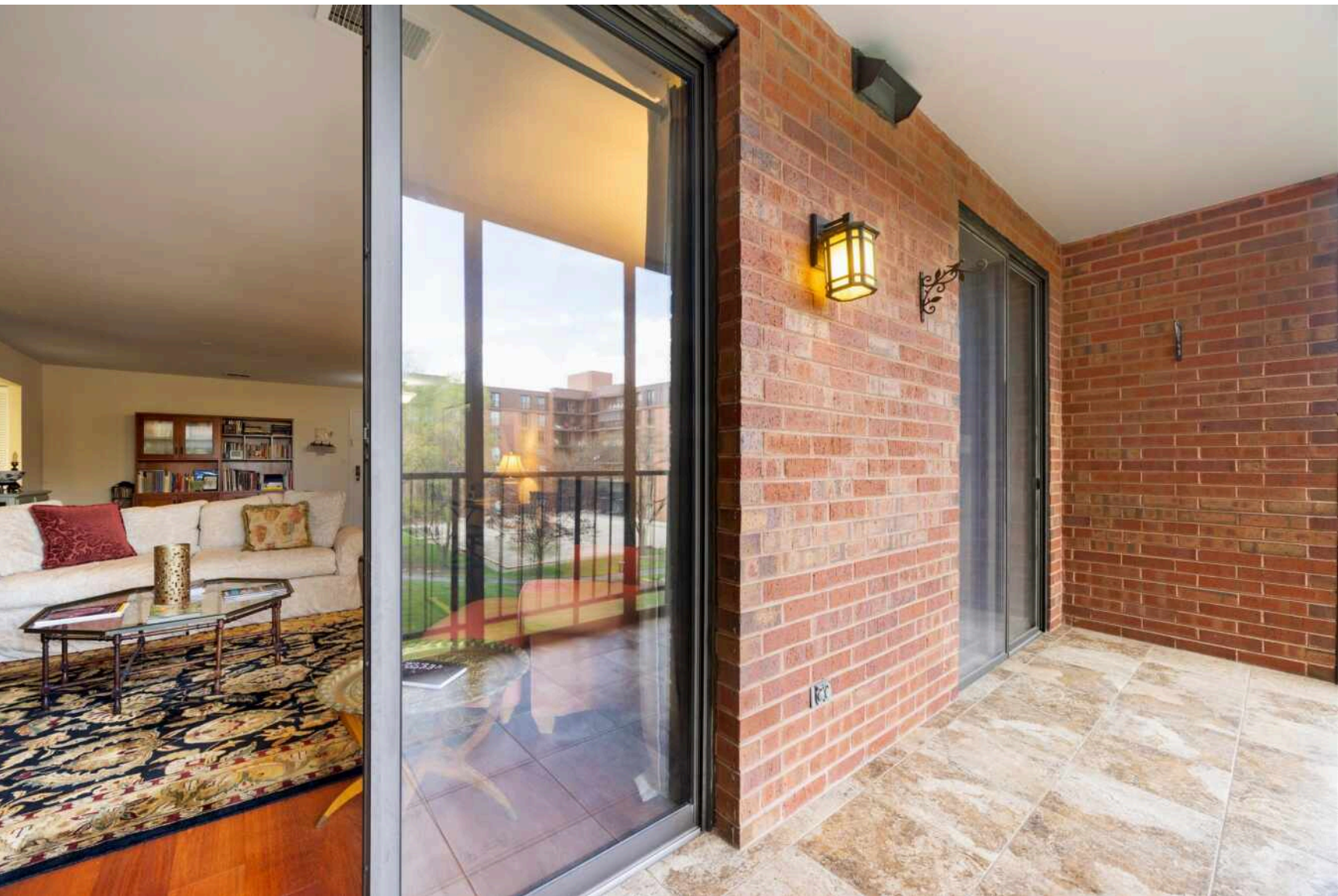
SECOND BEDROOM : 16' × 10'

2 BEDROOM

2 BATH

Enjoy resort-style living in this bright and spacious 2-bed, 2-bath condo in the highly sought-after Wilshire Green community. Positioned to capture prime southern exposure, this third-floor residence is bathed in natural light throughout the day. The thoughtful open-concept layout seamlessly connects the kitchen, living, and dining areas, creating an inviting space perfect for both relaxing and entertaining. Step outside to your private screened patio, a tranquil outdoor retreat accessible from both the main living area and the second bedroom. The primary suite offers a generous walk-in closet and private bath. Additional features include a convenient in-unit stackable washer and dryer, 1-car garage parking, and a dedicated storage unit. Life at Wilshire Green feels like a permanent vacation. Residents enjoy access to a newly renovated clubhouse offering a fitness center, bar, ping pong and pool tables, an indoor lap pool, and an outdoor pool. The community also features two tennis courts, walking trails, a commuter bus to Metra, and ample exterior parking for guests or additional vehicles. Conveniently located near I-294 and I-55 for easy access to Midway and O'Hare. Don't miss the opportunity to enjoy everything this vibrant, well-maintained community has to offer!





**Total: 1248 sq. ft**  
 1st Floor: 1248 sq. ft  
 Excluded Areas: Screened Balcony: 116 sq. Ft, Walls: 90 sq. ft

THE COLLECTIVE

Measurements Are Highly Reliable But For Marketing Only. Produced By The Collective.





**INDIAN HEAD PARK IS A QUIET AND AFFLUENT VILLAGE WITH A LOVE FOR NATURE AND COMMUNITY.**

Characterized by its rolling terrain, mature trees, and park-like setting, the village is committed to forestry and the preservation of trees. It has been a member of Tree City USA, an organization that has been committed to greening up cities and towns across America, for over 20 years.

Residents can often find deer freely roaming about the community or a new tree being planted. Indian Head Park's business district is located along the Wolf & Joliet Road intersection corridor, with both retail and commercial offerings.

The village also has excellent parks and local recreation such as the nearby Flagg Creek Golf Course in Countryside.

Residents have convenient transportation to downtown Chicago and O'Hare and Midway International Airports.





## HOLLY CAROLLO

(708) 334-1841

HOLLYCAROLLO@ATPROPERTIES.COM