

1241 WOODSIDE ROAD
LA GRANGE PARK





ROOM DIMENSIONS

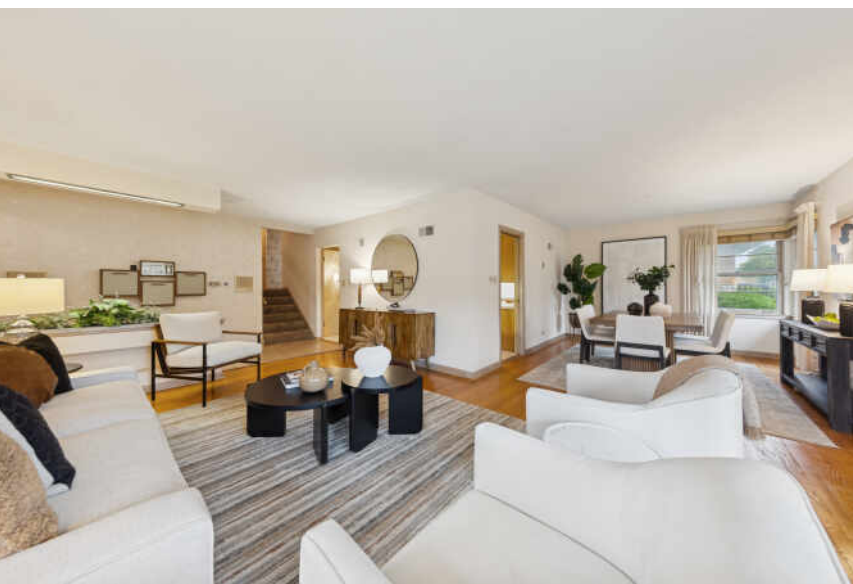
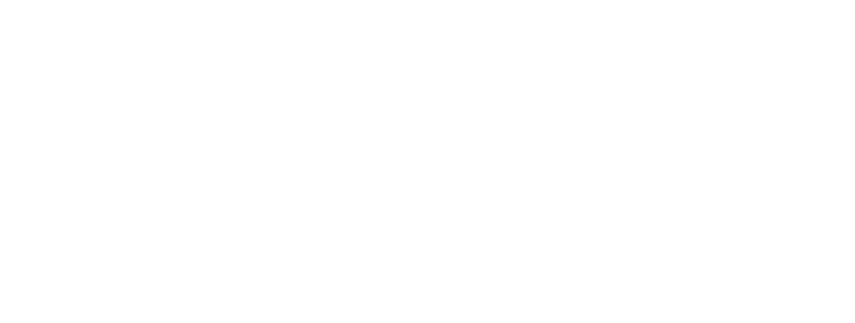
LIVING ROOM : 14' x 20'
FAMILY ROOM : 25' x 22'
DINING ROOM : 13' x 10'
KITCHEN : 15' x 13'
PRIMARY BEDROOM : 15' x 11'
SECOND BEDROOM : 15' x 11'
THIRD BEDROOM : 13' x 12'

First time on the market! Continue the legacy of this family-owned home for 2 generations! Solidly built and meticulously maintained home with generous room sizes! As you enter from the front porch this mid-century modern home has a large living room with hardwood floors and adjacent dining room. A bright eat-in kitchen with an abundance of cabinets and counter space make for a wonderful space to cook and entertain. 3 good size bedrooms with great closet space & hardwood floors under the carpet along with a full bathroom with oversized vanity & walk-in shower are on the 2nd level. The finished lower level features a large family room with a fireplace a full bathroom plus laundry and storage area along with a full wet bar area. The walkout basement takes you to a large heated breezeway to the attached 2 car heated garage and access to outdoor space. The back yard is fully fenced with a patio, raised garden bed and lovely landscaping. Other features include a newer roof, Furnace & AC and much more! Set on a 50x139 corner lot & located close to schools, parks and easy access to expressways & downtown LG & La Grange Park! Welcome home!

- Brick tri-level home
- Hardwood floors
- Vintage Stereo System and Intercom Speakers throughout (As-Is)
- Spacious eat-in kitchen
- Fireplace in Family Room
- Wet bar in walkout basement
- Large heated breezeway or mudroom or workroom
- La Grange school district and Lyons Township HS

3 BEDROOM
2 BATH
TAXES: \$9,544









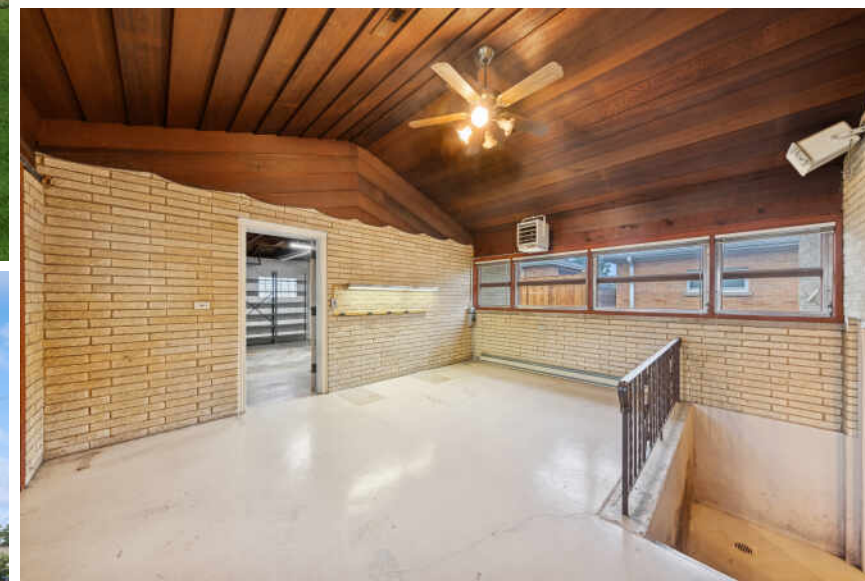
THE VILLAGE OF **LA GRANGE PARK** CHARMS RESIDENTS WITH ITS TREE-LINED STREETS AND NATURAL BEAUTY.

Located 16 miles west of The Loop, the community is a popular retreat for commuters working in the city. With over 24 acres of parkland, the Cook County forest preserves, and the Salt Creek Bike Trail, La Grange Park gives residents ample opportunity for recreational activities.

Throughout the year, neighbors are treated to local community events such as the annual Music Under the Stars series and National Night Out. Weekend block parties and the local swimming pool also bring residents together in the summer.

La Grange Park is largely characterized by its historic homes, but the village also offers an array of condominiums and single-family homes.

Residents have easy access to I-290, I-294, and I-55 as well as nearby train stations along Metra's BNSF Railway.

[illegible]



SHEILA O'MALLEY

312.330.0027

SOMALLEY@ATPROPERTIES.COM

WWW.SOMALLEYTEAM.COM



All specifications, features, designs, price, assessments, taxes and materials are subject to change without notice. Depicted floor plans and architectural renderings are only an artist's impression.

