

124 NORTHBROOK DRIVE
MICHIGAN CITY





ROOM DIMENSIONS

LIVING ROOM : 18.1' × 13.9'

FAMILY ROOM : 14.0' × 9.11'

DINING ROOM : 7.7' × 11.8'

KITCHEN : 12.4' × 13.7'

PRIMARY BEDROOM : 11.4' × 11.5'

SECOND BEDROOM : 10.9' × 11.1'

THIRD BEDROOM : 9.3' × 10.2'

LAUNDRY ROOM : 5.5' × 9.11'

SCREENED PORCH : 23.3' × 11.5'

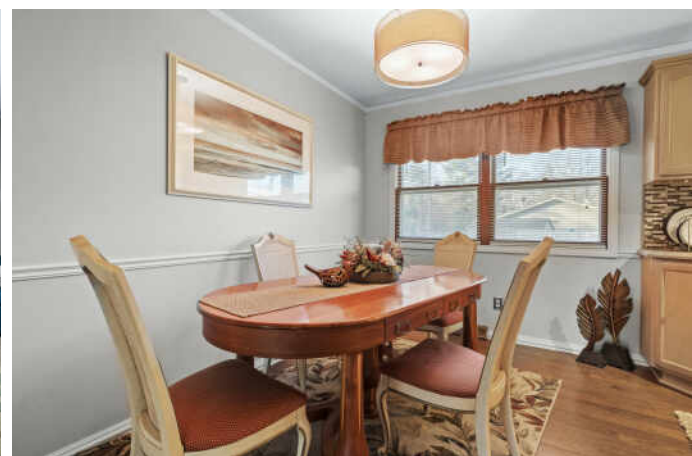
3 BEDROOM

1.5 BATH

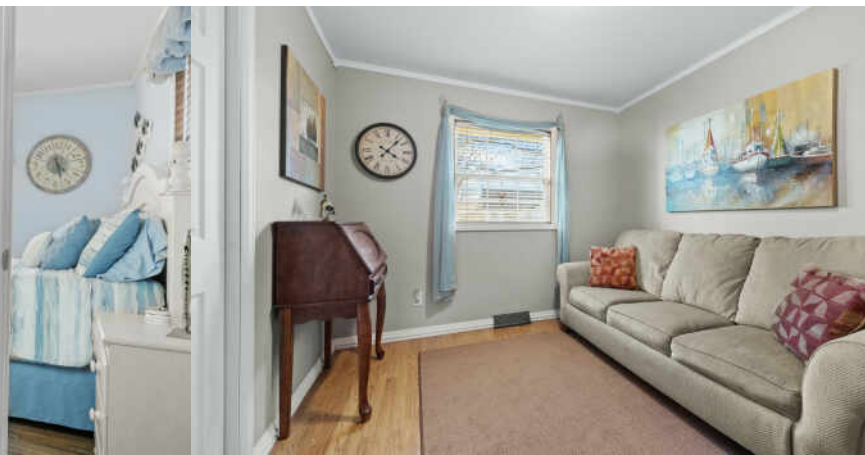
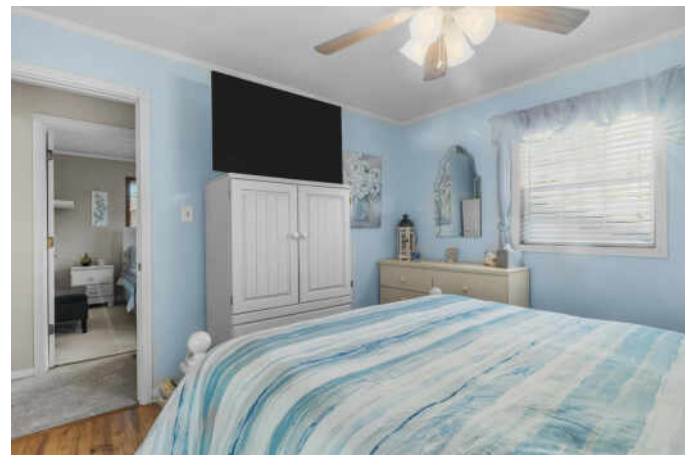
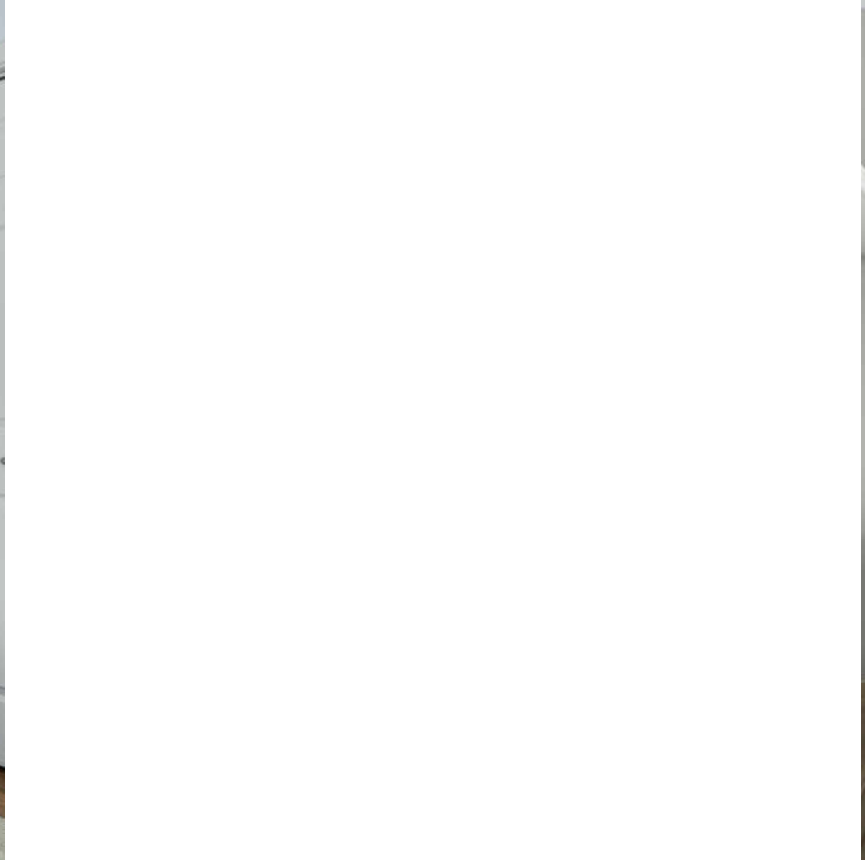
LOOKING FOR A COZY YET SPACIOUS RETREAT THAT PERFECTLY BALANCES RELAXATION AND CONVENIENCE? LOOK NO FURTHER THAN THIS CHARMING 3-BEDROOM, 1.5-BATHROOM RANCH HOME, NESTLED ON A DOUBLE LOT IN THE COVETED SHORELAND HILLS COMMUNITY.

Whether you're sipping your morning coffee on the covered front porch or enjoying a summer night cookout after a day spent at the beach in your backyard, this home offers something for everyone. From the moment you step inside, you'll be greeted by a sense of warmth and comfort. This lovingly maintained home features all main-level living, so you can enjoy your space without the hassle of stairs, ideal for someone looking to right size their lifestyle.

- Living Room overlooks the neighborhood and flows into the Dining Area and Kitchen that features tile backsplash and a breakfast bar into the Family Room. Just off of the additional Living Space sits a main-level Laundry Room.
- Primary Bedroom with an en-suite 1/2 Bath with access into the shared Full Bathroom. 2 Additional Bedrooms complete the layout with a spacious Screened Porch situated off of the additional Living Space with breathtaking views of the fully fenced in backyard and large back deck area, the best spot to entertain both your pets and guests.
- Storage shed provides all the space you need to keep your lawn maintenance tools organized.
- 2 Car attached garage with additional driveway parking.
- Come fall in love with this Shoreland Hills gem. With low maintenance living, a yard that's perfect for entertaining, and a short walk to the vibrant Lake Michigan beaches at Stop 31, this home is waiting for the next loving owners!









TOTAL: 1263 sq. ft
FLOOR 1: 1263 sq. ft
EXCLUDED AREAS: GARAGE: 393 sq. ft, SCREENED PORCH: 266 sq. ft, DECK: 197 sq. ft

Floor Plan Created By Cubicasa App. Measurements Deemed Highly Reliable But Not Guaranteed.



WITH PRISTINE BEACHES AND CLOSE PROXIMITY TO BOTH THE **INDIANA DUNES** AND THE SOUTH SHORE OF LAKE MICHIGAN, MICHIGAN CITY HAS IT ALL.

Home to the Old Michigan City Light, the community boasts one of the last remaining and oldest lighthouses in Indiana. Today, the Michigan City Historical Society operates the Old Lighthouse Museum for visitors to explore the historical landmark.

Residents take advantage of the many parks and beaches, as well as three golf courses. Washington Park is a local favorite, offering a beach, fishing, bird watching, hiking, picnic areas, sand volleyball, and ice skating in the winter. The nearby Washington Park Zoo is home to tigers, wolves, alligators, and grizzly bears. Michigan City's Blue Chip Casino Hotel Spa is a local getaway with a casino, dining options, and a spa. For shopping enthusiasts, the Lighthouse Place Premium Outlets features more than 100 factory stores in a park-like, village setting.

Michigan City real estate opportunities encompass beachfront cottages, grand vacation homes, and custom homes in gated resort communities.

The Michigan City Transit runs a local bus route, and both Amtrak and the South Shore Line offer daily service from Michigan City to Chicago.



NOTES _____



MICKY GALLAS

1 2198616012

1 2198747070

MICKYGALLAS@ATPROPERTIES.COM



BRAEDAN GALLAS

1 2192291951

2198747070

BRAEDANGALLAS@ATPROPERTIES.COM



CHRISTIE'S
INTERNATIONAL REAL ESTATE