

124 W POLK STREET #307
SOUTH LOOP





ROOM DIMENSIONS

LIVING ROOM : 22' x 22'

KITCHEN : 12' x 11'

PRIMARY BEDROOM : 16' x 10'

SECOND BEDROOM : 19' x 9'



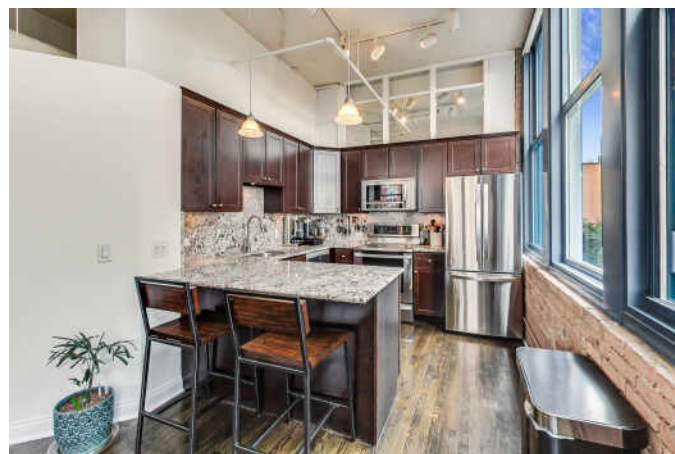
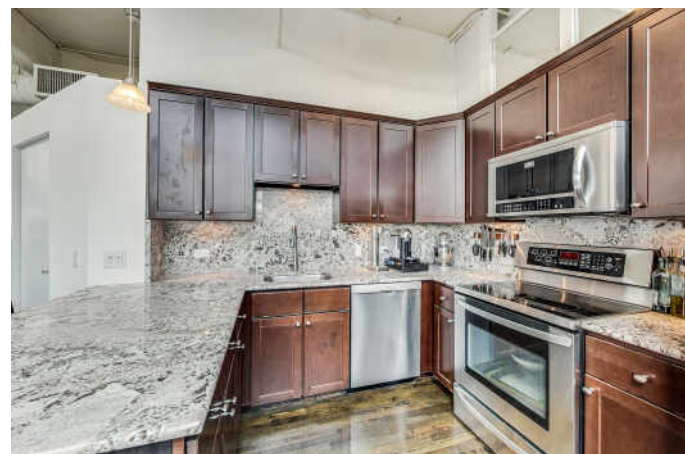
2 BEDROOM

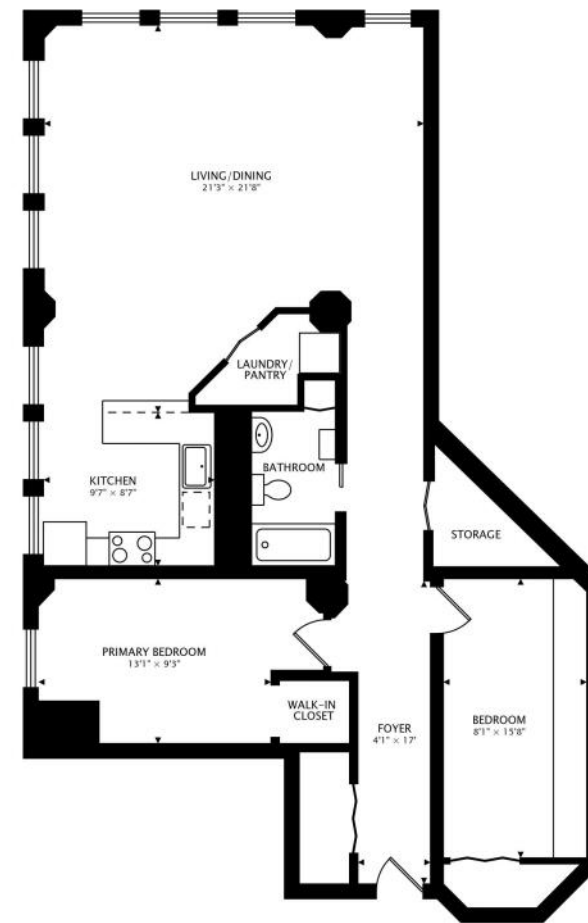
1 BATH

TAXES: \$4,239

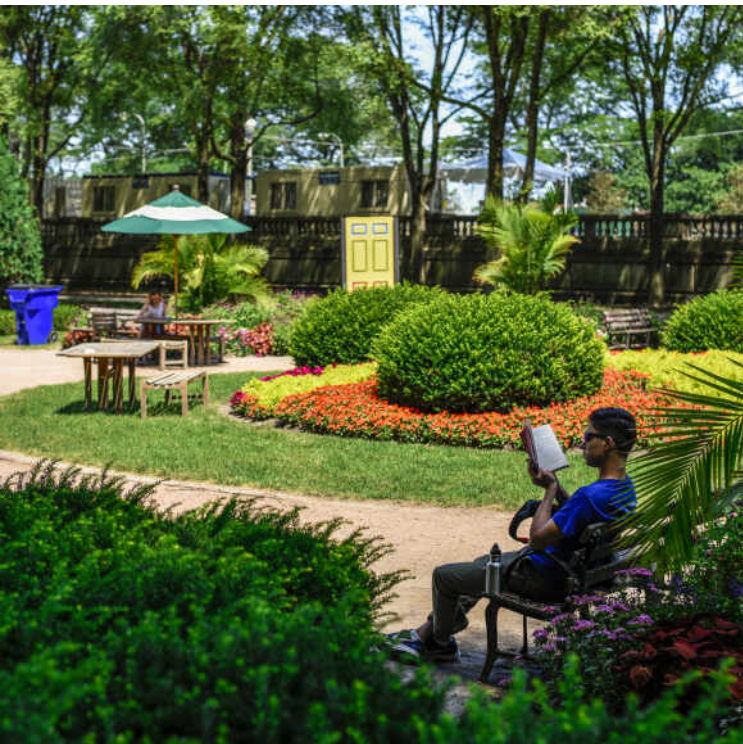
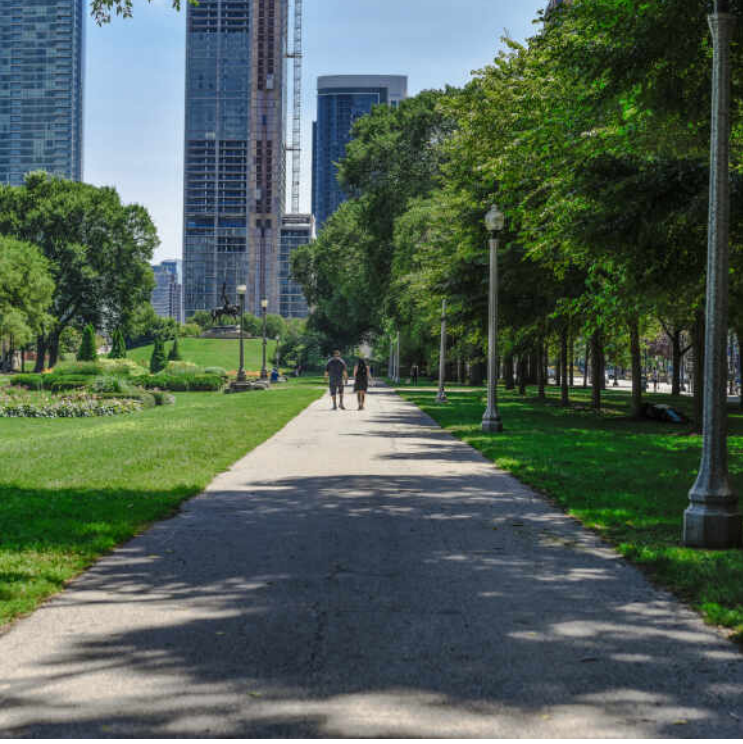
ASSESSMENTS: \$481

Oversized windows create a sundrenched palette that highlight exposed brick and high ceilings. Ebony-stained floors are throughout this 1,200+ square foot corner unit, leading you to a spacious kitchen with newer SS appliances and plenty of cabinet storage. Off the kitchen is convenient in unit laundry and pantry shelving. A bright and open living room/dining room combination make this space ideal for entertaining or cozy nights in. Off the main hallway you will find the primary bedroom, with upgraded closet organization. A shared full bathroom is updated with a refinished bathtub. Additional bedroom has a murphy bed and desk built in, accenting the room. To complete, this building has a rooftop deck and gym facilities. Located within a close walk to museums, Millennium Park, Grant Park, Chicago's finest theaters, Roosevelt Collection shopping/restaurants, public trans. and more! Updates: Bathtub Refinish - 2022 All Walls, Doors, and Trim Painted - 2022 New LG French Door Refrigerator with Ice Maker - 2020 New Kohler Faucet with built-in sprayer in Kitchen Sink - 2020 New Roller Shades installed on all windows - 2019 New Heat Pump Chassis and Blower Motor Replacement - 2018 Murphy Bed and Built Ins with Desk installed in 2nd Bedroom - 2017 Elfa system installed in 2nd Bedroom - 2015 Primary closet updated to a walk-in with Elfa System and bedroom doors installed - 2014





1220 sq ft



CHARACTERIZED BY TOWERING HIGH
RISES AND HISTORIC POCKETS THAT
REFLECT THE AREA'S STORIED PAST, THE
SOUTH LOOP IS A DISTINCTIVE CHICAGO
NEIGHBORHOOD.

Chicago's original Gold Coast in the late 19th century, the South Loop was once home to the likes of Marshall Field, George Pullman, and Philip Armour. Today the vibrant neighborhood is known for its access to the lakefront, shops, restaurants, parks, Museum Campus, and The Loop.

The South Loop is comprised of several historic areas including Printer's Row, which features a number of buildings that have been converted into residential lofts, along with Motor Row District and Prairie Avenue District. Meanwhile, several apartment and condominium buildings are under construction, bringing thousands of new residences to the neighborhood.

The South Loop's housing boom has brought with it an influx of retailers along with eateries and nightlife on South Michigan Avenue. The Roosevelt Collection is a popular destination featuring a movie theater and an assortment of retailers.

Museum Campus is the cultural hub of the South Loop featuring attractions including the Field Museum, Shedd Aquarium, Adler Planetarium, and Soldier Field. Residents also enjoy being in close proximity to Northerly Island and public transportation including the CTA's Roosevelt station.



NOTES _____



MEGAN CAMPBELL BARNITZ

(773) 544-9471

MEGANBARNITZ@ATPROPERTIES.COM



ANDREW DALEY

(773) 701-3218

847-797-0200

ANDREWDALEY@ATPROPERTIES.COM



CHRISTIE'S
INTERNATIONAL REAL ESTATE