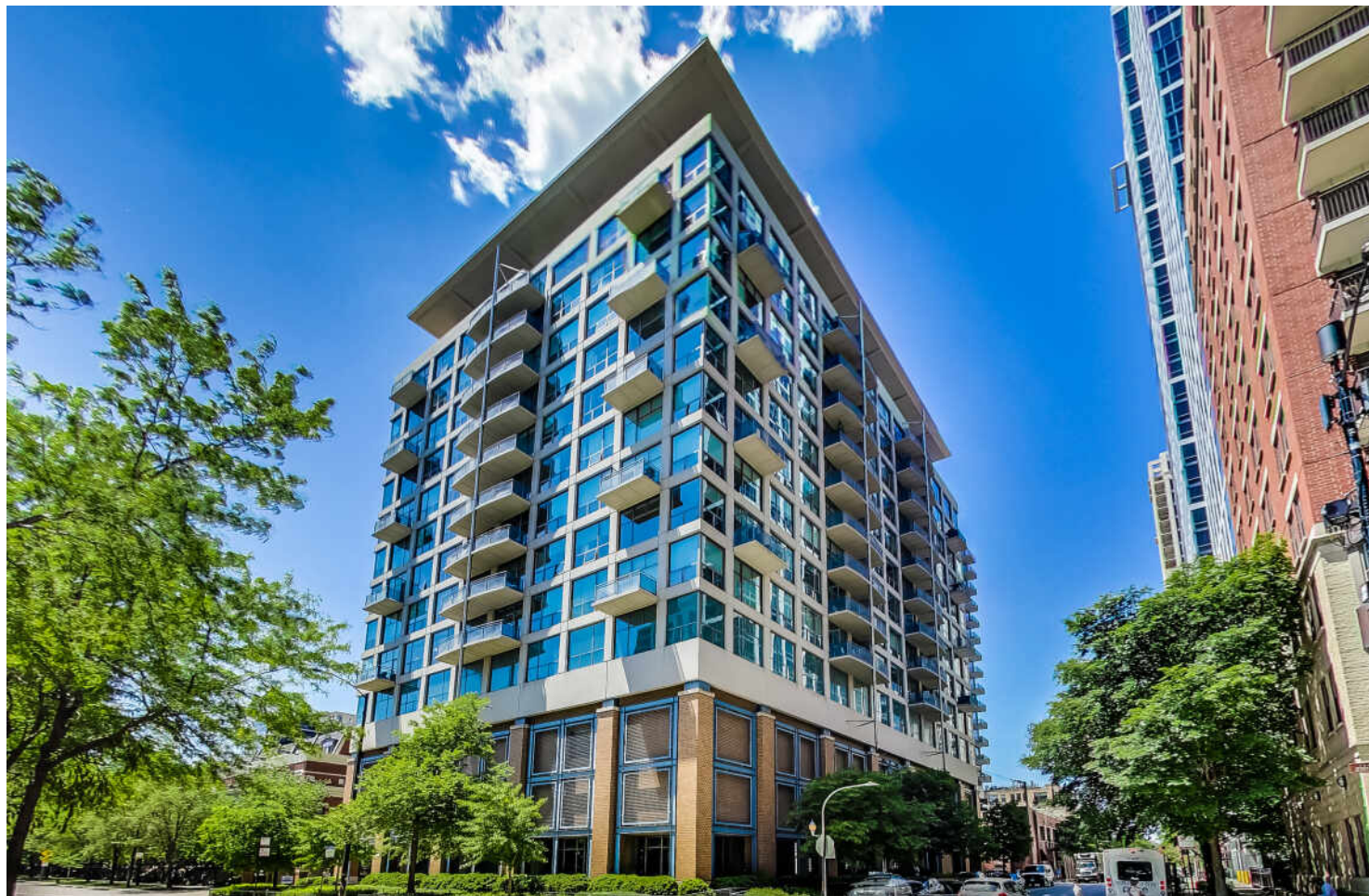


125 E 13TH STREET #710
NEAR SOUTH SIDE





ROOM DIMENSIONS

LIVING ROOM : 22' × 14'

KITCHEN : 12' × 11'

PRIMARY BEDROOM : 14' × 11'

SECOND BEDROOM : 11' × 10'

125 E. 13TH STREET, UNIT #710

2 bedroom + den 2 bathroom loft-style condo in the Museum Park Lofts priced to sell! This unit features a South view, tall ceilings, hardwood floors, eat-in kitchen with an island, stainless steel appliances, newer Quartz countertops, white cabinets and newer subway tile backsplash, living room with a gas fireplace, newer carpeting (3 years old), and a newer in-unit washer and dryer. The primary bedroom includes a full bathroom with separate shower and double vanity, The den/bonus room is perfect for an in-home office. The amenities in the building include a bike room, workout facility, storage unit, and package room! You have access to membership to the Museum Park clubhouse and pool for an additional annual fee. Much more to see! Close to Grant Park, Millennium Park, Soldier Field, Daniel Webster Park, Shedd Aquarium, expressways, and more! No special assessments! Additional \$30k for deeded parking space. Hurry won't last long!

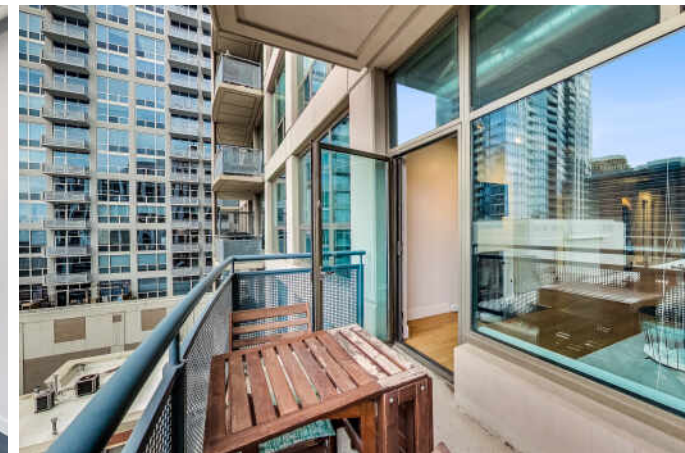
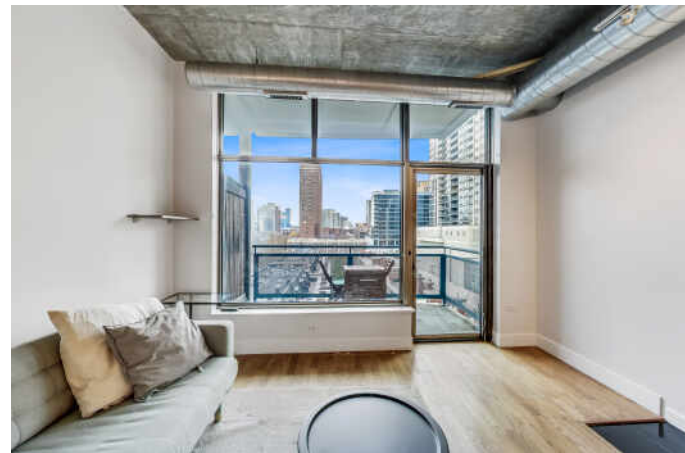


2 BEDROOM

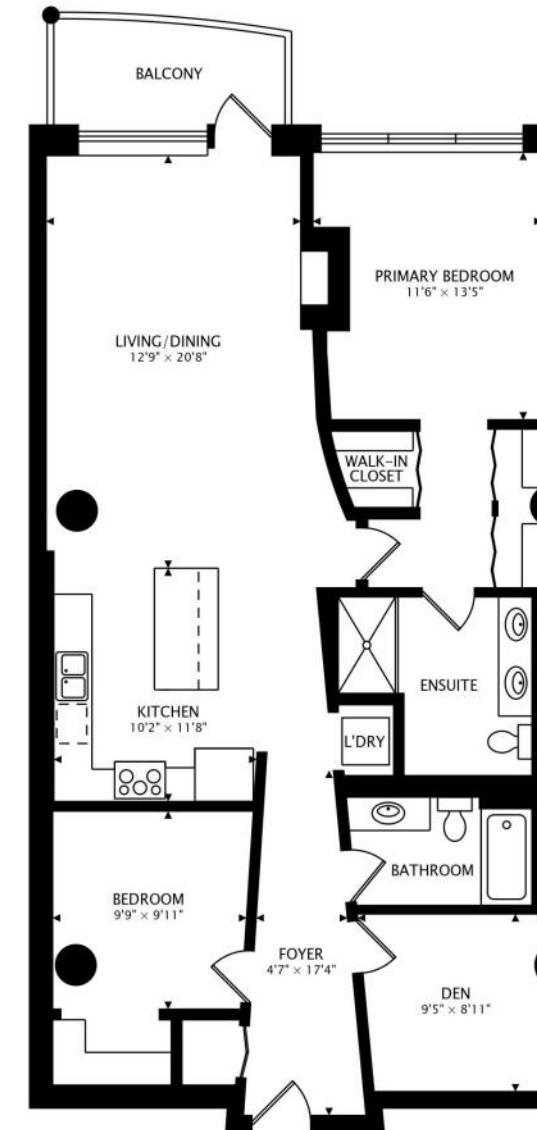
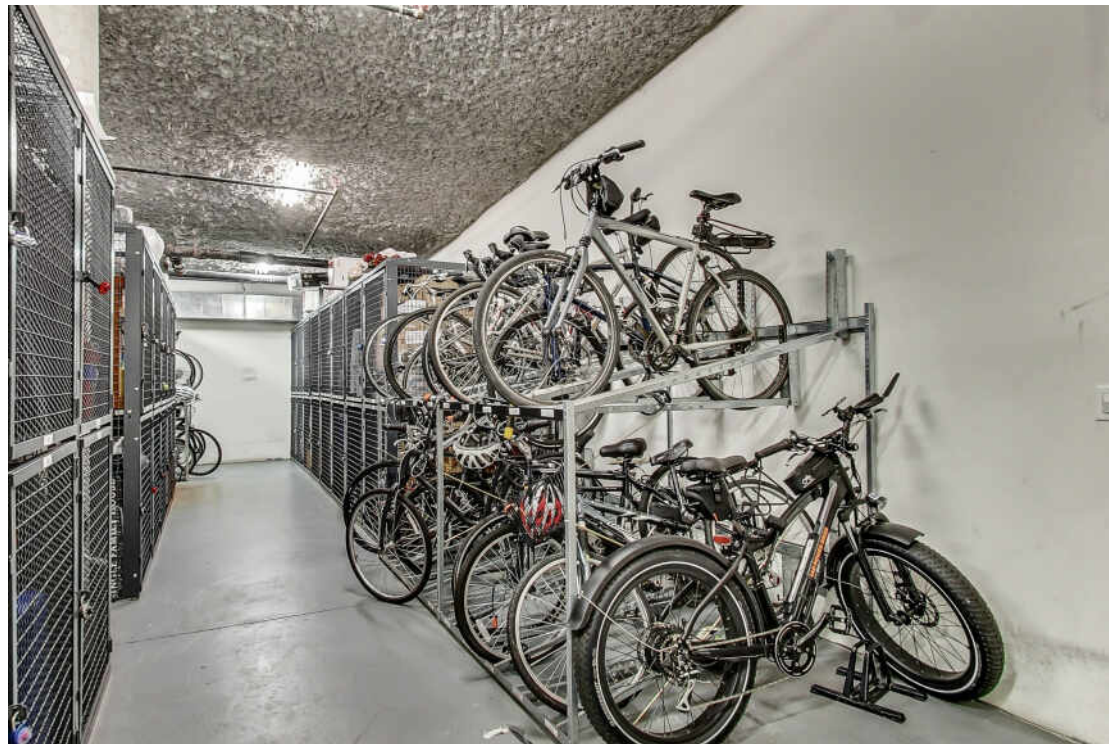
2 BATH

TAXES: \$7,697

ASSESSMENTS: \$494 / MONTH







1276 sq ft + 58 sq ft BALCONY



NOTES _____



VERGIS H. EILAND III

(312) 802-6204

VERGIS@VERGISEILAND.COM

WWW.VERGISEILAND.COM



VERGIS EILAND

Anticipating your Needs. Total Satisfaction Guaranteed.



CHRISTIE'S
INTERNATIONAL REAL ESTATE